

Product datasheet for **RC223879**

Ghrelin Receptor (GHSR) (NM_004122) Human Tagged ORF Clone

Product data:

Product Type:	Expression Plasmids
Product Name:	Ghrelin Receptor (GHSR) (NM_004122) Human Tagged ORF Clone
Tag:	Myc-DDK
Symbol:	Ghrelin Receptor
Synonyms:	GHDP
Mammalian Cell Selection:	Neomycin
Vector:	pCMV6-Entry (PS100001)
E. coli Selection:	Kanamycin (25 ug/mL)
ORF Nucleotide Sequence:	>RC223879 ORF sequence Red=Cloning site Blue=ORF Green=Tags(s)

TTTTGTAATACGACTCACTATAGGGCGGCCGGAATTCGTCGACTGGATCCGGTACCGAGGAGATCTGCC
GCC**CGCATCGCC**

ATGTGGAACGCGACGCCAGCGAAGAGCCGGGTTCAACCTCACACTGGCCGACCTGGACTGGGATGCTT
CCCCGGCAACGACTCGCTGGGCGACGAGCTGCTGCAGCTCTCCCCGCGCCGCTGCTGGCGGGCGTCAC
AGCCACCTGCGTGGCACTCTTCGTGGTGGGATCGCTGGCAACCTGCTCACCATGCTGGTGGTGTCCGCG
TTCCGCGAGCTGCGCACCACCAACCTCTACCTGTCCAGCATGGCCTTCTCCGATCTGCTCATCTTCC
TCTGCATGCCCTGGACCTCGTTCGCCTCTGGCAGTACCGGCCCTGGAACCTCGGCGACCTCTCTGCAA
ACTCTTCCAATTCGTAGTGAGAGCTGCACCTACGCCACGGTGTCCACATCACAGCGCTGAGCGTGGAG
CGCTACTTCGCCATCTGCTTCCCACTCCGGGCCAAGGTGGTGGTACCAAGGGGCGAGTGAAGCTGGTCA
TCTTCGTATCTGGGCCGTGGCCTTCTGCAGCGCCGGGCCATCTTCGTGCTAGTCGGGGTGGAGCACGA
GAACGGCACCCGACCTTGGGACCAACGAGTGCCGCCCCACCGAGTTTGCGGTGCCTCTGGACTGCTC
ACGGTCATGGTGTGGGTGCCAGCATCTTCTTCTTCTTCTTCTGCTTCTGCTCACGGTCTCTACAGTC
TCATCGGCAGGAAGCTGTGGCGGAGGAGCGCGGCATGCTGTCGTGGTGCCTCGCTCAGGACCCAGAA
CCACAAGCAAACCGTGAAAATGCTGGTGGTCTCAGCGCGCCTCAGGCTTTCTCTCGCGGGTCTATC
CTCTCCCTGTGCCTTCTCCCTTCTCTC

ACGCGTACGCGGCCGCTCGAGCAGAAACTCATCTCAGAAGAGGATCTGGCAGCAAATGATATCTGGATT
ACAAGGATGACGACGATAAGGTTTAA



[View online »](#)

Protein Sequence: >RC223879 protein sequence
Red=Cloning site Green=Tags(s)

MWNATPSEEPGFNLTADLDWDASPGNDSLGDPELLQFPAPLLAGVTATCVALFVVGIAGNLLTMLVVS
 FRELRRTTNLYLSSMAFSDLLIFLCMPLDLVRLWQYRPWNFGDLLCKLFQFVSECTYATVLTITALSVE
 RYFAICFPLRAKVVVTKGRVKLVIFVIWAVAFCSAGPIFVLVGVHEHNGTDPWDTNECRPTEFAVRGGLL
 TVMVVSSIFFFLPVFCLTVLYSLIGRKLWRRRRGDVAVGASLRDQNHKQTVKMLGGSQRALRLSLAGPI
 LSLCCLLPSL

TRTRPLEQKLISEEDLAANDILDYKDDDDKV

Chromatograms: https://cdn.origene.com/chromatograms/mk6474_g08.zip

Restriction Sites: SgfI-MluI

Cloning Scheme:



ACCN: NM_004122

ORF Size: 867 bp

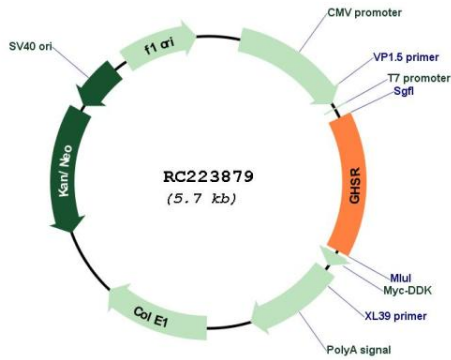
OTI Disclaimer: The molecular sequence of this clone aligns with the gene accession number as a point of reference only. However, individual transcript sequences of the same gene can differ through naturally occurring variations (e.g. polymorphisms), each with its own valid existence. This clone is substantially in agreement with the reference, but a complete review of all prevailing variants is recommended prior to use. [More info](#)

OTI Annotation: This clone was engineered to express the complete ORF with an expression tag. Expression varies depending on the nature of the gene.

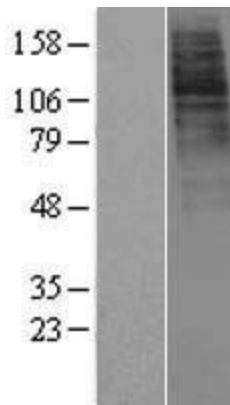
Components: The ORF clone is ion-exchange column purified and shipped in a 2D barcoded Matrix tube containing 10ug of transfection-ready, dried plasmid DNA (reconstitute with 100 ul of water).

Reconstitution Method:	<ol style="list-style-type: none">1. Centrifuge at 5,000xg for 5min.2. Carefully open the tube and add 100ul of sterile water to dissolve the DNA.3. Close the tube and incubate for 10 minutes at room temperature.4. Briefly vortex the tube and then do a quick spin (less than 5000xg) to concentrate the liquid at the bottom.5. Store the suspended plasmid at -20°C. The DNA is stable for at least one year from date of shipping when stored at -20°C.
RefSeq:	NM_004122.2
RefSeq Size:	914 bp
RefSeq ORF:	870 bp
Locus ID:	2693
UniProt ID:	Q92847
Cytogenetics:	3q26.31
Protein Families:	Druggable Genome, GPCR, Transmembrane
Protein Pathways:	Neuroactive ligand-receptor interaction
MW:	32.2 kDa
Gene Summary:	<p>This gene encodes a member of the G-protein coupled receptor family. The encoded protein may play a role in energy homeostasis and regulation of body weight. Two identified transcript variants are expressed in several tissues and are evolutionary conserved in fish and swine. One transcript, 1a, excises an intron and encodes the functional protein; this protein is the receptor for the Ghrelin ligand and defines a neuroendocrine pathway for growth hormone release. The second transcript (1b) retains the intron and does not function as a receptor for Ghrelin; however, it may function to attenuate activity of isoform 1a. Mutations in this gene are associated with autosomal idiopathic short stature.[provided by RefSeq, Apr 2010]</p>

Product images:



Circular map for RC223879



Western blot validation of overexpression lysate (Cat# [LY418197]) using anti-DDK antibody (Cat# [TA50011-100]). Left: Cell lysates from untransfected HEK293T cells; Right: Cell lysates from HEK293T cells transfected with RC223879 using transfection reagent MegaTran 2.0 (Cat# [TT210002]).