

Product datasheet for **RC223876**

ZFP28 (NM_020828) Human Tagged ORF Clone

Product data:

Product Type:	Expression Plasmids
Product Name:	ZFP28 (NM_020828) Human Tagged ORF Clone
Tag:	Myc-DDK
Symbol:	ZFP28
Synonyms:	mkr5
Mammalian Cell Selection:	Neomycin
Vector:	pCMV6-Entry (PS100001)
E. coli Selection:	Kanamycin (25 ug/mL)



[View online »](#)

**ORF Nucleotide
Sequence:**

>RC223876 ORF sequence
 Red=Cloning site Blue=ORF Green=Tags(s)

TTTTGTAATACGACTCACTATAGGGCGGCCGGGAATTCGTCGACTGGATCCGGTACCGAGGAGATCTGCC
 GCC**CGCATCGCC**

ATGCGGGGGCGCGAGCGAGTGTCCGCGAGCCGACGCGCTCCCGGGTAGAGGCGCCCCCGCACAA
 AGCCCCGGGCGGCCGAGGCCGACTGTAGGGACTCCAGCCACCTTGGTCTCCCTGGCCGGGAAGGCC
 GCGCTCAAGGAATGCGCTCGCATCCAAAGGCCAGCGAGGAGCGGCCCTACGGGGCTGGGCACAGACT
 CTGCTTCCAGGGACACTGCTCTCCCCAGGAGAGAAACAAGAAGCTGGAGGCTGTGGGACAGGAATTG
 AACCTAAAGCCATGTCCAGGGCTTGGTACATTTGGGGATGTGGCTGTAGATTTCTCCAAGAGGAGTG
 GGAGTGGCTGAACCCATTACAGAGAACTGTACAGGAAGGTGATGTTGGAGAATACAGGAACCTGGCA
 TCGCTGGGACTTTGTGTTCTAAGCCCGATGTGATCTCCTCGTTGGAACAAGGAAAAGAGCCTTGGACAG
 TGAAGCGAAAGATGACAAGAGCCTGGTGCCAGACTTGAAGGCTGTGTGGAAGATCAAGGAGTTACCTCT
 CAAGAAGGACTTCTGCGAAGGAAAGCTATCCCAGGCAGTGATAACAGAGAGACTCACAAAGCTATAATCTG
 GAGTACTCTGTAGGGGAACACTGGGATTATGATGCTCTGTTGAGACACAGCCGGGCTTGGTACTA
 TCAAAAACCTGGCTGTTGACTTCCGCCAGCAGCTACACCCAGCTCAGAAGATTTCTGTAAGAATGGGAT
 ATGGGAGAAACAACAGTGACCTGGGATCAGCAGGACATTGTGTGGCTAAGCCAGATTTAGTCTTTACTA
 GAGCAAGAGAAGGAGCCCTGGATGGTGAAGCGAGAGCTGACAGGAAGCCTGTTCTCAGGCCAGCGATCTG
 TACATGAGACCCAGGAATATTTCCAAAGCAAGATTCATATGCTGAAGGGTAACAGACAGAACCTCAAA
 CACTAACTTGATTGTTCCAGTTTACAGAGAAAATGGGATTCTGACTATGTGTTTGAAGGAAGCTTGCA
 GTAGGTCAAGAGACACAATTCAGGCAAGAGCCAATTAATCATAACAAAACCTCTCTAAGGAAAAGAGA
 AACTATAACAATCTGGAAGATGGTTCTATTTGGACGATTGAGAAGAAAAGTTTATAAATCGTGATTC
 AATTAATAATTTTCAAAAAGTTTCAAGTGTAAATAAAAACAACAGGCATCTATGCAGGAAAAAGCTTTTC
 AAGTGTAATGAATGAAGAAAACCTTTACCCAGAGCTCATCTTACTGTTTCATCAGAGAATTCACACTG
 GAGAGAAAACCTTATAAATGAATGAATGTGGGAAGGCCTTTAGTGACGGCTCATCCTTTGCCGACACCA
 GAGATGTCACACTGGCAAGAAGCCCTATGAGTGCATTGAGTGTGGGAAAGCTTTTACAGAACACATCC
 CTTATCCGTCACACTGGAGATACTATCATACTGGGAGAAAACCTTTGATTGCATCGATTGTGGGAAAGCCT
 TCAGTGACCACATAGGGCTTAATCAACACAGGAGAATTCATACTGGAGAGAAAACCTTACAATGTGATGT
 ATGTCACAAATCCTTCAGGTATGGTTCCCTCCTTACTGTACATCAAAGGATTCATACCGGAGAAAAACCA
 TATGAATGTGATGTTTGCAGAAAAGCCTTCAGCCATCATGCATCACTCAACATCAAAGAGTACATT
 CTGGAGAAAAGCCTTTAAGTGTAAAGAGTGCCGAAAAGCTTTTAGGCAGAAATATACACCTTGCCAGTCA
 TTTAAGGATTCATACTGGGAGAAAGCCTTTTGAATGTGCGGAGTGTGGAAAATCCTTCAGCATCAGTTCT
 CAGCTTGCCACTCATCAGAGAATCCATACTGGAGAGAAGCCCTATGAATGTAAGGTTTGTAGTAAAGCGT
 TCACCCAGAAGGCTCACCTTGCACAGCATCAGAAAACCCATACAGGAGAGAAAACCATATGAGTGAAGGA
 ATGCGGTAAAGCCTTCAGCCAGACCACACACCTCATTCAACATCAGAGAGTTCACACTGGTGAGAAAACCC
 TATAAATGTATGGAATGTGGGAAGGCCTTTGGTGATAACTCATCTGTACTCAACATCAAAGACTGCACA
 CTGGCCAAAGACCTTATGAATGTATTGAGTGTGGAAAGGCATTCAAGACAAAATCCTCCCTATTTGTCA
 TCGCAGAAGTCATACTGGAGAAAAACCTTATGAATGCAGTGTGTGTGGCAAAGCCTTTAGTCATCGTCAA
 TCCCTTAGTGTACATCAGAGAATCCATTCTGAAAGAAAACCATATGAATGTAAGGAATGTAGGAAAACCT
 TCATCCAAATTGGACACCTTAATCAACATAAGAGAGTTCATACTGGAGAGAGATCTTATAACTATAAGAA
 AAGCAGAAAAGTCTTCAGGCAAAGTCTCACTTAGCTCATCATCAGCAATTCATACTGGAGAGTGTGCA
 ACATGCCCTCTTACCTCCACGTCAAATCCTGTGGATCTGTTCCCAAATTTCTGGAATCCATCCT
 CCTCCCACCA

ACGCGTACGCGGCGCTCGAGCAGAAACTCATCTCAGAAGAGGATCTGGCAGCAATGATATCCTGGATT
 ACAAGGATGACGACGATAAGGTTTAA

Protein Sequence: >RC223876 protein sequence
 Red=Cloning site Green=Tags(s)

MRGAASASVREPTPLPGRGAPRTKPRAGRPTVGTPTATLVL PGRGRPRSRNGLASKGQRGAAPTGPGHRA
 LPSRD TALPQERNKLEAVGTGIEPKAMSQGLVTFGDVAVDFSQEEWELNPIQRNL YRKVMLENYRNLA
 SLGLCVSKPDVISSLEQKKEPWTVKRKMTRAWCPDLKAVWKIKELPLKKDFCEGKLSQAVITERLTSYNL
 EYSLLGEHWDYDALFETQPLVTIKNLAVDFRQQLHPAQKNFCKNGIWENNSDLGSAGHCVAKPDLVSL
 EQEKEPWMVKRELTGSLFSGQRSVHETQELFPKQDSYAEGVTDRTSNTKLDCCSSFRENWDSYVFRKLA
 VQETQFRQEPITHNKTL SKERERTYNKSGRWFYLLDDSEEKVHNRDSIKNFQKSSVVIKQTGIYAGKFL
 KCNECKKFTQSSSLTVHQRIHTGEKPYKCNECGKAFSDGSSFARHQ RCHTGKKPYECIECGKAFIQNTS
 LIRHWRYHTGEKPFDCIDCGKAFSDHIGLNQHRRHTGEKPYKCDVCHKSFYRGSLLTVHQRIHTGEK
 YECDVCRKAFSHASLTQHQRVHSGEKPFKCKEKGAFRQNIHLASHLRIHTGEKPFCEACGKSFSS
 QLATHQRIHTGEKPYECKVCSKAF TQKAHLAQHQKTHTGEKPYECKEKGAFSQTTHLIQHQRVHTGEK
 YKMECKGAFGDNSSCTQHQLHTGQRPYECIECGKAFKTKSSLICHRRSHTGEKPYECSVCGKAFSHRQ
 SLSVHQRHSGKKPYECKEKRKTFIQIGHLNQHKRVHTGERSYNYKSRKVFRQTAHLAHHQRIHTGESS
 TCSPLPSTSNPVDLFPKFLWNPSLSP

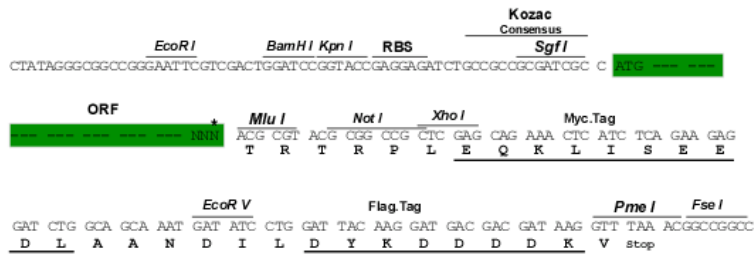
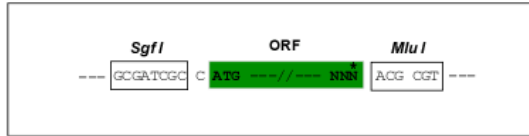
TRTRPLEQKLISEEDLAANDILDYKDDDDKV

Chromatograms: https://cdn.origene.com/chromatograms/mk6610_e06.zip

Restriction Sites: SgfI-MluI

Cloning Scheme:

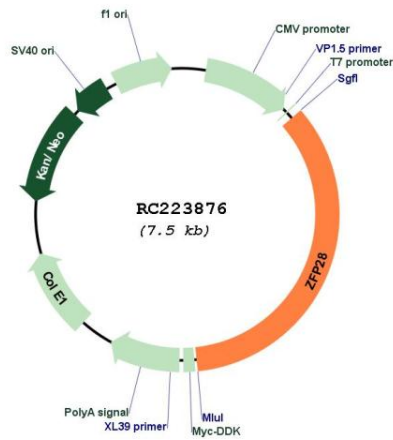
Cloning sites used for ORF Shuttling:



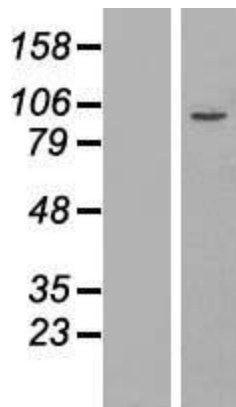
* The last codon before the Stop codon of the ORF

ACCN:	NM_020828
ORF Size:	2604 bp
OTI Disclaimer:	The molecular sequence of this clone aligns with the gene accession number as a point of reference only. However, individual transcript sequences of the same gene can differ through naturally occurring variations (e.g. polymorphisms), each with its own valid existence. This clone is substantially in agreement with the reference, but a complete review of all prevailing variants is recommended prior to use. More info
OTI Annotation:	This clone was engineered to express the complete ORF with an expression tag. Expression varies depending on the nature of the gene.
Components:	The ORF clone is ion-exchange column purified and shipped in a 2D barcoded Matrix tube containing 10ug of transfection-ready, dried plasmid DNA (reconstitute with 100 ul of water).
Reconstitution Method:	<ol style="list-style-type: none">1. Centrifuge at 5,000xg for 5min.2. Carefully open the tube and add 100ul of sterile water to dissolve the DNA.3. Close the tube and incubate for 10 minutes at room temperature.4. Briefly vortex the tube and then do a quick spin (less than 5000xg) to concentrate the liquid at the bottom.5. Store the suspended plasmid at -20°C. The DNA is stable for at least one year from date of shipping when stored at -20°C.
RefSeq:	NM_020828.1 , NP_065879.1
RefSeq Size:	4104 bp
RefSeq ORF:	2607 bp
Locus ID:	140612
UniProt ID:	Q8NHY6
Cytogenetics:	19q13.43
Domains:	KRAB, zf-C2H2
Protein Families:	Transcription Factors
MW:	98.7 kDa
Gene Summary:	May be involved in transcriptional regulation. May have a role in embryonic development. [UniProtKB/Swiss-Prot Function]

Product images:



Circular map for RC223876



Western blot validation of overexpression lysate (Cat# [LY412299]) using anti-DDK antibody (Cat# [TA50011-100]). Left: Cell lysates from untransfected HEK293T cells; Right: Cell lysates from HEK293T cells transfected with RC223876 using transfection reagent MegaTran 2.0 (Cat# [TT210002]).