

## Product datasheet for RC223874

### HTR1B (NM\_000863) Human Tagged ORF Clone

#### Product data:

Product Type:	Expression Plasmids
Product Name:	HTR1B (NM_000863) Human Tagged ORF Clone
Tag:	Myc-DDK
Symbol:	HTR1B
Synonyms:	5-HT-1B; 5-HT-1D-beta; 5-HT1B; 5-HT1DB; HTR1D2; HTR1DB; S12
Mammalian Cell Selection:	Neomycin
Vector:	pCMV6-Entry (PS100001)
E. coli Selection:	Kanamycin (25 ug/mL)
ORF Nucleotide Sequence:	>RC223874 representing NM_000863 Red=Cloning site Blue=ORF Green=Tags(s)

TTTTGTAATACGACTCACTATAGGGCGGCCGGGAATTCGTCGACTGGATCCGGTACCGAGGAGATCTGCC  
GCC**CGATCGCC**

ATGGAGGAACCGGGTCTCAGCGCGCTCCACCGCCGCCCGGGCTCCGAGACCTGGGTTCTCAAGCCA  
ACTTATCCTCTGCTCCCTCCAAAAGTGCAGCGCCAAGGACTACATTTACCAGGACTCCATCTCCCTACC  
CTGGAAAGTACTGCTGGTTATGCTATTGGCGCTCATCACCTTGGCCACCACGCTCTCCAATGCCTTTGTG  
ATTGCCACAGTGTACCGAACCCGAAAGTGCACACCCCGGCTAACTACCTGATCGCCTCTCTGGCGGTCA  
CCGACCTGCTTGTGCCATCCTGGTGTATGCCATCAGCACCATGTACACTGTCACCGGCCGCTGGACACT  
GGGCCAGGTGGTCTGTGACTTCTGGCTGTGTCGACATCACTTGTGACTGCCTCCATCCTGCACCTC  
TGTGTCATCGCCCTGGACCGCTACTGGGCCATCAGGACGCCGTGGAGTACTCAGCTAAAAGGACTCCCA  
AGAGGGCGGGTCCATGATCGCGCTGGTGTGGTCTTCTCCATCTCTATCTCGCTGCCGCCCTTCTCTG  
GCGTCAGGCTAAGGCCGAAGAGGAGGTGTGCGAATGCGTGGTGAACACCGACCACATCCTTACACGGTC  
TACTCCACGGTGGGTGCTTTCTACTTCCCACCCTGCTCCTCATCGCCCTCTATGGCCGATCTACGTAG  
AAGCCCGCTCCCGGATTTTGAACAGACGCCAACAGGACCGCAAGCGCTTGACCCGAGCCAGCTGAT  
AACCGACTCCCCGGGTCCACGTCTCGGTCACTCTATTAAGTGCAGTCTCCGACGCCCTGCTGAAAAGAAGAA  
TCCGGATCTCCTGTGTATGTGAACCAAGTCAAAGTGCAGTCTCCGACGCCCTGCTGAAAAGAAGAA  
TCATGGCCGCTAGGGAGCGCAAAGCCCAAGACCCTAGGGATCATTTTGGGAGCCTTTATTGTGTGTTG  
GCTACCCTTCTCATCATCTCCCTAGTGTGCCTATCTGCAAAGATGCCTGCTGGTTCCACCTAGCCATC  
TTTGACTTCTTACATGGCTGGGCTATCTCAACTCCCTCATCAACCCATAATCTATACCATGTCCAATG  
AGGACTTTAAACAAGCATTCCATAAACTGATACGTTTTAAGTGCACAAGT

**ACGCGT**ACGCGGCCGCTCGAGCAGAACTCATCTCAGAAGAGGATCTGGCAGCAAATGATATCCTGGATT  
ACAAGGATGACGACGATAAGGTTTAA



[View online »](#)

**Protein Sequence:** >RC223874 representing NM\_000863  
Red=Cloning site Green=Tags(s)

MEEPGAQRAPPPAGSETWVPQANLSSAPSONCSAKDYIYQDSISLPWKVLLVMLLALITLATTLSNAFV  
 IATVYRTRKLHTPANYL IASLAVTDLLVSILVMPISTMYTVTGRWTLGQVVCDFWLVSSDITCCTASILHL  
 CVIALDRYWAITDAVEYSAKRTPKRAAVMIALVWVFSISISLPPFFWRQAKAEEEEVSECVVNTDHILYTV  
 YSTVGAFYFPTLLLIALLYGRIYVEARSRLKQTPNRTGKRLTRAQLITDSPGSTSSVTSINSRVPDVPSE  
 SGPVYVNVQVKVRVSDALLEKKLMAARERKATKTLGIILGAFIVCWLPFFIISLVMPICKDACWFHLAI  
 FDFFTWLGYLNSLINPIIYTMSNEDFKQAFHKLIRFKCTS

TRTRPLEQKLISEEDLAANDILDYKDDDDKVK

**Chromatograms:** [https://cdn.origene.com/chromatograms/mk6249\\_f03.zip](https://cdn.origene.com/chromatograms/mk6249_f03.zip)

**Restriction Sites:** SgfI-MluI

**Cloning Scheme:**



\* The last codon before the Stop codon of the ORF

**ACCN:** NM\_000863

**ORF Size:** 1170 bp

**OTI Disclaimer:** The molecular sequence of this clone aligns with the gene accession number as a point of reference only. However, individual transcript sequences of the same gene can differ through naturally occurring variations (e.g. polymorphisms), each with its own valid existence. This clone is substantially in agreement with the reference, but a complete review of all prevailing variants is recommended prior to use. [More info](#)

**OTI Annotation:** This clone was engineered to express the complete ORF with an expression tag. Expression varies depending on the nature of the gene.

**Components:** The ORF clone is ion-exchange column purified and shipped in a 2D barcoded Matrix tube containing 10ug of transfection-ready, dried plasmid DNA (reconstitute with 100 ul of water).

**Reconstitution Method:**

1. Centrifuge at 5,000xg for 5min.
2. Carefully open the tube and add 100ul of sterile water to dissolve the DNA.
3. Close the tube and incubate for 10 minutes at room temperature.
4. Briefly vortex the tube and then do a quick spin (less than 5000xg) to concentrate the liquid at the bottom.
5. Store the suspended plasmid at -20°C. The DNA is stable for at least one year from date of shipping when stored at -20°C.

**RefSeq:** [NM\\_000863.3](#)

**RefSeq Size:** 1173 bp

**RefSeq ORF:** 1173 bp

**Locus ID:** 3351

**UniProt ID:** [P28222](#)

**Cytogenetics:** 6q14.1

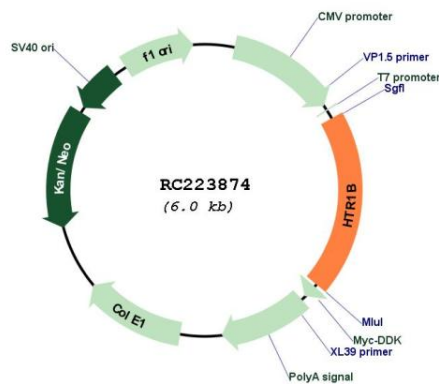
**Protein Families:** Druggable Genome, GPCR, Transmembrane

**Protein Pathways:** Neuroactive ligand-receptor interaction

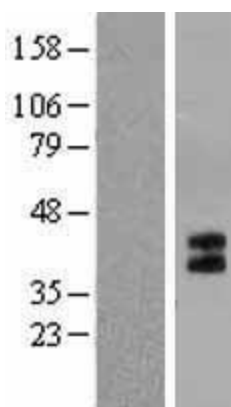
**MW:** 43.4 kDa

**Gene Summary:** The protein encoded by this intronless gene is a G-protein coupled receptor for serotonin (5-hydroxytryptamine). Ligand binding activates second messengers that inhibit the activity of adenylate cyclase and manage the release of serotonin, dopamine, and acetylcholine in the brain. The encoded protein may be involved in several neuropsychiatric disorders and therefore is often a target of antidepressant and other psychotherapeutic drugs. [provided by RefSeq, Nov 2015]

### Product images:



Circular map for RC223874



Western blot validation of overexpression lysate (Cat# [LY424477]) using anti-DDK antibody (Cat# [TA50011-100]). Left: Cell lysates from untransfected HEK293T cells; Right: Cell lysates from HEK293T cells transfected with RC223874 using transfection reagent MegaTran 2.0 (Cat# [TT210002]).