

Product datasheet for **RC223866**

TCP1 eta (CCT7) (NM_001009570) Human Tagged ORF Clone

Product data:

Product Type:	Expression Plasmids
Product Name:	TCP1 eta (CCT7) (NM_001009570) Human Tagged ORF Clone
Tag:	Myc-DDK
Symbol:	TCP1 eta
Synonyms:	CCTETA; CCTH; NIP7-1; TCP1ETA
Mammalian Cell Selection:	Neomycin
Vector:	pCMV6-Entry (PS100001)
E. coli Selection:	Kanamycin (25 ug/mL)
ORF Nucleotide Sequence:	>RC223866 representing NM_001009570 Red=Cloning site Blue=ORF Green=Tags(s)

TTTTGTAATACGACTCACTATAGGGCGGCCGGAATTCGTCGACTGGATCCGGTACCGAGGAGATCTGCC
GCC**CGATCGCC**

ATGATGGATTCTCAGCTGGTAGCTGGTGTGCATTCAAGAAGACTTTCTCTTACGCTGGGTTTGAATGC
AACCCAAAAAGTACCACAATCCCAAGATTGCCCTTTTGAATGTCGAGCTCGAGTTGAAAGCTGAGAAAGA
CAATGCTGAGATAAGAGTCCACACAGTTGAGGATTATCAGGCAATTGTTGATGCTGAGTGGAAACATTCTC
TATGACAAGTTAGAGAAGATCCATCATTCTGGAGCCAAAGTTGTCTTGCCAAACTCCCCATTGGGGATG
TGGCCACCCAGTACTTTGCTGACAGGGACATGTTCTGTGCTGGCCGAGTACCTGAGGAGGATCTGAAGAG
GACAATGATGGCCTGTGGAGGCTCAATCCAGACCAGTGTGAATGCTCTGTGAGCAGATGTGCTGGGTCTGA
TGCCAGGTGTTTGAAGAGACCCAGATTGGAGGCGAGAGGTACAATTTTTTACTGGCTGCCCAAGGCCA
AGACATGCACCTTCATTCTCCGTGGCGGCCGAGCAGTTTATGGAGGAGACAGAGCGGTCCCTGCATGA
TGCCATCATGATCGTCAGGAGGGCCATCAAGAATGATTCAGTGGTGGCTGGTGGCGGGGCCATTGAGATG
GAACTCTCAAGTACCTGCGGGATTACTCAAGGACTATTCAGGAAAACAGCAGCTGTTGATTGGGGCAT
ATGCCAAGGCCTTGAGATTATCCCACGCCAGCTGTGTGACAATGCTGGCTTTGATGCCACAAACATTCT
CAACAAGCTGCGGGCTCGCATGCCAGGGGGTACATGGTATGGAGTAGACATCAACAACGAGGACATT
GCTGACAACCTTGAAGCTTTCGTGTGGGAGCCAGCTATGGTGGGATCAATGCGCTGACAGCAGCCTCTG
AGGCTGCGTGCCTGATCGTGTCTGTAGATGAAACCATCAAGAACCCCGCTCGACTGTGGATGCTCCAC
AGCAGCAGGCCGGGGCCGTGGTCTGTGGCCGCCCCAC

ACGCGTACGCGGCCGCTCGAGCAGAAACTCATCTCAGAAGAGGATCTGGCAGCAATGATATCCTGGATT
ACAAGGATGACGACGATAAGGTTTAA



[View online »](#)

Protein Sequence: >RC223866 representing NM_001009570
 Red=Cloning site Green=Tags(s)

MMDSQLVAGVAFKKTFSYAGFEMQPKKYHNPKIALLNVELELKAEKDNAEIRVHTVEDYQAIVDAEWNIL
 YDKLEKIHHSAGKVVLSKLPIGDVATQYFADDMFCAGRVPEEDLKRTMMACGGSIQTSVNLASADVLGR
 CQVFEETQIGGERYNFFTGCPKAKTCTF ILRGGAEQFMEETERSLHDAIMIVRAIKNDSVAVGGGAIEM
 EL SKYL RDYSRTIPGKQQLLIGAYAKALEIIPRQLCDNAGFDATNILNKLRRARHAQGGTWTYGVDDINNEI
 ADNFEAFVWEPAMVRINALTAASEAACLIYSVDETIKNPRSTVDAPTAAGRGRGRGRPH

TRTRPLEQKLISEEDLAANDILDYKDDDDKV

Chromatograms: https://cdn.origene.com/chromatograms/mk8053_c08.zip

Restriction Sites: SgfI-MluI

Cloning Scheme:



* The last codon before the Stop codon of the ORF

ACCN: NM_001009570

ORF Size: 1017 bp

OTI Disclaimer: The molecular sequence of this clone aligns with the gene accession number as a point of reference only. However, individual transcript sequences of the same gene can differ through naturally occurring variations (e.g. polymorphisms), each with its own valid existence. This clone is substantially in agreement with the reference, but a complete review of all prevailing variants is recommended prior to use. [More info](#)

OTI Annotation: This clone was engineered to express the complete ORF with an expression tag. Expression varies depending on the nature of the gene.

Components: The ORF clone is ion-exchange column purified and shipped in a 2D barcoded Matrix tube containing 10ug of transfection-ready, dried plasmid DNA (reconstitute with 100 ul of water).

Reconstitution Method:

1. Centrifuge at 5,000xg for 5min.
2. Carefully open the tube and add 100ul of sterile water to dissolve the DNA.
3. Close the tube and incubate for 10 minutes at room temperature.
4. Briefly vortex the tube and then do a quick spin (less than 5000xg) to concentrate the liquid at the bottom.
5. Store the suspended plasmid at -20°C. The DNA is stable for at least one year from date of shipping when stored at -20°C.

RefSeq: [NM_001009570.2](#), [NP_001009570.1](#)

RefSeq Size: 1280 bp

RefSeq ORF: 1020 bp

Locus ID: 10574

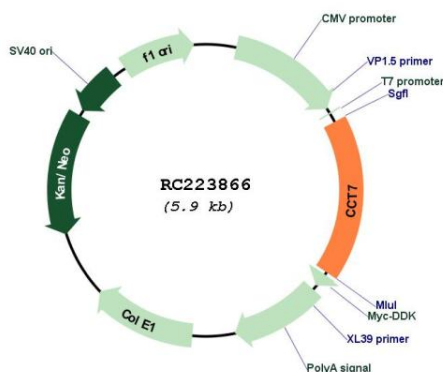
UniProt ID: [Q99832](#)

Cytogenetics: 2p13.2

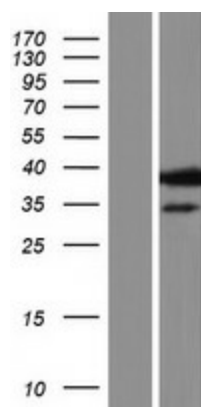
MW: 37.3 kDa

Gene Summary: This gene encodes a molecular chaperone that is a member of the chaperonin containing TCP1 complex (CCT), also known as the TCP1 ring complex (TRiC). This complex consists of two identical stacked rings, each containing eight different proteins. Unfolded polypeptides enter the central cavity of the complex and are folded in an ATP-dependent manner. The complex folds various proteins, including actin and tubulin. Alternative splicing results in multiple transcript variants. Related pseudogenes have been identified on chromosomes 5 and 6. [provided by RefSeq, Oct 2009]

Product images:



Circular map for RC223866



Western blot validation of overexpression lysate (Cat# [LY422918]) using anti-DDK antibody (Cat# [TA50011-100]). Left: Cell lysates from untransfected HEK293T cells; Right: Cell lysates from HEK293T cells transfected with RC223866 using transfection reagent MegaTran 2.0 (Cat# [TT210002]).