

## Product datasheet for **RC223861**

### Prickle (PRICKLE1) (NM\_153026) Human Tagged ORF Clone

#### Product data:

Product Type:	Expression Plasmids
Product Name:	Prickle (PRICKLE1) (NM_153026) Human Tagged ORF Clone
Tag:	Myc-DDK
Symbol:	Prickle
Synonyms:	EPM1B; RILP
Mammalian Cell Selection:	Neomycin
Vector:	pCMV6-Entry (PS100001)
E. coli Selection:	Kanamycin (25 ug/mL)



[View online »](#)

**ORF Nucleotide  
Sequence:**

>RC223861 representing NM\_153026  
 Red=Cloning site Blue=ORF Green=Tags(s)

TTTTGTAATACGACTCACTATAGGGCGGCCGGGAATTCGTCGACTGGATCCGGTACCGAGGAGATCTGCC  
 GCC**CGGATCGCC**

ATGCCTTTGGAGATGGAGCCCAAGATGAGCAAAGTGGCCTTTGGTGTGCAGAGAAGTCCACATCAGATG  
 ATGACTCTGGCTGTGCATTGGAGGAGTACGCCTGGGTCCCCCGGCCTGAGACCAGAGCAGATCCAGCT  
 CTATTTTGCTTGCTTACCAGAGGAAAAAGTTCCTTACGTTAACAGCCCCGGAGAGAAGCATCGGATTA  
 CAGCTTTTGTACCAGTTACCACCACATGATAATGAGGTACGGTATTGCCAGTCTTTGAGTGAAGAGGAGA  
 AAAAGAGTTGCAGGTGTTCAAGTGTGAGTGTGAGCAGTGTGGTTTGAAGATAAATGGAGGTGAAGTGCAGTG  
 GTCCAGAGCAGTCATGCATGCTGTGTGAGCAGTGTGGTTTGAAGATAAATGGAGGTGAAGTGCAGTG  
 TTCGCCTCCCGTCCGGCCCTGGTGTGCTGGCACCCATCCTGTTTTGTCTGTTTACGTGTAATGAGC  
 TGCTGGTCCAGCTCATCTATTTTATCAGGATGGAAAAATCACTGTGGCAGGCACCATGCAGAAGTCT  
 CAAACCACGGTGTCTCAGCATGTGACGAGATAATTTTGTCTGATGAGTGCACAGAAGCTGAGGGTCCGCAT  
 TGGCACATGAAACACTTCTGCTGCCTTGTGAGTGTGAAACGGTCTGGGAGGACAGAGGTATATCATGAAGG  
 ACGGCCGCCCTTCTGCTGTGGCTGTTTTGAGTCTCTCTATGCGGAGTACTGTGAAACCTGTGGGAAACA  
 TATTGGTGTGGACCATGCACAGATGACCTATGACGGGCAGCACTGGCACGCCACGGAAGCCTGCTTTTCT  
 TGTGCCAGTGTAAAGCCTCTTTGTTGGGATGTCCCTTCCCTCCCAAACAGGGTCAAGTTACTGCTCAA  
 AAACGTGCAGTCTTGGTGAAGACGTCCATGCCTCTGATTCTTCCGACTCTGCATTTCACTCAGCTCGATC  
 AAGAGACTCCCGAAGAAGTGTCCGAATGGGCAAGAGCAGCCGGTCAAGCAGATCAGTGTAGACAGTCTCTC  
 CTCTTATCGCCTGCTCTGAACAACAAGTTTCTGGCCTCTCAGGCAATGCTGATGACACCCTTTCTCGAA  
 AATTGGATGATCGAGTCTCTCCAGACAAGGAACAAGTTTTGCCAGTGAAGAATTTGGAAAGCCAGAT  
 AGAGCAGGAAACTCCAGAAGACCCTGAAGAATGGGCTGATCATGAAGATTATATGACGCAGCTCCTCCTC  
 AAGTTTGGTGATAAAAAGCCTCTTTCAGCCACAGCCCAATGAGATGGATATTTCGAGCCAGTGAAGTGG  
 TATCTGATAACATGGTTAAAAGTAAAGCCGAGTTAAAGCAAAAATAACCAGAGCCTTGCAAGTAAAAAATA  
 CCAGTCTGATATGTACTGGGCACAGTCAACAAGTGGACTGGGCGATTCTGCTTATGGCAGCCACCCAGGC  
 CCTGCAAGCAGTAGAAGGCTTCCAGGAATTGGAAGTGGACCATGGGCTTCCAGGTATAATCATGATGAAA  
 CACAGTGGTATGAAGATCCCTGGAGTGTCTGTCAGACCTGAAACCAGAGCAAAGTGTCCGGATTTCGAT  
 GGATTCTTTGGCATTGTCCAATATCACAGGGGCTTCGGTGGATGGAGAAAACAAGCCAAGGCCATCATTG  
 TATTCTCTGCAAAATTTGAGGAGATGGAAACAGAAGATTGTGAGAAGATGAGCAATATGGGAACCTTGA  
 ACTCTTCCATGCTGCACAGGAGTGCAGAGTCTTAAAGAGTCTAAGTTCAGAGTTGTGTCCAGAGAAAAAT  
 CCTGCCTGAAGAGAAGCCAGTACATCTGCCAGTGTCTCAGAAGGTCCAAGTCTCAATCCAGACCCAGCAG  
 GTCAAGTTCTCCGATGATGTCATTGACAATGGGAATGACATTGAAATCCGGCAGCCTCCGATGAGTG  
 AAAGGACTCGGAGACGCTTACAATTTGAGAGAGGGGATCCAGGTCTCATCACCACCGCCCGCCGGAG  
 AAGTAGAAAGTCCCGCTCCGACAATGCCCTGAATCTTGTACAGAAAGAAAACTCTCCAAGGACAGA  
 CTGCGGCTGTACACCCCGATAACTATGAGAAATTTATACAGAATAAAAGTGCACGAGATCCAAGCAT  
 ACATCCAGAATGCTGATCTCTACGGACAGTACGCCATGCCACTCCGATTATGGCCTGCAGAACCAGG  
 AATGAATCGGTTTCTGGACTCTACGGCAGGATGATGATTCTGGTGTCTTCTCTCTCTCTCTCTCTCTCC  
 GACTCGGAAGAAGAAGGATATTTTCTGGACAACCAATCCCTCAACCCCGCCACAGAGATTTTGCCTACT  
 ATACAGATGACCTTTCTAGTCCACCATCTGCACTTCCCACCCCTCAGTTTGGTCCAGAGGACAACAAAATC  
 CAAGAAGAAAAAGGGACACAAGGGCAAAAATTGTATTATTTCTAGCGGACCG

AG**CGGACCG**ACGCGTACGCGGCCGCTCGAGCAGAACTCATCTCAGAAGAGGATCTGGCAGCAAATGATATCC  
 TGGATTACAAGGATGACGACGATAAGGTTTAA

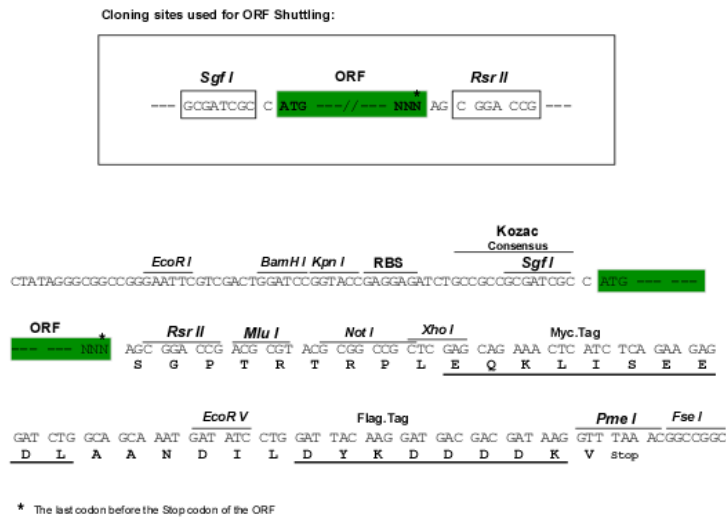
**Protein Sequence:** >RC223861 representing NM\_153026  
Red=Cloning site Green=Tags(s)

MPLMEPKMSKLAFGCQRSSTDDDSGCALEEYAWVPPGLRPEQIQLYFACLPEEKVPYVNSPGEKHKRIK  
QLLYQLPPHDNEVRYCQSLSEEEKKELQVFSQRKKEALGRGTIKLLSRAVMHAVCEQCGLKINGGEVAV  
FASRAGPGVCWHPSCFVCFNELLVDLIYFYQDGKIHCGRHHAELLKPRCSACDEIIFADECTEAEGRH  
WHMKHFCCLECEIVLGGQRYIMKDGRPFCCGCFESLYAEYCETCGEHIGVDHAQMTYDGGHWHATEACFS  
CAQCKASLLGCPFLPKQGQIYCSKTCSLGEDVHASDSSDAFQSARSRDSRRSVRMGKSSRSADQCRQSL  
LLSPALNYKFPGLSGNADDTLSRKLDDLSDLRQGTSFASEEFWKGRVEQETPEDPEEWADHEDYMTQLLL  
KFGDKSLFQPQPNEMDIRASEHWISDNMVKSKTELKQNNQSLASKKYQSDMYWAQSQDGLGDSAYGSHPG  
PASSRRLQELEDHGASGYNHDETQWYEDSLECLSDLKPEQSVRDSMDSLALSNITGASVDGENKPRPSL  
YSLQNFEEEMETEDCEKMSNMGTLNSSMLHRSAESLKSLSSELCPKILPEEKPVHLPVLRSSKSQSRPQQ  
VKFSDDIVDNGNYDIEIRQPPMSERTRRRVYNFEERGSRSHHRRRRSRKSRSDNALNLVTERKYSKDR  
LRLYTPDNYEKFIQNKSAIEIQAYIQNADLYGQYAHATSDYGLQNPGMNRFGLYGEDDDSWCSSSSSSS  
DSEEEGYFLGQPIQPRPQRFAYYTDDLSSPPSALPTPQFGQRTTKSKKKKGHKGNKCIISGP

SGPTRRRLEQKLISEEDLAANDILDYKDDDDKV

**Chromatograms:** [https://cdn.origene.com/chromatograms/mk6184\\_d11.zip](https://cdn.origene.com/chromatograms/mk6184_d11.zip)

**Restriction Sites:** Sgfl-RsrII

**Cloning Scheme:**


**ACCN:** NM\_153026

**ORF Size:** 2502 bp

**OTI Disclaimer:** The molecular sequence of this clone aligns with the gene accession number as a point of reference only. However, individual transcript sequences of the same gene can differ through naturally occurring variations (e.g. polymorphisms), each with its own valid existence. This clone is substantially in agreement with the reference, but a complete review of all prevailing variants is recommended prior to use. [More info](#)

**OTI Annotation:** This clone was engineered to express the complete ORF with an expression tag. Expression varies depending on the nature of the gene.

**Components:** The ORF clone is ion-exchange column purified and shipped in a 2D barcoded Matrix tube containing 10ug of transfection-ready, dried plasmid DNA (reconstitute with 100 ul of water).

**Reconstitution Method:**

1. Centrifuge at 5,000xg for 5min.
2. Carefully open the tube and add 100ul of sterile water to dissolve the DNA.
3. Close the tube and incubate for 10 minutes at room temperature.
4. Briefly vortex the tube and then do a quick spin (less than 5000xg) to concentrate the liquid at the bottom.
5. Store the suspended plasmid at -20°C. The DNA is stable for at least one year from date of shipping when stored at -20°C.

**RefSeq:** [NM\\_153026.3](#)

**RefSeq Size:** 3293 bp

**RefSeq ORF:** 2496 bp

**Locus ID:** 144165

**UniProt ID:** [Q96MT3](#)

**Cytogenetics:** 12q12

**Domains:** LIM

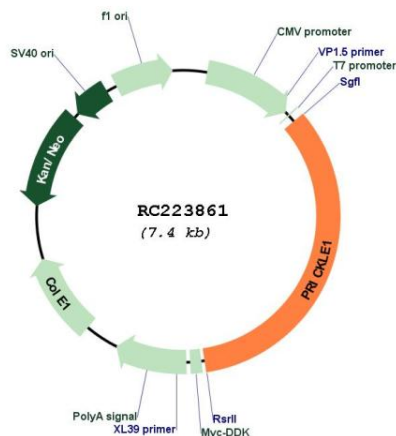
**Protein Families:** Druggable Genome

**Protein Pathways:** Wnt signaling pathway

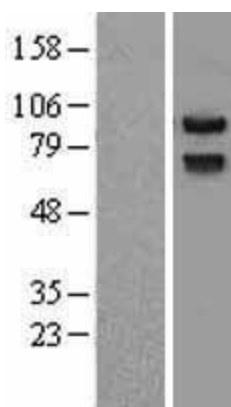
**MW:** 94.1 kDa

**Gene Summary:** This gene encodes a nuclear receptor that may be a negative regulator of the Wnt/beta-catenin signaling pathway. The encoded protein localizes to the nuclear membrane and has been implicated in the nuclear trafficking of the transcription repressors REST/NRSF and REST4. Mutations in this gene have been linked to progressive myoclonus epilepsy. Alternate splicing results in multiple transcript variants. A pseudogene of this gene is found on chromosome 3. [provided by RefSeq, Sep 2009]

## Product images:



Circular map for RC223861



Western blot validation of overexpression lysate (Cat# [LY403502]) using anti-DDK antibody (Cat# [TA50011-100]). Left: Cell lysates from untransfected HEK293T cells; Right: Cell lysates from HEK293T cells transfected with RC223861 using transfection reagent MegaTran 2.0 (Cat# [TT210002]).