

Product datasheet for **RC223860**

REG3A (NM_138938) Human Tagged ORF Clone

Product data:

Product Type: Expression Plasmids
Product Name: REG3A (NM_138938) Human Tagged ORF Clone
Tag: Myc-DDK
Symbol: REG3A
Synonyms: HIP; HIP/PAP; INGAP; PAP; PAP-H; PAP1; PBCGF; REG-III; REG3
Mammalian Cell Selection: Neomycin
Vector: pCMV6-Entry (PS100001)
E. coli Selection: Kanamycin (25 ug/mL)
ORF Nucleotide Sequence: >RC223860 ORF sequence
Red=Cloning site Blue=ORF Green=Tags(s)

TTTGTAAATACGACTCACTATAGGGCGCCGGGAATTCGTCGACTGGATCCGGTACCGAGGAGATCTGCC
GCC**CGATCGCC**

ATGCTGCCTCCCATGGCCCTGCCAGTGTATCTTGGATGCTGCTTCTGCCTCATGCTGCTGTCTCAGG
TTCAAGGTGAAGAACCCAGAGGAACTGCCCTGACGGATCCGCTGTCCAAAGGCTCAAGGCCTA
TGGCTCCCAGTGTATGCCTTGTCTTGTGTCACCAAATCTGGACAGATGCAGATCTGGCCTGCCAGAAG
CGGCCCTCGAAACCTGGTGTCTGTGCTCAGTGGGCTGAGGGATCCTCGTGTCTCCCTGGTGAAGA
GCATTGGTAACAGCTACTACATGCTGGATTGGGCTCCATGACCCACACAGGGCACCGAGCCCAATGG
AGAAGGTTGGGAGTGGAGTAGCAGTGTGATGAATTACTTTGCATGGGAGAGAAATCCCTCCACCATC
TCAAGCCCGGCCACTGTGCGAGCCTGTCGAGAAGCACAGCATTCTGAGGTGAAAAGATTATAACTGTA
ATGTGAGGTTACCCTATGTCTGCAAGTTCACTGAC

ACGCGTACGCGGCCGCTCGAGCAGAACTCATCTCAGAAGAGGATCTGGCAGCAAATGATATCCTGGATT
ACAAGGATGACGACGATAAGGTTTAA

Protein Sequence: >RC223860 protein sequence
Red=Cloning site Green=Tags(s)

MLPPMALPSVSWMLLSCLMLLSQVQGEEPPQRELPSARIRCPKGSKAYGSHCYALFLSPKSWTDADLACQK
RPSGNLVSVLGAEGSFVSSLVKSIGNSYSYVWIGLHDPTQGTEPNGEGWEWSSSDVMNYFAWERNPSTI
SSPGHCASLSRSTAFLRWKDYNVRLPYVCKFTD

TRTRPLEQKLISEEDLAANDILDYKDDDDKV

Chromatograms: https://cdn.origene.com/chromatograms/mk6022_b06.zip



[View online »](#)

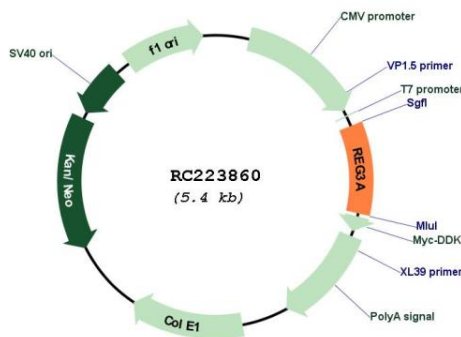
Cytogenetics: 2p12

Protein Families: Druggable Genome, Secreted Protein

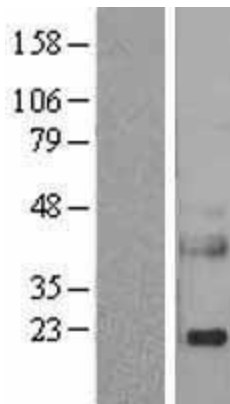
MW: 19.4 kDa

Gene Summary: This gene encodes a pancreatic secretory protein that may be involved in cell proliferation or differentiation. It has similarity to the C-type lectin superfamily. The enhanced expression of this gene is observed during pancreatic inflammation and liver carcinogenesis. The mature protein also functions as an antimicrobial protein with antibacterial activity. Alternate splicing results in multiple transcript variants that encode the same protein.[provided by RefSeq, Nov 2014]

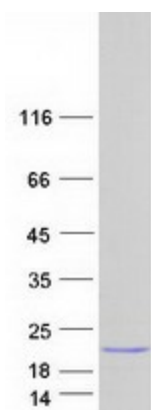
Product images:



Circular map for RC223860



Western blot validation of overexpression lysate (Cat# [LY408478]) using anti-DDK antibody (Cat# [TA50011-100]). Left: Cell lysates from untransfected HEK293T cells; Right: Cell lysates from HEK293T cells transfected with RC223860 using transfection reagent MegaTran 2.0 (Cat# [TT210002]).



Coomassie blue staining of purified REG3A protein (Cat# [TP323860]). The protein was produced from HEK293T cells transfected with REG3A cDNA clone (Cat# RC223860) using MegaTran 2.0 (Cat# [TT210002]).