

Product datasheet for **RC223854**

RUNX1 (NM_001001890) Human Tagged ORF Clone

Product data:

Product Type:	Expression Plasmids
Product Name:	RUNX1 (NM_001001890) Human Tagged ORF Clone
Tag:	Myc-DDK
Symbol:	RUNX1
Synonyms:	AML1; AML1-EVI-1; AMLCR1; CBF2alpha; CBFA2; EVI-1; PEBP2aB; PEBP2alpha
Mammalian Cell Selection:	Neomycin
Vector:	pCMV6-Entry (PS100001)
E. coli Selection:	Kanamycin (25 ug/mL)



[View online »](#)

ORF Nucleotide Sequence:

>RC223854 representing NM_001001890
 Red=Cloning site Blue=ORF Green=Tags(s)

TTTTGTAATACGACTCACTATAGGGCGGCCGGAATTCGTCGACTGGATCCGGTACCGAGGAGATCTGCC
 GCC**CGGATCGCC**

ATGCGTATCCCCGTAGATGCCAGCACGAGCCGCCCTTACGCCGCCCTTCCACCGCGCTGAGCCCAGGCA
 AGATGAGCGAGGCGTTGCCGCTGGGCGCCCCGGACGCCGGCGCTGCCCTGGCCGGCAAGCTGAGGAGCGG
 CGACCGCAGCATGGTGGAGGTGCTGGCCGACCACCCGGGCGAGCTGGTGCACCGACAGCCCAACTTC
 CTCTGCTCCGTGCTGCCTACGACTGGCGCTGCAACAAGACCCTGCCATCGCTTTCAAGGTGGTGGCC
 TAGGGGATGTTCCAGATGGCACTCTGGTCACTGTGATGGCTGGCAATGATGAAACTACTCGGCTGAGCT
 GAGAAATGCTACCGCAGCCATGAAGAACCAGGTTGCAAGATTTAATGACCTCAGGTTTGTGCGTGAAGT
 GGAAGAGGGAAAAGCTTCACTCTGACCATCACTGTCTTCAAAACCCACCGCAAGTCGCCACCTACCACA
 GAGCCATCAAAATCACAGTGGATGGGCCCGAGAACCCTGAAGACATCGGCAGAACTAGATGATCAGAC
 CAAGCCCGGAGCTTGTCTTTTCCGAGCGGCTCAGTGAAGTGGAGCAGCTGCGGCGCACAGCCATGAGG
 GTCAGCCACACCCAGCCGCCACGCCAACCCCTCGTCCCTGACCCACTCCACTGCCTTTAACCT
 CTCAGCCTCAGAGTCAGATGCAGGATACAAGGCAGATCCAACCATCCCCACCGTGGTCTACGATCAGTC
 CTACCAATACCTGGGATCCATTGCCTCTCTTCTGTGCACCCAGCAACGCCCATTTACCTGGACGTGCC
 AGCGGCATGACAACCTCTCTGCAGAACTTTCCAGTCGACTCTCAACGGCACCCGACCTGACAGCGTTCA
 GCGACCCGCGCCAGTTCCTCCGCTGCCCTCCATCTCCGACCCCGCATGCACTATCCAGGCGCCTTCA
 CACTCCCCGACGCCGGTCACTCGGCATCGGCATCGGCATGTCGGCCATGGGCTCGGCCACGCGCTAC
 CACACCTACCTGCCGCCCTACCCCGGCTCGTCGAAGCGCAGGGAGGCCGTTCCAAGCCAGCTCGC
 CCTCTACCACCTGTACTACGGCGCTCGGCCGCTCCTACCAGTTCCTCATGGTGGGCGGCGAGCGCTC
 GCCGCGCGCATCTGCCGCCCTGCACCAACGCCCTCCACCGCTCCGCGCTGCTCAACCCAGCCTCCCG
 AACCCAGAGCGACGTGGTGGAGGCCGAGGCAGCCACAGCAACTCCCCACCAACATGGCGCCTCCGCGC
 GCCTGGAGGAGCCGTGTGGAGGCCCTAC

ACGCGTACGCGGCCGCTCGAGCAGAACTCATCTCAGAAGAGGATCTGGCAGCAAATGATATCTGGATT
 ACAAGGATGACGACGATAAGGTTTAA

Protein Sequence:

>RC223854 representing NM_001001890
 Red=Cloning site Green=Tags(s)

MRIPVDASTSRRFTPPSTALSPGKMSEALPLGAPDAGAALAGKLRSGDRSMVEVLADHPGELVRTDSPNF
 LCSVLPHTWRCNKTLPIAFKVVVALGDVPDGLVTVMAGNDENYSaelRNATAAMKNQVARFNDLRFVGRS
 GRGKSFTLTITVFTNPPQVATYHRAIKITVDGPREPRRHQKLDQTKPGSLSFSERLSELEQLRRTAMR
 VSPHHPAPTNPASLNHSTAFNPQPSQMQDTRQIQSPSPWSYDQSYQYLGSIASPSVHPATPISPGRA
 SGMTTLSAELSSRLSTAPDLTAFSDPRQFPALPSISDPRMHYPGAFYSPPTVTSIGIGMSAMGSATRY
 HTYLPPTYPGSSQAQGGPFQASSPSYHLYYGASAGSYQFSMVGGERSPPRILPPCTNASTGSALLNPSLP
 NQSDVVEAEGSHSNSPTNMAPSARLEEAVWRPY

TRTRPLEQKLISEEDLAANDILDYKDDDDKV

Restriction Sites:

SgfI-MluI

Cloning Scheme:


ACCN: NM_001001890

ORF Size: 1359 bp

OTI Disclaimer: Due to the inherent nature of this plasmid, standard methods to replicate additional amounts of DNA in E. coli are highly likely to result in mutations and/or rearrangements. Therefore, OriGene does not guarantee the capability to replicate this plasmid DNA. Additional amounts of DNA can be purchased from OriGene with batch-specific, full-sequence verification at a reduced cost. Please contact our customer care team at custsupport@origene.com or by calling 301.340.3188 option 3 for pricing and delivery.

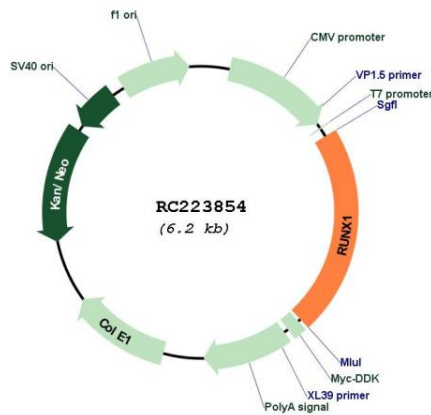
The molecular sequence of this clone aligns with the gene accession number as a point of reference only. However, individual transcript sequences of the same gene can differ through naturally occurring variations (e.g. polymorphisms), each with its own valid existence. This clone is substantially in agreement with the reference, but a complete review of all prevailing variants is recommended prior to use. [More info](#)

OTI Annotation: This clone was engineered to express the complete ORF with an expression tag. Expression varies depending on the nature of the gene.

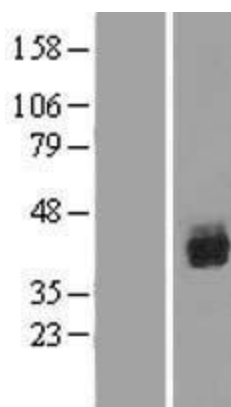
Components: The ORF clone is ion-exchange column purified and shipped in a 2D barcoded Matrix tube containing 10ug of transfection-ready, dried plasmid DNA (reconstitute with 100 ul of water).

- Reconstitution Method:**
1. Centrifuge at 5,000xg for 5min.
 2. Carefully open the tube and add 100ul of sterile water to dissolve the DNA.
 3. Close the tube and incubate for 10 minutes at room temperature.
 4. Briefly vortex the tube and then do a quick spin (less than 5000xg) to concentrate the liquid at the bottom.
 5. Store the suspended plasmid at -20°C. The DNA is stable for at least one year from date of shipping when stored at -20°C.

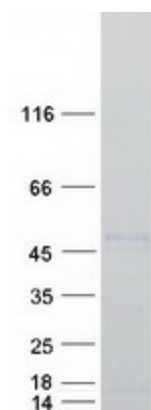
RefSeq: [NM_001001890.3](#)
RefSeq Size: 7288 bp
RefSeq ORF: 1362 bp
Locus ID: 861
UniProt ID: [Q01196](#)
Cytogenetics: 21q22.12
Protein Families: Druggable Genome, ES Cell Differentiation/IPS, Transcription Factors
Protein Pathways: Acute myeloid leukemia, Chronic myeloid leukemia, Pathways in cancer
MW: 48.6 kDa
Gene Summary: Core binding factor (CBF) is a heterodimeric transcription factor that binds to the core element of many enhancers and promoters. The protein encoded by this gene represents the alpha subunit of CBF and is thought to be involved in the development of normal hematopoiesis. Chromosomal translocations involving this gene are well-documented and have been associated with several types of leukemia. Three transcript variants encoding different isoforms have been found for this gene. [provided by RefSeq, Jul 2008]

Product images:


Circular map for RC223854



Western blot validation of overexpression lysate (Cat# [LY424261]) using anti-DDK antibody (Cat# [TA50011-100]). Left: Cell lysates from untransfected HEK293T cells; Right: Cell lysates from HEK293T cells transfected with RC223854 using transfection reagent MegaTran 2.0 (Cat# [TT210002]).



Coomassie blue staining of purified RUNX1 protein (Cat# [TP323854]). The protein was produced from HEK293T cells transfected with RUNX1 cDNA clone (Cat# RC223854) using MegaTran 2.0 (Cat# [TT210002]).