

Product datasheet for **RC223841**

Apc11 (ANAPC11) (NM_001002245) Human Tagged ORF Clone

Product data:

Product Type: Expression Plasmids
Product Name: Apc11 (ANAPC11) (NM_001002245) Human Tagged ORF Clone
Tag: Myc-DDK
Symbol: Apc11
Synonyms: APC11; Apc11p; HSPC214
Mammalian Cell Selection: Neomycin
Vector: pCMV6-Entry (PS100001)
E. coli Selection: Kanamycin (25 ug/mL)
ORF Nucleotide Sequence: >RC223841 ORF sequence
Red=Cloning site Blue=ORF Green=Tags(s)

TTTTGTAATACGACTCACTATAGGGCGGCCGGAATTCGTCGACTGGATCCGGTACCGAGGAGATCTGCC
GCC**CGATCGCC**

RCATGAAGGTGAAGATTAAGTGCTGGAACGGCGTGGCCACTTGGCTCTGGGTGGCCAACGATGAGAACTG
TGGCATCTGCAGGATGGCATTAAACGGATGCTGCCCTGACTGCAAGGTGCCCGGCGACTGCCCGCTG
GTGTGGGGCCAGTGCTCCACTGCTCCACATGCATTGCATCCTCAAGTGGCTGCACGCACAGCAGGTGC
AGCAGCACTGCCCATGTGCCCGCAGGAATGGAAGTTCAAGGAG

ACGCGTACGCGGCCGCTCGAGCAGAACTCATCTCAGAAGAGGATCTGGCAGCAAATGATATCCTGGATT
ACAAGGATGACGACGATAAGGTTTAA

Protein Sequence: >RC223841 protein sequence
Red=Cloning site Green=Tags(s)

X*R*RLSAGTAWPLGSGWPTMRTVASAGWHLTDAALTARCPATTARWCGASAPTASTCIASSSGCHSR
SSTAPCAARNGSSR

TRTRPLEQKLISEEDLAANDILDYKDDDDKV

Chromatograms: https://cdn.origene.com/chromatograms/mk6486_c01.zip

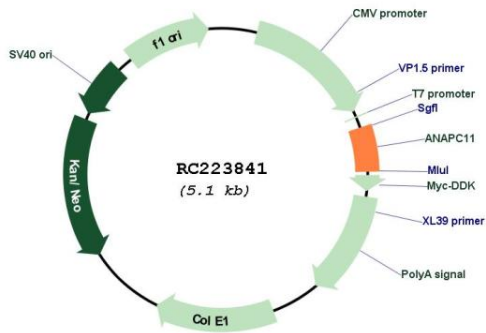
Restriction Sites: Sgfl-MluI



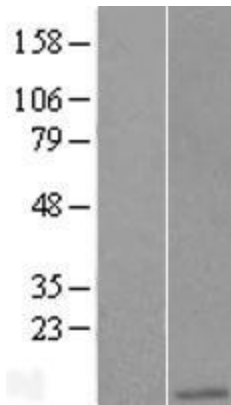
[View online »](#)

Reconstitution Method:	<ol style="list-style-type: none">1. Centrifuge at 5,000xg for 5min.2. Carefully open the tube and add 100ul of sterile water to dissolve the DNA.3. Close the tube and incubate for 10 minutes at room temperature.4. Briefly vortex the tube and then do a quick spin (less than 5000xg) to concentrate the liquid at the bottom.5. Store the suspended plasmid at -20°C. The DNA is stable for at least one year from date of shipping when stored at -20°C.
RefSeq:	NM_001002245.2
RefSeq Size:	855 bp
RefSeq ORF:	255 bp
Locus ID:	51529
UniProt ID:	Q9NYG5
Cytogenetics:	17q25.3
Protein Families:	Druggable Genome
Protein Pathways:	Cell cycle, Oocyte meiosis, Progesterone-mediated oocyte maturation, Ubiquitin mediated proteolysis
MW:	9.8 kDa
Gene Summary:	Together with the cullin protein ANAPC2, constitutes the catalytic component of the anaphase promoting complex/cyclosome (APC/C), a cell cycle-regulated E3 ubiquitin ligase that controls progression through mitosis and the G1 phase of the cell cycle. The APC/C complex acts by mediating ubiquitination and subsequent degradation of target proteins: it mainly mediates the formation of 'Lys-11'-linked polyubiquitin chains and, to a lower extent, the formation of 'Lys-48'- and 'Lys-63'-linked polyubiquitin chains. May recruit the E2 ubiquitin-conjugating enzymes to the complex.[UniProtKB/Swiss-Prot Function]

Product images:



Circular map for RC223841



Western blot validation of overexpression lysate (Cat# [LY424186]) using anti-DDK antibody (Cat# [TA50011-100]). Left: Cell lysates from untransfected HEK293T cells; Right: Cell lysates from HEK293T cells transfected with [RC224701] using transfection reagent MegaTran 2.0 (Cat# [TT210002]).