

Product datasheet for **RC223840**

ZNF32 (NM_006973) Human Tagged ORF Clone

Product data:

Product Type:	Expression Plasmids
Product Name:	ZNF32 (NM_006973) Human Tagged ORF Clone
Tag:	Myc-DDK
Symbol:	ZNF32
Synonyms:	KOX30; Zfp637; ZNF637
Mammalian Cell Selection:	Neomycin
Vector:	pCMV6-Entry (PS100001)
E. coli Selection:	Kanamycin (25 ug/mL)
ORF Nucleotide Sequence:	>RC223840 ORF sequence Red=Cloning site Blue=ORF Green=Tags(s)

TTTTGTAATACGACTCACTATAGGGCGGCCGGAATTCGTCGACTGGATCCGGTACCGAGGAGATCTGCC
GCC**CGATCGCC**

ATGTTTGGATTTCCAACAGCTACCCTGCTGGACTGTCATGGAAGATATGCCCAGAATGTAGCGTTCTTCA
ATGTGATGACTGAAGCCACCACAAATATGACCACTCTGAGGCTACAGGATCCTCAAGCTGGGATATCCA
AAATTCTTTCAGAAGAGAGAAGCTGGAACAAAAATCCCCAGATTCGAAGACACTACAGGAAGATTCACCT
GGAGTGAGACAAAGGGTCTATGAGTGCCAGGAGTGTGAAAAATCCTTCCGGCAAAAAGGTAGTCTAACGT
TACATGAGAGAATCCACACTGGTCAAAGCCTTTTGTGAGTGCACCCACTGTGAAAAAGCTTCAGGGCCAA
AGGCAATCTTGTTACACATCAACGGATACACACGGGAGAGAAGCCTTATCAGTGAAGGAGTGTGGGAAA
AGCTTCAGTCAACGAGGTAGTCTCGCTGTCCACGAGAGACTCCACACTGGACAGAAAACCTACGAGTGTG
CTATTTGTGAGAGAAGCTTCAGGAATCAGAGTAACCTTGCTGTTACAGGAGAGTTCACAGTGGTGAGAA
GCCCTATAGATGTGATCAGTGTGGAAAAGCCTTCAGTCAGAAAAGGAAGCTTAATTGTTACATCAGAGTC
CACACAGGCTGAAGCCCTATGCCTGTACCCAGTGCAGGAAGAGTTTCCACACAGGGGGAATTGTATTC
TGCATGGCAAAAATCCACACAGGAGAGACCCCTATCTGTGCGGCCAGTGTGAAAAAGCTTCACCCAGAG
AGGGAGTCTGGCTGTGCACCAGCGAAGCTGCTCACAGAGGCTCACCCCT

ACGCGTACGCGGCCGCTCGAGCAGAAACTCATCTCAGAAGAGGATCTGGCAGCAAATGATATCCTGGATT
ACAAGGATGACGACGATAAGGTTTAA



Protein Sequence: >RC223840 protein sequence
 Red=Cloning site Green=Tags(s)

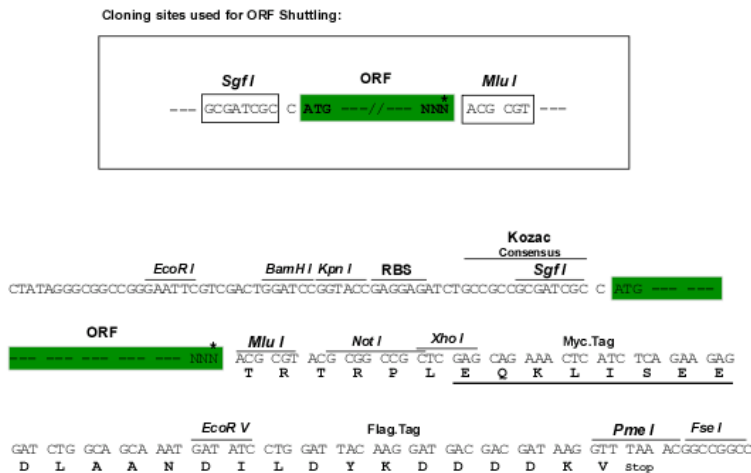
MFGFPTATLLDCHGRYAQNVAFFNVMTEAHHKYDHEATGSSSWDIQNSFRREKLEQKSPDSKTLQEDSP
 GVRQRVYECQECGKSFQRQKGSLLTHERIHTGQKPFECTHCGKSFRAKGNLVTHQRHTGEKPYQCKECCGK
 SF5QRGSLAVHERLHTGQKPYECAICQRSFRNQNLAHVHRRVHSGEKPYRCDQCGKAF5QKGSLLIVHIRV
 HTGLKPYACTQCRKSFHTRGNCILHGKIHTGETPYLGGQCGKSF5TQRGSLAVHQRSCSQRLTL

TRTRPLEQKLISEEDLAANDILDYKDDDDKV

Chromatograms: https://cdn.origene.com/chromatograms/mk6426_g02.zip

Restriction Sites: SgfI-MluI

Cloning Scheme:



* The last codon before the Stop codon of the ORF

ACCN: NM_006973

ORF Size: 822 bp

OTI Disclaimer: The molecular sequence of this clone aligns with the gene accession number as a point of reference only. However, individual transcript sequences of the same gene can differ through naturally occurring variations (e.g. polymorphisms), each with its own valid existence. This clone is substantially in agreement with the reference, but a complete review of all prevailing variants is recommended prior to use. [More info](#)

OTI Annotation: This clone was engineered to express the complete ORF with an expression tag. Expression varies depending on the nature of the gene.

Components: The ORF clone is ion-exchange column purified and shipped in a 2D barcoded Matrix tube containing 10ug of transfection-ready, dried plasmid DNA (reconstitute with 100 ul of water).

Reconstitution Method:

1. Centrifuge at 5,000xg for 5min.
2. Carefully open the tube and add 100ul of sterile water to dissolve the DNA.
3. Close the tube and incubate for 10 minutes at room temperature.
4. Briefly vortex the tube and then do a quick spin (less than 5000xg) to concentrate the liquid at the bottom.
5. Store the suspended plasmid at -20°C. The DNA is stable for at least one year from date of shipping when stored at -20°C.

RefSeq: [NM_006973.3](#)

RefSeq Size: 1159 bp

RefSeq ORF: 822 bp

Locus ID: 7580

UniProt ID: [P17041](#)

Cytogenetics: 10q11.21

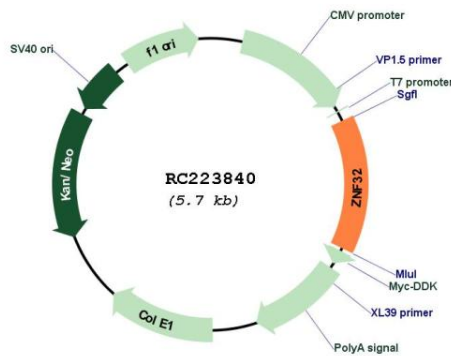
Domains: zf-C2H2

Protein Families: Transcription Factors

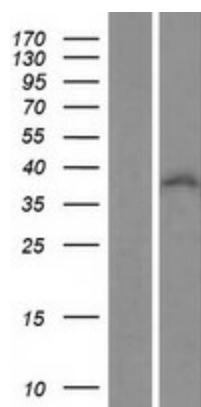
MW: 31 kDa

Gene Summary: May be involved in transcriptional regulation.[UniProtKB/Swiss-Prot Function]

Product images:



Circular map for RC223840



Western blot validation of overexpression lysate (Cat# [LY416292]) using anti-DDK antibody (Cat# [TA50011-100]). Left: Cell lysates from untransfected HEK293T cells; Right: Cell lysates from HEK293T cells transfected with RC223840 using transfection reagent MegaTran 2.0 (Cat# [TT210002]).