

Product datasheet for **RC223839**

ATP11A (NM_015205) Human Tagged ORF Clone

Product data:

Product Type:	Expression Plasmids
Product Name:	ATP11A (NM_015205) Human Tagged ORF Clone
Tag:	Myc-DDK
Symbol:	ATP11A
Synonyms:	ATPIH; ATPIS
Vector:	pCMV6-Entry (PS100001)
E. coli Selection:	Kanamycin (25 ug/mL)
Cell Selection:	Neomycin
ORF Nucleotide Sequence:	>RC223839 representing NM_015205 Red=Cloning site Blue=ORF Green=Tags(s)

TTTTGTAATACGACTCACTATAGGGCGCCGGAATTCGTCGACTGGATCCGGTACCGAGGAGATCTGCC
GCC**CGATCGCC**

ATGGACTGCAGCCTCGTGGCAGCCTCGTGACAGATACTGTGCAGGAGAAGAGAATTGGTGGACAGCA
GGACCATCTACGTGGGACACAGGGAGCCACCTCCGGGCGCAGAGGCTACATCCACAGAGATACCCAGA
CAACAGGATCGTCTCGTCCAAGTACACATTTTGAACCTTATACCCAAGAATTTATTTGAACAATTCAGA
AGAGTAGCCAACCTTTATTTCTTATCATATTTCTGGTGCAGTTGATTATTGATACACCCACAAGTCCAG
TGACAAGCGGACTTCCACTCTTCTTTGTCATTACTGTGACGGCTATCAAACAGGGTTATGAAGACTGGCT
TCGACATAAAGCAGACAATGCCATGAACCAAGTGTCTGTTTATTTCATTTCAGCACGGCAAGCTCGTTCGG
AAACAAAGTCGAAAGCTGCGAGTTGGGGACATTGTTCATGGTTAAGGAGGACGAGACCTTTCCCTGCGACT
TGATCTTCTTTCCAGCAACCGGGGAGATGGGACGTGCCACGTACCACCGCCAGCTTGGATGGAGAATC
CAGCCATAAACCGCATTACGCGGTCCAGGACACCAAGGCTTCCACACAGAGGAGGATATCGGCGGACTT
CACGCCACCATCGAGTGTGAGCAGCCCCAGCCCCACCTCTACAAGTTCGTGGTTCGCATCAACGTTTACA
GTGACCTGAATGACCCCGTGGTGGGCCCCCTTAGGATCGGAAAACCTGCTGCTTAGAGGAGCTACACTGAA
GAACACTGAGAAAATCTTTGGTGGCTATTTACACGGGAATGGAACCAAGATGGCATTAAATTATCAA
TCAAAATCTCAGAAGCGATCTGCCGTGGAAAAATCGATGAATGCGTTTCTCATTGTGTATCTCTGCATTC
TGATCAGCAAAGCCCTGATAAACACTGTGCTGAAATACATGTGGCAGAGTGAAGCCCTTTCGGGATGAGCC
GTGGTATAATCAGAAAACGGAGTCGAAAAGGCAGAGGAATCTGTTCTCAAGGCATTACCGGACTTCTGTG
GCCTTCATGGTCTCTTTAACTACATCATCCCTGTGTCCATGTACGTACGGTTCGAGATGCAGAAGTTCC
TCGGCTCTTACTCATCACCTGGACGAAGACATGTTTGACGAGGAGACTGGCGAGGGCCCTCTGGTGAA
CACGTCGGACCTCAATGAAGAGCTGGGACAGGTGGAGTACATCTTACAGACAAGACCGGCACCCTCACG
GAAAACAACATGGAGTTCAAGGAGTGTGCATCGAAGGCCATGTCTACGTGCCCCACGTCTGCAACG
GGCAGGTCTCCAGAGTCGTACGGAATCGACATGATTGACTCGTCCCCACGCTCAACGGGAGGGAGCG
CGAGGAGCTGTTTTCCGGGCCCTCTGTCTCTGCCACACCGTCCAGGTGAAAGACGATGACAGCGTAGAC
GGCCCCAGGAAATCGCCGGACGGGGGAAATCCTGTGTGTACATCTCATCTCGCCCGACGAGGTGGCGC



TGGTCGAAGGTGTCCAGAGACTTGGCTTACCTACCTAAGGCTGAAGGACAATTACATGGAGATATTA
 CAGGGAGAACCACATCGAAAGGTTTGAATTGCTGGAAATTTGAGTTTTGACTCAGTCAGAAGGAGAATG
 AGTGTAATTGTA AAAATCTGCTACAGGAGAAATTTATCTGTTTTGCAAAGGAGCAGATTCTTCGATATTCC
 CCCGAGTGATAGAAGGCAAAGTTGACCAGATCCGAGCCAGAGTGGAGCGTAACGCAGTGGAGGGCTCCG
 AACTTTGTGTGTTGCTTATAAAGGCTGATCCAAGAAGAATATGAAGGCATTTGTAAGCTGCTGCAGGT
 GCCAAAGTGGCCCTTCAAGATCGAGAGAAAAAGTTAGCAGAAGCCTATGAGCAAAATAGAGAAAGATCTTA
 CTCTGCTTGGTGCTACAGCTGTTGAGGACCGGCTGCAGGAGAAAGCTGCAGACACCATCGAGCCCTGCA
 GAAGGCCGGGATCAAAGTCTGGTTCTCACGGGAGACAAGATGGAGACGGCCGCGCCACGTGCTACGCC
 TGCAAGCTCTTCCGACAGGAACACGCAGCTGCTGGAGCTGACCACCAAGAGGATCGAGGAGCAGAGCTGC
 ACGACGCTCTGTTGAGCTGAGCAAGACGGTCTGCGCCACAGCGGGAGCCTGACCAGAGACAACCTGTC
 CGGACTTTCAGCAGATATGCAGGACTACGGTTAATTATCGACGGAGCTGCACTGTCTCTGATAATGAAG
 CCTCGAGAAGACGGGAGTCCGGCAACTACAGGGAGCTTCTGGAATCTGCCGGAGCTGCAGCGCGG
 TGCTCTGCTGCCGATGGCGCCCTGCAGAAGGCTCAGATTGTTAAATTAATCAAATTTTCAAAGAGCA
 CCCAATCAGTTAGCAATTGGCGATGGTCAAATGATGTCAGCATGATTCTGGAAGCGCAGCTGGGCATA
 GGTGTCATCGGAAGGAAGGCCCGCAGGCTGCCAGGAACAGCAGCTATGCAATCCCAAAGTTTAAAGCATT
 TGAAGAAGATGCTGCTTGTTCACGGGCATTTTTATTACATTAGGATCTCTGAGCTCGTGCAGTACTTCTT
 CTATAAGAAGCTGCTTTCATCTTCCCTCAGTTTTTATACCAGTCTTCTGTGGTTTTTCAACAGACT
 TTGTACGACACCGGTATCTGACCCTCTACAACATCAGCTTACCTCCCTCCCATCCTCTGTACAGCC
 TCATGGAGCAGCATGTTGGCATTGACGTGCTCAAGAGAGACCCGACCCTGTACAGGGACGTGCCTCAAGAA
 TGCCCTGCTGCGTGGCGGTGTTACTACTGGACGCTCCTGGGACTGTTTGACGCACTGGTGTCTTCT
 TTTGGTGCTTATTTGCTGTTTAAAATAACAACGTGACAAGCAACGGGCAGATATTTGAAAAGTGGAGCT
 TTGGAACGCTGGTATTCACCGTATGGTGTTCACAGTTACACTAAAGCTGCATTGGACACACACTACTG
 GACTTGGATCAACCATTTTGTCACTGGGGTGGCTGCTGTTTCTACGTTGCTTTTTGCTCTCTGGGGA
 GGAGTGATCTGGCGTCTCAACTACAGAGGATGTAACGTGTTTCCAGATGCTCCAGGCTCCAGCGGGC
 CCGCCTGGCTGGCCATCGTGTGCTGGTACCATCAGCCTCCTCCCGACGCTCCTCAAGAAAGTCTGTG
 CCGGCAGCTGTGGCAACAGCAACAGAGAGAGTCCAGACTAAGAGCCAGTGCCTTTCTGTGAGCAGTCA
 ACCATCTTTATGCTTTCTCAGACTTCCAGCAGCTGAGTTTC

ACGCGTACGCGGCCGCTCGAGCAGAACTCATCTCAGAAGAGGATCTGGCAGCAATGATATCCTGGATT
 ACAAGGATGACGACGATAAGGTTTAA

Protein Sequence:

>RC223839 representing NM_015205
 Red=Cloning site Green=Tags(s)

MDCSLVRTL VHYRCAGEENWVDSRTIYVGHREPPPGAEAYIPQRYPDNRIVSSKYTFWNFIPKNLFEQFR
 RVANFYFLIIFLVQLIIDTPTSPVTSGLPLFFVITVTAIKQGYEDWLRHKADNAMNQCPVHFIQHGKLV
 KQSRKLRVGDIVMVKEDTFPCDLIFLSSNRGDGTCHVTASLDGESSHKTHYAVQDTKGFHTEEDIGGL
 HATIECEQPQPDLYKFVGRINVYSDLNPPVVRPLGSENLRLRGATLKNTEKIFGVAIYTMETKMALNYQ
 SKSQKRS AVEKSMNAFLIVYLCILISKALINTVLKYMWQSEPFREPWYNQKTESERQRNFLKAFDFL
 AFMVLFNVIIPVSMYVTVEMQKFLGYSFITWDEDMFDEETGEGPLVNTSDLNEELGQVEYIFTDKTGLT
 ENNMEFKECCIEGHVYVPHVICNGQVLPESSGIDMIDSSPSVNGREREELFFRALCLCHTVQVKDDSDV
 GPRKSPDGGKSCVYISSPDEVALVEGVQRLGFTYLRKLDNYMEILNRENHIERFELLEILSFDVRRRM
 SVIVKSATGEIYLFCKGADSSIFPRVIEGKVDQIRARVERNAVEGLRTLCAVYKRLIQEEYEGICKLLQA
 AKVALQDREKKLA EAYEQIEKDLTLLGATAVEDRLQEKAADTIEALQKAGIKVWVLTDGKMETAAATCYA
 CKLFRNTQLLELTTRKIEEQSLHDVLFELSKTVLRHSGSLTRDNL SGLSADMQDYGLIIDGAALSLIMK
 PREDGSSGNRELFLIEICRSCSAVLCRMAPLQKAQIVKLIKFSKEHPITLAIGDGANDVSMILEAHVGI
 GVI GKEGRQAARNSDYAIPKFKHLKMLLVHGHFYIRISELVQYFFYKNVCFIFPQFLYQFCGFSQQT
 LYDTAYLTLYNI SFTSLPILLYSLMEQHVIGIDVLKRDPTLYRDVAKNALLRWRVFIYWTLLGLFDALVFF
 FGAYFVFENTTTSNGQIFGNWTFGTLVFTVMVFTVTLKLALDTHYWTWINHFVIWGSLLFYVVSLLWG
 GVIWPFLNYQRMYYVFIQMLSSGPAWLAIVLLVTISLLPDVLKKVLCRQLWPTATERVQTKSQLSVEQS
 TIFMLSQTSSLSF

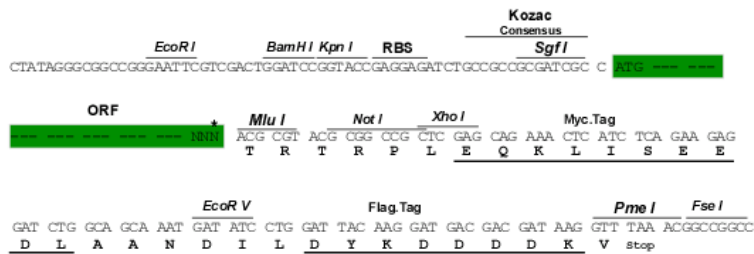
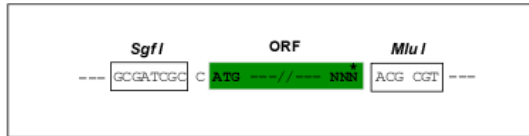
TRTRPLEQKLI SEEDLAANDILDYKDDDDKV

Restriction Sites:

SgfI-MluI

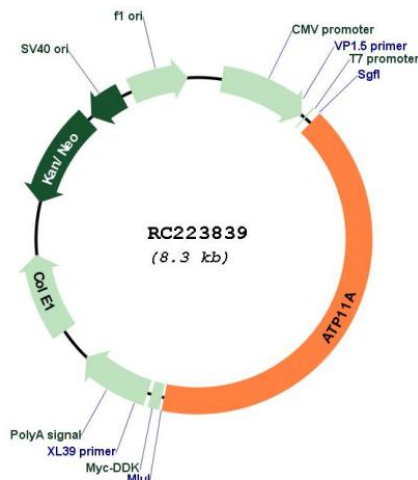
Cloning Scheme:

Cloning sites used for ORF Shuttling:



* The last codon before the Stop codon of the ORF

Plasmid Map:



ACCN: NM_015205

ORF Size: 3402 bp

OTI Disclaimer: The molecular sequence of this clone aligns with the gene accession number as a point of reference only. However, individual transcript sequences of the same gene can differ through naturally occurring variations (e.g. polymorphisms), each with its own valid existence. This clone is substantially in agreement with the reference, but a complete review of all prevailing variants is recommended prior to use. [More info](#)

OTI Annotation: This clone was engineered to express the complete ORF with an expression tag. Expression varies depending on the nature of the gene.

Components: The ORF clone is ion-exchange column purified and shipped in a 2D barcoded Matrix tube containing 10ug of transfection-ready, dried plasmid DNA (reconstitute with 100 ul of water).

Reconstitution Method:

1. Centrifuge at 5,000xg for 5min.
2. Carefully open the tube and add 100ul of sterile water to dissolve the DNA.
3. Close the tube and incubate for 10 minutes at room temperature.
4. Briefly vortex the tube and then do a quick spin (less than 5000xg) to concentrate the liquid at the bottom.
5. Store the suspended plasmid at -20°C. The DNA is stable for at least one year from date of shipping when stored at -20°C.

RefSeq: [NM_015205.2](#), [NP_056020.2](#)

RefSeq Size: 8795 bp

RefSeq ORF: 3405 bp

Locus ID: 23250

UniProt ID: [P98196](#)

Cytogenetics: 13q34

Protein Families: Transmembrane

MW: 129.8 kDa

Gene Summary: The protein encoded by this gene is an integral membrane ATPase. The encoded protein is probably phosphorylated in its intermediate state and likely drives the transport of ions such as calcium across membranes. Two transcript variants encoding different isoforms have been found for this gene. [provided by RefSeq, Jul 2008]