

Product datasheet for **RC223834**

GALNT10 (NM_198321) Human Tagged ORF Clone

Product data:

Product Type:	Expression Plasmids
Product Name:	GALNT10 (NM_198321) Human Tagged ORF Clone
Tag:	Myc-DDK
Symbol:	GALNT10
Synonyms:	GALNACT10; PPGALNACT10; PPGANTASE10
Mammalian Cell Selection:	Neomycin
Vector:	pCMV6-Entry (PS100001)
E. coli Selection:	Kanamycin (25 ug/mL)



[View online »](#)

ORF Nucleotide Sequence:

>RC223834 representing NM_198321
 Red=Cloning site Blue=ORF Green=Tags(s)

TTTTGTAATACGACTCACTATAGGGCGGCCGGGAATTCGTCGACTGGATCCGGTACCGAGGAGATCTGCC
 GCCCGCATCGCC

ATGAGCGGAAGGAGAAGCGGCTCTGCAGCGGTGGCGTGGTCTGGCGGCCCTGGTCTCTGCCCA
 ACGTGGGGCTTTGGGCGCTGTACCGCGAGCGGCAGCCGACGGCACCCCTGGGGGATCGGGGCGCGGT
 GGCCTGGCGCGGGGACAGGGCTCACACAGTCGACAAAAGAAAACGTTTTTCTTGGGAGATGGGAGAA
 CTGAAGGACTGGCATGACAAGGAGGCCATCCGGAGGGACGCTCAGCGCTAGGAAATGGAGAAACAAGAA
 GACCTTACCCCATGACCGATGCTGAGAGAGTGGATCAGGCATACCGAGAAAATGGATTTAACATCTACGT
 CAGTGATAAAATCTCCTGAATCGCTCTCTCCAGATATCCGGCACCCAAACTGCAACAGCAAGCGCTAC
 CTGGAGACTTCCCAACACAAGCATCATATCCCTTCCACAACGAGGGCTGGTCTCCCTCTCCGCA
 CCGTCCACAGTGTCTCAATCGCTCGCTCCAGAGCTGGTCCGCGAGATTGTACTGGTGCAGCAGTTCAG
 TGATCGAGAGCACCTGAAGAAGCCTCTGAAGACTACATGGCCCTTTTCCCAGTGTGAGGATTCTCGA
 ACCAAGAAAACGGGAAGGGCTGATAAGGACCCGAATGCTGGGGGCCCTCAGTGGCAACTGGGGATGTCATCA
 CATTCTTGGATTCACTGTGAAGCCAATGTCAACTGGCTTCCCCCTTGCTTGACCGCATTGCTCGGAA
 CCGCAAGACCATTTGTGTGCCGATGATTGATGTAATTGACCATGACGACTTTCGGTACGAGACACAGGCA
 GGGGATGCCATGCGGGGAGCCTTTGACTGGGAGATGACTACAAGCGGATCCCGATCCCTCCAGAAGTGC
 AGAAAGCTGACCCAGCGACCCATTTGAGTCTCCCGTGTGGCCGGTGGACTGTTCCGCGTGGATCGGAA
 GTGGTTCTGGAACTCGGCGGTATGACCCAGGCTTGAGATCTGGGGAGGGGAGCAGTATGAAATCTCC
 TTCAAGGTGGATGTGTGGGGCCGATGGAGGACATCCCTGCTCCAGGTGGCCATATCTACAGGA
 AGTATGTGCCCTACAAGTCCCGCCGGAGTCAGCCTGGCCGGAACCTTAAGCGGTGGCCGAAGTGTG
 GATGGATGAGTACGACAGTACATTTACCAGCGCCGCCCTGAATACCGCCACCTCTCCGCTGGGGATGTC
 GCAGTCCAGAAAAGCTCCGACGCTCCCTTAAGTCAAGAGTTTCAAGTGGTTTATGACGAAGATAGCCT
 GGGACCTGCCAAATTCTACCCACCCGTTGGAGCCCGGCTGCAGCTTGGGGGAGATCCGAAATGTGGG
 CACAGGGCTGTGTGCAGACACAAAGCACGGGCCCTTGGGCTCCCCACTAAGGCTAGAGGGCTGCGTCCGA
 GGCCGTGGGGAGGCTGCCTGGAACAACATGCAGGTATTCACCTTACCTGGAGAGAGGACATCCGGCCTG
 GAGACCCCGACACCAAGAAGTTCTGCTTTGATGCCATTTCCACACCCAGCCCTGTACGCTGTACGA
 CTGCCACAGCATGAAGGGCAACCAGCTGTGAAATACCGCAAAGACAAGACCCTGTACCACCTGTCACT
 GGCAGCTGCATGGACTGCAGTGAAGTACCATAGGATCTTCATGAACACCTGCAACCCATCCTCTCTCA
 CCCAGCAGTGGCTGTTTGAACACACCAACTCAACAGTCTTGAAAAATCAATAGGAAC

ACGCGTACGCGGCGGCTCGAGCAGAAACTCATCTCAGAAGAGGATCTGGCAGCAAATGATATCCTGGATT
 ACAAGGATGACGACGATAAGGTTTAA

Protein Sequence:

>RC223834 representing NM_198321
 Red=Cloning site Green=Tags(s)

MRRKEKRLQLAVALVLAALVLLPNVGLWALYRERQPDGTPGGSGAAVAPAAGQGSRSRQKKTFFLDGQK
 LKDWDHKEAIRRDAQRVGNQEGRPYPMTDAERVDQAYRENGFNIVSDKISLNRSLPDIRHPNCSKRY
 LETLPNTSIIIPFHNEGWSLLRVTVHSLNRSPPPELVAEIVLVDDFSDREHLKKPLEDYMALFSPVRILR
 TKKREGLIRTRMLGASVATGDVITFLDSHCEANVNWLPPLLDRIARNRKTIVCPMIDVIDHDDFRYETQA
 GDAMRGAFDWEMYKRIPIPELQKADPSDPFESPMAGGLFAVDRKWFELGGYDPLEIWGGEQYEIS
 FKVWMCGRMEDIPCSRVGHIYRKYVPYKVPAGVSLARNLKRVAEVMDEYAEIYQRRPEYRHL SAGDV
 AVQKRLRSSLNCKSFKWFMKIAWDLPKFYPPVEPPAAWGEIRNVGTGLCADTKHGALGSPLRLEGCVR
 GRGEAAWNMQVFTFTWREDIRPGDPQHTKFCDAISHTSPVTLYDCHSMKGNQLWKYRKDKTL YHPVS
 GSCMDCSESDHRIFMNTCNPSSLTQQWLF EHTNSTVLEKFNRN

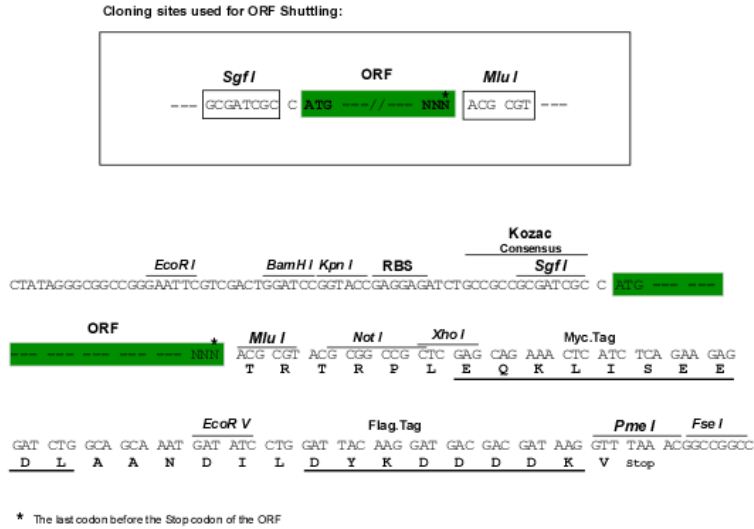
TRTRPLEQKLI SEEDLAANDILDYKDDDDKV

Chromatograms:

https://cdn.origene.com/chromatograms/mk6505_a06.zip

Restriction Sites: SgfI-MluI

Cloning Scheme:



ACCN: NM_198321

ORF Size: 1809 bp

OTI Disclaimer: The molecular sequence of this clone aligns with the gene accession number as a point of reference only. However, individual transcript sequences of the same gene can differ through naturally occurring variations (e.g. polymorphisms), each with its own valid existence. This clone is substantially in agreement with the reference, but a complete review of all prevailing variants is recommended prior to use. [More info](#)

OTI Annotation: This clone was engineered to express the complete ORF with an expression tag. Expression varies depending on the nature of the gene.

Components: The ORF clone is ion-exchange column purified and shipped in a 2D barcoded Matrix tube containing 10ug of transfection-ready, dried plasmid DNA (reconstitute with 100 ul of water).

- Reconstitution Method:
1. Centrifuge at 5,000xg for 5min.
 2. Carefully open the tube and add 100ul of sterile water to dissolve the DNA.
 3. Close the tube and incubate for 10 minutes at room temperature.
 4. Briefly vortex the tube and then do a quick spin (less than 5000xg) to concentrate the liquid at the bottom.
 5. Store the suspended plasmid at -20°C. The DNA is stable for at least one year from date of shipping when stored at -20°C.

RefSeq: [NM_198321.4](#)

RefSeq Size: 5222 bp

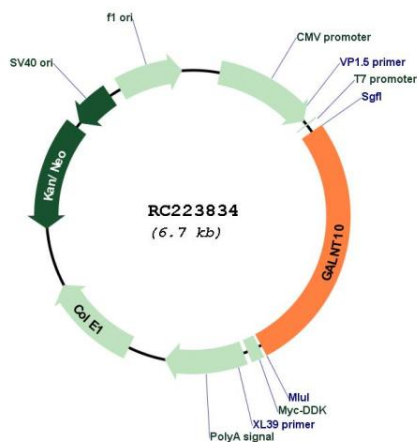
RefSeq ORF: 1812 bp

Locus ID: 55568

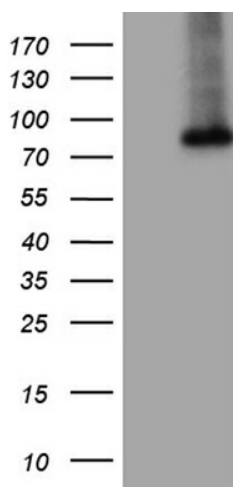
UniProt ID: [Q86SR1](#)
Cytogenetics: 5q33.2
Protein Families: Transmembrane
Protein Pathways: Metabolic pathways, O-Glycan biosynthesis
MW: 68.8 kDa

Gene Summary: This gene encodes a member of the GalNAc polypeptide N-acetylgalactosaminyltransferases. These enzymes catalyze the first step in the synthesis of mucin-type oligosaccharides. These proteins transfer GalNAc from UDP-GalNAc to either serine or threonine residues of polypeptide acceptors. The protein encoded by this locus may have increased catalytic activity toward glycosylated peptides compared to activity toward non-glycosylated peptides. [provided by RefSeq, Apr 2010]

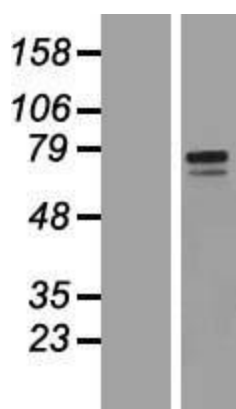
Product images:



Circular map for RC223834



HEK293T cells were transfected with the pCMV6-ENTRY control (Cat# [PS100001], Left lane) or pCMV6-ENTRY GALNT10 (Cat# RC223834, Right lane) cDNA for 48 hrs and lysed. Equivalent amounts of cell lysates (5 ug per lane) were separated by SDS-PAGE and immunoblotted with anti-GALNT10 (Cat# [TA809396])(1:2000). Positive lysates [LY405019] (100ug) and [LC405019] (20ug) can be purchased separately from OriGene.



Western blot validation of overexpression lysate (Cat# [LY405019]) using anti-DDK antibody (Cat# [TA50011-100]). Left: Cell lysates from untransfected HEK293T cells; Right: Cell lysates from HEK293T cells transfected with RC223834 using transfection reagent MegaTran 2.0 (Cat# [TT210002]).