

Product datasheet for RC223832

DUOX1 (NM_175940) Human Tagged ORF Clone

Product data:

Product Type:	Expression Plasmids
Product Name:	DUOX1 (NM_175940) Human Tagged ORF Clone
Tag:	Myc-DDK
Symbol:	DUOX1
Synonyms:	LNOX1; NOXF1; THOX1
Mammalian Cell Selection:	Neomycin
Vector:	pCMV6-Entry (PS100001)
E. coli Selection:	Kanamycin (25 ug/mL)
ORF Nucleotide Sequence:	>RC223832 representing NM_175940 Red=Cloning site Blue=ORF Green=Tags(s)

TTTTGTAATACGACTCACTATAGGGCGCCGGGAATTCGTCGACTGGATCCGGTACCGAGGAGATCTGCC
GCC**CGATCGCC**

ATGGGCTTCTGCCTGGCTCTAGCATGGACACTTCTGGTTGGGCGCATGGACCCCTCTGGGAGCTCAGAACC
CCATTTCTGGGAGGTGCAGCGATTTGATGGTGGTACAACAACCTCATGGAGCACAGATGGGCGAGCAA
AGGCTCCCGGCTGCAGCGCCTGGTCCCAGCCAGCTATGCAGATGGCGTGTACCAGCCCTGGGAGAACC
CACCTGCCAACCCCGAGACCTTAGCAACACCATCTCAAGGGCCCTGCAGGGCTGGCCTCCCTGAGAA
ACCGCACAGTGTGGGGTCTTCTTTGGCTATCACGTGCTTTCAGACCTGGTGAGCGTGGAACTCCCGG
CTGCCCGCCGAGTTCTCAACATTCGCATCCCGCCGGAGACCCATGTTTCGACCCGACCAGCGCGGG
GACGTGGTGTGCCCTTCCAGAGAAGCCGCTGGGACCCCGAGACCGGACGGAGTCCAGCAATCCCGGG
ACCCGGCAACCAGGTGACGGGCTGGCTGGACGGCAGCGCCATCTATGGTTCTCGCATTCTGGAGCGA
CGCGCTGCGGAGCTTCTCCAGGGGACAGCTGGCGTCCGGGCCCCGACCCCGCTTTTCCCGAGACTCGCA
AACCCCTGTCTATGTGGGCGCGCCCGACCCCGCCACCGGGCAGAACGGGCCCGGGGGCTGTACGCC
TCGGGGCAGAGAGAGGGAACCGGAACCTTCTGCAGGCGTGGGCTGCTCTGGTTCCGCTACCACAA
CCTGTGGGCGCAGAGGCTGGCCCGCCAGCACCCAGACTGGGAGGACGAGGAGCTGTTCCAGCACGCACGC
AAGAGGTCATCGCCACCTACCAGAACATCGCTGTGTATGAGTGGCTGCCAGCTTCTGCAGAAAACAC
TCCCGGAGTATACAGGATACCGGCCATTTCTGGACCCAGCATCTCCTCAGAGTTCTGGCGGCCTCTGA
GCAGTTCTGTCCACCATGGTGCCCTGGCGTACATGAGAAATGCCAGCTGCCACTTCCAGGGGTC
ATCAATCGGAACTCAAGTGTCTCCAGAGCTCTCCGGTCTGCAACAGCTACTGGAGCCGTGAGCACCCAA
GCCTACAAAGTGTGAAGATGTGGATGCACTGCTGCTGGGCGATGGCTCCAGATCGCAGAGCGAGAGGA
CCATGTGTTGGTTGAAGATGTGCGGATTTCTGGCCTGGGCCACTGAAGTTTTCCCGCACAGACCACCTG
GCCAGTCCCTGCAGCGGGCCGGATCTGGCCTGCCCTTTACACCAAGGCCAGGGCAGCACTGGGCT
TGCTCCCATACCGCTGGCAGGACATCAACCCTGCACTCTCCCGAGCAATGACTGTACTGGAGGC
CACAGTCCCTGTACAACCAGGACTTATCCTGGCTAGAGCTGCTCCCTGGGGACTCCTGGAGAGCCAC



CGGGACCTGGACCTCTGTTTCAGCACCATCGTCTTGAACAATTTGTGCGGCTACGGGATGGTGACCGCT
 ACTGGTTTGAGAACACCAGGAATGGGCTGTTCTCCAAGAAGGAGATTGAAGAAATCCGAAATACCACCT
 GCAGGACGTGCTGGTCGCTGTTATCAACATTGACCCAGTGCTCTGCAGCCCAATGTCTTTGCTGGCAT
 AAAGGAGACCCCTGTCCGAGCCGAGACAGCTCAGCACTGAAGGCCTGCCAGCGCGTGCTCCCTCTGTTG
 TTCGTGACTATTTGAGGGCAGTGGATTGGCTTCGGGGTACCATCGGGACCTCTGTTGCTTCCCTTT
 GGTGAGCCTGCTCAGTGCCTGGATTGTTGCCGGCTCCGGATGAGAAATTTCAAGAGGCTCCAGGGCCAG
 GACCCAGAGCATCGTGTCTGAGAAGCTCGTGGGAGGCATGGAAGCTTTGGAATGGCAAGGCCACAAGG
 AGCCCTGCCGGCCGTGCTTGTGTACTGCAGCCGGGCAGATCCGTGTGGTAGATGGCAGGCTCACCGT
 GCTCCGCACCATCCAGCTGCAGCCTCCACAGAAGGTCAACTTCGTCTGTCCAGCAACCCTGGACGCCGC
 ACTCTGCTGCTCAAGATCCCAAGGAGTATGACCTGGTGTGCTGTTTAACTTGGAGGAAGAGCGGCAGG
 CGCTGGTGGAAAATCTCCGGGGAGCTCTGAAGGAGAGCGGGTTGAGCATCCAGGAGTGGGAGCTGCGGGA
 GCAGGAGCTGATGAGAGCAGCTGTGACACGGGAGCAGCGGAGGCACCTCTGGAGACCTTTTTCAGGCAC
 CTTTTCTCCAGGTGCTGGACATCAACCAGGCCGACGAGGGACCCTGCCCTGGACTCTCCAGAAAGG
 TCGGGAGGCCCTGACCTGTGAGCTGAGCAGGGCCGAGTTTCCGAGTCCCTGGGCTCAAGCCCCAGGA
 CATGTTTGTGGAGTCCATGTTCTCTGGCTGACAAGGATGGCAATGGCTACCTGTCTTCCGAGAGTTC
 CTGGACATCCTGGTGGTCTTCATGAAAGGCTCTCTGAGGAAAAGTCTCGCCTTATGTTCCGCATGTACG
 ACTTTGATGGGAATGGCCTCATTCCAAGGATGAGTTCATCAGGATGCTGAGATCCTTATCGAGATCTC
 CAACAACCTGCCTGCTCAAGGCCAGCTGGCTGAGGTGGTGGAGTCCATGTTCCGGGAGTCCGGATTCCAG
 GACAAGGAGGAACGACATGGGAAGATTTTCACTTCATGCTGCGGGACCAATAGCGAGCTCCGCTTCA
 CGCAGCTCTGTGTCAAAGGGGTGGAGGTGCCTGAAGTCAAGGACCTCTGCCGGCAGGCTCTACAT
 CAGCCAGGATATGATCTGCCCTCTCCAGAGTGAAGTCCCGCTGTTCCCGCAGCGACATTGAGACTGAG
 TTGACACCTCAGAGACTGCAGTGCCTTGGACACAGACCCTCCAGGAGATTCGGCGGAGGTTTGGCA
 AGAAGGTAAAGTCAATCCAGCCCTTGTCTTCACTGAGGGCACCAGAGAGAAGTTCAACGCAGCTGTCT
 CCACCAGACGGTCAACAGTTCAGCGCTTCATTGAGAAGTACCAGCGCCACATCGGCTGGGTGGCGGTG
 TTCTACGCCATCGCTGGGGGCTTTTCTGGAGAGGGCCTACTACTACGCCCTTTCGCCACATCACACGG
 GCATCACGGACACCACCGCTGGGAATCATCCTGTGCGGGGCACAGCAGCCAGCATCTTTTTCATGTT
 CTCCTACATCTTCTCACCATGTGCCGCAACCTCATCACCTTCTGCGAGAAACCTTCTCAACCCTAC
 GTGCCCTTCGACGCCCGCTGGACTTCCATCGCTCATTGCCCTCACCGCCATCGTCTCACAGTCTTAC
 ACAGTGTGGGCCATGTGGTGAATGTGTACCTGTTCTCCATCAGCCCCCTCAGCGTCTCTTGCCTCTT
 TCCTGGCCTCTTCCATGATGATGGGTCTGAGTTCCTCCAGAAAGTATTACTGGTGGTCTTCCAGACCGTA
 CCAGGCCCTCACGGGGTGTGCTGCTCCTGATCCTGGCCATCATGTATGTCTTTGCCTCCACCCTTCC
 GCCGCCGAGTTTCCGGGGCTTCTGGCTGACCCACCACCTCTACATCCTGCTCTATGTCTGCTCATCAT
 CCATGGTAGCTTTGCCCTGATCCAGCTGCCCGTTTCCACATCTTCTTCTGGTCCCAGCAATCATCTAT
 GGGGGCGACAAGCTGGTGAAGCTGAGCCGGAAGAAGGTGGAGATCAGCGTGGTGAAGCGGGAGCTGCTGC
 CCTCAGGAGTGACCCACCTGCGGTTCCAGCGGCCCCAGGGCTTTGAGTACAAGTCAAGGCAGTGGGTGCG
 GATCGCTTGCCTGGCTCTGGGGACCACCGAGTACCACCCCTTCACTGACCTCTGCGCCCCATGAGGAC
 ACGCTTAGCCTGCACATCCGGGCAGCAGGGCCCTGGACCACTCGCCTCAGGGAGATCTACTCAGCCCCGA
 CGGGTACAGATGTGCCAGATACCCAAAGCTGTACCTTGTGACCAATTTGGAGAGGGCCACCAGGAGTG
 GCATAAGTTTGAAGTGTGAGTGTAGTGGGAGGGGCATTGGGGTACCCTTTTGCCTCCATCCGCAAA
 GACCTGGTCTTCAAGTCACTCCGTGACGTGCCAAGTGTCTGTAAGAAGATCTACTTCATCTGGGTGACGC
 GGACCCAGCGTCAAGTTGAGTGGCTGGCTGACATCATCCGAGAGGTGGAGGAGAATGACCACCAGGACCT
 GGTGTCTGTGCACATCTACATCACCCAGCTGGCTGAGAAGTTCGACCTCAGGACCACTATGCTGTACATC
 TGTGAGCGGCACTTCCAGAAGTTCTGAACCGAGTCTATTACAGGCCTGCGCTCCATCACCCACTTTG
 GCCCTCCCCCTTTGAGCCCTTCTCAACTCCCTGCAGGAGGTCCACCCCAAGTCCGGAAGATCGGGT
 GTTTAGCTGTGGCCCCCTGGCATGACCAAGAATGTGAAAAGGCCTGTCAGCTCATCAACAGGCAGGAC
 CGGACTCACTTCTCCACCATTATGAGAACTT

ACGCGTACGCGGCCGCTCGAGCAGAAACTCATCTCAGAAGAGGATCTGGCAGCAAATGATATCCTGGATT
 ACAAGGATGACGACGATGAGGTTTAA

Protein Sequence: >RC223832 representing NM_175940
 Red=Cloning site Green=Tags(s)

MGFCLALAWTLLVGAWTPLGAQNPISWEVQRFDGWYNNLMEHRWGSKGSRLQRLVPASYADGVYQPLGEP
 HLPNPRDLSNTISRGPAGLASLRNRTLGVFFGYHVLSDLVSVETPGCPAEFLNIRIPPGDPMFDPDQRG
 DVVLPFQSRWDPETGRSPSNRPDPANQVTGWLDGSAIYGSSHSWSDALRSF SRGQLASGPDPAFPRDSQ
 NPLLMWAAPDPATGQNGPRGLYAFGAERGNREPFLQALGLLWFRYHNLWAQRLARQHPDWEDEELFQHAR
 KRVIATYQNIAYVEWLP SFLQKTLPEYTYRPFLLDPSISSEFVAASEQFLSTMVPPGVYMRNASCHFQGV
 INRNSSVSRALRVCNSYWSREHPSLQSAEDVDALLLGMASQIAEREDHVLVEDVDRDFWPGPLKFSRTDHL
 ASCLQRGRDLGLPSYTKARAALGLSPITRWQDINPALSRSDTVLEATAALYNQDL SWLELLPGGLLESH
 RDPGPLFSTIVLEQFVRLRDGDYWFENTRGLFSKKEIEEIRNTTLQDVLVAVINIDPSALQPNVVFVWH
 KGDPCPQPRQLSTEGLPARAPSVVRDYFEGSGFGFVGTIGTLCFPLVLLSAWIVARLMRNFKRLQGQ
 DRQSIVSEKLVGGMEALEWQGHKEPCRPVLYLQPGQIRVVDGRLTVLRTIQLQPPQKVNFLSSNRGRR
 TLLLKIPKEYDLVLLFNLEERQALVENLRGALKESGLSIQEWELREQELMRAAVTREQRHLLTEFFRH
 LFSQVLDINQADAGTLPDSSQKVREALTCEL SRAEFAESLGLKPQDMFVESMFSLADKDGNGYLSFREF
 LDILVVF MKGSPEEKSRMLFRMYDFDGNGLISKDEFIRMLRSFIEISNNCLSKAQLAEVVE SMFRESGFGQ
 DKEELTWEDFHFLRDHNSLRFTQLCVKGEVPEVIKDL CRRASYISQDMICPSRVSARCSRSDIETE
 LTPQRLQCPMDTDPPEIRRRFGKVT SFQPLLFTEAHREKFRSCLHQT VQQFKRFIENYRRHIGCVAV
 FYA IAGGLFLERAYYAF AAHHTGITDTRVGIILSRGTAASISFMFSYILLTMCRNLI TFLRETFLNRY
 VPFDAAVDFHRLIASTAI VLVLSVGHVNVYLF SISPLSVLSCLFPGLFHDDGSEFPQKYWWFFQTV
 PGLTGVVLLLILAIMYVFASHHFRRSFRGFWLTHHLYILLYVLLIIHGFSALIQ LPRHFIFFLVPAIIY
 GGDKLVLSRKKVEISVKAELLPSGVTHLRFQRPOGFEYKSGQWVRIACLALGTTEYHPFTLSAPHED
 TLSLHIRAAGPWTRRLREIYSAPTGDRCARYPKLYLDGPFGEHQEWKFEVSVLVGGGIGVTPFASILK
 DLVFKSSVSCQVFCCKIYFIWVTRTQRQFEWLADI IREVEENDHQDLVSVHIYITQLAEKFDLRTMLYI
 CERHFQKVLNRSFLTGLRSITHFGRPPFEPFFNSLQEVHPQVRKIGV FSCGPPGMTKNVEKACQLINRQD
 RTHFSHHYENF

TRTRPLEQKLISEEDLAANDILDYKDDDDKV

Restriction Sites:

SgfI-MluI

Cloning Scheme:



ACCN: NM_175940

ORF Size: 4653 bp

OTI Disclaimer: Due to the inherent nature of this plasmid, standard methods to replicate additional amounts of DNA in E. coli are highly likely to result in mutations and/or rearrangements. Therefore, OriGene does not guarantee the capability to replicate this plasmid DNA. Additional amounts of DNA can be purchased from OriGene with batch-specific, full-sequence verification at a reduced cost. Please contact our customer care team at custsupport@origene.com or by calling 301.340.3188 option 3 for pricing and delivery.

The molecular sequence of this clone aligns with the gene accession number as a point of reference only. However, individual transcript sequences of the same gene can differ through naturally occurring variations (e.g. polymorphisms), each with its own valid existence. This clone is substantially in agreement with the reference, but a complete review of all prevailing variants is recommended prior to use. [More info](#)

OTI Annotation: This clone was engineered to express the complete ORF with an expression tag. Expression varies depending on the nature of the gene.

Components: The ORF clone is ion-exchange column purified and shipped in a 2D barcoded Matrix tube containing 10ug of transfection-ready, dried plasmid DNA (reconstitute with 100 ul of water).

Reconstitution Method:

1. Centrifuge at 5,000xg for 5min.
2. Carefully open the tube and add 100ul of sterile water to dissolve the DNA.
3. Close the tube and incubate for 10 minutes at room temperature.
4. Briefly vortex the tube and then do a quick spin (less than 5000xg) to concentrate the liquid at the bottom.
5. Store the suspended plasmid at -20°C. The DNA is stable for at least one year from date of shipping when stored at -20°C.

RefSeq: [NM_175940.3](#)

RefSeq Size: 5501 bp

RefSeq ORF: 4656 bp

Locus ID: 53905

UniProt ID: [Q9NRD9](#)

Cytogenetics: 15q21.1

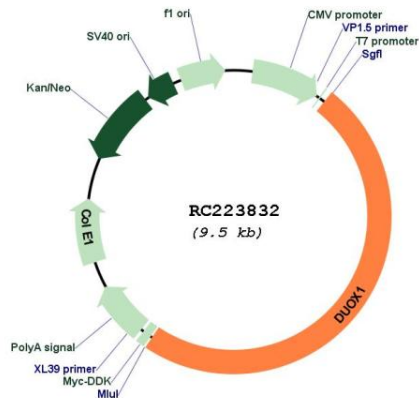
Protein Families: Druggable Genome, Transmembrane

MW: 177.1 kDa

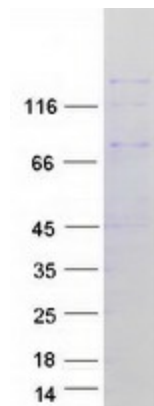
Gene Summary:

The protein encoded by this gene is a glycoprotein and a member of the NADPH oxidase family. The synthesis of thyroid hormone is catalyzed by a protein complex located at the apical membrane of thyroid follicular cells. This complex contains an iodide transporter, thyroperoxidase, and a peroxide generating system that includes proteins encoded by this gene and the similar DUOX2 gene. This protein is known as dual oxidase because it has both a peroxidase homology domain and a gp91phox domain. This protein generates hydrogen peroxide and thereby plays a role in the activity of thyroid peroxidase, lactoperoxidase, and in lactoperoxidase-mediated antimicrobial defense at mucosal surfaces. Two alternatively spliced transcript variants encoding the same protein have been described for this gene. [provided by RefSeq, Jul 2012]

Product images:



Circular map for RC223832



Coomassie blue staining of purified DUOX1 protein (Cat# [TP323832]). The protein was produced from HEK293T cells transfected with DUOX1 cDNA clone (Cat# RC223832) using MegaTran 2.0 (Cat# [TT210002]).