

## Product datasheet for **RC223831**

### **P4HA1 (NM\_000917) Human Tagged ORF Clone**

#### **Product data:**

Product Type:	Expression Plasmids
Product Name:	P4HA1 (NM_000917) Human Tagged ORF Clone
Tag:	Myc-DDK
Symbol:	P4HA1
Synonyms:	P4HA
Mammalian Cell Selection:	Neomycin
Vector:	pCMV6-Entry (PS100001)
E. coli Selection:	Kanamycin (25 ug/mL)



[View online »](#)

**ORF Nucleotide Sequence:**

>RC223831 representing NM\_000917  
 Red=Cloning site Blue=ORF Green=Tags(s)

TTTTGTAATACGACTCACTATAGGGCGGCCGGGAATTCGTCGACTGGATCCGGTACCGAGGAGATCTGCC  
 GCC**GCGATCGCC**

ATGATCTGGTATATATTAATTATAGGAATCTGCTCCCACTCTTTGGCTCATCCAGGCTTTTTACTT  
 CAATTGGTCAGATGACTGATTTGATCCACTGAGAAAGATCTGGTGACTTCTCTGAAAGATTATATTAA  
 GGCAGAAGAGGACAAGTTAGAACAATAAAAAATGGGCAGAGAAGTTAGATCGGCTAACTAGTACAGCG  
 ACAAAGATCCAGAAGGATTTGTTGGGCATCCAGTAAATGCATTCAAATTAATGAAACGCTGAATACTG  
 AGTGGAGTGAGTTGGAGAATCTGGTCCTAAGGATATGTCAGATGGCTTTATCTCTAACCTAACCTTCA  
 GAGACGACTTTCTAATGATGAAGATCAGGTTGGGCAGCCAAAGCTCTGTTACGCTCCAGGATACC  
 TACAATTTGGATACAGATACCATCTCAAAGGTAATCTCCAGGAGTGAAACACAATCTTTTCTAACGG  
 CTGAGGACTGCTTTGAGTTGGGCAAAGTGGCCTATACAGAAGCAGATTATTACCATACGGAAGTGGAT  
 GGAACAAGCCCTAAGGCAACTGGATGAAGGCGAGATTTCTACCATAGATAAAGTCTCTGTTCTAGATTAT  
 TTGAGCTATGCGGTATATCAGCAGGGAGACCTGGATAAGGCACTTTTGCTCACAAGAAGCTTCTTGAAC  
 TAGATCTGAACATCAGAGAGCTAATGGTAACTTAAAAATTTTGTAGTATATAATGGCTAAAGAAAAAGA  
 TGTCAATAAGTCTGCTTCAGATGACCAATCTGATCAGAAAACCTACACCAAGAAAAAGGGGTTGCTGTG  
 GATTACCTGCCAGAGAGACAGAAGTACGAAATGCTGTGCCGTGGGGAGGGTATCAAAATGACCCCTCGGA  
 GACAGAAAAAATCTTTTGCCGCTACCATGATGGAACCGTAATCCTAAATTTATCTGGCTCCAGCTAA  
 ACAGGAGGATGAATGGGACAAGCCTCGTATTATCGCTCCATGATATTATTTCTGATGCAGAAATTGAA  
 ATCGTCAAAGACCTAGCAAAACCAAGGCTGAGGCGAGCCACCATTCAAACCAATAACAGGAGACTTGG  
 AGACGGTACATTACAGAATTAGCAAAAGTGCCTGGCTCTCTGGCTATGAAAATCCTGTGGTGTCTCGAAT  
 TAATATGAGAATACAAGATCTAACAGGACTAGATGTTTCCACAGCAGAGGAATTACAGGTAGCAAATTA  
 GGAGTTGGAGGACAGTATGAACCCATTTTGTACTTGCACGAAAAGATGAGCCAGATGCTTTCAAAGAGC  
 TGGGGACAGGAAATAGAATTGCTACATGGCTGTTTATATGAGTGATGTGTCTGCAGGAGGAGCCACTGT  
 TTTTCTGAAGTTGGAGCTAGTGTGGCCAAAAAGGAACTGCTGTTTCTGGTATAATCTGTTTGCC  
 AGTGGAGAAGGAGATTATAGTACACGGCATGCAGCCTGTCCAGTGTAGTTGGCAACAAATGGGTATCCA  
 AATAATGGCTCCATGAACGTGGACAAGAATTTCAAGACCTTGTACGTTGTCAGAATTGGAA

**ACGCGT**ACGCGGCCGCTCGAGCAGAAACTCATCTCAGAAGAGGATCTGGCAGCAAATGATATCTGGATT  
 ACAAGGATGACGACGATAAGGTTTAA

**Protein Sequence:**

>RC223831 representing NM\_000917  
 Red=Cloning site Green=Tags(s)

MIWYILIIIGILLPQSLAHPGFFTSIQMTDLIHTEKDLVTSKDYIKAEEKLEQIKKWAELDRLTSTA  
 TKDPEGFVGHVPVNAFKLMKRLNTEWSELENLVLKDMSDGFISNLTIQRYFPNDEDQVGAALKLLRLQDT  
 YNLDDTISKGNLPGVKHKSFLTAEDCFELGKVAYTEADYYHTELWMEQALRQLDEGEISTIDKVSVDY  
 LSYAVYQQGDLKALLLTKKLELDPEHQRANGNLKYFEYIMAKEKDVNKSASDDQSDQKTPKKKGAV  
 DYLPERQKYEMLCRGEIKMTPRRQKFLCRYHDGNRNPKFI LAPAKQEDEWDKPRIIRFHDIISDAEIE  
 IVKDLAKPRLRRATISNPITGDLETVHYRISKSAWLSGYENPVVSRINMRIQDLTGLDVSTAEELQVANY  
 GVGQYEPHFDFAKDEPDAFKELGTGNRIATWLFYMSDVSAGGATVFPEVGASVWPKKGTAVFWYNLFA  
 SGEGDYSTRHAACPVLVGNKWSNKWLHERGQEFRRPCTLSELE

**TRTRPLEQKLI**SEEDLAANDILDYKDDDDKV

**Chromatograms:**

[https://cdn.origene.com/chromatograms/mk6158\\_a03.zip](https://cdn.origene.com/chromatograms/mk6158_a03.zip)

**Restriction Sites:**

Sgfl-MluI



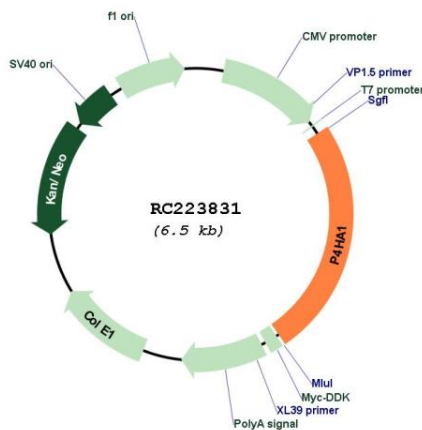
**Protein Families:** Druggable Genome, P450

**Protein Pathways:** Arginine and proline metabolism, Metabolic pathways

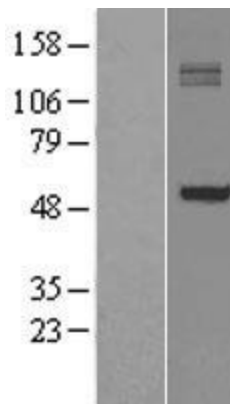
**MW:** 61.05 kDa

**Gene Summary:** This gene encodes a component of prolyl 4-hydroxylase, a key enzyme in collagen synthesis composed of two identical alpha subunits and two beta subunits. The encoded protein is one of several different types of alpha subunits and provides the major part of the catalytic site of the active enzyme. In collagen and related proteins, prolyl 4-hydroxylase catalyzes the formation of 4-hydroxyproline that is essential to the proper three-dimensional folding of newly synthesized procollagen chains. Alternatively spliced transcript variants encoding different isoforms have been described. [provided by RefSeq, Jul 2008]

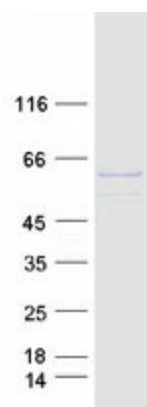
**Product images:**



Circular map for RC223831



Western blot validation of overexpression lysate (Cat# [LY400334]) using anti-DDK antibody (Cat# [TA50011-100]). Left: Cell lysates from untransfected HEK293T cells; Right: Cell lysates from HEK293T cells transfected with RC223831 using transfection reagent MegaTran 2.0 (Cat# [TT210002]).



Coomassie blue staining of purified P4HA1 protein (Cat# [TP323831]). The protein was produced from HEK293T cells transfected with P4HA1 cDNA clone (Cat# RC223831) using MegaTran 2.0 (Cat# [TT210002]).