

Product datasheet for **RC223830**

TGIF (TGIF1) (NM_173210) Human Tagged ORF Clone

Product data:

Product Type: Expression Plasmids
Product Name: TGIF (TGIF1) (NM_173210) Human Tagged ORF Clone
Tag: Myc-DDK
Symbol: TGIF
Synonyms: HPE4; TGIF
Mammalian Cell Selection: Neomycin
Vector: pCMV6-Entry (PS100001)
E. coli Selection: Kanamycin (25 ug/mL)
ORF Nucleotide Sequence: >RC223830 ORF sequence
 Red=Cloning site Blue=ORF Green=Tags(s)

TTTTGTAATACGACTCACTATAGGGCGGCCGGAATTCGTCGACTGGATCCGGTACCGAGGAGATCTGCC
 GCC**CGATCGCC**

ATGGTTCTAGCGCAGAGCCGGGTGTCTGCCGGGTGGGCTCCCCGATTGTTCCGGCTCCGGCGGGGGCG
 GCTCTGATTCTTTCCATGGCCCGCTCCACCCCGGAATCCGCAGTGTCTTTCCACGGCTTTTCT
 GGCGTCCCCCGACTCTCCCGCGCACTTTGGCTACCTCCCCAGCGCCGTGGTCTCCCTGGCGACC
 CCCTCTGCGCTCCTGGGTCTCTCGCCCCCTCTCCACCGCGCGCTGCCACAGCCGCTGCC
 TCTCCCAGGAGCTGGGGACCAAGGCTGGGCCCGCGGCATCGGTGGAACTCCGCGTCCCATC
 CCAGGGCGCACAGGTCCAGTCTCGGCGCCGACTCCTGGAAACAATGAAAGGTATTGTTGCAGCATCT
 GGCAGTGAGACTGAGGATGAGGACAGCATGGACATTCCTTGGACCTTCTTTCATCCGCTGGCTCAGGCA
 AGAGAAGGAGAAGGGGAACCTACCCAAGGAGTCTGTGCAGATTCTCGGGATTGGCTGTATGAGCACCG
 TTACAATGCCTATCCTTCAGAGCAAGAAAAAGCGTTGCTGTCCCAGCAAACACACCTGTCTACGCTACAG
 GTCTGTAAGTGGTTCATCAACGCCCGCCGAGGCTCCTCCCTGACATGCTGAGAAAGGATGGCAAAGATC
 CAAATCAGTTCACAATTTCCCGCGTGGGGCAAGATTCTGAAACGAGCTCTGTGGAGTCCGTGATGGG
 CATCAAAAACCTCATGCCAGCTCTAGAGGAGACCCCATTCATTCTGTACAGCTGGGCCAAACCAACC
 CTAGGGAGGCCACTGTCTCCTAAGCCGTCATCCCCGGGATCAGTTTGGCTCGTCCATCAGTGATCTGCC
 ATACCACTGTGACTGCATTGAAAGATGTCCCTTCTCTCTGCCAGTCCGGTGGTGGGACAAAACAC
 AGATATACAGCAGATAGCGGCCAAAAAATTACAGACACCTCTCTCATGTACCCAGAGGACACTGTAA
 TCTGGACCAAGTACGAATACACAGAGTGGTCTTTTCAACACTCTCCCCACTCCACCGGACCTCAACC
 AGGACTTCAGTGGATTTTCAGTCTAGTGGATGTTGCACTCAAACGGGCTGCAGAGATGGAGCTTCAGGC
 AAAACTTACAGCT

ACGCGTACGCGGCCGCTCGAGCAGAAACTCATCTCAGAAGAGGATCTGGCAGCAATGATATCTGGATT
 ACAAGGATGACGACGATAAGGTTTAA



Protein Sequence: >RC223830 protein sequence
Red=Cloning site Green=Tags(s)

```
MVLAQSRVSAGVGSFHCSGSGGGGSDSFPWPASHPGNPQCSFSTAFASPRLSRGTLAYLPPAPWSSLAT
PSALLGSSCAPPPIPARCPQPRALSQELGTKAGPRRPHRWELPRSPSQAQGPAPRRRLLKTMKGIWAAS
GSETEDEDSMDIPLDLSSAGSGKRRRRGNLPKESVQILRDWL YEHRYNAYPSEQEKALLSQQTHLSTLQ
VCNWFINARRRLLPDMLRKDGKDPNQFTISRGGAKISETSSVESVMGIKNFMPALEETPFHSCTAGPNPT
LGRPLSPKPSPPGVLARPSVICHHTTALKDVPFSLCQSVGVGQNTDIQQIAAKNFDTSLMYPEDTCK
SGPSTNTQSGLFNTPPPDPDLNQDFSGFQLLVDVALKRAAEMELQAKLTA
```

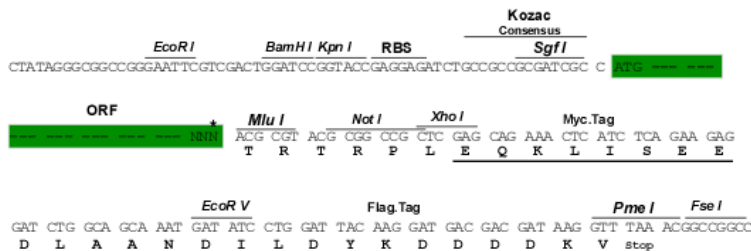
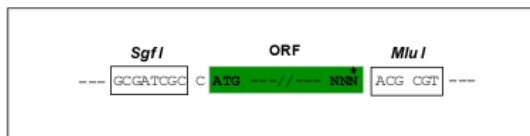
TRTRPLEQKLISEEDLAANDILDYKDDDDKV

Chromatograms: https://cdn.origene.com/chromatograms/mk6322_h07.zip

Restriction Sites: SgfI-MluI

Cloning Scheme:

Cloning sites used for ORF Shuttling:



* The last codon before the Stop codon of the ORF

ACCN: NM_173210

ORF Size: 1206 bp

OTI Disclaimer: The molecular sequence of this clone aligns with the gene accession number as a point of reference only. However, individual transcript sequences of the same gene can differ through naturally occurring variations (e.g. polymorphisms), each with its own valid existence. This clone is substantially in agreement with the reference, but a complete review of all prevailing variants is recommended prior to use. [More info](#)

OTI Annotation: This clone was engineered to express the complete ORF with an expression tag. Expression varies depending on the nature of the gene.

Components: The ORF clone is ion-exchange column purified and shipped in a 2D barcoded Matrix tube containing 10ug of transfection-ready, dried plasmid DNA (reconstitute with 100 ul of water).

Reconstitution Method:

1. Centrifuge at 5,000xg for 5min.
2. Carefully open the tube and add 100ul of sterile water to dissolve the DNA.
3. Close the tube and incubate for 10 minutes at room temperature.
4. Briefly vortex the tube and then do a quick spin (less than 5000xg) to concentrate the liquid at the bottom.
5. Store the suspended plasmid at -20°C. The DNA is stable for at least one year from date of shipping when stored at -20°C.

RefSeq: [NM_173210.1](#), [NM_173210.2](#), [NP_775302.1](#)

RefSeq Size: 1657 bp

RefSeq ORF: 759 bp

Locus ID: 7050

UniProt ID: [Q15583](#)

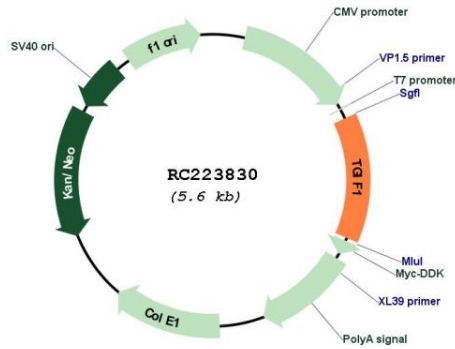
Cytogenetics: 18p11.31

Protein Families: Druggable Genome, Stem cell - Pluripotency, Stem cell relevant signaling - TGFb/BMP signaling pathway, Transcription Factors

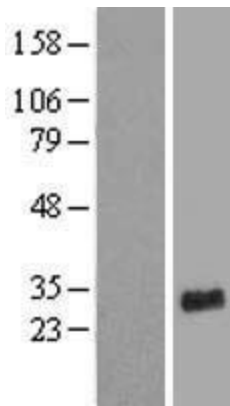
MW: 43 kDa

Gene Summary: The protein encoded by this gene is a member of the three-amino acid loop extension (TALE) superclass of atypical homeodomains. TALE homeobox proteins are highly conserved transcription regulators. This particular homeodomain binds to a previously characterized retinoid X receptor responsive element from the cellular retinol-binding protein II promoter. In addition to its role in inhibiting 9-cis-retinoic acid-dependent RXR alpha transcription activation of the retinoic acid responsive element, the protein is an active transcriptional co-repressor of SMAD2 and may participate in the transmission of nuclear signals during development and in the adult. Mutations in this gene are associated with holoprosencephaly type 4, which is a structural anomaly of the brain. Alternative splicing has been observed at this locus and multiple splice variants encoding distinct isoforms are described. [provided by RefSeq, Jul 2013]

Product images:



Circular map for RC223830



Western blot validation of overexpression lysate (Cat# [LY406655]) using anti-DDK antibody (Cat# [TA50011-100]). Left: Cell lysates from untransfected HEK293T cells; Right: Cell lysates from HEK293T cells transfected with RC223830 using transfection reagent MegaTran 2.0 (Cat# [TT210002]).