

## Product datasheet for **RC223829**

### **FUT4 (NM\_002033) Human Tagged ORF Clone**

#### **Product data:**

Product Type:	Expression Plasmids
Product Name:	FUT4 (NM_002033) Human Tagged ORF Clone
Tag:	Myc-DDK
Symbol:	FUT4
Synonyms:	CD15; ELFT; FCT3A; FUC-TIV; FUTIV; LeX; SSEA-1
Mammalian Cell Selection:	Neomycin
Vector:	pCMV6-Entry (PS100001)
E. coli Selection:	Kanamycin (25 ug/mL)



[View online »](#)

**ORF Nucleotide Sequence:**

>RC223829 representing NM\_002033  
 Red=Cloning site Blue=ORF Green=Tags(s)

TTTTGTAATACGACTCACTATAGGGCGGCCGGGAATTCGTCGACTGGATCCGGTACCGAGGAGATCTGCC  
 GCC**CGGATCGCC**

ATGAGGCGCTTGTGGGGCGGGCCCGGAAGCCCTCGGGCGGGGTGGGAGAAGGAGTGGGCGGAGCGC  
 CGCAGGAGGCTCCCGGGCCTGTCGGGCGGCTGGGCCCGGGCGCAGTGAAGAAAGGACGGGCGGT  
 GCCCGTTGGGCGTCTGGCCAGCTCACCTTGCCCTGGCGGCTCGCCCGCCCGGCACTTGGGAGGAGCA  
 GGGCAGGGCCCGCGCCTTTGCATTCTGGGACCGCCCTTCCATTCCCGGGCCAGCGGCGAGCGGCAGC  
 GACGGCTGGAGCCGACGTACAGCATGAGAGCCGGTGGCGCTCTCCACGCCTGCGGACGCGTGGCGAGC  
 GGAGGCAGCGCTGCCTGTTGCGGCCATGGGGCACCGTGGGGCTCGCCGACGGCGGCGGGCGGGCGG  
 CGCGGGTGGCGCCGAGCCGGGGCTGCCATGGACCGTGTGTGCTGGCGGCCCGGGCTTGACGTGTA  
 CGGCGCTGATCACCTACGCTTGTGGGGCAGCTGCCCGCGTGCCTGGGCGTGCCTAACCCCGTCCGG  
 ACCGGTGGGCGTGTGCTGTTGGTGGGAGCCCTTCGGGGGCGCGATAGCGCCCGAGGCCCGCCCTGAC  
 TGCCGGCTGCGCTTCAACATCAGCGGCTGCCGCCTGTCAACGACCGCGGCTCTACGGAGAGGCTCAGG  
 CCGTGCTTTCCACCACCGGACCTCGTGAAGGGCCCCCGACTGGCCCCCGCCCTGGGCGATCCAGGC  
 GCACACTGCCGAGGAGGTGGATCTGCGCGTGTGGACTACGAGGAGGACGCGGCGGCGCAGAAGCCCTG  
 GCGACCTCCAGCCCCAGGCCCGGGCCAGCGCTGGGTTTGGATGAACCTCGAGTCGCCCTCGCACTCCC  
 CGGGGCTGCGAAGCTGGCAAGTAACTCTTCACTGGACGCTCTCTACCGGGCGGACTCGGACGTCTT  
 TGTGCCTATGGTACCTTACCCAGAAGCCACCCGGCGACCCGCCCTCAGGCTGGCCCCGCCACTG  
 TCCAGAAACAGGGGCTGGTGGCATGGTGGTGGGACTGGGACGAGCGCCAGGCCCGGGTCCGCTACT  
 ACCACCACTGAGCCAACATGTGACCGTGGACGTGTTGCGCCGGGCGGGCGGGCGGGCGGCTGCCGA  
 AATTGGGCTCTGCACACAGTGGCCCGCTACAAGTTCTACCTGGCTTTCGAGAAGTTCGACGACCTGGAT  
 TATATACCGAGAAGCTCTGGCGCAACGCTTGTGCTGCTGGGCGGTGCCGGTGGTGTGGGCCAGACC  
 GTGCCAATACGAGCGCTTTGTGCCCGCGGCGCCTTCCACGTGGACGACTTCCAAGTGCCTCCTC  
 CCTGGCCTCGTACCTGCTTTTCTCGACCGCAACCCCGCGGTCTATCGCCGCTACTTCCACTGGCGCGG  
 AGCTACGCTGTCCACATCACCTCTTCTGGGACGAGCCTTGGTCCGGGTGTGCCAGGCTGTACAGAGG  
 CTGGGGACCGGCCAAGAGCATAACGGAAGTGGCCAGCTGGTTCGAGCGG

AG**CGGACCG**ACGCGTACGCGGCCGCTCGAGCAGAACTCATCTCAGAAGAGGATCTGGCAGCAAATGATATCC  
 TGGATTACAAGGATGACGACGATAAGGTTTAA

**Protein Sequence:**

>RC223829 representing NM\_002033  
 Red=Cloning site Green=Tags(s)

MRRLLWGAARKPSGAGWEKEWAEAPQEAPGAWSGRLGPRSGRKGRAVPGWASWPAHLALAAARPARHLGGA  
 GQGRPLHSGTAPFHSRASGERQRRLQHESSRCSSTPADAWRAEALPVRAMGAPWGSPTAAAGGR  
 RGWRRRGLPWTVCVLAAGLTCTALITYACWQQLPPLPWASPTPSRPVGVLLWWEFFGGRDSAPRPPPD  
 CRLRFNISGCRLLTDRASYGEAQLVHHRDLVKGPPDWPPWGIQAHTAEVDLRLVDYEEAAAAAAL  
 ATSSRPPGQRWVWMNFESPSHSPGLRSLANLFWNTLSYRADSDFVVPYGYLYPRSHPGDPPSGLAPPL  
 SRKQGLVAWVSHWDERQARVRYHQLSQHVTVDVFGGGGQPVPEIGLLHTVARYKFLAFENSQHL  
 YITEKLWRNALLAGAVPVLGPDRANYERFVPRGAFIHVDDFPSASSLASYLFLDRNPVYRRYFHWRR  
 SYAVHITSFWDEPWCRVCQAVQVRAGDRPKSIRNLAASFER

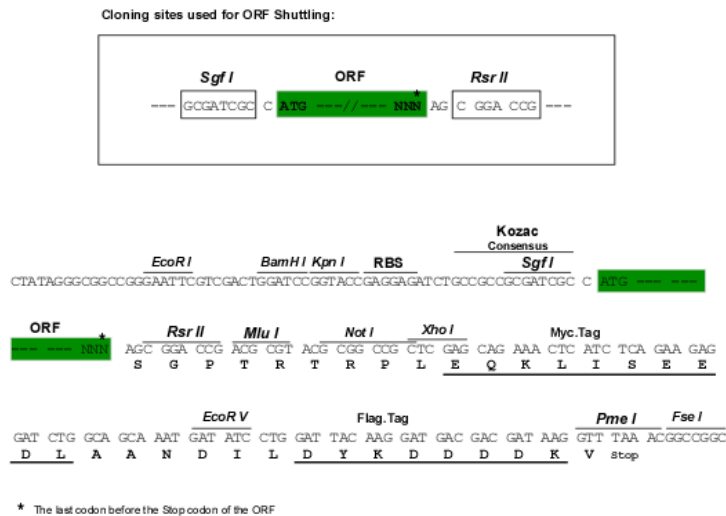
**SGP**TRRRLEQKLISEEDLAANDILDYKDDDDKV

**Chromatograms:**

[https://cdn.origene.com/chromatograms/mg3815\\_h05.zip](https://cdn.origene.com/chromatograms/mg3815_h05.zip)

**Restriction Sites:**

Sgfl-RsrII

**Cloning Scheme:**


**ACCN:** NM\_002033

**ORF Size:** 1590 bp

**OTI Disclaimer:** Due to the inherent nature of this plasmid, standard methods to replicate additional amounts of DNA in E. coli are highly likely to result in mutations and/or rearrangements. Therefore, OriGene does not guarantee the capability to replicate this plasmid DNA. Additional amounts of DNA can be purchased from OriGene with batch-specific, full-sequence verification at a reduced cost. Please contact our customer care team at [custsupport@origene.com](mailto:custsupport@origene.com) or by calling 301.340.3188 option 3 for pricing and delivery.

The molecular sequence of this clone aligns with the gene accession number as a point of reference only. However, individual transcript sequences of the same gene can differ through naturally occurring variations (e.g. polymorphisms), each with its own valid existence. This clone is substantially in agreement with the reference, but a complete review of all prevailing variants is recommended prior to use. [More info](#)

**OTI Annotation:** This clone was engineered to express the complete ORF with an expression tag. Expression varies depending on the nature of the gene.

**Components:** The ORF clone is ion-exchange column purified and shipped in a 2D barcoded Matrix tube containing 10ug of transfection-ready, dried plasmid DNA (reconstitute with 100 ul of water).

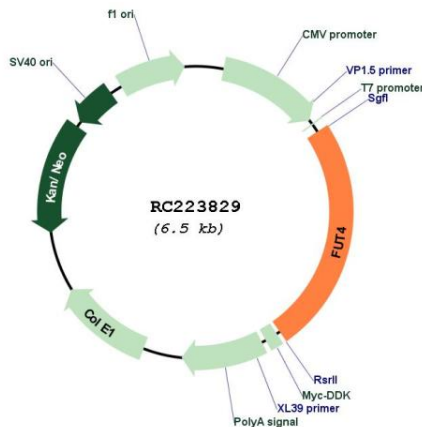
**Reconstitution Method:**

1. Centrifuge at 5,000xg for 5min.
2. Carefully open the tube and add 100ul of sterile water to dissolve the DNA.
3. Close the tube and incubate for 10 minutes at room temperature.
4. Briefly vortex the tube and then do a quick spin (less than 5000xg) to concentrate the liquid at the bottom.
5. Store the suspended plasmid at -20°C. The DNA is stable for at least one year from date of shipping when stored at -20°C.

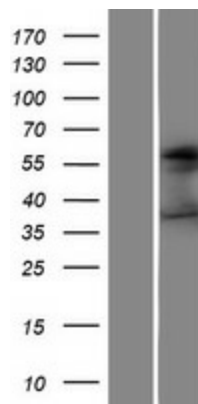
**RefSeq:** [NM\\_002033.3](#)

RefSeq Size:	5937 bp
RefSeq ORF:	1593 bp
Locus ID:	2526
UniProt ID:	<a href="#">P22083</a>
Cytogenetics:	11q21
Protein Families:	Transmembrane
Protein Pathways:	Glycosphingolipid biosynthesis - lacto and neolacto series, Metabolic pathways
MW:	58.9 kDa
Gene Summary:	The product of this gene transfers fucose to N-acetyllactosamine polysaccharides to generate fucosylated carbohydrate structures. It catalyzes the synthesis of the non-sialylated antigen, Lewis x (CD15). [provided by RefSeq, Jan 2009]

### Product images:



Circular map for RC223829



Western blot validation of overexpression lysate (Cat# [LY419574]) using anti-DDK antibody (Cat# [TA50011-100]). Left: Cell lysates from untransfected HEK293T cells; Right: Cell lysates from HEK293T cells transfected with RC223829 using transfection reagent MegaTran 2.0 (Cat# [TT210002]).