

Product datasheet for **RC223826**

CUX1 (NM_001913) Human Tagged ORF Clone

Product data:

Product Type:	Expression Plasmids
Product Name:	CUX1 (NM_001913) Human Tagged ORF Clone
Tag:	Myc-DDK
Symbol:	CUX1
Synonyms:	CASP; CDP; CDP/Cut; CDP1; Clox; COY1; CUTL1; CUX; Cux/CDP; GDDI; GOLIM6; Nbla10317; p75; p100; p110; p200
Mammalian Cell Selection:	Neomycin
Vector:	pCMV6-Entry (PS100001)
E. coli Selection:	Kanamycin (25 ug/mL)



[View online »](#)

ORF Nucleotide
Sequence:

>RC223826 representing NM_001913
Red=Cloning site Blue=ORF Green=Tags(s)

TTTTGTAATACGACTCACTATAGGGCGGCCGGAATTCGTCGACTGGATCCGGTACCGAGGAGATCTGCC
GCC**CGGATCGCC**

ATGGCGCCAATGTGGGATCGATGTTTCAATATTGGAAGCGCTTTGATTTACAGCAGCTGCAGAGAGAAC
TCGATGCCACCGCAACGGTATTGGCGAACCGGCAGGATGAAAGTGAGCAGTCCAGAAAGCGCTTATCGA
ACAGAGCCGGGAGTTCAAGAAGAACAACCTCCAGAGGATTTGCGCAAGCAGGTAGCGCCGCTGCTGAAGAGT
TTCCAAGGAGAGATTGATGCACTGAGTAAAAGAAGCAAGGAAGCTGAAGCAGCTTTCTTGAATGTCTACA
AAAGATTGATTGACGTCCAGATCCCGTACCAGCTTTGGATCTCGGACAGCAACTCCAGCTCAAAGTGCA
GCGCTGCACGATATTGAAACAGAGAACCAGAACTTAGGGAACTCTGGAAGAATAACAACAGGAATTT
GCTGAAGTAAAAATCAAGAGGTTACGATAAAAGCACTTAAAGAGAAAATCCGAGAATATGAACAGACAC
TGAAGAACCAAGCCGAAACCATAGCTCTTGAGAAGGAACAGAAGTTACAGAATGACTTTGCAGAAAAGGA
GAGAAAGCTGCAGGAGACACAGATGTCCACCACCTCAAAGCTGGAGGAAGCTGAGCATAAGTTTCAGAGC
CTACAAAACAGCCCTGGAAAAAATCGAACAGAATTATTTGACCTGAAAACCAAATACGATGAAGAACTA
CTGCAAAGGCCGACGAGATTGAAATGATCATGACGGACCTTAAAAGGGCAAACAGAGGGCAGAGGTGGC
TCAGAGAGAGGGCAGACCTTAAGGGAACAGCTCTCATCGGCCAATCACTCCCTCCAGCTGGCCTCACAG
ATCCAGAAGGCACCAGACGTGGAGCAGGCCATAGAGGTGCTGACCCGCTCCAGCCTAGAAGTTGAGTTGG
CCGCCAAGGAGCGGGAGATCGCACAGCTGGTGGAGGACGTGCAGAGACTCCAGGCCAGCCTACCAAAGCT
GCGGGAGAATTCGGCCAGCCAGATCTCACAGCTTGAGCAGCAGCTGAGCGCAAAAACAGCACACTCAA
CAACTGGAAGAAAACTCAAAGGCCAGGCTGACTATGAAGAGGTGAAGAAAGAGCTGAACATTCTGAAGT
CCATGGAGTTTGACCCGTCGAGGGCGCTGGGACACAGGATGCGGCCAAGCCCTGGAGGTGCTGTTGCT
GGAGAAGAACCCTCGCTGCAGTCCGAGAACCGCGCTGCGCATCTCCAACAGCGACCTGAGCGGACGC
TGTGCAGAGCTGCAGGTCCGTATCACTGAGGCTGTGGCCACAGCCACTGAGCAGAGAGAGCTGATCGCCC
GCCTGGAGCAGGACCTGAGCATCATTAGTCCATCCAGCGGCCCGATGCCGAGGGTGCCGCTGAGCACCG
CCTGGAGAAGATCCCAGAGCCCATCAAAGAGGCCACTGCCCTATTCTACGGACCTGCAGCACCAGCCAGC
GGTGCCCTCCCAGAGGGCCAGGTGGATTCACTGCTTTCCATCATCTCCAGCCAGAGGGAGCGCTTCCGTG
CCCGAACAGGAGCTTGAGGCCGAGAACCGCCTGGCCCAGCACACCCTCCAGGCCCTGCAGAGTGAGCT
GGACAGCCTGCGCGCCGACAACATCAAGCTCTTTGAGAAGATCAAGTTCTGCAGAGCTACCTGGCCGG
GGCAGCGCAGTGATGACACGGAGCTGCGGTACTCGTCCAGTACGAGGAGCGCCTGGACCCCTTCTCCT
CCTTCAGCAAGCGGGAGCGGCAGAGGAAGTACCTGAGCTTGAGTCCCTGGGACAAGGCCACCCTCAGCAT
GGGGCGTCTGTTCTCTCCAACAAGATGGCGCGCACCATCGGCTTCTTCTACACACTGTTCTGCACTGC
CTGGTCTTCTGGTGCTCTACAAGCTGGCATGGAGCGAGAGCATGGAGAGGGACTGTGCCACCTTCTGCG
CCAAGAAGTTCGCTGACCACCTGCACAAGTTCACGAGAATGACAACGGGGCTGCGGCTGGTGACTTGTG
GCAG

ACGCGTACGCGGCCGCTCGAGCAGAACTCATCTCAGAAGAGGATCTGGCAGCAAATGATATCCTGGATT
ACAAGGATGACGACGATAAGGTTTAA

Protein Sequence: >RC223826 representing NM_001913
 Red=Cloning site Green=Tags(s)

```

MAANVGSMFQYWKRFDLQQLQRELDATATVLANRQDESEQSRKRLIEQSREFKKNTPEDLRKQVAPLLKS
FQGEIDALSKRSKEAAEAFNLVYKRLIDVPDPVPALDLGQQLQLKVQRLHDIETENQKLRETL EEYNKEF
AEVKNQEVTIKALKEKIREYEQT LKNQAE TIALEKEQKLQNDFAEKERKLQETQMSTTSKLEEAHKVQS
LQTALEKTRTELFDLKT KYDEETAKADEIEMIMTDLERANQRAEVAQREAE TLRQLSSANHSLQLASQ
IQKAPDVEQAIEVLTRSSLEVELAAKEREIAQLVEDVQRLQASLTKLRENSASQISQLEQQLSAKNSTLK
QLEEKLGQADYEEVKELNILKSMEFAPSEGAGTQDAAKPLEVLLLEKNRSLQSENAALRISNSDL SGR
CAELQVRITEAVATATEQRELIARLEQDLSIIQSIQRPDAEGAAEHRLEKIPEPIKEATALFYGPAAPAS
GALPEGQVDSLLSISSQRERFRARNQELEAENRLAQHTLQALQSELD SLRADNIKLFKIKFLQSYPGR
GSGSDDELRYSSQYEERLDPFSSFSKRERQRKYLSPWDKATLSMGRVLVSNKMARTIGFFYTLFLHC
LVFLVL YKLAWSESMERDCATFCAKKFADHLHKFHENDNGAAAGDLWQ
  
```

TRTRPLEQKLISEEDLAANDILDYKDDDDKV

Chromatograms: https://cdn.origene.com/chromatograms/mg2919_f01.zip

Restriction Sites: SgfI-MluI

Cloning Scheme:



ACCN: NM_001913

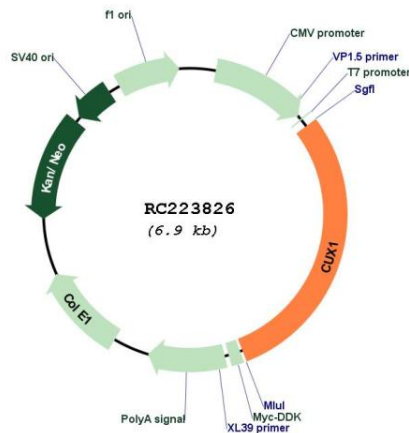
ORF Size: 2034 bp

OTI Disclaimer: The molecular sequence of this clone aligns with the gene accession number as a point of reference only. However, individual transcript sequences of the same gene can differ through naturally occurring variations (e.g. polymorphisms), each with its own valid existence. This clone is substantially in agreement with the reference, but a complete review of all prevailing variants is recommended prior to use. [More info](#)

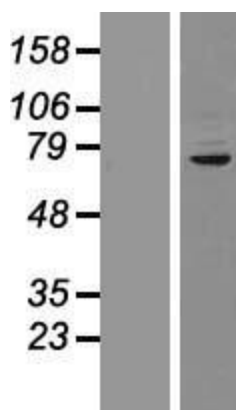
OTI Annotation: This clone was engineered to express the complete ORF with an expression tag. Expression varies depending on the nature of the gene.

- Components:** The ORF clone is ion-exchange column purified and shipped in a 2D barcoded Matrix tube containing 10ug of transfection-ready, dried plasmid DNA (reconstitute with 100 ul of water).
- Reconstitution Method:**
1. Centrifuge at 5,000xg for 5min.
 2. Carefully open the tube and add 100ul of sterile water to dissolve the DNA.
 3. Close the tube and incubate for 10 minutes at room temperature.
 4. Briefly vortex the tube and then do a quick spin (less than 5000xg) to concentrate the liquid at the bottom.
 5. Store the suspended plasmid at -20°C. The DNA is stable for at least one year from date of shipping when stored at -20°C.
- RefSeq:** [NM_001913.5](#)
- RefSeq Size:** 2942 bp
- RefSeq ORF:** 2037 bp
- Locus ID:** 1523
- UniProt ID:** [Q13948](#)
- Cytogenetics:** 7q22.1
- Protein Families:** Transcription Factors, Transmembrane
- MW:** 77.3 kDa
- Gene Summary:** The protein encoded by this gene is a member of the homeodomain family of DNA binding proteins. It may regulate gene expression, morphogenesis, and differentiation and it may also play a role in the cell cycle progression. Several alternatively spliced transcript variants encoding different isoforms have been identified.[provided by RefSeq, Feb 2011]

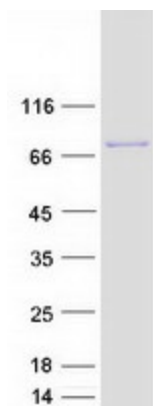
Product images:



Circular map for RC223826



Western blot validation of overexpression lysate (Cat# [LY419649]) using anti-DDK antibody (Cat# [TA50011-100]). Left: Cell lysates from untransfected HEK293T cells; Right: Cell lysates from HEK293T cells transfected with RC223826 using transfection reagent MegaTran 2.0 (Cat# [TT210002]).



Coomassie blue staining of purified CUX1 protein (Cat# [TP323826]). The protein was produced from HEK293T cells transfected with CUX1 cDNA clone (Cat# RC223826) using MegaTran 2.0 (Cat# [TT210002]).