

Product datasheet for **RC223825**

CD36 (NM_001001547) Human Tagged ORF Clone

Product data:

Product Type:	Expression Plasmids
Product Name:	CD36 (NM_001001547) Human Tagged ORF Clone
Tag:	Myc-DDK
Symbol:	CD36
Synonyms:	BDPLT10; CHDS7; FAT; GP3B; GP4; GPIV; PASIV; SCARB3
Mammalian Cell Selection:	Neomycin
Vector:	pCMV6-Entry (PS100001)
E. coli Selection:	Kanamycin (25 ug/mL)



[View online »](#)

ORF Nucleotide Sequence:

>RC223825 representing NM_001001547
 Red=Cloning site Blue=ORF Green=Tags(s)

TTTTGTAATACGACTCACTATAGGGCGGCCGGAATTCGTCGACTGGATCCGGTACCGAGGAGATCTGCC
 GCC**CGCATCGCC**

ATGGGCTGTGACCGAACTGTGGGCTCATCGTGGGGCTGTCATTGGTGTCTCCTGGCTGTGTTTGGAG
 GTATTCTAATGCCAGTTGGAGACCTGCTTATCCAGAAGACAATAAAAAGCAAGTTGTCCTCGAAGAAGG
 TACAATTGCTTTTAAAAATTGGGTTAAAAACAGGCACAGAAGTTTACAGACAGTTTGGATCTTTGATGTG
 CAAAATCCACAGGAAGTGATGATGAACAGCAGCAACATTCAAGTTAAGCAAAGAGGTTCTTATACGTACA
 GAGTTCGTTTTCTAGCCAAGGAAAATGTAACCCAGGACGCTGAGGACAACACAGTCTCTTTCCTGCAGCC
 CAATGGTGCCATCTCGAACCTTCACTATCAGTTGGAACAGAGGCTGACAACTTCACAGTTCTCAATCTG
 GCTGTGGCAGCTGCATCCATATCTATCAAAATCAATTTGTTCAAATGATCCTCAATTCACTTATTAACA
 AGTCAAAATCTTCTATGTTCCAAGTCAGAACTTTGAGAGAAGTGTATGGGGCTATAGGGATCCATTTTT
 GAGTTTGGTTCGGTACCCTGTTACTACCACAGTTGGTCTGTTTTATCCTTACAACAATACTGCAGATGGA
 GTTTATAAAGTTTTCAATGGAAAAGATAACATAAGTAAAGTTGCCATAATCGACACATATAAAGGTA
 GGAATCTGTCCTATTGGGAAAGTCACTGCGACATGATTAAATGGTACAGATGCAGCCTCATTTCCACCTTT
 TGTGAGAAAAGCCAGGTATTGCAGTCTTTTCTTCTGATATTTGCAGGTCAATCTATGCTGATTTGAA
 TCCGACGTTAATCTGAAAGGAATCCCTGTGTATAGATTTGTTCTTCCATCCAAGGCCCTTTCCTCCAG
 TTGAAAACCCAGACAACATTTGTTTCTGCACAGAAAAAATATCTCAAAAAATTGACATCATATGGTGT
 GCTAGACATCAGCAAATGCAAAGAAGGGAGACCTGTGTACATTTCACTTCCTCATTTTCTGTATGCAAGT
 CCTGATGTTTCAAGACCTATTGATGGATTAACCCAAATGAAGAAGAACATAGGACATACTGGATATTG
 AACCTATAACTGGATTCACCTTACAATTTGCAAAACGGCTGCAGGTCAACCTATTGGTCAAGCCATCAGA
 AAAAAATCAAGTATTAAGAATCTGAAGAGGAACATATATTGTGCCTATTCTTTGGCTTAATGAGACTGGG
 ACCATTGGTGATGAGAAGCAAACATGTTCAAGTCAAGTAACTGGAAAAATAAACCTCCTTGGCCTGA
 TAGAAATGATCTTACTCAGTGTTGGTGTGGTGTGTTGTTGCTTTTATGATTTCAATTGTGCATGCAG
 ATCGAAAAACAATAAAA

ACCGGTACGCGGCCGCTCGAGCAGAACTCATCTCAGAAGAGGATCTGGCAGCAAATGATATCCTGGATT
 ACAAGGATGACGACGATAAGGTTTAA

Protein Sequence:

>RC223825 representing NM_001001547
 Red=Cloning site Green=Tags(s)

MGCDRNCGLIAGAVIGAVLAVFGGILMPVGDLLIQKTIKKQVVLEEGTIAFKNWKVKGTEVYRQFWIFDV
 QNPQEVMMSSNIQVKQRGSYTYRVRFLAKENVTQDAEDNTVSFLQPNGAIFEPSLSVGTEADNFTVLNL
 AVAAASHIYQNFVQMILNSLINKSSMFQVRTLRELLWGYRDPFLSLVPYPVTTTVGLFYPNNTADG
 VYKVFNGKDNISKVAIIDTYKGRNLSYWESHCDMINGTDAASFPPFVEKSQVLQFFSSDICRSIYAVFE
 SDVNLKGIPIVYRFVLPKAFASPVENPDNYCFCTEKIISKNCTSYGVLDISKCKEGRPVYISLPHFLYAS
 PDVSEPIDGLNPNEEEHRTYLDIEPITGFTLQFAKRLQVNLVKPSEKIQLKLNKRNYPVILWLNQETG
 TIGDEKANMFRSQVTGKINLLGLIEMILLSVGVVMFVAFMISYCACRSKTIK

TRTRPLEQKLISEEDLAANDILDYKDDDDKV

Chromatograms:

https://cdn.origene.com/chromatograms/mk6055_g11.zip

Restriction Sites:

Sgfl-Mlul

Cloning Scheme:


ACCN: NM_001001547

ORF Size: 1416 bp

OTI Disclaimer: The molecular sequence of this clone aligns with the gene accession number as a point of reference only. However, individual transcript sequences of the same gene can differ through naturally occurring variations (e.g. polymorphisms), each with its own valid existence. This clone is substantially in agreement with the reference, but a complete review of all prevailing variants is recommended prior to use. [More info](#)

OTI Annotation: This clone was engineered to express the complete ORF with an expression tag. Expression varies depending on the nature of the gene.

Components: The ORF clone is ion-exchange column purified and shipped in a 2D barcoded Matrix tube containing 10ug of transfection-ready, dried plasmid DNA (reconstitute with 100 ul of water).

- Reconstitution Method:**
1. Centrifuge at 5,000xg for 5min.
 2. Carefully open the tube and add 100ul of sterile water to dissolve the DNA.
 3. Close the tube and incubate for 10 minutes at room temperature.
 4. Briefly vortex the tube and then do a quick spin (less than 5000xg) to concentrate the liquid at the bottom.
 5. Store the suspended plasmid at -20°C. The DNA is stable for at least one year from date of shipping when stored at -20°C.

RefSeq: [NM_001001547.3](#)

RefSeq Size: 2050 bp

RefSeq ORF: 1419 bp

Locus ID: 948

UniProt ID: [P16671](#)

Cytogenetics: 7q21.11

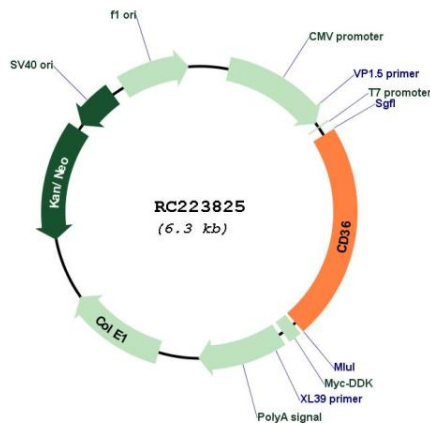
Protein Families: Druggable Genome, Transmembrane

Protein Pathways: Adipocytokine signaling pathway, ECM-receptor interaction, Hematopoietic cell lineage, PPAR signaling pathway

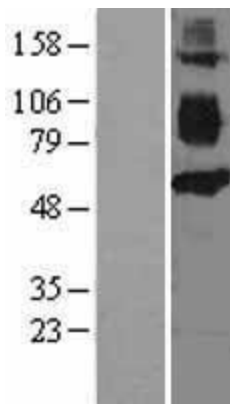
MW: 52.9 kDa

Gene Summary: The protein encoded by this gene is the fourth major glycoprotein of the platelet surface and serves as a receptor for thrombospondin in platelets and various cell lines. Since thrombospondins are widely distributed proteins involved in a variety of adhesive processes, this protein may have important functions as a cell adhesion molecule. It binds to collagen, thrombospondin, anionic phospholipids and oxidized LDL. It directly mediates cytoadherence of *Plasmodium falciparum* parasitized erythrocytes and it binds long chain fatty acids and may function in the transport and/or as a regulator of fatty acid transport. Mutations in this gene cause platelet glycoprotein deficiency. Multiple alternatively spliced transcript variants have been found for this gene. [provided by RefSeq, Feb 2014]

Product images:



Circular map for RC223825



Western blot validation of overexpression lysate (Cat# [LY424372]) using anti-DDK antibody (Cat# [TA50011-100]). Left: Cell lysates from untransfected HEK293T cells; Right: Cell lysates from HEK293T cells transfected with RC223825 using transfection reagent MegaTran 2.0 (Cat# [TT210002]).