

## Product datasheet for **RC223817**

### GSDMC (NM\_031415) Human Tagged ORF Clone

#### Product data:

Product Type:	Expression Plasmids
Product Name:	GSDMC (NM_031415) Human Tagged ORF Clone
Tag:	Myc-DDK
Symbol:	GSDMC
Synonyms:	MLZE
Mammalian Cell Selection:	Neomycin
Vector:	pCMV6-Entry (PS100001)
E. coli Selection:	Kanamycin (25 ug/mL)



[View online »](#)

**ORF Nucleotide Sequence:**

>RC223817 ORF sequence  
 Red=Cloning site Blue=ORF Green=Tags(s)

TTTTGTAATACGACTCACTATAGGGCGGCCGGAATTCGTCGACTGGATCCGGTACCGAGGAGATCTGCC  
 GCC**CGCATCGCC**

ATGCCCTCCATGTTGGAACGCATTAGCAAAAATTTGGTCAAAGAGATTGGAAGCAAAGACCTGACATCTG  
 TCAAAATACCTATTGAGTGCCACCAAATTACGTCAGTTTGTATATTACGAAAAGAAGAAGGATTCTCGTTC  
 ATCATTTTGGGAACAATCTGACTATGTTCCAGTTGAATTCCTCAATGACATCTGGAGCCAAGTTCT  
 TCAGTCTAGAAACTGTTGTGACAGGACCGTTCCACTTCAGTGACATTATGATCCAGAAGCATAAGGCTG  
 ACATGGGTGTGAATGTTGGTATAGAAGTGAGTGTGTGAGGGGAGGCTCTGTGGACCATGGATGCTCCCT  
 CGAGTTTCAAATGTTACCATCCATACCAAACCTGGAAGACTTTCAAAAAGGAAACTGTTGGATCCA  
 GAGCCATCATTTCTGAAGGAGTGCCGGAGGAGAGGGGACAACCTGTACGTGGTACAGAGGCTGTTGAAC  
 TGATCAACAATACTGTGCTGTACGATAGCAGTAGTGTGAATTTTAGGGAAAATGCTCTTTGGATTAC  
 CTATGGCAAGGGTCAAGGCCAAGGAGAGAGTCTCAGAGTGAAGAAGAAGGCGCTGACTCTCAGAAAGGC  
 ATGGTGATGGCTTATAAGAGAAAAGCAGCTGGTTATCAAGGAGAAAAGCCATTCTCATCTCAGATGATGATG  
 AACAGAGAACCTTTCAAGATGAGTACGAAATTTCCGAAATGGTAGGCTACTGTGCTGCGAGGAGTGAGGG  
 GTTGCTACCATCATTTACATACCATCTCTCCAACCTCTTCAATGCCTCATCCAATGATATGAAGTAAAA  
 CCAGAGCTATTTCTGACACAGCAATTTTGGAGCGGCAATTTGCCAAAATACGAACAAGTTACATCCTCC  
 CAGTAGGAAGAATAGAGGAACCTTCTGGCAAAATTTCAAGCATCTACAAGAGGAGGTTTTCCAGAAAAT  
 AAAGACTGGCTCAGCTCTCAAAGGATGTTGAGGATGTCATGTTCTACAGTATCCTGGCCATGCTCAGA  
 GACAGAGGGGCTACAGGACCTGATGAACATGCTGGAATTGGACAGCTCAGTCAATTTGGATGGCCCTG  
 TGGTGGCATCTAAAGAAACTCAACAGGATTCAAACCATGCATGGTTTAAACCAAGGACCCCATTTCT  
 TTATCTCCTTGAAGCCATAATGGTGTGCTGAGTACTTCCAACACGATTTGCTGGCCTGTTCCATGGAGAAG  
 AGGATCTGCTTCAAGCAACAGGAGCTGGTAAGGAGCATCCTGGAGCCAACTTCAAGATACCCTGGAGCA  
 TTCCCTTACCCTCAAACCTGAGCTCTCGCCCACTCCAGAGTGAAGGTTTGGCCATCACCTATGGCCT  
 GCTGGAGGAGTGTGGCCTTAGGACGGAGCTGGATAACCCAGGTCAACCTGGGATGTAGAAGCAAAGATG  
 CCCCTGTCTGCCCTCTATGGACTCTCTATTGCTGCAGCAGCTGGCTGAGGCC

**ACGCGT**ACGCGGCCGCTCGAGCAGAAACTCATCTCAGAAGAGGATCTGGCAGCAAATGATATCCTGGATT  
 ACAAGGATGACGACGATAAGGTTTAA

**Protein Sequence:**

>RC223817 protein sequence  
 Red=Cloning site Green=Tags(s)

MPSMLERISKNLVKEIGSKDLTSVKYLLSATKLRQFVILRKKKDSRSSFWEQSDYVYPVEFSLNDILEPSS  
 SVLETVVTGPFHFSDIMIQQHKADMGVNNGIEVSVSGEASVDHGCSLEFQIVTIPSPNLEDFQKRKLLDP  
 EPSFLKECRRRGDNLVYVTEAVELINNTVLYDSSVNILKIALWITYGKGQGGESLRVKKKALTLQKG  
 MVMAYKRKQLVIKEKAILISDDDEQRTFQDEYEISEMVGYCAARSEGLLPSFHTISPTLFNASSNDMKLK  
 PELFLTQQFLSGHLPKYEQVHILPVGRIEPPFWQNFKHLQEEVFQKIKTLAQLSKDVQDVMFYILAMLR  
 DRGALQDLMNMLELDSSGHLDPGGAILKKLQQDSNHAWFNPKDPILYLLEAIMVLSDFQHDLLACSMK  
 RILLQQQELVRSILEPNFRYPWSIPFTLPELLAPLQSEGLAITYGLLEECGLRTELDPNRSTWDVEAKM  
 PLSALYGTLSLLQQLAEA

**TRTRPLEQKLI**SEEDLAANDILDYKDDDDKV

**Chromatograms:**

[https://cdn.origene.com/chromatograms/mk6454\\_d04.zip](https://cdn.origene.com/chromatograms/mk6454_d04.zip)

**Restriction Sites:**

Sgfl-Mlul

**Cloning Scheme:**


**ACCN:** NM\_031415

**ORF Size:** 1524 bp

**OTI Disclaimer:** The molecular sequence of this clone aligns with the gene accession number as a point of reference only. However, individual transcript sequences of the same gene can differ through naturally occurring variations (e.g. polymorphisms), each with its own valid existence. This clone is substantially in agreement with the reference, but a complete review of all prevailing variants is recommended prior to use. [More info](#)

**OTI Annotation:** This clone was engineered to express the complete ORF with an expression tag. Expression varies depending on the nature of the gene.

**Components:** The ORF clone is ion-exchange column purified and shipped in a 2D barcoded Matrix tube containing 10ug of transfection-ready, dried plasmid DNA (reconstitute with 100 ul of water).

- Reconstitution Method:**
1. Centrifuge at 5,000xg for 5min.
  2. Carefully open the tube and add 100ul of sterile water to dissolve the DNA.
  3. Close the tube and incubate for 10 minutes at room temperature.
  4. Briefly vortex the tube and then do a quick spin (less than 5000xg) to concentrate the liquid at the bottom.
  5. Store the suspended plasmid at -20°C. The DNA is stable for at least one year from date of shipping when stored at -20°C.

**Note:** Plasmids are not sterile. For experiments where strict sterility is required, filtration with 0.22um filter is required.

**RefSeq:** [NM\\_031415.3](#)

**RefSeq Size:** 2731 bp

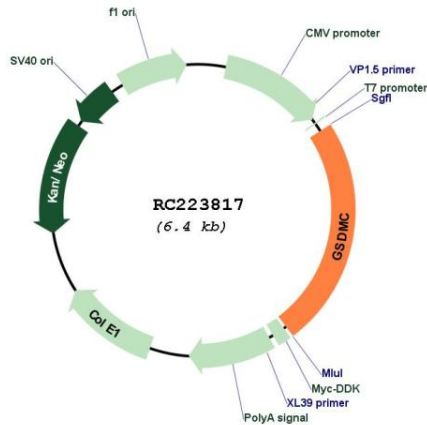
**RefSeq ORF:** 1527 bp

**Locus ID:** 56169

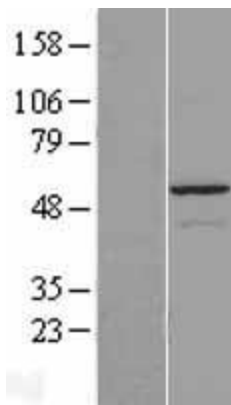
**UniProt ID:** [Q9BYG8](#)  
**Cytogenetics:** 8q24.21  
**Domains:** DFNA5  
**MW:** 57.7 kDa

**Gene Summary:** The N-terminal moiety promotes pyroptosis. May be acting by homooligomerizing within the membrane and forming pores (PubMed:27281216). The physiological relevance of this observation is unknown (Probable).[UniProtKB/Swiss-Prot Function]

### Product images:



Circular map for RC223817



Western blot validation of overexpression lysate (Cat# [LY410540]) using anti-DDK antibody (Cat# [TA50011-100]). Left: Cell lysates from untransfected HEK293T cells; Right: Cell lysates from HEK293T cells transfected with RC223817 using transfection reagent MegaTran 2.0 (Cat# [TT210002]).