

Product datasheet for RC223816

Leptin Receptor (LEPR) (NM_002303) Human Tagged ORF Clone

Product data:

Product Type:	Expression Plasmids
Product Name:	Leptin Receptor (LEPR) (NM_002303) Human Tagged ORF Clone
Tag:	Myc-DDK
Symbol:	Leptin Receptor
Synonyms:	CD295; LEP-R; LEPRD; OB-R; OBR
Mammalian Cell Selection:	Neomycin
Vector:	pCMV6-Entry (PS100001)
E. coli Selection:	Kanamycin (25 ug/mL)
ORF Nucleotide Sequence:	>RC223816 representing NM_002303 Red=Cloning site Blue=ORF Green=Tags(s)

TTTTGTAATACGACTCACTATAGGGCGGCCGGAATTCGTCGACTGGATCCGGTACCGAGGAGATCTGCC
GCC**CGATCGCC**

ATGATTTGTCAAAAATTCTGTGTGGTTTTGTTACATTGGGAATTTATTTATGTGATAACTGCGTTTAACT
TGTCATATCCAATTACTCCTTGGAGATTTAAGTTGTCTTGCATGCCACCAAATCAACCTATGACTACT
CCTTTTGCCTGCTGGACTCTCAAAGAATACTTCAAATTCGAATGGACATTATGAGACAGCTGTTGAACCT
AAGTTTAAATCAAGTGGTACTCACTTTTCTAACTTATCCAAAACAACCTTCCACTGTTGCTTTCGGAGTG
AGCAAGATAGAACTGCTCCTTATGTGCAGACAACATTGAAGGAAGGACATTTGTTTCAACAGTAAATTC
TTTAGTTTTTCAACAAATAGATGCAAACTGGAACATACAGTGCTGGCTAAAAGGAGACTTAAATATTC
ATCTGTTATGTGGAGTCATTATTTAAGAATCTATTCAGGAATTATAACTATAAGGTCCATCTTTTATATG
TTCTGCCTGAAGTGTAGAAAGTTCACCTCTGGTCCCAAAAAGGCAGTTTTTCAGATGGTTCACGTGCAA
TTGCAGTGTTCATGAATGTTGTGAATGTCTTGTGCCTGTGCCAACAGCCAAACTCAACGACACTCTCCTT
ATGTGTTTGAAAATCACATCTGGTGGAGTAATTTCCGGTACCTCTAATGTCAGTTCAGCCATAAATA
TGGTGAAGCCTGATCCACCATTAGGTTTGCATATGGAAATCACAGATGATGGTAATTTAAAGATTTCTTG
GTCCAGCCACCATTGGTACCATTTCCACTTCAATATCAAGTGAATATTCAGAGAATTTACAACAGTT
ATCAGAGAAGCTGACAAGATTGTCTCAGCTACATCCCTGCTAGTAGACAGTATACTTCCCTGGGCTTCGT
ATGAGGTTCAAGTGGAGGCAAGAGACTGGATGGCCAGGAATCTGGAGTGACTGGAGTACTCCTCGTGT
CTTTACCACACAAGATGTCATATACTTTCCACCTAAAATCTGACAAGTGTGGGTCTAATGTTTCTTTT
CACTGCATCTATAAGAAGGAAAACAAGATTGTTCCCTCAAAGAGATTGTTTGGTGGATGAATTTAGCTG
AGAAAATCCTCAAAGCCAGTATGATGTTGTGAGTGATCATGTTAGCAAAGTTACTTTTTCAATCTGAA
TGAAACCAAACTCGAGGAAAGTTACCTATGATGCAGTGTACTGCTGCAATGAACATGAATGCCATCAT
CGCTATGCTGAATTATATGTGATTGATGTCATATCAATATCTCATGTGAAACTGATGGGTACTTAACTA
AAATGACTTGCAGATGGTCAACCAGTACAATCCAGTCACTTGCAGAAAGCACTTTGCAATTGAGGTATCA
TAGGAGCAGCCTTACTGTTCTGATATTCATCTATTCATCCCATCTGAGCCCAAAGATTGCTATTTG



[View online »](#)

CAGAGTGATGGTTTTATGAATGCATTTCCAGCCAATCTTCTATTATCTGGCTACACAATGTGGATTA
GGATCAATCACTCTCTAGGTTCACTTGACTCTCCACCAACATGTGTCCTTCTGATTCTGTGGTGAAGCC
ACTGCCTCCATCCAGTGTGAAAGCAGAAATTAATAAACATTGGATTATTGAAAATATCTTGGGAAAAG
CCAGTCTTTCCAGAGAATAACCTTCAATTCAGATTTCGCTATGGTTTAAAGTGAAAAGAAGTACAATGGA
AGATGTATGAGGTTTATGATGCAAAATCAAATCTGTCAGTCTCCAGTTCAGACTTGTGTGCAGTCTA
TGCTGTTCAAGTGCCTGTAAGAGGCTAGATGGACTGGGATATTGGAGTAATTGGAGCAATCCAGCCTAC
ACAGTTGTCATGGATATAAAAGTTCCTATGAGAGGACCTGAATTTGGAGAATAATTAATGGAGATACTA
TGAAAAGGAGAAAAATGTCACTTTACTTTGGAAGCCCTGATGAAAATGACTCATTGTGCAGTGTTC
GAGATATGTGATAAACCATCATACTTCTGCAATGGAACATGGTCAGAAGATGTGGGAAATCACACGAAA
TTCACTTTCTGTGGACAGAGCAAGCACATACTGTTACGGTTCTGGCCATCAATTCAATGGTGCTTCTG
TTGCAATTTTAAATTAACCTTTTCATGGCCTATGAGCAAAGTAAATATCGTGCAGTCACTCAGTCTTA
TCCTTTAAACAGCAGTGTGTGATTGTTTCTGGATACTATCACCCAGTGATTACAAGCTAATGTATTTT
ATTATTGAGTGGAAAACTTAATGAAGATGGTAAATAAAATGGCTTAGAATCTCTTCATCTGTTAAGA
AGTATTATATCCATGATCATTTTATCCCATTGAGAAGTACCAGTTCAGTCTTTACCAATATTTATGGA
AGGAGTGGAAAACCAAAGATAATTAATAGTTTCACTCAAGATGATATTGAAAACACCAGAGTGTGCA
GGTTTATATGTAATTGTGCCAGTAATTATTTCTTCCATCTTATTGCTTGGAACATTATAATATCAC
ACCAAAGAATGAAAAGCTATTTTGGGAAGATGTTCCGAACCCCAAGAATTGTTCTGGGCACAAGGACT
TAATTTTTCAGAAGCCAGAAACGTTTGGAGCATCTTTTATCAAGCATACAGCATCAGTGACATGTGGTCT
CTTCTTTTGGAGCCTGAAACAATTTTCAGAAGATATCAGTGTGATACATCATGAAAAATAAAGATGAGA
TGATGCCAACAACTGTGGTCTCTACTTTCAACAACAGATCTTGAAAAGGGTCTGTTTGTATTAGTGA
CCAGTTCAACAGTGTAACTTCTCTGAGGCTGAGGTAACCTATGAGGACGAAAGCCAGAGA
CAACCTTTGTTAAATACGCCACGCTGATCAGCAACTCTAAACCAAGTAACTGGTGAAGAACAAGGGC
TTATAAATAGTTCAGTCACCAAGTCTTCTAGCAAAAATTTCCATTGAAGGATCTTTCTTAATAG
CTCATGGGAGATAGAGGCCAGGCATTTTTTATATTATCAGATCAGCATCCCAACATAATTTACCACAC
CTCACATTCTCAGAAGGATTGGATGAACTTTTGAAATTGGAGGAAATTTCCCTGAAGAAAATAATGATA
AAAAGTCTATCTATTATTTAGGGGTACCTCAATCAAAAAGAGAGAGAGTGGTGTCTTTGACTGACAA
GTCAAGGGTATCGTGCCATTCCAGCCCCCTGTTTATTCACGGACATCAGAGTTCTCCAGGACAGTTGC
TCACACTTTGTAGAAAATAATATCAACTTAGGAACTTCTAGTAAGAAGACTTTTGCATCTTACATGCCTC
AATTCAAACTTGTCTACTCAGACTCATAAGATCATGAAAACAAGATGTGTGACCTAACTGTG

ACGCGTACGCGGCCGCTCGAGCAGAACTCATCTCAGAAGAGGATCTGGCAGCAAATGATATCTGGATT
ACAAGGATGACGACGATAAGGTTTAA

Protein Sequence: >RC223816 representing NM_002303
 Red=Cloning site Green=Tags(s)

MICQKFCVLLHWEFIYVITAFNLSYPITPWRFKLSCMPPNSTYDYFLLPAGLSKNTSNSNGHYETAPEP
 KFNSSGTHFSNLKSTTFHCCFRSEQDRNCSLCA D NIEGRTFVSTVNSLVFQQIDANWNIQCWLKGD LKLF
 ICYVESL FKNLFRN YNYKVHLLYVLPVLEDSPLVPQKGSFQMVHCNCSVHECCECLVPVPTAKLNDTLL
 MCLKITSGGVI FRSP LMSVQPI NMVKPDPPLGLHMEITDDGNLKI SWSSPPLVPFPLQYQVKYSENSTTV
 IREADKIVSATSLLVDSILPGSSYEVQVRGKRLDGP GIWSDWSTPRVFTTQDVIYFPPKILT SVGSNVSF
 HCIYKKNKIVPSKEIVWWMNLAEKIPQSQDYDVSDHVSKVTF FN LNETKPRGKFTYDAVYCCNEHECHH
 RYAELYVIDVNI NISCETDGYLTKMTCRWSTSTIQSLAESTLQLRYHRSSLYCSDIPSIHP ISEPKDCYL
 QSDGFYECIFQPIFLLSGYTMWIRINHSLGSLDSPPTCVLPDSVVKPLPPSSVKA EITINIGLLKISWEK
 PVFPENNLQFQIRYGLSGKEVQWKMYEVYDAKSKSVSLPVPDLCAVYAVQVRCKRLDGLGYWSNWSNPAY
 TVVMDIKVPMRGPEFWRIINGDTMKKEKNVTLWKPLMKNDSLCSVQRYVINHHTSCNGT WSEDVGNHTK
 FTFLWTEQAHTVTVLAINSIGASVANFNLTFSWPMSKVNIVQSL SAYPLN SSCVIVSWILSPSDYKLMYF
 IIEWKNLNEDGEIKWLRISSSVKKYYIHDHFIP IEKYQFSLYPIFMEGVGKPKIINSFTQDDIEKHQSDA
 GLYVIVPVI ISSSILLGLTLLISHQRMKFLWEDVPNPKNC SWAQLNFKPETFEHLFIKHTASVTCGP
 LLLLEPETISEDISVDTSWKNKDEMPTTVVSLSTTDLEKGSVCISDQFNSVNFSEAEGTEVTEDESQR
 QPFVKYATLISNSK PSETGEEQLINSSVTKCFSSKNSPLKDFSNSSWEIEAQAFFILSDQHPNII SPH
 LTFSEGLDELLKLEGNFPEENNDKKSIIYLVGVTSIKKRESGVL LTKSRVSCPPAPCLFTDIRVLQDSC
 SHFVENNINLGTSSKTFASYMPQFQTCTSTQTHKIMENK MCDLTV

TRTRPLEQKLISEEDLAANDILDYKDDDDKV

Chromatograms: https://cdn.origene.com/chromatograms/mk6168_f08.zip

Restriction Sites: SgfI-MluI

Cloning Scheme:

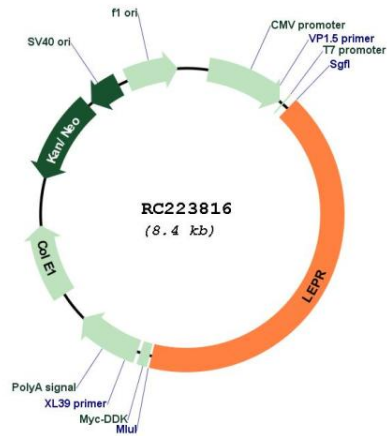


ACCN: NM_002303

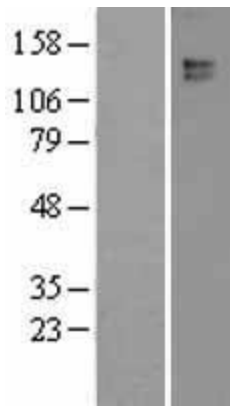
ORF Size: 3495 bp

OTI Disclaimer:	The molecular sequence of this clone aligns with the gene accession number as a point of reference only. However, individual transcript sequences of the same gene can differ through naturally occurring variations (e.g. polymorphisms), each with its own valid existence. This clone is substantially in agreement with the reference, but a complete review of all prevailing variants is recommended prior to use. More info
OTI Annotation:	This clone was engineered to express the complete ORF with an expression tag. Expression varies depending on the nature of the gene.
Components:	The ORF clone is ion-exchange column purified and shipped in a 2D barcoded Matrix tube containing 10ug of transfection-ready, dried plasmid DNA (reconstitute with 100 ul of water).
Reconstitution Method:	<ol style="list-style-type: none">1. Centrifuge at 5,000xg for 5min.2. Carefully open the tube and add 100ul of sterile water to dissolve the DNA.3. Close the tube and incubate for 10 minutes at room temperature.4. Briefly vortex the tube and then do a quick spin (less than 5000xg) to concentrate the liquid at the bottom.5. Store the suspended plasmid at -20°C. The DNA is stable for at least one year from date of shipping when stored at -20°C.
Note:	Plasmids are not sterile. For experiments where strict sterility is required, filtration with 0.22um filter is required.
RefSeq:	NM_002303.6
RefSeq Size:	4102 bp
RefSeq ORF:	3498 bp
Locus ID:	3953
UniProt ID:	P48357
Cytogenetics:	1p31.3
Domains:	FN3
Protein Families:	Druggable Genome, Secreted Protein, Transmembrane
Protein Pathways:	Adipocytokine signaling pathway, Cytokine-cytokine receptor interaction, Jak-STAT signaling pathway, Neuroactive ligand-receptor interaction
MW:	132.55 kDa
Gene Summary:	The protein encoded by this gene belongs to the gp130 family of cytokine receptors that are known to stimulate gene transcription via activation of cytosolic STAT proteins. This protein is a receptor for leptin (an adipocyte-specific hormone that regulates body weight), and is involved in the regulation of fat metabolism, as well as in a novel hematopoietic pathway that is required for normal lymphopoiesis. Mutations in this gene have been associated with obesity and pituitary dysfunction. Alternatively spliced transcript variants encoding different isoforms have been described for this gene. It is noteworthy that this gene and LEPROT gene (GeneID:54741) share the same promoter and the first 2 exons, however, encode distinct proteins (PMID:9207021).[provided by RefSeq, Nov 2010]

Product images:



Circular map for RC223816



Western blot validation of overexpression lysate (Cat# [LY400832]) using anti-DDK antibody (Cat# [TA50011-100]). Left: Cell lysates from untransfected HEK293T cells; Right: Cell lysates from HEK293T cells transfected with RC223816 using transfection reagent MegaTran 2.0 (Cat# [TT210002]).