

Product datasheet for **RC223815**

CFAP94 (NM_018272) Human Tagged ORF Clone

Product data:

Product Type:	Expression Plasmids
Product Name:	CFAP94 (NM_018272) Human Tagged ORF Clone
Tag:	Myc-DDK
Symbol:	CFAP94
Synonyms:	CASC1; LAS1; PPP1R54
Mammalian Cell Selection:	Neomycin
Vector:	pCMV6-Entry (PS100001)
E. coli Selection:	Kanamycin (25 ug/mL)



[View online »](#)

ORF Nucleotide Sequence:

>RC223815 representing NM_018272
 Red=Cloning site Blue=ORF Green=Tags(s)

TTTTGTAATACGACTCACTATAGGGCGGCCGGAATTCGTGACTGGATCCGGTACCGAGGAGATCTGCC
 GCC**CGCATCGCC**

ATGGGTCCCAAAGCAAAAAGTCTGGCAGTAAGAAAAAGAAAGTACCAAAGCTGAACGATTGAAGCTGC
 TACAAGAGGAGGAGGAGAGACGACTGAAAGAGGAAGAGGAAGCCGTTTAAAATATGAGAAAAGAAGAAAT
 GGAAAGGCTTGAATACAGCGAATTGAGAAAGAAAAATGGCATCGACTTGAAGCAAAAAGATCTAGAAAGG
 AGAAATGAAGAACTTGAAGAAGTTATTTATTAGAGAGGTGTTTTCTGAAGCAGAGAAATGAAACAGG
 AAATAAATTGCTTTCTCAGTGGAAAGCACTACATTCAATGTGTATGGGAGTCTGATCCTTCAGTAGCCCA
 AGAAATGAACACGTTTATTAGTTTGTGGAAAGAGAAAACAATGAGACTTTTGAAGAAAGTATTGAGAAG
 AGTAAAGTAGTGCTAAATTTAATTGAGAAATTGAAATTTATTTACTGGAACTCCACCATTGTGATTTGC
 AAGATAAAAATAAATACAGTACCAAGAATCAATACTACAAGTGCAGGAGCTCCTTCATCTTAAATTCGG
 TGTAGCCACAGAAATACTTCTCAAACAAGCTAGTACTTTGGCAGATCTGGACAGTGGAAATATGGAAAA
 GTCATTAAGATGAAATGTTACTCTGTATGTGTGGGCAACCTCAAGAAGAATCCAAGGCACAGAAGTG
 TTAGATTCTCTGAAACACAAATTGGATTTGAGATTCGAAGGATATTAGCAACAAGTGACATTGCTGTACG
 ACTCCTGCATACCCACTATGATCATGTTTCTGCACTGCACCCTGTTTCAACACCATAAAAAGAATACACT
 TCTGCAGTAACTGAGCTTGTCAAAGATGATGTTAAGAATGTAGAAAAAGCAATCAGCAAGGAGGTGGAAG
 AAGAGTCCAAACAACAAGAAAGAGGGTCTCACTTAATTCAGGAGGAAGAAATAAAAGTTGAGGAGGAACA
 AGGTGATATTGAAGTGAAGTGAAGTCTGCTGAGGAAGAATCTGAAGCCATAAAATGTGAACGAGAGATG
 AAAGTATTAAGTGAAGTGTTCAGCAGCACAGTTGTTGCTGGTAGAGAATCTTCTGAAAAGCCAGATT
 TCTTTGAAGACAATGGTGGATTTATGCCAGTTCACAACCTCTGGGTGGAGTATACCATTGGATTTTT
 GGAGCTTCTCCACAGTGTAAACCAAGTGAAGGGATGGATGATTGTGAAAATACTCAAAGAAGGATTACAG
 AAATACACATATCCTCCGAAACTACAGAAGAGTTTGGAGACAGAAAATGCTTTCCACCTATAGAGGTCA
 CACTTGAGGTTTATGAGAATGTAATCTTTTTGAGGATCCTGTGGTTGTAAGGTGGGATGCTGAAGGTAA
 ACATTGGAGAAGTATGGCATCAGCAATGTATCCTACAAACAAAAGAAAGACTTGTAAACATTGAGCCTG
 GACACCTTTGGCCCTGTACCTTGATTCAAGATGCTCATATTAACATGCCGTACCAGTATGGGAACATA
 GACCACCTTGATGTAATAAAGTACTTTAACTGTGACTACAGTATTTACTGAGATTCAAATACAAATTA
 GAAAAACCTCTGCATGTTATCTTCAATCAAACAAAAGACAAGAAACACATCTCTATTTTGAAGGAACC
 TGGATGACTCCTATTCTTTTATTATTGCTTTGAAAGAAGCTGGACTGAATATCTTTCTACTAGACACT
 CTCATTTTTATGTTATTATAACAATAAGTTCCTTTGGTAGAAGTGAAGCTTATCGACAGATGGCCCT
 ACTAAGTCTGCTTTTGCATTTGGTTGGAGCAAGTGAACCTACTATGTAATTCTACAAAAGTCGATTT
 AAGGTGAGGGAACACCTTACTGAAGATGACTGAGAATCCTAATTGGGCCCTTTAATGTTTGTGGT
 ACAGAGCACAAGACTGAAGATCAAGGAAGAGAGTGGAGCATTCTTGAAGCACTAAAGAAGAACTGA
 GTTTCATTCTACTTTATATCACATGGTGAAGGATTTGCTTCTGAGGAAGCAATGGAGAAAGTCAGGAGT
 TCCAACGTCAAGTTGTCAACTCTGTGTGCCACATGCTGCTCTCTACCAGATTGCTCAGCTACTCC

ACGCGTACGCGGCCGCTCGAGCAGAACTCATCTCAGAAGAGGATCTGGCAGCAAATGATATCCTGGATT
 ACAAGGATGACGACGATAAGGTTTAA

Protein Sequence: >RC223815 representing NM_018272
 Red=Cloning site Green=Tags(s)

MGPKAKKSGSKKKKVTKAERLKLQEEEEERLKEEEEARLKYEEEMERLEIQRIEKEKWHRLKADLER
 RNEELEELYLLERCPEAEKQETKLLSQWKHYIQCDGSPDPSVAQEMNTFISLWKEKTNETFEVIEK
 SKVVLNLIIEKLFILLETPPCDLQDKNIQYQESILQLQELLHLKFGVATEILLKQASTLADLDSGNMEK
 VIKDENVTLYVWANLKKNPRHRSVRFSETQIGFEIPRILATSDIAVRLHLHthydHVSALHPVSTPSKEYT
 SAVTELVKDDVKNVEKATISKEVEEESKQQERGSHLIQEEEEIKVEEEQGDIEVKMSSAESEAIK CEREM
 KVLSETVSAAQLLLVENSSEKPDFEDNVVDLCQFTTLGGVYHLDILELPPQCKPVKGMWIVEILKEGLQ
 KYTYPPETTEEFETENAFPIEVTLVHENVIFFEDPVVVRWDAEGKHWRTDGISNVSYKPKERLVTFSL
 DTFGPVTLIQDAHINMPYQSWELRPLDVNKVLLTVTTVFTEIQIQIKENLCMLSSIKLKDKKHISILEGT
 WMTPIPIIALKEAGLNIFPTRHSHFYVIINNKVPLVEVKAYRQALLSSAFAGWSKNLLCNSTKVVV
 KVREHLTEECTENPNWALLMFGDRAQRLKIKEESEAFSEALKEETEFHSTLYHMVKDFASEEAMEKVRS
 SNCQFVNSVCHMLLSTRLLSYS

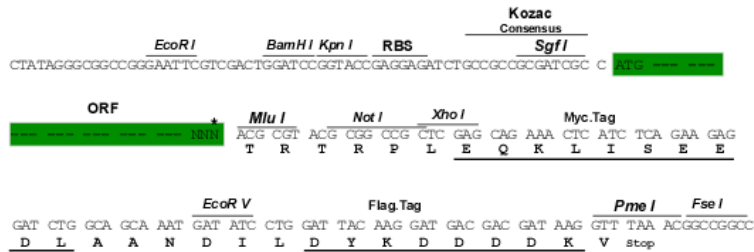
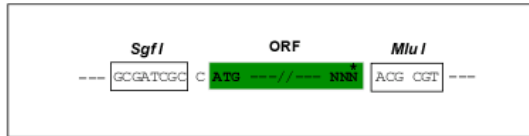
TRTRPLEQKLISEEDLAANDILDYKDDDDKV

Chromatograms: https://cdn.origene.com/chromatograms/mk8046_g11.zip

Restriction Sites: SgfI-MluI

Cloning Scheme:

Cloning sites used for ORF Shuttling:



* The last codon before the Stop codon of the ORF

ACCN: NM_018272

ORF Size: 2166 bp

OTI Disclaimer: Due to the inherent nature of this plasmid, standard methods to replicate additional amounts of DNA in E. coli are highly likely to result in mutations and/or rearrangements. Therefore, OriGene does not guarantee the capability to replicate this plasmid DNA. Additional amounts of DNA can be purchased from OriGene with batch-specific, full-sequence verification at a reduced cost. Please contact our customer care team at custsupport@origene.com or by calling 301.340.3188 option 3 for pricing and delivery.

The molecular sequence of this clone aligns with the gene accession number as a point of reference only. However, individual transcript sequences of the same gene can differ through naturally occurring variations (e.g. polymorphisms), each with its own valid existence. This clone is substantially in agreement with the reference, but a complete review of all prevailing variants is recommended prior to use. [More info](#)

OTI Annotation: This clone was engineered to express the complete ORF with an expression tag. Expression varies depending on the nature of the gene.

Components: The ORF clone is ion-exchange column purified and shipped in a 2D barcoded Matrix tube containing 10ug of transfection-ready, dried plasmid DNA (reconstitute with 100 ul of water).

Reconstitution Method:

1. Centrifuge at 5,000xg for 5min.
2. Carefully open the tube and add 100ul of sterile water to dissolve the DNA.
3. Close the tube and incubate for 10 minutes at room temperature.
4. Briefly vortex the tube and then do a quick spin (less than 5000xg) to concentrate the liquid at the bottom.
5. Store the suspended plasmid at -20°C. The DNA is stable for at least one year from date of shipping when stored at -20°C.

RefSeq: [NM_018272.4](#)

RefSeq Size: 2523 bp

RefSeq ORF: 2169 bp

Locus ID: 55259

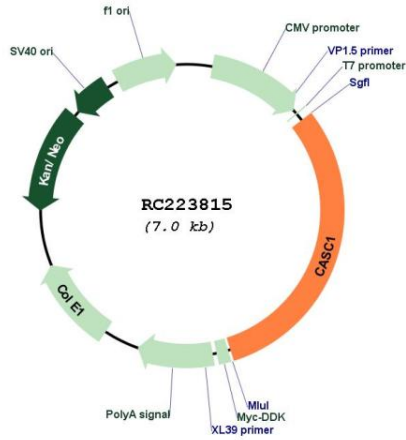
UniProt ID: [Q6TDU7](#)

Cytogenetics: 12p12.1

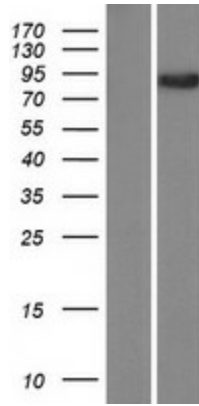
MW: 83.6 kDa

Gene Summary: Via its association with the multisubunit axonemal dynein complex, is potentially involved in the regulation of cilia function. May also act as a cell cycle regulator.[UniProtKB/Swiss-Prot Function]

Product images:



Circular map for RC223815



Western blot validation of overexpression lysate (Cat# [LY413168]) using anti-DDK antibody (Cat# [TA50011-100]). Left: Cell lysates from untransfected HEK293T cells; Right: Cell lysates from HEK293T cells transfected with RC223815 using transfection reagent MegaTran 2.0 (Cat# [TT210002]).