

## Product datasheet for **RC223810**

### CRABP1 (NM\_004378) Human Tagged ORF Clone

#### Product data:

**Product Type:** Expression Plasmids  
**Product Name:** CRABP1 (NM\_004378) Human Tagged ORF Clone  
**Tag:** Myc-DDK  
**Symbol:** CRABP1  
**Synonyms:** CRABP; CRABP-I; CRABPI; RBP5  
**Mammalian Cell Selection:** Neomycin  
**Vector:** pCMV6-Entry (PS100001)  
**E. coli Selection:** Kanamycin (25 ug/mL)  
**ORF Nucleotide Sequence:** >RC223810 representing NM\_004378  
Red=Cloning site Blue=ORF Green=Tags(s)

TTTTGTAATACGACTCACTATAGGGCGGCCGGAATTCGTCGACTGGATCCGGTACCGAGGAGATCTGCC  
GCC**CGGATCGCC**

ATGCCCAACTTCGCCGGCACCTGGAAGATGCGCAGCAGCGAGAATTCGACGAGCTGCTCAAGGCACTGG  
GTGTGAACGCCATGCTGAGGAAAGTGGCCGTAGCGGCTGCGTCCAAGCCGCACGTGGAGATCCGCCAGGA  
CGGGGATCAGTTCTACATCAAGACATCCACCACGGTGCACCACTGAGATCAACTTCAAGGTCGGAGAA  
GGCTTTGAGGAGGAGACCGTGGACGGACGCAAGTGCAGGAGTTTAGCCACTTGGGAGAATGAGAACAAGA  
TCCACTGCACGCAAACCTTCTTGAAGGGGACGGCCCCAAAACCTACTGGACCCGTGAGCTGGCCAACGA  
TGAAGTTATCCTGACGTTTGGCGCCGATGACGTGGTCTGCACCAGAATTTATGTCCGAGAG

**ACGCGT**ACGCGGCCGCTCGAGCAGAAACTCATCTCAGAAGAGGATCTGGCAGCAAATGATATCCTGGATT  
ACAAGGATGACGACGATAAGGTTTAA

**Protein Sequence:** >RC223810 representing NM\_004378  
Red=Cloning site Green=Tags(s)  
MPNFAGTWKMRSSNFDELLKALGVNAMLKRVAVAAASKPHVEIRQDGDQFYIKTSTTVRTEINFKVG  
GFEEETVDGRKCRSLATWENENKIHCTQTLLEGDPKTYWTRELANDELILTFGADDVVCTRIYVRE

**TR**TRPLEQKLISEEDLAANDILDYKDDDDKV

**Chromatograms:** [https://cdn.origene.com/chromatograms/mk8046\\_g12.zip](https://cdn.origene.com/chromatograms/mk8046_g12.zip)

**Restriction Sites:** SgfI-MluI



[View online »](#)

**Cloning Scheme:**


**ACCN:** NM\_004378

**ORF Size:** 411 bp

**OTI Disclaimer:** The molecular sequence of this clone aligns with the gene accession number as a point of reference only. However, individual transcript sequences of the same gene can differ through naturally occurring variations (e.g. polymorphisms), each with its own valid existence. This clone is substantially in agreement with the reference, but a complete review of all prevailing variants is recommended prior to use. [More info](#)

**OTI Annotation:** This clone was engineered to express the complete ORF with an expression tag. Expression varies depending on the nature of the gene.

**Components:** The ORF clone is ion-exchange column purified and shipped in a 2D barcoded Matrix tube containing 10ug of transfection-ready, dried plasmid DNA (reconstitute with 100 ul of water).

**Reconstitution Method:**

1. Centrifuge at 5,000xg for 5min.
2. Carefully open the tube and add 100ul of sterile water to dissolve the DNA.
3. Close the tube and incubate for 10 minutes at room temperature.
4. Briefly vortex the tube and then do a quick spin (less than 5000xg) to concentrate the liquid at the bottom.
5. Store the suspended plasmid at -20°C. The DNA is stable for at least one year from date of shipping when stored at -20°C.

**RefSeq:** [NM\\_004378.3](#)

**RefSeq Size:** 735 bp

**RefSeq ORF:** 414 bp

**Locus ID:** 1381

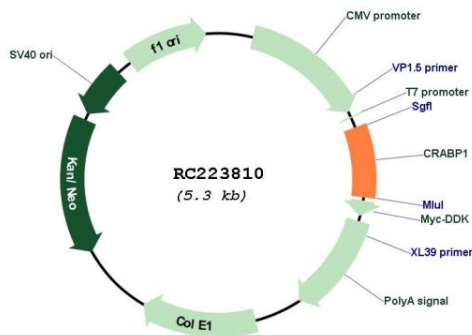
**UniProt ID:** [P29762](#)

**Cytogenetics:** 15q25.1

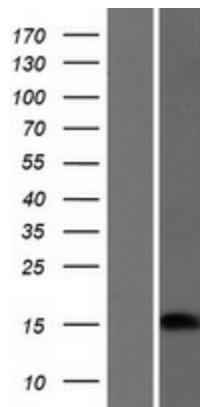
**MW:** 15.4 kDa

**Gene Summary:** This gene encodes a specific binding protein for a vitamin A family member and is thought to play an important role in retinoic acid-mediated differentiation and proliferation processes. It is structurally similar to the cellular retinol-binding proteins, but binds only retinoic acid at specific sites within the nucleus, which may contribute to vitamin A-directed differentiation in epithelial tissue. [provided by RefSeq, Jul 2008]

**Product images:**



Circular map for RC223810



Western blot validation of overexpression lysate (Cat# [LY418032]) using anti-DDK antibody (Cat# [TA50011-100]). Left: Cell lysates from untransfected HEK293T cells; Right: Cell lysates from HEK293T cells transfected with RC223810 using transfection reagent MegaTran 2.0 (Cat# [TT210002]).