

Product datasheet for RC223803

C16orf91 (NM_001010878) Human Tagged ORF Clone

Product data:

Product Type:	Expression Plasmids
Product Name:	C16orf91 (NM_001010878) Human Tagged ORF Clone
Tag:	Myc-DDK
Symbol:	C16orf91
Synonyms:	CCSMST1; gs103
Mammalian Cell Selection:	Neomycin
Vector:	pCMV6-Entry (PS100001)
E. coli Selection:	Kanamycin (25 ug/mL)
ORF Nucleotide Sequence:	>RC223803 representing NM_001010878 Red=Cloning site Blue=ORF Green=Tags(s)

TTTTGTAATACGACTCACTATAGGGCGGCCGGAATTCGTCGACTGGATCCGGTACCGAGGAGATCTGCC
GCC**CGATCGCC**

ATGGGTCTCATGGTGAGGGTGGGGTACCTGCAGGTCCCAGGAAAGGCTGCTGGGAGTGGGGACAGGGA
CAGCATCGGCACAGCCACCAGTTACGGCTTCTCCTTACTGCTCCTTACAGGCAGAAGCCGAGCCGACGC
CCCGCGCGGGCGGCAGGAAATGGCCAGCCAGGCTTCGGCGCAGGTGGACCTCAGCTCGGCCTCGTGC
GTGCTGGTCACTGCTCCTGGACGCCAAGGCTCTGCCCTGACTCTGCTGTCTGGGCAGCTTGTGCGCAA
CTGCCAAAACCAACAACACAGGAAGGTGCACCAGCCAAACCAAGGCTCCATGGCTAACAGAGGGC
CCTTCGATTTCCACCTCCTTACAGGAAGCCCCCTGGGCTGCACACCAGGATGAGGCTGACCAGTCCCTCC
CAACCACACTTTGAGCCCCCTCCTCCACAACAGTGGGTGCTCCCAGGTCCCTACAGGGGACTGGTTTG
GCAGTGATTCCAGGGCCGTCGGGGCGTGAGGCTCATAGGCTGGGCTTCCCGAAGCCTTCATCCGTTGCC
CGGTTCCCGGGATCGGGCCACCCTGCCGCGAGGAAGAGGACGACCCTGACCGCCCATGAGTTTTCC
TCCAGCAAAGCCAACCCTCACCGCTGGTCGGTGGGCCATACCATGGGAAAGGGACATCAGCGCCCTGGT
GGAAGGTGCTGCCCTCAGCTGCTTCTCGTGGCGCTGATCATCTGGTGTACCTGAGGGAGGAGAGCGA
GGCGGACCAGTGGTTGAGACAGGAAGGGAGCCGACAGCCGCCCTTCGGATTTGATGTACGTTTGCCCGT
GACTGCTCCTGGCTATGCGTGCCTCAGCACTGAAGGACTTGGCTGGTGGATGGGGCACTGGCTATGC
TGATTCGCGTGAAGCGGAGCAGAATCTCAGCAGATCGGAAACTGCTCCTCGCCTGCTCTTGATGTCCA
AGGATTCATCGCAAGACTTCTCAGATCCTTGGGGAAGTTTCAGTTGCACTGTATGCTGTTGGATTTG
CCAAGTCTTTGTATAACA

ACGCGTACGCGGCCGCTCGAGCAGAACTCATCTCAGAAGAGGATCTGGCAGCAAATGATATCCTGGATT
ACAAGGATGACGACGATAAGGTTAA



[View online »](#)

Protein Sequence: >RC223803 representing NM_001010878
Red=Cloning site Green=Tags(s)

MGLMVRGGVTCRSQERLLGVGTGTASAQPPVTASPYCSFTGRSRADAPARAAGNGQPRLRAQVDLSSASS
 VLVTVLDAKALPLTLLSWGSLCATAQNHNNQEGAPAQPKGSMANQRALRFPPPSGSPGLHTRMRLTSP
 QPHFEPPTTVGAPRSLQGDWFGSDSRAVRALRLIGWASRSLHPLGSRDRAHPAAEEDDPDRPIEFS
 SSKANPHRWSVGHMTMGKGHRPWWKVLPLSCFLVALIIWCYLREESEADQWLRQEGSRQPPFGFDVTFAR
 DCPGYACVLSTEGLGWWMGHLAMLIRVKAEQNLSRSETAPRLALDVQGFHRQDFSDPWGRFQLHCMLLDL
 PSLCIT

TRTRPLEQKLISEEDLAANDILDYKDDDDKV

Chromatograms: https://cdn.origene.com/chromatograms/mk8046_h05.zip

Restriction Sites: SgfI-MluI

Cloning Scheme:



* The last codon before the Stop codon of the ORF

ACCN: NM_001010878

ORF Size: 1068 bp

OTI Disclaimer: The molecular sequence of this clone aligns with the gene accession number as a point of reference only. However, individual transcript sequences of the same gene can differ through naturally occurring variations (e.g. polymorphisms), each with its own valid existence. This clone is substantially in agreement with the reference, but a complete review of all prevailing variants is recommended prior to use. [More info](#)

OTI Annotation: This clone was engineered to express the complete ORF with an expression tag. Expression varies depending on the nature of the gene.

Components: The ORF clone is ion-exchange column purified and shipped in a 2D barcoded Matrix tube containing 10ug of transfection-ready, dried plasmid DNA (reconstitute with 100 ul of water).

- Reconstitution Method:**
1. Centrifuge at 5,000xg for 5min.
 2. Carefully open the tube and add 100ul of sterile water to dissolve the DNA.
 3. Close the tube and incubate for 10 minutes at room temperature.
 4. Briefly vortex the tube and then do a quick spin (less than 5000xg) to concentrate the liquid at the bottom.
 5. Store the suspended plasmid at -20°C. The DNA is stable for at least one year from date of shipping when stored at -20°C.

RefSeq: NM_001010878.1, NP_001010878.1

RefSeq Size: 1071 bp

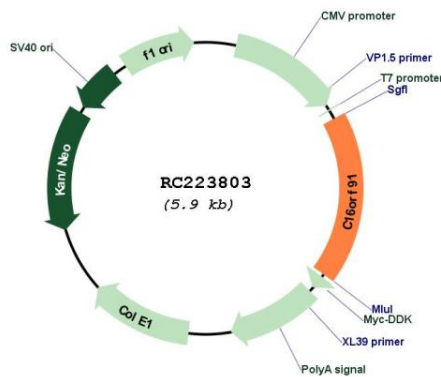
RefSeq ORF: 1070 bp

Locus ID: 283951

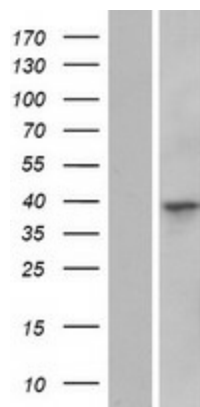
Cytogenetics: 16p13.3

MW: 38.8 kDa

Product images:



Circular map for RC223803



Western blot validation of overexpression lysate (Cat# [LY423203]) using anti-DDK antibody (Cat# [TA50011-100]). Left: Cell lysates from untransfected HEK293T cells; Right: Cell lysates from HEK293T cells transfected with RC223803 using transfection reagent MegaTran 2.0 (Cat# [TT210002]).