

Product datasheet for **RC223798**

CLEC12A (NM_138337) Human Tagged ORF Clone

Product data:

Product Type:	Expression Plasmids
Product Name:	CLEC12A (NM_138337) Human Tagged ORF Clone
Tag:	Myc-DDK
Symbol:	CLEC12A
Synonyms:	CD371; CLL-1; CLL1; DCAL-2; MICL
Mammalian Cell Selection:	Neomycin
Vector:	pCMV6-Entry (PS100001)
E. coli Selection:	Kanamycin (25 ug/mL)
ORF Nucleotide Sequence:	>RC223798 ORF sequence Red=Cloning site Blue=ORF Green=Tags(s)

TTTTGTAATACGACTCACTATAGGGCGGCCGGAATTCGTCGACTGGATCCGGTACCGAGGAGATCTGCC
GCC**CGGATCGCC**

ATGTCTGAAGAAGTTACTTATGCAGATCTTCAATTCAGAACTCCAGTGAGATGGAAAAATCCCAGAAA
TTGGCAAATTTGGGGAAAAAGCACCTCCAGCTCCCTCTCATGTATGGCGTCCAGCAGCCTTGTCTTCTGAC
TCTTCTGTGCTTCTGTTGCTCATTGGATTGGGAGTCTTGGCAAGCATGTTTCACGTAACCTTTGAAGATA
GAAATGAAAAAATGAACAACTACAAAACATCAGTGAAGAGCTCCAGAGAAATATTTCTCTACAACCTGA
TGAGTAACATGAATATCTCCAACAAGATCAGGAACCTCTCCACCACACTGCAACAATAGCCACCAATT
ATGTCGTGAGCTATATAGCAAAGAACAAGAGCACAAATGTAAGCCTTGCCAAGGAGATGGATTTGGCAT
AAGGACAGCTGTTATTTCTAAGTGATGATGTCCAACATGGCAGGAGAGTAAAAATGGCCTGTGCTGCTC
AGAATGCCAGCCTGTTGAAGATAAACAACAAAAATGCATTGGAATTTATAAAATCCCAGAGTAGATCATA
TGACTATTGGCTGGGATTATCTCCTGAAGAAGATTCCACTCGTGGTATGAGAGTGGAATAATAATCAAC
TCCTCTGCCTGGGTTATAAGAAACGCACCTGACTTAAATAACATGTATTGTGGATATAAATAGACTAT
ATGTTCAATATTACTGCACCTATAAACAAGAATGATATGTGAGAAGATGGCCAATCCAGTGACGCT
TGGTCTACATATTTTAGGGAGGCA

ACGCGTACGCGGCCGCTCGAGCAGAACTCATCTCAGAAGAGGATCTGGCAGCAAATGATATCCTGGATT
ACAAGGATGACGACGATAAGGTTTAA



[View online »](#)

Protein Sequence: >RC223798 protein sequence
Red=Cloning site Green=Tags(s)

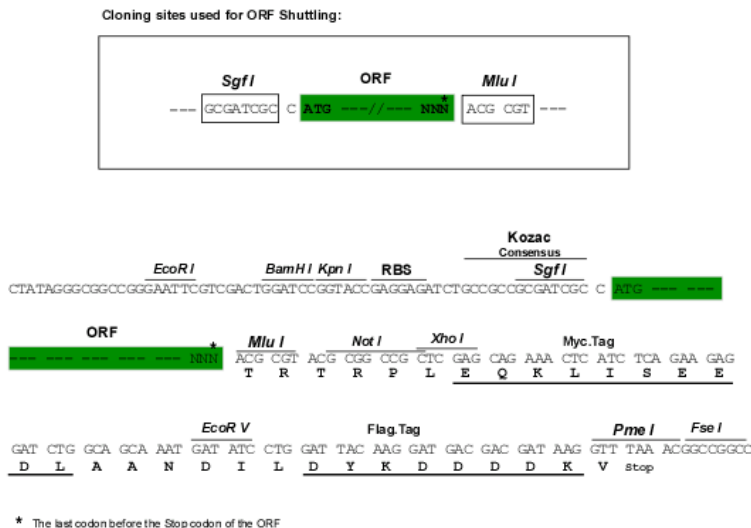
MSEEVTYADLQFQNSSEMEKIPEIGKFGGEKAPPAPSHVWRPAALFLTLLCLLLLIGLGLVLSMFHVTLKI
 EMKKMNKLQNI SEELQRNLSLQLMSNMNINSNKIRNLSTTLQTIATKLCRELYSKEQEHKCKPCPRRWIWH
 KDSCYFLSDDVQVTWQESKMACAAQNASLLKINNKNLEFIKSQRSYDYWLGLSPEEDSTRGMRVDNIIN
 SSAWVIRNAPDLNNMYCGYINRLYVQYHCTYKQRMICEKMANPVQLGSTYFREA

TRTRPLEQKLISEEDLAANDILDYKDDDDKV

Chromatograms: https://cdn.origene.com/chromatograms/mk6465_c03.zip

Restriction Sites: SgfI-MluI

Cloning Scheme:



ACCN: NM_138337

ORF Size: 795 bp

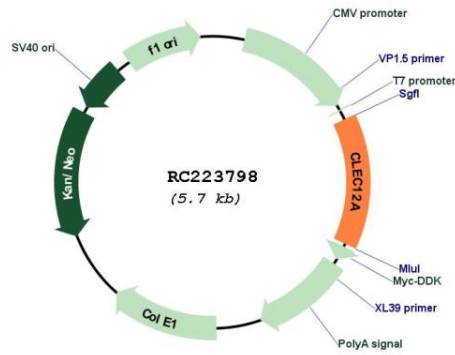
OTI Disclaimer: The molecular sequence of this clone aligns with the gene accession number as a point of reference only. However, individual transcript sequences of the same gene can differ through naturally occurring variations (e.g. polymorphisms), each with its own valid existence. This clone is substantially in agreement with the reference, but a complete review of all prevailing variants is recommended prior to use. [More info](#)

OTI Annotation: This clone was engineered to express the complete ORF with an expression tag. Expression varies depending on the nature of the gene.

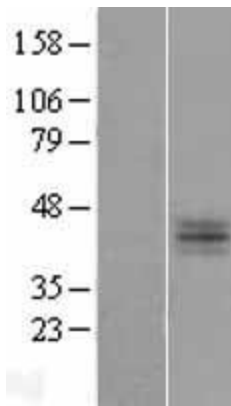
Components: The ORF clone is ion-exchange column purified and shipped in a 2D barcoded Matrix tube containing 10ug of transfection-ready, dried plasmid DNA (reconstitute with 100 ul of water).

Reconstitution Method:	<ol style="list-style-type: none">1. Centrifuge at 5,000xg for 5min.2. Carefully open the tube and add 100ul of sterile water to dissolve the DNA.3. Close the tube and incubate for 10 minutes at room temperature.4. Briefly vortex the tube and then do a quick spin (less than 5000xg) to concentrate the liquid at the bottom.5. Store the suspended plasmid at -20°C. The DNA is stable for at least one year from date of shipping when stored at -20°C.
Note:	Plasmids are not sterile. For experiments where strict sterility is required, filtration with 0.22um filter is required.
RefSeq:	NM_138337.3 , NP_612210.3
RefSeq Size:	1619 bp
RefSeq ORF:	798 bp
Locus ID:	160364
UniProt ID:	Q5QGZ9
Cytogenetics:	12p13.31
Domains:	CLECT
Protein Families:	Druggable Genome, Transmembrane
MW:	30.8 kDa
Gene Summary:	<p>This gene encodes a member of the C-type lectin/C-type lectin-like domain (CTL/CTLD) superfamily. Members of this family share a common protein fold and have diverse functions, such as cell adhesion, cell-cell signaling, glycoprotein turnover, and roles in inflammation and immune response. The protein encoded by this gene is a negative regulator of granulocyte and monocyte function. Several alternatively spliced transcript variants of this gene have been described, but the full-length nature of some of these variants has not been determined. This gene is closely linked to other CTL/CTLD superfamily members in the natural killer gene complex region on chromosome 12p13. [provided by RefSeq, May 2011]</p>

Product images:



Circular map for RC223798



Western blot validation of overexpression lysate (Cat# [LY408615]) using anti-DDK antibody (Cat# [TA50011-100]). Left: Cell lysates from untransfected HEK293T cells; Right: Cell lysates from HEK293T cells transfected with RC223798 using transfection reagent MegaTran 2.0 (Cat# [TT210002]).