

Product datasheet for **RC223796**

TRIM32 (NM_001099679) Human Tagged ORF Clone

Product data:

| | |
|---------------------------|--|
| Product Type: | Expression Plasmids |
| Product Name: | TRIM32 (NM_001099679) Human Tagged ORF Clone |
| Tag: | Myc-DDK |
| Symbol: | TRIM32 |
| Synonyms: | BBS11; HT2A; LGMD2H; LGMDR8; TATIP |
| Mammalian Cell Selection: | Neomycin |
| Vector: | pCMV6-Entry (PS100001) |
| E. coli Selection: | Kanamycin (25 ug/mL) |



[View online »](#)

ORF Nucleotide
Sequence:

>RC223796 ORF sequence
Red=Cloning site Blue=ORF Green=Tags(s)

TTTTGTAATACGACTCACTATAGGGCGGCCGGAATTCGTCGACTGGATCCGGTACCGAGGAGATCTGCC
GCCGCGATCGCC

ATGGCTGCAGCAGCAGCTTCTCACCTGAACCTGGATGCCCTCCGGAAGTCTAGAAATGCCCATCTGCA
TGGAGTCCTTACAGAAGAGCAGCTGCGTCCCAAGCTTCTGCACTGTGGCCATACCATCTGCCGCCAGTG
CCTGGAGAAGCTATTGGCCAGTAGCATCAATGGTGTCCGCTGTCCCTTTTGCAGCAAGATTACCCGCATA
ACCAGCTTGACCCAGCTGACAGACAATCTGACAGTGCTAAAGATCATTGATACAGCTGGGCTCAGCGAGG
CTGTGGGGCTGCTCATGTGTCCGCTCCTGTGGGCGCGTCTGCCCGGCAATTCTGCCGGAGCTGTGGTTT
GGTGTTATGTGAGCCCTGCCGGGAGGCAGACCATCAGCCTCCTGGCCACTGTACACTCCCTGTCAAAGAA
GCAGCTGAGGAGCGGCTCGGGACTTTGGAGAGAAGTAACTCGTCTGCGGGAATTATGGGGGAGCTGC
AGCGGCGGAAGGCAGCCTTGAAGGTGTCTCAAGGACCTTCAGGCAAGGTATAAAGCAGTTCTCCAGGA
GTATGGGCATGAGGAGCGCAGGGTCCAGGATGAGCTGGCTCGCTCTCGGAAGTTCTTACAGGCTCTTTG
GCTGAAGTTGAGAAGTCCAATAGTCAAGTGGTAGAGGAGCAGAGTTACCTGCTTAAACATTGCAGAGGTGC
AGGCTGTGTCTCGCTGTGACTACTTCTGGCCAAGATCAAGCAGGCAGATGTAGCACTACTGGAGGAGAC
AGCTGATGAGGAGGAGCCAGAGCTCACTGCCAGCTTGCCTCGGGAGCTCACCCCTGCAAGATGTGGAGCTC
CTTAAGGTAGGTGATGTTGGCCCCCTCAAATTGGACAAGCTGTTAAGAAGCCCCGGACAGTTAACCTGG
AAGATTCTGGGCCATGGAGGCCACAGCGTCTGCTGCCTACCTCTGTTACTTTTAGAGAGATGGACAT
GAGCCCCGAGGAAGTGGTTGCCAGCCCTAGGGCCTCACCTGCTAAACAGCGGGTCTGAGGCAGCCTCC
AATATCCAGCAGTGCCTCTTCTCAAGAAGATGGGGCCAAAGGCAGCACTCCAGGAATGTTCAATCTTC
CAGTCAGTCTCTACGTGACCAGTCAAGGTGAAGTACTAGTCGCTGACCGTGGTAACATCGTATACAAGT
CTTTACCCGCAAAGGCTTTTTGAAGGAAATCCGCGCAGCCCCAGTGGCATTGATAGCTTTGTGCTAAGC
TTCCTTGGGGCAGATCTACCCAACCTCACTCCTCTCAGTGGCAATGAACTGCCAGGGGCTGATTGGTG
TGACTGACAGCTATGATAACTCCCTCAAGGTATATACCTTGGATGGCCACTGCGTGGCCTGTACAGGAG
CCAGCTGAGCAAACCATGGGGTATCACAGCCTTGCCATCTGGCCAGTTTGTAGTAACCGATGTGGAAGGT
GGAAAGCTTTGGTGTTCACAGTTGATCGAGGATCAGGGGTGGTCAAATACAGCTGCCTATGTAGTGCTG
TGCGGCCCAAATTTGTCACCTGTGATGCTGAGGGCACCGTCTACTTCACCCAGGGCTTAGGCCTCAATCT
GGAGAATCGGCAGAATGAGCACCACTGGAGGGTGGCTTTCCATTGGCTCTGTAGGCCCTGATGGGCAG
CTGGGTGCCAGATTAGCCACTTCTTCTCGGAGAATGAGGATTTCCGCTGCATTGCTGGCATGTGTGTGG
ATGCTCGTGGTATCTCATCGTGGCTGACAGTAGTCGCAAGGAAATTCTCATTTCCTAAGGGTGGGGG
CTATAGTGTCTTATTGAGAGGGACTTACCTGTCCGGTGGGCATAGCCCTAACTCCTAAGGGGCAGCTG
CTGGTCTTGGACTGTTGGGATCATTGCATCAAGATCTACAGCTACCATCTGAGAAGATATCCACCCCA

ACGCGTACGCGGCCGCTCGAGCAGAACTCATCTCAGAAGAGGATCTGGCAGCAAATGATATCCTGGATT
ACAAGGATGACGACGATAAGGTTTAA

Protein Sequence: >RC223796 protein sequence
 Red=Cloning site Green=Tags(s)

MAAAAASHLNDALREVLECPICMESFTEEQLRPKLLHCGHTICRQCLEKLLASSINGVRCPCFSKITRI
 TSLTQLTDNLTVLKIIDTAGLSEAVGLLMCRSCGRRLPRQFCRSCGLVLCEPCREADHQPPGHCTLPVKE
 AAERRRDFGEKLRRLMELQRRKAALGVSKDLQARYKAVLQYEGHEERRVQDELARSKFFTGSL
 AEVEKSNSQVVEEQSYLLNIAEVQAVSRCDYFLAKIKQADVALLEETADEEPELTASLPRELTLDQVEL
 LKVGHVGPLQIGQAVKPRPTVNVEDSWAMEATASAASTSVTFREMDMSPEEVVASPRASPAKQRGPEAAS
 NIQQCLFLKMGAKGSTPGMFLPVSLYVTSQGEVLVADRGNYRIQVFTKGFLEIRRSPSGIDSFVLS
 FLGADLPNLTPLSVAMNCQGLIGVTDSDYNSLKVYTLGDGHCVACHRSQLSKPWGITALPSGQFVVTDVEG
 GKLCWFTVDRGSGVVKYSCLCSAVRPKFVTCDAEGTVYFTQGLNLENRQNEHHEGGFISGIVGPDGQ
 LGRQISHFFSENEFRCIAGMCDARGDLIVADSSRKEILHFPKGGGYSVLIREGLTCPVGIALTPKQQL
 LVLDWCWDHCIKIYSYHLRRYSTP

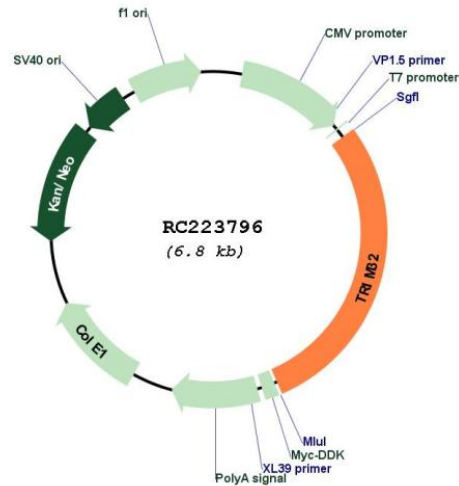
TRTRPLEQKLISEEDLAANDILDYKDDDDKV

Chromatograms: https://cdn.origene.com/chromatograms/mk6150_e01.zip

Restriction Sites: SgfI-MluI

Cloning Scheme:



Plasmid Map:


ACCN: NM_001099679

ORF Size: 1959 bp

OTI Disclaimer: The molecular sequence of this clone aligns with the gene accession number as a point of reference only. However, individual transcript sequences of the same gene can differ through naturally occurring variations (e.g. polymorphisms), each with its own valid existence. This clone is substantially in agreement with the reference, but a complete review of all prevailing variants is recommended prior to use. [More info](#)

OTI Annotation: This clone was engineered to express the complete ORF with an expression tag. Expression varies depending on the nature of the gene.

Components: The ORF clone is ion-exchange column purified and shipped in a 2D barcoded Matrix tube containing 10ug of transfection-ready, dried plasmid DNA (reconstitute with 100 ul of water).

Reconstitution Method:

1. Centrifuge at 5,000xg for 5min.
2. Carefully open the tube and add 100ul of sterile water to dissolve the DNA.
3. Close the tube and incubate for 10 minutes at room temperature.
4. Briefly vortex the tube and then do a quick spin (less than 5000xg) to concentrate the liquid at the bottom.
5. Store the suspended plasmid at -20°C. The DNA is stable for at least one year from date of shipping when stored at -20°C.

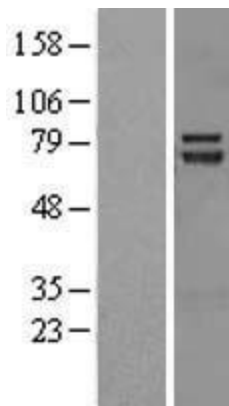
RefSeq: [NM_001099679.2](#)

RefSeq Size: 3731 bp

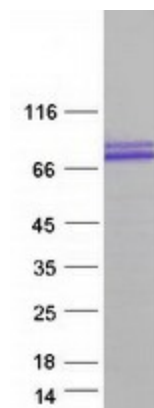
RefSeq ORF: 1962 bp
Locus ID: 22954
UniProt ID: [Q13049](#)
Cytogenetics: 9q33.1
Protein Families: Transcription Factors
Protein Pathways: Ubiquitin mediated proteolysis
MW: 72 kDa

Gene Summary: The protein encoded by this gene is a member of the tripartite motif (TRIM) family. The TRIM motif includes three zinc-binding domains, a RING, a B-box type 1 and a B-box type 2, and a coiled-coil region. The protein localizes to cytoplasmic bodies. The protein has also been localized to the nucleus, where it interacts with the activation domain of the HIV-1 Tat protein. The Tat protein activates transcription of HIV-1 genes. [provided by RefSeq, Jul 2008]

Product images:



Western blot validation of overexpression lysate (Cat# [LY420491]) using anti-DDK antibody (Cat# [TA50011-100]). Left: Cell lysates from untransfected HEK293T cells; Right: Cell lysates from HEK293T cells transfected with RC223796 using transfection reagent MegaTran 2.0 (Cat# [TT210002]).



Coomassie blue staining of purified TRIM32 protein (Cat# [TP323796]). The protein was produced from HEK293T cells transfected with TRIM32 cDNA clone (Cat# RC223796) using MegaTran 2.0 (Cat# [TT210002]).