

Product datasheet for RC223795

GPR34 (NM_001097579) Human Tagged ORF Clone

Product data:

Product Type:	Expression Plasmids
Product Name:	GPR34 (NM_001097579) Human Tagged ORF Clone
Tag:	Myc-DDK
Symbol:	GPR34
Synonyms:	LYPSR1
Mammalian Cell Selection:	Neomycin
Vector:	pCMV6-Entry (PS100001)
E. coli Selection:	Kanamycin (25 ug/mL)
ORF Nucleotide Sequence:	>RC223795 ORF sequence Red=Cloning site Blue=ORF Green=Tags(s)

TTTTGTAATACGACTCACTATAGGGCGCCGGGAATTCGTCGACTGGATCCGGTACCGAGGAGATCTGCC
GCCCGGATCGCC

ATGAGAAGTCATACCATAACAATGACGACAACCTCAGTCAGCAGCTGGCCTTACTCCTCCCACAGAATGC
GCTTTATAACCAATCATAGCGACCAACCGCCACAAAACCTCTCAGCAACACCAAATGTTACTACCTGTCC
CATGGATGAAAAATTGCTATCTACTGTGTTAACCCACATCTACTCTGTTATTTTCATCGTGGGACTGTT
GGGAACATAATCGCCCTCTATGTATTTCTGGGTATTCACCGTAAAAGAAATTCATTCAAATTTATCTAC
TTAACGTAGCCATTGCAGACCTCTACTCATCTTCTGCCTCCCTTCCGAATAATGTATCATATTAACCA
AAACAAGTGGACACTAGGTGTGATTCTGTGCAAGGTTGTGGGAACACTGTTTTATGAACATGTACATT
AGCATTATTTTGCTTGGATTCATCAGTTTGGATCGCTATATAAAAATTAATCGGTCTATACAGCAACGGA
AGGCAATAACAACCAACAAAGTATTTATGTCTGTTGTATAGTATGGATGCTTGGTGGATTCTCT
AACTATGATTATTTTAACTTAAGAAAGGAGGGCATAATCCACAATGTGTTCCATTACAGAGATAAG
CATAACGCAAAAGGAGAAGCCATTTTAACTTCATTCTTGGTAATGTTCTGGCTAATTTTCTTACTAA
TAATCCTTTCATATTAAGATTGGGAAGAATCTATTGAGGATTCTAAAAGGAGGTCAAATTTCTCTAA
TTCTGGTAAATATGCCACTACAGCTCGTAACTCCTTATTGTACTTATCATTTTTACTATATGTTTTGTT
CCCTATCATGCCCTTCGATTTCATCTACATTTCTCACAGCTAAATGTATCATCTTGCTACTGGAAGAAA
TTGTTACAAAACCAATGAGATCATGCTGGTCTCTCATCTTTCAATAGTTGCTTAGATCCAGTCATGTA
TTTCTGATGTCCAGTAACATTCGCAAAAATAATGTGCCAACTCTTTTTAGACGATTTCAAGGTGAACCA
AGTAGGAGTGAAAGCACTTCAGAATTTAAACCAGGATACTCCCTGCATGATACATCTGTGCCAGTGAAAA
TACAGTCTAGTTCTAAAAGTACT

ACGCGTACGCGGCCGCTCGAGCAGAAAACCTCATCTCAGAAGAGGATCTGGCAGCAAATGATATCCTGGATT
ACAAGGATGACGACGATAAGGTTTAA



[View online »](#)

Protein Sequence: >RC223795 protein sequence
Red=Cloning site Green=Tags(s)

MRSHTITMTTTSVSSWPYSSHRMRFITNHSQPPQNF SATPNVTTCPMDEKLLSTVLTTSYSVIFIVGLV
 GNIIALYVFLGIHRKRNSIQIYLLNVAIADLLIFCLPFRIMYHINQNKWTLGVILCKVVGTLFYMNYI
 SIILLGFISLDRYIKINRSIQQRKAITTKQSIYVCCIVWMLALGGFLTMIILTLKKGHNSTMCFHNRD
 HNAKGEAIFNFILVVMFWLIFLLIILSYIKIGKNLLRISKRRSKFPNSGKYATTARN SFIVLIIFTICFV
 PYHAFRFIYISSQLNVSSCYWKEIVHKTNEIMLVLSFFNSCLDPVVMYFLMSSNIRKIMCQLLFRRFQGE
 SRSESTSEFKPGYSLHDT SVAVKIQSSSKST

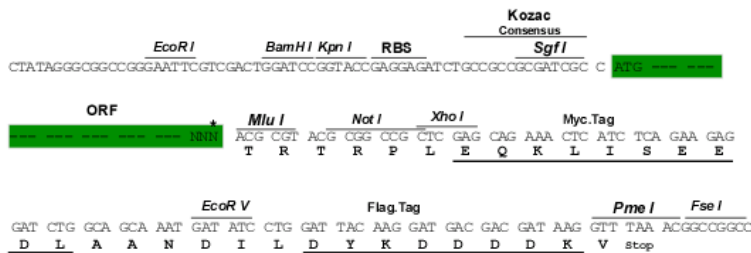
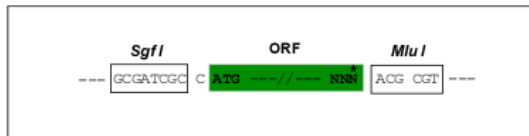
TRTRPLEQKLISEEDLAANDILDYKDDDDKV

Chromatograms: https://cdn.origene.com/chromatograms/mk6069_c10.zip

Restriction Sites: SgfI-MluI

Cloning Scheme:

Cloning sites used for ORF Shuttling:



* The last codon before the Stop codon of the ORF

ACCN: NM_001097579

ORF Size: 1143 bp

OTI Disclaimer: The molecular sequence of this clone aligns with the gene accession number as a point of reference only. However, individual transcript sequences of the same gene can differ through naturally occurring variations (e.g. polymorphisms), each with its own valid existence. This clone is substantially in agreement with the reference, but a complete review of all prevailing variants is recommended prior to use. [More info](#)

OTI Annotation: This clone was engineered to express the complete ORF with an expression tag. Expression varies depending on the nature of the gene.

Components: The ORF clone is ion-exchange column purified and shipped in a 2D barcoded Matrix tube containing 10ug of transfection-ready, dried plasmid DNA (reconstitute with 100 ul of water).

Reconstitution Method:

1. Centrifuge at 5,000xg for 5min.
2. Carefully open the tube and add 100ul of sterile water to dissolve the DNA.
3. Close the tube and incubate for 10 minutes at room temperature.
4. Briefly vortex the tube and then do a quick spin (less than 5000xg) to concentrate the liquid at the bottom.
5. Store the suspended plasmid at -20°C. The DNA is stable for at least one year from date of shipping when stored at -20°C.

RefSeq: [NM_001097579.2](#)

RefSeq Size: 1938 bp

RefSeq ORF: 1146 bp

Locus ID: 2857

UniProt ID: [Q9UPC5](#)

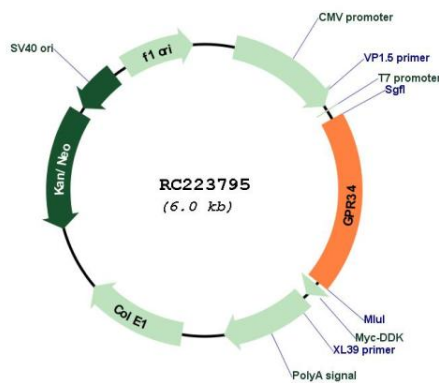
Cytogenetics: Xp11.4

Protein Families: Druggable Genome, GPCR, Transmembrane

MW: 43.9 kDa

Gene Summary: G protein-coupled receptors (GPCRs), such as GPR34, are integral membrane proteins containing 7 putative transmembrane domains (TMs). These proteins mediate signals to the interior of the cell via activation of heterotrimeric G proteins that in turn activate various effector proteins, ultimately resulting in a physiologic response.[supplied by OMIM, Apr 2006]

Product images:



Circular map for RC223795