

Product datasheet for **RC223791**

PRMT5 (NM_001039619) Human Tagged ORF Clone

Product data:

Product Type:	Expression Plasmids
Product Name:	PRMT5 (NM_001039619) Human Tagged ORF Clone
Tag:	Myc-DDK
Symbol:	PRMT5
Synonyms:	HRMT1L5; HSL7; IBP72; JBP1; SKB1; SKB1Hs
Mammalian Cell Selection:	Neomycin
Vector:	pCMV6-Entry (PS100001)
E. coli Selection:	Kanamycin (25 ug/mL)



[View online »](#)

ORF Nucleotide Sequence:

>RC223791 representing NM_001039619
 Red=Cloning site Blue=ORF Green=Tags(s)

TTTTGTAATACGACTCACTATAGGGCGGCCGGGAATTCGTCGACTGGATCCGGTACCGAGGAGATCTGCC
 GCC**CGGATCGCC**

ATCGGGGTCGAACTCGGGACGAGAAGGGCAGACTAGTCATCCCGGAGAAGCAGGGTTTGATTCC
 TCTGCATGCCTGTCTCCATCCGCGTTTCAAGAGGGAGTTCAATCAGGAACCTGCTAAGAATCGGCCCGG
 TCCCCAGACACGATCAGACCTACTGCTGTCCAGGAAGGACTGGAATACGCTAATTGTGGGAAAGCTTTCT
 CCATGGATTGTCAGACTCAAAAGTGGAGAAGATTTCGAGGAACCTCCGAGGCGGCCATGTTACAGGAGC
 TGAATTTTGGTGCATATTTGGGTCTTCCAGCTTTCCTGCTGCCCTTAATCAGGAAGATAACACCAACCT
 GGCCAGAGTTTGGACCAACCACATCCACACTGGCCATCACTCTTCCATGTTCTGGATGCGGGTACCTTGT
 GTGGCACCAGAGGACCTGAGAGATGATAAATTGAGAATGCACCAACTACACACACAGAGGAGTACAGTG
 GGGAGGAGAAAACGTGGATGTGGTGGCACAACCTCCGGACTTTGTGTGACTATAGTAAGAGGATTGCAGT
 GGCTCTTGAAATTGGGGCTGACCTCCCATCTAATCATGTCATTGATCGCTGGCTTGGGGAGCCCATCAA
 GCAGCCATTCTCCCACTAGCATTTCCTGACCAATAAGAAGGGATTTCTGTCTTTCTAAGATGCACC
 AGAGGCTCATCTCCGGCTCCTCAAGTTGGAGGTGCAGTTCATCATCACAGGCACCAACCACCACTCAGA
 GAAGGAGTTCTGCTCCTACCTCCAATACCTGGAATACTTAAGCCAGAACCCTCCTCCACCTAATGCCTAT
 GAACTCTTTGCCAAGGGCTATGAAGACTATCTGCAGTCCCGCTTCAGCCACTGATGGACAATCTGGAAT
 CTCAGACATATGAAGTGTGTTGAAAAGGACCCCATCAAATACTCTCAGTACCAGCAGGCCATCTATAAATG
 TCTGCTAGACCGAGTACCAGAAGAGGAGAAGGATACCAATGTCCAGGACTGATGGTGTGGGAGCAGGA
 CGGGGACCCCTGGTGAACGCTTCCCTGCGGGCAGCCAAGCAGGCCGACCGGGGATAAAGCTGTATGCTG
 TGGAGAAAAACCAATGCCGTGGTACGCTAGAGAAGTGCAGTTTGAAGAATGGGGAAGCCAAGTGCAG
 CGTAGTCTCATCAGACATGAGGGAATGGGTGGCTCCAGAGAAAGCAGACATCATTGTGAGTGGCTTCTG
 GGCTCATTGCTGACAATGAATTGTCGCTGAGTGCCTGGATGGAGCCAGCACTTCTAAAAGATGATG
 GTGTGAGCATCCCGGGGAGTACACTTCTTTCTGGCTCCCATCTCTTCTCCAAGCTGTACAATGAGGT
 CCGAGCCTGTAGGGAGAAGGACCGTGACCCTGAGGCCAGTTTGAGATGCCTTATGTGGTACGGCTGCAC
 AACTTCCACCAGCTCTCTGCACCCAGCCCTGTTTACCTTCAGCCATCCCAACAGAGATCCTATGATTG
 ACAACAACCGCTATTGCACCTTGAATTTCTGTGGAGGTGAACACAGTACTACATGGCTTTGCCGGCTA
 CTTTGAGACTGTGCTTATCAGGACATCACTCTGAGTATCCGTCCAGAGACTCACTCTCCTGGGATGTC
 TCATGGTTTCCATCCTTCCCTATTAAGCAGCCATAACGGTACGTGAAGGCCAAACCATCTGTGTGC
 GTTCTGCGGATGCAGCAATCCAAGAAGGTGTGGTATGAGTGGGCTGTGACAGCACCAGTCTGTTCTGC
 TATTCATAAACCACAGGCCGCTCATATACCATTGGCCTC

ACGCGTACGCGGCCGCTCGAGCAGAACTCATCTCAGAAGAGGATCTGGCAGCAATGATATCCTGGATT
 ACAAGGATGACGACGATAAGGTTTAA

Protein Sequence:

>RC223791 representing NM_001039619
 Red=Cloning site Green=Tags(s)

MRGPNSTGTEKGRLLVIPEKQGFDFLCMPVFHPRFKREFIQEPAKNRPQPQTRSDLLL SGRDWNTLIVGKLS
 PWIRPDSKVEKIRRNSEAAMLQELNFGAYLGLPAFLPLNQEDNTNLARVL TNHIHTGHSSMFWMRVPL
 VAPEDLRDDIENAPTTHTTEYSGEKTMWWHNFRTLCDYSKRIAVALEIGADLPSNHVIDRWLGEPIK
 AAILPTSIFLTNKKGFPVLSKMHQRLIFRLLKLEVOFIIITGTNHHSEKEFCSYLQYLEYLSQNRPPPNAY
 ELFAKGYEDYLQSPLQPLMDNLESQTYEVFEKDPKYSQYQQAIIYKCLLDRVPEEEKDTNVQVLMVLGAG
 RGPLVNASLRAAQADRRKLYAVEKNPNAVVTLENWQFEEWGSQVTVVSSDMREWVAPEKADIIIVSELL
 GSFADNELSPECLDGAQHFLKDDGVSIPGEYTSFLAPISSSKLYNEVRACREKDRDPEAQFEMPYVVRHL
 NFKQLSAPQPCFTF SHPNRDP MIDNRYCTLEFPVEVNTVLHGFAGYFETVLYQDITLSIRPETHSPGMF
 SWFPILFPIKQPI TVREGQ TICVRFWRCSNSKKVWYEWAVTAPVCSAIHNPTGRSYTIGL

TRTRPLEQKLISEEDLAANDILDYKDDDDKV

Chromatograms: https://cdn.origene.com/chromatograms/mk8070_b02.zip

Restriction Sites: SgfI-MluI

Cloning Scheme:



ACCN: NM_001039619

ORF Size: 1860 bp

OTI Disclaimer: The molecular sequence of this clone aligns with the gene accession number as a point of reference only. However, individual transcript sequences of the same gene can differ through naturally occurring variations (e.g. polymorphisms), each with its own valid existence. This clone is substantially in agreement with the reference, but a complete review of all prevailing variants is recommended prior to use. [More info](#)

OTI Annotation: This clone was engineered to express the complete ORF with an expression tag. Expression varies depending on the nature of the gene.

Components: The ORF clone is ion-exchange column purified and shipped in a 2D barcoded Matrix tube containing 10ug of transfection-ready, dried plasmid DNA (reconstitute with 100 ul of water).

Reconstitution Method:

1. Centrifuge at 5,000xg for 5min.
2. Carefully open the tube and add 100ul of sterile water to dissolve the DNA.
3. Close the tube and incubate for 10 minutes at room temperature.
4. Briefly vortex the tube and then do a quick spin (less than 5000xg) to concentrate the liquid at the bottom.
5. Store the suspended plasmid at -20°C. The DNA is stable for at least one year from date of shipping when stored at -20°C.

RefSeq: [NM_001039619.3](#)

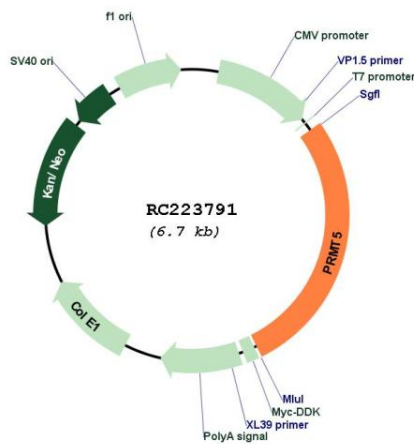
RefSeq Size: 2470 bp

RefSeq ORF: 1863 bp

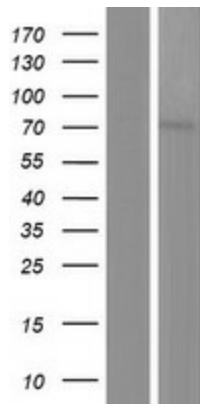
Locus ID: 10419
UniProt ID: [O14744](#)
Cytogenetics: 14q11.2
Protein Families: Stem cell - Pluripotency
MW: 71.1 kDa

Gene Summary: This gene encodes an enzyme that belongs to the methyltransferase family. The encoded protein catalyzes the transfer of methyl groups to the amino acid arginine, in target proteins that include histones, transcriptional elongation factors and the tumor suppressor p53. This gene plays a role in several cellular processes, including transcriptional regulation, and the assembly of small nuclear ribonucleoproteins. A pseudogene of this gene has been defined on chromosome 4. Alternative splicing results in multiple transcript variants encoding different isoforms. [provided by RefSeq, Sep 2015]

Product images:



Circular map for RC223791



Western blot validation of overexpression lysate (Cat# [LY422095]) using anti-DDK antibody (Cat# [TA50011-100]). Left: Cell lysates from untransfected HEK293T cells; Right: Cell lysates from HEK293T cells transfected with RC223791 using transfection reagent MegaTran 2.0 (Cat# [TT210002]).