

Product datasheet for RC223785

ATP11A (NM_032189) Human Tagged ORF Clone

Product data:

Product Type:	Expression Plasmids
Product Name:	ATP11A (NM_032189) Human Tagged ORF Clone
Tag:	Myc-DDK
Symbol:	ATP11A
Synonyms:	ATPIH; ATPIS
Mammalian Cell Selection:	Neomycin
Vector:	pCMV6-Entry (PS100001)
E. coli Selection:	Kanamycin (25 ug/mL)
ORF Nucleotide Sequence:	>RC223785 representing NM_032189 Red=Cloning site Blue=ORF Green=Tags(s)

TTTTGTAATACGACTCACTATAGGGCGCCGGGAATTCGTCGACTGGATCCGGTACCGAGGAGATCTGCC
GCC**CGATCGCC**

ATGGACTGCAGCCTCGTGCGGACGCTCGTGCACAGATACTGTGCAGGAGAAGAGAATTGGGTGGACAGCA
GGACCATCTACGTGGGACACAGGGAGCCACCTCCGGGCGCAGAGGCCTACATCCCACAGAGATACCCAGA
CAACAGGATCGTCTCGTCCAAGTACACATTTTGGAACTTTATACCCAAGAATTTATTTGAACAATTCAGA
AGAGTAGCCAACTTTTTCTTATCATATTTCTGGTGCAGTTGATTATTGATACCCACAAGTCCAG
TGACAAGCGGACTTCCACTCTTCTTTGTCATTACTGTGACGGCTATCAAACAGGGTTATGAAGACTGGCT
TCGACATAAAGCAGACAATGCCATGAACCAAGTGTCTGTTTCATTTTCATTACGACCGCAAGCTCGTTCGG
AAACAAAGTCGAAAGCTGCGAGTTGGGGACATTGTCATGGTTAAGGAGGACGAGACCTTTCCCTGCGACT
TGATCTTCTTTCCAGCAACCGGGGAGATGGGACGTGCCACGTCACCACCGCCAGCTTGGATGGAGAATC
CAGCCATAAAACGCATTACGCGGTCCAGGACACCAAAAGCTTCCACACAGAGGAGGATATCGGCGGACTT
CACGCCACCATCGAGTGTGAGCAGCCCCAGCCGACCTTACAAGTTCGTGGTTCGCATCAACGTTTACA
GTGACCTGAATGACCCCGTGGTGAAGCCCTTAGGATCGGAAAACCTGTGCTTAGAGGAGCTACACTGAA
GAACACTGAGAAAATCTTTGGTGTGGCTATTTACACGGGAATGAAAACCAAGATGGCATTAAATATCAA
TCAAAAATCTCAGAAGCGATCTGCCGTGGAAAAATCGATGAATGCGTTCCTCATTGTGTATCTCTGCATTC
TGATCAGCAAAGCCCTGATAAACACTGTGCTAAAATACGTGTGGCAGAGTGAGCCCTTCCGGGATGAGCC
GTGGTATAATCAGAAAACGGAGTCGAAAAGGCAGAGGAATCTGTTCTCAAGGCATTACGGACTTCTCTG
GCCTTCATGGTCTCTTTAACTACATCATCCCTGTGTCCATGTACGTACGGTTCGAGATGCAGAAGTTCC
TCGGCTTACTTTCATCACCTGGGACGAAGACATGTTTGACGAGGAGACTGGCGAGGGCCCTCTGGTGAA
CACGTCGGACCTCAATGAAGAGCTGGGACAGGTGGAGTACATCTTACAGACAAGACCGGCACCCTCACG
GAAAACAACATGGAGTTCAAGGAGTGTGCATCGAAGGCCATGTCTACGTGCCCCACGTCATCTGCAACG
GGCAGGTCTCCAGAGTCGTGAGGAATCGACATGATTGACTCGTCCCCACGTCACCGGAGGGAGCG
CGAGGAGCTGTTTTCCGGGCCCTGTCTCTGCCACACCGTCCAGGTGAAAGACGATGACAGCGTAGAC



[View online »](#)

GGCCCCAGGAAATCGCCGACGGGGGAAATCCTGTGTGTACATCTCATCTCGCCCGACGAGGTGGCGC
TGGTCTGAAGGTGTCCAGAGACTTGGCTTTACCTACCTAAGGCTGAAGGACAATTACATGGAGATATTA
CAGGGAGAACCACATCGAAAGGTTTGAATTGCTGGAAATTTGAGTTTACTCAGTCAGAAGGAGAATG
AGTGTAATTGTAATACTGCTACAGGAGAAATTTATCTGTTTTGCAAAGGAGCAGATTCTTCGATATTCC
CCCCAGTGATAGAAGGCAAAGTTGACCAGATCCGAGCCAGAGTGGAGCGTAACGCAGTGGAGGGCTCCG
AACTTTGTGTGTGCTTATAAAAGGCTGATCCAAGAAGAATATGAAGGCATTTGTAAGCTGCTGCAGGT
GCCAAAGTGGCCCTTCAAGATCGAGAGAAAAAGTTAGCAGAAGCCTATGAGCAAATAGAGAAAGATCTTA
CTCTGCTTGGTGTCTACAGCTGTTGAGGACCGGCTGCAGGAGAAAGCTGCAGACACCATCGAGGCCCTGCA
GAAGGCCGGGATCAAAGTCTGGTTCTCACGGGAGACAAGATGGAGACGGCCGCGCCACGTGCTACGCC
TGCAAGCTCTTCCGACAGAACACGCAGCTGCTGGAGCTGACCACCAAGAGGATCGAGGAGCAGAGCTGC
ACGACGCTCTGTCGAGCTGAGCAAGACGGTCTGCGCCACAGCGGGAGCCTGACCAGAGACAACCTGTC
CGGACTTTCAGCAGATATGCAGGACTACGGTTAATTATCGACGGAGCTGCACTGTCTCTGATAATGAAG
CCTCGAGAAGACGGGAGTCCGGCAACTACAGGGAGCTTCTGAAATCTGCCGGAGCTGCAGCGCGG
TGCTCTGTGCCCATGGCGCCCTGCAGAAGGCTCAGATTGTTAAATTAATCAAATTTTCAAAGAGCA
CCCAATCAGTTAGCAATTGGCGATGGTCAAATGATGTCAGCATGATTCTGGAAGCGCAGTGGGCATA
GGTGTCTCGGCAAGGAAGGCCCGCAGGCTGCCAGGAACAGCAGCTATGCAATCCCAAAGTTAAGCATT
TGAAGAAGATGCTGCTTGTTCACGGGCATTTTTATTACATTAGGATCTCTGAGCTCGTGCAGTACTTCT
CTATAAGAACGTCTGCTTCTTCCCTCAGTTTTTATACCAGTCTTCTGTGGTTTTTCAACAGACT
TTGTACGACACCGGTATCTGACCCTCTACAACATCAGCTTACCTCCCTCCCATCCTCCTGTACAGCC
TCATGGAGCAGCATGTTGGCATTGACGTGCTCAAGAGAGACCCGACCCTGTACAGGGACGTCGCCAAGAA
TGCCCTGCTGCGCTGGCGGTGTTATCTACTGGACGCTCCTGGGACTGTTTGACGCACTGGTGTCTTC
TTTGGTGTCTATTTCTGTGTTGAAAATACAACGTGACAAGCAACGGGCAGATATTTGAAACTGGACGT
TTGGAACGCTGGTATTCACCGTATGGTGTTCACAGTTACACTAAAGCTTGCAATGGACACACTACTG
GACTTGGATCAACCATTTTGTCTCTGGGGTCTGCTGTTCTACGTTGTCTTTTCGCTTCTCTGGGGA
GGAGTGATCTGGCCGTTCTCAACTACCAGAGGATGTAACGTTCTATCCAGATGCTGTCCAGCGGGC
CCGCTGGCTGGCCATCGTGTGCTGGTACCATCAGCCTCCTTCCCGACGTCCTCAAGAAAGTCTGTG
CCGGCAGCTGTGGCAACAGCAACAGAGAGAGTCCAGAATGGGTGCGCACAGCCTCGGGACCGGACTCA
GAATTCACCCCTTTCCTCTCTGCAGAGCCAGGCTACCAGAGCACCTGTCCCTCGGCCGCTGGTACA
GCTCCCACTCTCAGCAGGTGACTCGCGGCTGGAAGGAGAAGGTGCCACGGAGCCCCACCCATCCT
CGGCGGTTCCCATCACCCTGCACTTCCATCCCAAGTACAGCTGCCCTAGGTCCCGTGTGGGAATGCTC
GTG

ACGCGTACGCGGCCGCTCGAGCAGAACTCATCTCAGAAGAGGATCTGGCAGCAAATGATATCCTGGATT
ACAAGGATGACGACGATAAGGTTTAA

Protein Sequence: >RC223785 representing NM_032189
 Red=Cloning site Green=Tags(s)

```

MDCSLVRTLVHRYCAGEENWVDSRTIYVGHREPPPGAEAYIPQRYPDNRIVSSKYTFWNFIPKNLFEQFR
RVANFYFLIIFLVQLIIDTPTSPVTSGLPLFFVITVTAIKQGYEDWLRHKADNAMNQCPVHFIQHGLVLR
KQSRKLRVGDIVMVKEDETFPCDLIFLSSNRDGTCHVTTASLDGESSHKTHYAVQDTKGFHTEEDIGGL
HATIECEQPQPDLYKFVGRINVYSDLNDPVRPLGSENLLLRGATLKNTEKIFGVAIYTGMEKMLNLYQ
SKSQKRSAYEKSMAFLIYVLCILISKALINTVLKYVWQSEPFREDEPWYNQKTESERQRNLFKAFDFL
AFMVLFNYYIIPVSMYVTVEMQKFLGSYFITWDEDMFDEETGEGPLVNTSDLNEELGQVEYIFTDKTGLT
ENNMEFKECCIEGHVYVPHVICNGQVLPESSGIDMIDSSPSVNGREREELFFRALCLCHTVQVKDDSDVD
GPRKSPDGGKSCVYISSPDEVALVEGVQRLGFTYLRKLDNYEILNRENHIERFELLEILSFDVSRRRM
SVIVKSATGEIYLFCKGADSSIFPRVIEGKVDQIRARVERNAVEGLRTLCAVYKRLIQEEYEGICKLLQA
AKVALQDREKKLAEAYEQIEKDLTLLGATAVEDRLQEKAADTIEALQKAGIKVWVLTDGKMETAAATCYA
CKLFRNTQLLELTTKRIEEQSLHDVLFELSKTVLRHSGSLTRDNL SGLSADMQDYGLIIDGAALSLIMK
PREDGSSGNRELFLIEICRSCSAVLCRMAPLQKAQIVKLIKFSKEHPITLAIGDGANDVSMILEAHVGI
GVIGKEGRQAARNSDYAIPKFKHLKMKLLVGHGFYIRISELVQYFFYKNCVCFIFPQFLYQFFCGFSQQT
LYDTAYLTLYNI SFTSLPILLYSLMEQHVGDVLRDPTLYRDAVNALLRWRVFIYWTLLGLFDALVFF
FGAYFVFENTTTSNGQIFGNWTFGLVFTVMVFTVTLKALDTHYWTWINHFVIWGSLLFYVVSLLWG
GVIWPFNLNYRMYYVFIQMLSSGPAWLAIVLLVTISLLPDVLRKVLQRQLWPTATERVQNGCAQPRDRDS
EFTPLASLQSPGYQSTCPSAAWYSSHSQVTLAAWKEKVESTPEPPILGGSHHCCSSIPSHSCPRSRVGMV
V
  
```

TRTRPLEQKLISEEDLAANDILDYKDDDDKV

Chromatograms: https://cdn.origene.com/chromatograms/mk8011_c10.zip

Restriction Sites: SgfI-MluI

Cloning Scheme:

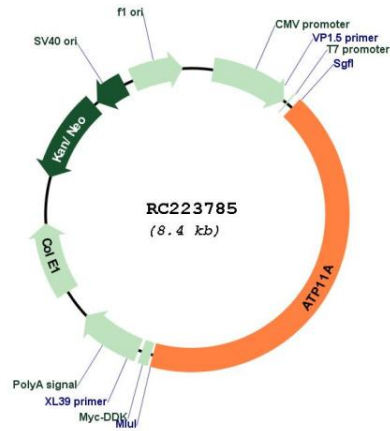


ACCN: NM_032189

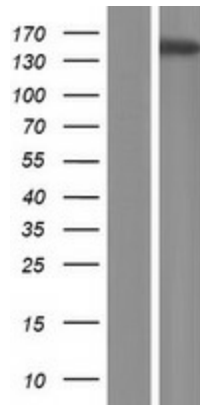
ORF Size: 3573 bp

OTI Disclaimer:	The molecular sequence of this clone aligns with the gene accession number as a point of reference only. However, individual transcript sequences of the same gene can differ through naturally occurring variations (e.g. polymorphisms), each with its own valid existence. This clone is substantially in agreement with the reference, but a complete review of all prevailing variants is recommended prior to use. More info
OTI Annotation:	This clone was engineered to express the complete ORF with an expression tag. Expression varies depending on the nature of the gene.
Components:	The ORF clone is ion-exchange column purified and shipped in a 2D barcoded Matrix tube containing 10ug of transfection-ready, dried plasmid DNA (reconstitute with 100 ul of water).
Reconstitution Method:	<ol style="list-style-type: none">1. Centrifuge at 5,000xg for 5min.2. Carefully open the tube and add 100ul of sterile water to dissolve the DNA.3. Close the tube and incubate for 10 minutes at room temperature.4. Briefly vortex the tube and then do a quick spin (less than 5000xg) to concentrate the liquid at the bottom.5. Store the suspended plasmid at -20°C. The DNA is stable for at least one year from date of shipping when stored at -20°C.
RefSeq:	NM_032189.2 , NP_115565.2
RefSeq Size:	8755 bp
RefSeq ORF:	3576 bp
Locus ID:	23250
UniProt ID:	P98196
Cytogenetics:	13q34
Protein Families:	Transmembrane
MW:	135.7 kDa
Gene Summary:	The protein encoded by this gene is an integral membrane ATPase. The encoded protein is probably phosphorylated in its intermediate state and likely drives the transport of ions such as calcium across membranes. Two transcript variants encoding different isoforms have been found for this gene. [provided by RefSeq, Jul 2008]

Product images:



Circular map for RC223785



Western blot validation of overexpression lysate (Cat# [LY410292]) using anti-DDK antibody (Cat# [TA50011-100]). Left: Cell lysates from untransfected HEK293T cells; Right: Cell lysates from HEK293T cells transfected with RC223785 using transfection reagent MegaTran 2.0 (Cat# [TT210002]).