

Product datasheet for **RC223776**

COL9A2 (NM_001852) Human Tagged ORF Clone

Product data:

Product Type:	Expression Plasmids
Product Name:	COL9A2 (NM_001852) Human Tagged ORF Clone
Tag:	Myc-DDK
Symbol:	COL9A2
Synonyms:	DJ39G22.4; EDM2; MED; STL5
Mammalian Cell Selection:	Neomycin
Vector:	pCMV6-Entry (PS100001)
E. coli Selection:	Kanamycin (25 ug/mL)



[View online »](#)

**ORF Nucleotide
Sequence:**

>RC223776 representing NM_001852
 Red=Cloning site Blue=ORF Green=Tags(s)

TTTTGTAATACGACTCACTATAGGGCGGCCGGGAATTCGTCGACTGGATCCGGTACCGAGGAGATCTGCC
 GCC**CGCATCGCC**

ATGGCCGCGCTACGGCCTCCCCCGCAGCCTCCTTGTCTCCTCCAGGTGGTAGTGCTCGCTCTGGCGC
 AGATTAGAGGTCCACCGGAGAGCGGGGCCCCCGGGTCCCCCGGACCCCGGGAGTGCCTGGATCCGA
 CCGCATCGACGGTGACAATGGGCCCCCTGGAAAAGCTGGCCCTCCGGGACCCAAGGGCGAGCCTGGCAAA
 GCTGGGCCAGATGGGCCAGACGGGAAGCCCGGGATTGATGGTTTAACTGGAGCCAAGGGGGAGCCTGGCC
 CCATGGGGATCCCTGGAGTCAAGGGCCAGCCCGGGCTTCTGGTCTCCTGGCCTCCGGGCCCTGGTTT
 TGCTGGACCTCCTGGCCTCCTGGACCTGTTGGCCTCCCTGGTGAGATTGGAATCCGAGGGCCCAAGGGG
 GACCCTGGACCAGATGGACCATCGGGGCCCCAGGACCCCTGGGAAACCTGGTCGCCCGGGAACCATCC
 AGGGTCTGGAAGGCAGTGCAGTTTCTGTGTCCAACCAACTGTCCACCCGGAATGAAAGTCCCCAGG
 GCTGCAGGGAGTGAAGGGCATCGGGCAAACCGGGATTCTGGGTGATCCTGGCCACCAGGGGAAGCCG
 GGTCCCAAGGGAGATGTGGGTGCCTCTGGAGAGCAAGGCATCCCTGGACCACCGGGTCCCAAGGGCATCA
 GGGGCTACCCAGGCATGGCAGGGCCCAAGGGAGAGACGGGCCCTCATGGATATAAAGGCATGGTGGGCGC
 TATCGGTGCCACTGGGCCACCGGGTGAAGGTCCTAGGGGACCGCCAGGCCGAGCTGGGGAGAAGGGT
 GACGAGGGCAGCCAGGTATTCGTGGACCCAGGGGATCACAGGCCCAAGGAGCAACGGGCCCCCAAG
 GCATCAACGGCAAGGATGGGACCCAGGCACGCCTGGCATGAAGGGCAGTGCAGGACAGGCGGGACAGCC
 CGAAGTCCAGGCCACCAGGGCTAGCGGGTGTGCCAGGCCAGCCTGGGACAAAAGGAGGGCCTGGAGAC
 CAGGGTGAAGCCGGGCCCGCAGGGCCTTCTGGATTCTCTGGTCCCCTGGGAAAGAGGGAGAGCCAGGGC
 CTCGAGGAGAAATTGGTCCCCAGGGCATCATGGGACAGAAGGGTGACCAAGGCGAGAGGGGTCCAGTGGG
 GCAACCAGGCCCTCAGGGAAGGCAGGGCCCTAAGGGGGAGCAGGGCCCCCGGAATTCAGGGCCCCAA
 GGCTTGCCAGGCGTCAAAGGAGACAAGGGCTCCCCAGGGAAGACCGGGGCCCGCGCAAAGTGGGTGACC
 CAGGGGTGGCCGGCTCCCCGGAGAGAAAGGCGAGAAGGGCGAGTCCGGCGAGCCGGGGCCCAAGGGACA
 GCAAGGAGTACGTGGAGAACC GGCTACCCTGGCCCCAGCGGGATGCGGGCGCCCCAGGGGTTCAAGGGC
 TACCCTGGTCCCCCGGCCCTCGAGGACTGGCCGGGAACCGAGGCGTGCCAGGACAGCCGGGAGACAGG
 GCGTGGAGGGCCGGATGCCACTGACCAGCACATCGTGGATGTGGCGTGAAGATGCTGCAAGAGCAACT
 GGCAGAGGTGCGCGTGAAGTGC AAGCGGGAAGCCCTGGGTGCGGTGGGCATGATGGTCTCCAGGACCT
 CCTGGGCCCTGGGTACCCAGGCAAGCAGGGCCCCATGGGCACCTGGCCTCGGGGCTTCTGGCA
 TCGTGGGAGCCGTGGGTGAGATCGGCAACACGGGGCCCAAGGGAAAACGTGGAGAGAAGGGTGTCCAGG
 AGAAGTGGGACGGGGGACCCCGGGATGCCTGGGCCCCCAAGGGATCCAGGACTCCCTGGCCGGCCTGGC
 CAGGCAATCAACGGCAAGGATGGAGATCGAGGGTCCCCAGGGGCTCCAGGAGAGGCAGGTGCACCTGGCC
 TGCCAGGCCCGTGGGGCTGCCGGGCTTCTGTGAACCTGCCGCTGCCTTGGAGCTTCGGCTATGCCTC
 TGCCCGCCTTACAGAGCCTGGATCCATCAAGGGGCT

ACGCGTACGCGGGCGCTCGAGCAGAACTCATCTCAGAAGAGGATCTGGCAGCAATGATATCCTGGATT
 ACAAGGATGACGACGATAAGGTTTAA

Protein Sequence: >RC223776 representing NM_001852
Red=Cloning site Green=Tags(s)

```

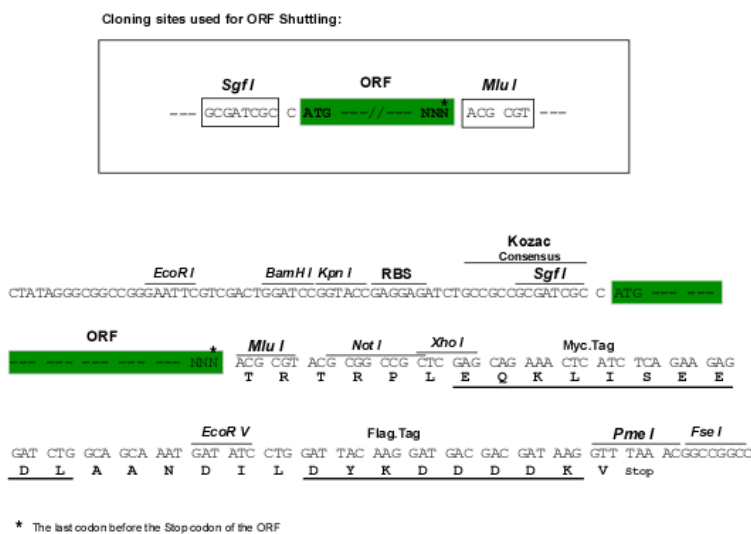
MAAATASPRSLLVLLQVVVLAQAIRGPPGERGPPGPPGPPGVPVGSIDGIDGNDGPPGKAGPPGPKGEPGK
AGPDGPDGKPGIDGLTGAKGEPGPMGIPGVKGGQPLGPPGLPGPGFAGPPGPPGVPGLPGEIGIRGPKG
DPGPDGSPGPPGPKGRPGTIQGLEGSADFLCPTNCPGPMKGPPGLQGVKGHACKRGILGDPGHQGPK
GPKGDV GASGEQIPGPPGQGI RGYPGMAGPKGETGPHGYKGMVGAIGATGPPGEEGPRGPPGRAGEKG
DEGSPGIRGPQGITGPKGATGPPPINGKDGTPGTPGMKGSAGQAGQPGSPGHQGLAGVPGQPGTKGGPGD
QGEPPGQGLPGFSGPPGKEGEPGRGEIGPQGI MGQKGDQGERGPVGPQPQGRQPKGEQPPGIPGPQ
GLPGVKDKGSPGKTGPRKVGDPGVAGLPGEKGEKESGEPGPKQQGVRGEPGYGPGSDAGAPVQG
YPGPPGPRGLAGNRGVGPQGRQVGEGRDADQHIVDVALKMLQEQLAEVAVSARKREALGAVGMMGPPGP
PGPPGYPKQGGPHGHPGRGVPIVGAVGQIGNTGPKGKRGEKGDPEVGRGHPGMPGGIPGLPGRPG
QAINGKDGDRGSPGAPGEAGRPGPLPGVGLPGFCEPAACL GASAYASARL TEPGSIKGP
  
```

TRTRPLEQKLISEEDLAANDILDYKDDDDKV

Chromatograms: https://cdn.origene.com/chromatograms/mk8073_a09.zip

Restriction Sites: SgfI-MluI

Cloning Scheme:



ACCN: NM_001852

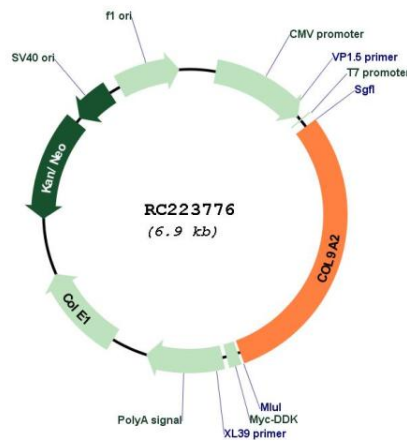
ORF Size: 2067 bp

OTI Disclaimer: The molecular sequence of this clone aligns with the gene accession number as a point of reference only. However, individual transcript sequences of the same gene can differ through naturally occurring variations (e.g. polymorphisms), each with its own valid existence. This clone is substantially in agreement with the reference, but a complete review of all prevailing variants is recommended prior to use. [More info](#)

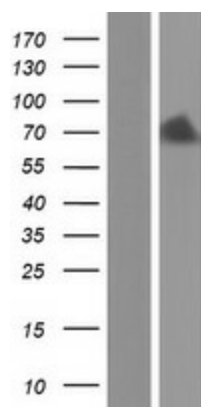
OTI Annotation: This clone was engineered to express the complete ORF with an expression tag. Expression varies depending on the nature of the gene.

Components:	The ORF clone is ion-exchange column purified and shipped in a 2D barcoded Matrix tube containing 10ug of transfection-ready, dried plasmid DNA (reconstitute with 100 ul of water).
Reconstitution Method:	<ol style="list-style-type: none">1. Centrifuge at 5,000xg for 5min.2. Carefully open the tube and add 100ul of sterile water to dissolve the DNA.3. Close the tube and incubate for 10 minutes at room temperature.4. Briefly vortex the tube and then do a quick spin (less than 5000xg) to concentrate the liquid at the bottom.5. Store the suspended plasmid at -20°C. The DNA is stable for at least one year from date of shipping when stored at -20°C.
RefSeq:	NM_001852.4
RefSeq Size:	2831 bp
RefSeq ORF:	2070 bp
Locus ID:	1298
UniProt ID:	Q14055
Cytogenetics:	1p34.2
Protein Families:	Druggable Genome
MW:	65 kDa
Gene Summary:	This gene encodes one of the three alpha chains of type IX collagen, the major collagen component of hyaline cartilage. Type IX collagen, a heterotrimeric molecule, is usually found in tissues containing type II collagen, a fibrillar collagen. This chain is unusual in that, unlike the other two type IX alpha chains, it contains a covalently attached glycosaminoglycan side chain. Mutations in this gene are associated with multiple epiphyseal dysplasia. [provided by RefSeq, Jul 2008]

Product images:



Circular map for RC223776



Western blot validation of overexpression lysate (Cat# [LY419710]) using anti-DDK antibody (Cat# [TA50011-100]). Left: Cell lysates from untransfected HEK293T cells; Right: Cell lysates from HEK293T cells transfected with RC223776 using transfection reagent MegaTran 2.0 (Cat# [TT210002]).