

Product datasheet for **RC223775**

ZNF226 (NM_001032373) Human Tagged ORF Clone

Product data:

Product Type:	Expression Plasmids
Product Name:	ZNF226 (NM_001032373) Human Tagged ORF Clone
Tag:	Myc-DDK
Symbol:	ZNF226
Mammalian Cell Selection:	Neomycin
Vector:	pCMV6-Entry (PS100001)
E. coli Selection:	Kanamycin (25 ug/mL)



[View online »](#)

ORF Nucleotide
Sequence:

>RC223775 ORF sequence
Red=Cloning site Blue=ORF Green=Tags(s)

TTTTGTAATACGACTCACTATAGGGCGGCCGGGAATTCGTCGACTGGATCCGGTACCGAGGAGATCTGCC
GCC**CGGATCGCC**

ATGAATATGTTCAAGGAAGCAGTGACCTTCAAGGACGTGGCTGTGGCCTTCACGGAGGAGGAATTGGGGC
TGCTGGGCCCTGCCAGAGGAAGCTGTACCGAGATGTGATGGTGGAGAACCTTAGGAACCTGCTGTCACT
GGGGCATCCACCTTCAAAACAAGATGTATCACCTATAGAAAGAAATGAGCAGCTTTGGATAATGACGACA
GCAACCCGAAGACAGGGAATTTAGGAGAGAAAAATCAAAGTAAGTTAATTAAGTGTCAAGACAGAGAAT
CAGAAGAAGAGCTTTCTTGTGGCAAACTGGCAACAAATGCAAAATGACTTAACCGAGTGTCAAGACTC
CATGATCAATAATTCTCAGTGTCAAAACAAGGTGATTTCCCTTACCAGGTAGGGACAGAAGTGTCTATT
CAAATTTCTGAAGATGAGAACTATATAGTAAATAAAGCAGATGGTCCCAATAACTGGGAATCCAGAGT
TTCTATCTTGAGAACCCAGGATTTCTGGAGGAAAACATTCCTGACTGAGTCACAGAGATTGAACAGAGA
TCAGCAAAATTTCCATAAAAAATAAATTATGTCAATGTAAGAAGGGTGTGATCCCATCGGTTGGATTTC
CATCATGATGGTCATAGAGTACACAAAAGTGAAAAATCTTATAGACCCAATGATTATGAAAAAGACAACA
TGAAGATTTTGACATTTGATCACAAATAGCATGATTCACACAGGACAGAAATCGTACCAGTGTAAATGAGTG
TAAAAACCCCTTCAGTGTCTCTCCAGCTTTGATCTTTCATCAGCAGTTACAATCAGGAGAGAAGTCTCTT
ACATGTGTTGAGCGTGGAAAAGGCTTCTGTTACAGCCAGTTCCTCTGTTTCATCAGAAAAGTACATGTGG
GAGAAAAACTTAAGTGTGATGAGTGTGGTAAGGAATTCAGTCAGGGCGCTCATCTACAGACCCATCAGAA
AGTCCACGTGATAGAGAAACCATACAAATGTAAGCAATGTGGGAAAGGTTTCAGTCGTAGATCAGCACTT
AATGTTCAATGCAAGGTCCACACGGCAGAGAAAACCTTATAATTTGAGGAGTGTGGGAGGGCCTTCAGTC
AGGCCCTCATCTTCAGGACCATCAGAGACTCCACACTGGGAGAGGCCATTCAAATGTGATGCATGTGG
TAAGAGCTTCAGTCGGAATTCACATCTTCAATCCCATCAAAGAGTTCATACAGGAGAGAAAACCATACAAA
TGTGAGGAGTGTGGTAAGGGCTTCATTTGTAGCTCAAATCTTTACATTCATCAGAGAGTCCACACAGGAG
AAAAACCTATAAATGTGAGGAATGTGGTAAAGGCTTTAGTCGGCCTTCAAGTCTTCAGGCCCATCAGGG
AGTTCACACTGGAGAGAAGTACATACATGTACTGTATGTGGGAAAGGCTTTACTCTGAGTTCAAATCTT
CAAGCCCATCAGAGAGTCCACACTGGAGAGAAGCCATACAAATGCAATGAGTGTGGGAGAGCTTCAGGA
GGAATTCCTTATCAAGTTCATCTAGTGGTCCACACAGGAGAGAAAACCTATAAATGTGAGATATGTGG
GAAGGGCTTCAGTCAAAGTTCGATCTTCAAATCCATCAGAAGGCCACAGTATAGAGAAAACCTTTAAG
TGTGAGGAGTGTGGCAGGGTTTCAATCAGAGCTCACGACTTCAGATTCACCAGCTGATCCATACGGGTG
AGAAACCATACAAATGTGAAGAGTGTGGCAAGGGATTTAGTCGTAGAGCAGATCTTAAAAATTCAGTGTAG
GATCCACACAGGAGAGAAAACCATATAAATGTGAGGAGTGTGGGAAAGGCTTCAGGCAGGCCCTCAAATCTT
TTGGCCCATCAGAGAGTCCACAGTGGAGAAAAACCATCAAATGTGAAGAATGTGGGAGAGTTTCGGTC
GGAGTGCACATCTTCAAGCCATCAAAAAGTCCACACTGGAGATAAGCCATACAAATGTGATGAGTGTGG
GAAGGGCTTCAAGTGGAGCTTGAACCTTGACATGCATCAGAGGGTGCACACAGGAGAAAAACCATATAAA
TGTGGGGAGTGTGGTAAGTACTTCAGTCAGGCCCAAGTCTTCAACTTCATCAGAGTGTCCACACAGGAG
AGAAACCATACAAATGTGATGTGTGTGGTAAAGTCTTCAGTCGGTCTTCACAACTACAGTCTCATCAGCC
AGTTCACACTGGGAGAAAACCTATAAATGTGAGATATGTGGTAAAGAGCTTCAGTTGGCGATCAAATCTT
ACAGTTCATCACAGAATCCATGTTGGTGATAAATCCTATAAAAAGTAATAGGGGTGTAAGAACATCAGAG
AATCCACACAGGAAAAAATCTATAAAA

ACGCGTACGCGGCCGCTCGAGCAGAACTCATCTCAGAAGAGGATCTGGCAGCAAATGATATCCTGGATT
ACAAGGATGACGACGATAAGGTTTAA

Protein Sequence: >RC223775 protein sequence
Red=Cloning site Green=Tags(s)

MNMFKEAVTFKDVAVAFTEEELGLLGPAQRKLYRDMVENFRNLLSVGHPPFKQDVSPIERNEQLWIMTT
ATRRQGNLGEKNQSKLITVQDRESEEELSCWQIWQIANDLTRCQDSMINNSQCHKQGDFFPYQVGTLSI
QISEDENYIVNKADGPNNTGNPEFPILRTQDSWRKTFLTESQRLNRDQQISIKNKLQCKKGVDPIGWIS
HHDGHRVHKSEKSYRPNDEKDNMKILTFDHNSMIHTGQKSYQCNECKKPFSDLSSFDLHQQLQSGEKSL
TCVERGKGF CYSPLPVHQKVHVGEKLCDECGKEFSQGAHLQTHQKVHVIEKPYKCKQCGKGF SRRSAL
NVHCKVHTAEKPYNCEECGRAFSQASHLQDHQRLHTGKPFKCDACGKSF SRNSHLQSHQRVHTGKPYK
CEECGKGFICSSNLYIHQRVHTGKPYKCEECGKGF SRPSSLQAHQGVHTGKSYICTVCGKGF TLSSNL
QAHQRVHTGKPYKCEECGKSFRRNSHYQVHLVVHTGKPYKCEICGKGF SQSSYLQIHQKAHSIEKPFK
CEECGQGFNQSSRLQIHQLIHTGKPYKCEECGKGF SRRADLKIHCRIHTGKPYNCEECGVFRQASNL
LAHQRVHSGEKPFKCEECGKSFGRSAHLQAHQKVHTGDKPYKCEECGKGF KWSLNLDMHQRVHTGKPYK
CGECGYFSQASSLQLHQSVHTGKPYKCDVCGKVF SRSSQLQSHQRVHTGKPYKCEICGKSF SWSRNL
TVHHRIVGDKSYKSNRGGKNIRESTQEKKSIK

TRTRPLEQKLISEEDLAANDILDYKDDDDKV

Chromatograms: https://cdn.origene.com/chromatograms/mk6690_h01.zip

Restriction Sites: Sgfl-Mlul

Cloning Scheme:


ACCN: NM_001032373

ORF Size: 2409 bp

OTI Disclaimer: The molecular sequence of this clone aligns with the gene accession number as a point of reference only. However, individual transcript sequences of the same gene can differ through naturally occurring variations (e.g. polymorphisms), each with its own valid existence. This clone is substantially in agreement with the reference, but a complete review of all prevailing variants is recommended prior to use. [More info](#)

OTI Annotation: This clone was engineered to express the complete ORF with an expression tag. Expression varies depending on the nature of the gene.

Components: The ORF clone is ion-exchange column purified and shipped in a 2D barcoded Matrix tube containing 10ug of transfection-ready, dried plasmid DNA (reconstitute with 100 ul of water).

Reconstitution Method:

1. Centrifuge at 5,000xg for 5min.
2. Carefully open the tube and add 100ul of sterile water to dissolve the DNA.
3. Close the tube and incubate for 10 minutes at room temperature.
4. Briefly vortex the tube and then do a quick spin (less than 5000xg) to concentrate the liquid at the bottom.
5. Store the suspended plasmid at -20°C. The DNA is stable for at least one year from date of shipping when stored at -20°C.

RefSeq: [NM_001032373.1](#), [NP_001027545.1](#)

RefSeq Size: 2587 bp

RefSeq ORF: 2412 bp

Locus ID: 7769

UniProt ID: [Q9NYT6](#)

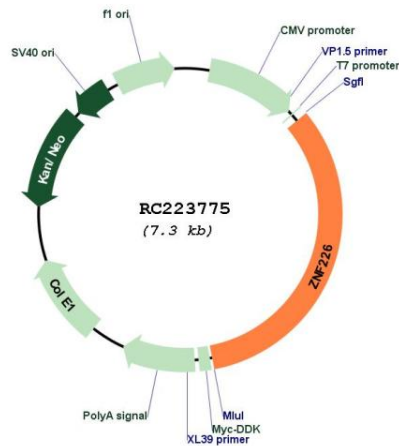
Cytogenetics: 19q13.31

Protein Families: Transcription Factors

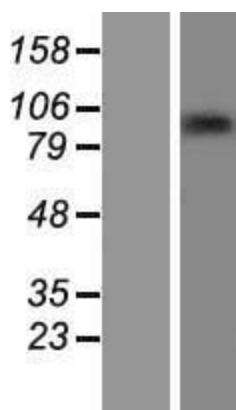
MW: 91.9 kDa

Gene Summary: May be involved in transcriptional regulation.[UniProtKB/Swiss-Prot Function]

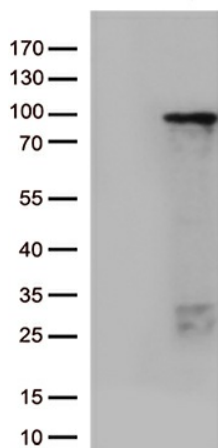
Product images:



Circular map for RC223775



Western blot validation of overexpression lysate (Cat# [LY422312]) using anti-DDK antibody (Cat# [TA50011-100]). Left: Cell lysates from untransfected HEK293T cells; Right: Cell lysates from HEK293T cells transfected with RC223775 using transfection reagent MegaTran 2.0 (Cat# [TT210002]).



HEK293T cells were transfected with the pCMV6-ENTRY control (Cat# [PS100001], Left lane) or pCMV6-ENTRY ZNF226 (Cat# RC223775, Right lane) cDNA for 48 hrs and lysed. Equivalent amounts of cell lysates (5 ug per lane) were separated by SDS-PAGE and immunoblotted with anti-ZNF226 (Cat# [TA812738])(1:500).