

Product datasheet for **RC223774**

TMPRSS5 (NM_030770) Human Tagged ORF Clone

Product data:

Product Type:	Expression Plasmids
Product Name:	TMPRSS5 (NM_030770) Human Tagged ORF Clone
Tag:	Myc-DDK
Symbol:	TMPRSS5
Synonyms:	SPINESIN
Mammalian Cell Selection:	Neomycin
Vector:	pCMV6-Entry (PS100001)
E. coli Selection:	Kanamycin (25 ug/mL)



[View online »](#)

ORF Nucleotide Sequence:

>RC223774 representing NM_030770
 Red=Cloning site Blue=ORF Green=Tags(s)

TTTTGTAATACGACTCACTATAGGGCGGCCGGAATTCGTCGACTGGATCCGGTACCGAGGAGATCTGCC
 GCC**CGCATCGCC**

ATGAGCCTGATGTGGATGACCAACCCCTATGGAGGCCAATATGCAGAGGAGGGCCAGACCTGGGA
 TCTTCAGAGCAGAGCCTGGAGACCAGCAGCATCCATTTCTCAGGCGGTGTGCTGGCGTTCCATGCGACG
 TGGCTGTGCAGTGCTGGGAGCCCTGGGGCTGCTGGCCGGTGCAGGTGTTGGCTCATGGCTCCTAGTGCTG
 TATCTGTGTCCTGCTGCCTCTCAGCCCATTCCGGGACCTTCAGGATGAGGAGATAACTTTGAGCTGCT
 CAGAGGCCAGCGCTGAGGAAGCTCTGCTCCCTGCACCTCCAAAACAGTATCTTTCAGAATAAACAGCGA
 AGACTTCTTGTGGAAGCGCAAGTGAGGGATCAGCCACGCTGGCTCCTGGTCTGCCATGAGGGCTGGAGC
 CCCGCCCTGGGGCTGCAGATCTGCTGGAGCCTGGGCATCTCAGACTCACTCACCACAAGGGAGTAAACC
 TCACTGACATCAAACAGTCCAGGAGTTTCTCAGCTCTCTCCTAGACTGGGAGCTTCTCTGGA
 GGAGGCGTGGCAGCCAGGAACAACTGCACCTTCTGGTCAAGTTGTTCCCTCAGATGCTCTGAGTGTGGA
 GCGAGGCCCTGGCTTCCCGGATAGTTGGTGGGAGTCTGTGGCTCCTGGGCGCTGGCCGTGGCAGGCCA
 GCGTGGCCCTGGGCTCCGGCACACGTGTGGGGCTCTGTGCTAGCGCCACGCTGGTGGTACTGCTGC
 ACATTGTATGCACAGTTTCAGGCTGGCCCGCTGTCCAGCTGGCGGGTTCATGCGGGCTGGTACGCCAC
 AGTGCCGTGAGGCCACCAAGGGCTCTGGTGGAGAGGATTATCCACACCCCTCTACAGTGCCGAGA
 ATCATGACTACGACGTCGCCCTCCTGAGGCTCCAGACCGCTCTCAACTTCTCAGACACTGTGGGCGCTGT
 GTGCTGCCGGCAAGGAACAGCATTTCGAAGGGCTCGCGGTGCTGGTGTCTGGCTGGGGCCACACC
 CACCCTAGCCATACTTACAGCTCGGATATGCTCCAGGACACGGTGGTGGCCCTGCTCAGCACTCAGCTCT
 GCAACAGCTCTTGCCTGTACAGCGGAGCCCTCACCCCGCATGCTTTGCGCTGGCTACCTGGCAGTAAAG
 GGCTGATGCATGCCAGGAGATAGCGGGGCCCCCTAGTGTGCCAGATGGGGACACATGGCGCCTAGTG
 GGGTGGTCACTGGGGCGTGGCTGCGCAGAGCCCAATCACCCAGGTGTCTACGCCAAGGTAGCTGAGT
 TTCTGGACTGGATCCATGACACTGCTCAGGACTCCCTCCTC

ACGCGTACGCGGCCGCTCGAGCAGAACTCATCTCAGAAGAGGATCTGGCAGCAAATGATATCCTGGATT
 ACAAGGATGACGACGATAAGGTTTAA

Protein Sequence:

>RC223774 representing NM_030770
 Red=Cloning site Green=Tags(s)

MSLMLDDQPPMEAQYAEEGPGPIFRAEPGDQHPISQAVCWRSRMRGCAVLGALGLLAGAGVGSWLLVL
 YLCPAASQPIISGTLQDEEITLSCSEASAEALLPALPKTVSFRINSEDFLLEAQVRDQPRWLLVCHGWS
 PALGLQICWSLGHRLRTHHKGVNLDIKLNSSQEFALSPRLGGFLEEAWQPRNNCTSGQVVSLRCSECG
 ARPLASRIVGGQSVAPGRWPQASVALGFRHTCGGSVLAPRWVVTAAHCMHSFRLARLSSWRVHAGLVSH
 SAVRPHQALVERIIPHPLYSAQNHDYDVALRLQTALNFSDTVGAVCLPAKEQHFPGKSRWCWVSGWGT
 HPSHTYSSDMLQDTVVPLLSTQLCNSSCVYSGALTTPRMLCAGYLDGRADACQGDSSGGLVCPDGDWRLV
 GVVSWGRGCAEPNHPGVYAKVAEFLDWIHDTAQDSSL

TRTRPLEQKLISEEDLAANDILDYKDDDDKV

Chromatograms:

https://cdn.origene.com/chromatograms/mg2755_d05.zip

Restriction Sites:

Sgfl-Mlul

Cloning Scheme:


ACCN: NM_030770

ORF Size: 1371 bp

OTI Disclaimer: The molecular sequence of this clone aligns with the gene accession number as a point of reference only. However, individual transcript sequences of the same gene can differ through naturally occurring variations (e.g. polymorphisms), each with its own valid existence. This clone is substantially in agreement with the reference, but a complete review of all prevailing variants is recommended prior to use. [More info](#)

OTI Annotation: This clone was engineered to express the complete ORF with an expression tag. Expression varies depending on the nature of the gene.

Components: The ORF clone is ion-exchange column purified and shipped in a 2D barcoded Matrix tube containing 10ug of transfection-ready, dried plasmid DNA (reconstitute with 100 ul of water).

- Reconstitution Method:**
1. Centrifuge at 5,000xg for 5min.
 2. Carefully open the tube and add 100ul of sterile water to dissolve the DNA.
 3. Close the tube and incubate for 10 minutes at room temperature.
 4. Briefly vortex the tube and then do a quick spin (less than 5000xg) to concentrate the liquid at the bottom.
 5. Store the suspended plasmid at -20°C. The DNA is stable for at least one year from date of shipping when stored at -20°C.

RefSeq: [NM_030770.4](#)

RefSeq Size: 2265 bp

RefSeq ORF: 1374 bp

Locus ID: 80975

UniProt ID: [Q9H3S3](#)

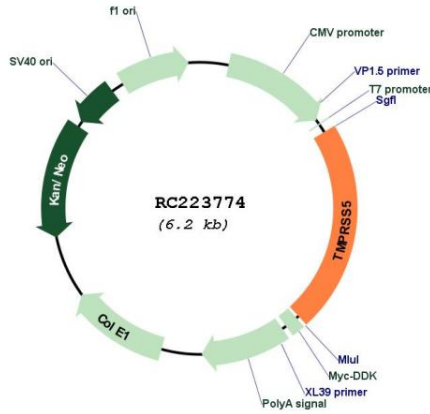
Cytogenetics: 11q23.2

Protein Families: Druggable Genome, Protease, Transmembrane

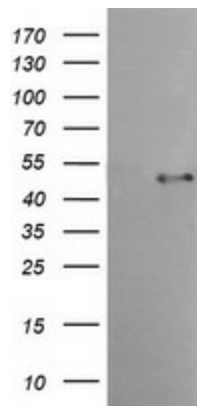
MW: 49.4 kDa

Gene Summary: This gene encodes a protein that belongs to the serine protease family. Serine proteases are known to be involved in many physiological and pathological processes. Alternative splicing results in multiple transcript variants. [provided by RefSeq, Jan 2014]

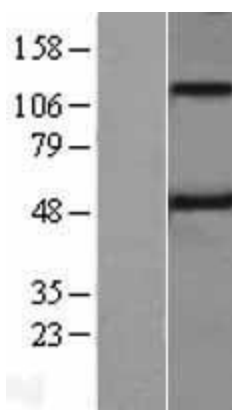
Product images:



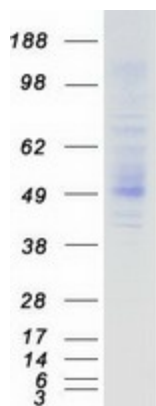
Circular map for RC223774



HEK293T cells were transfected with the pCMV6-ENTRY control (Cat# [PS100001], Left lane) or pCMV6-ENTRY TMPRSS5 (Cat# RC223774, Right lane) cDNA for 48 hrs and lysed. Equivalent amounts of cell lysates (5 ug per lane) were separated by SDS-PAGE and immunoblotted with anti-TMPRSS5 (Cat# [TA504339]). Positive lysates [LY410720] (100ug) and [LC410720] (20ug) can be purchased separately from OriGene.



Western blot validation of overexpression lysate (Cat# [LY410720]) using anti-DDK antibody (Cat# [TA50011-100]). Left: Cell lysates from untransfected HEK293T cells; Right: Cell lysates from HEK293T cells transfected with RC223774 using transfection reagent MegaTran 2.0 (Cat# [TT210002]).



Coomassie blue staining of purified TMPRSS5 protein (Cat# [TP323774]). The protein was produced from HEK293T cells transfected with TMPRSS5 cDNA clone (Cat# RC223774) using MegaTran 2.0 (Cat# [TT210002]).