

Product datasheet for **RC223771**

OSGIN2 (NM_004337) Human Tagged ORF Clone

Product data:

Product Type:	Expression Plasmids
Product Name:	OSGIN2 (NM_004337) Human Tagged ORF Clone
Tag:	Myc-DDK
Symbol:	OSGIN2
Synonyms:	C8orf1; hT41
Mammalian Cell Selection:	Neomycin
Vector:	pCMV6-Entry (PS100001)
E. coli Selection:	Kanamycin (25 ug/mL)



[View online »](#)

ORF Nucleotide Sequence:

>RC223771 representing NM_004337
 Red=Cloning site Blue=ORF Green=Tags(s)

TTTTGTAATACGACTCACTATAGGGCGGCCGGAATTCGTCGACTGGATCCGGTACCGAGGAGATCTGCC
 GCC**CGGATCGCC**

ATGCCATTAGTTGAAGAACTTCTTTACTGGAAGATTCGTCAGTACTTTTCTGTGGTAATAATAGGAA
 ATGGACCCTCAGGAATATGCCTTTCTTATATGTTATCAGGCTACAGACCGTATTTATCATCAGAAGCAAT
 ACACCCAAATACAATCTTAAATAGTAAATTAGAAGAAGCAAGACATCTTTCCATTGTTGATCAGGACTTA
 GAATACTGTCTGAGGGCCTTGAGGGCCGATCATCCAATCCAGTTGCAGTACTTTTCGATACACTTCTTC
 ATCCAGATGCTGACTTTGGGTATGATTATCCATCCGTTTTGCATTGGAAATTAGAGCAACATCATTATAT
 CCCTCACGTAGTCTTGGTAAAGGTCCACCTGGTGGGCTTGGCATAATATGGAAGGCTCCATGTTGACA
 ATCAGCTTTGGAAGTTGGATGGAATTACCTGGACTTAAATTTAAGGACTGGGTATCAAGTAAACGAAGGA
 GCCTAAAAGGGGATCGAGTTATGCCAGAGGAAATAGCTCGCTACTATAAACATTATGTAAGTCAATGGG
 TCTTCAGAAGAATTTAGAGAGAATACTTACATAACTTCCGTATCAAGACTCTACAGAGATCAAGATGAT
 GATGATATTCAAGACAGAGATATTTCAACAAAGCATTACAGATAGAGAAGTCAAACCTTTATCAAGAGAA
 ACTGGGAAATTAGGGTTATCAGCGAATAGCTGATGGTCTCATGTTCCCTTCTGCCTCTTTGCTGAGAA
 TGTAGCGCTGGCAACTGGAACGCTGGATTCTCCTGCCATCTGGAAATTGAAGGGGAAGATTTTCTTTT
 GTGTTTCAATCAATGCCTGAATTTGGAGCTGCTATAAACAAGGAAAGTTGCGTGGCAAAGTGGATCCAG
 TGTTAATTGTAGGTTCTGGGCTTACTGCCGCTGACGCAGTACTGTGTGCTTACAACAGTAATATCCCTGT
 GATTCATGTGTTTCGACAGCAGTAAGTCAAGCTTAAATTTCAAACAGCTTCCAAAAAGCTGAT
 CCTGAATATCATAAAGTCTATCATATGATGTGACTCAGTCATATTCTGTAGACTCAAATCTTTTATCTG
 ATTATACCAGCTTTCCCGACACCGTGTGCTTTTCTTTAAGTCGGACATGAAATGTGTTTCCAAAGCGT
 TTCTGGATTGAAGAAAATATTTAAGCTGTCTGCAGCAGTAGTATTGATAGGTTCTCATCCTAATCTGTCT
 TTTCTGAAGGATCAAGGGTGTACCTAGGCCATAAGTCAAGCCAGCCAATCACATGTAAGGGTAATCCTG
 TGGAAATAGATACATACCTATGAGTGTATTAAGAAGCCAACCTTTTTGCATTGGGCTCTTTGTTGG
 AGACAATTTTGTTCGATTTTAAAGGGAGGGCGCTGGGTGTTACACGCTGTTTAGCTACAAGACAGAAG
 AAAAGCATTGTTTGTGAAAGAGGAGGAGGATGGGATAGCT

ACGCGTACGCGGCCGCTCGAGCAGAACTCATCTCAGAAGAGGATCTGGCAGCAAATGATATCCTGGATT
 ACAAGGATGACGACGATAAGGTTTAA

Protein Sequence:

>RC223771 representing NM_004337
 Red=Cloning site Green=Tags(s)

MPLVEETSLLLEDSSVTFPVVVIIGNGPSGICLSYMLSGYRPLYLSEAIHPNTILNSKLEEARHLSIVDQDL
 EYLSEGLEGRSSNPVAVLFDTLHPDADFQYDPSVLHWKLEQHHYIPHVVLGKPPGGAWHNMEGSMLT
 ISFGSWMELPGLKFKDWVSSKRRSLKGDVMPPEIARYYKHYVKVMGLQKNFRENTYITSVSRLYRDQDD
 DDIQDRDISTKHLQIEKSNFIKRNWEIRGYQRIADGSHVPCFLFAENVALATGTLDSPAHLEIEGEDFPF
 VFHSMPEFGAAINKGKLRGVDPVLIIVGSLTAADAVLCAYNIPVIVHFRFRVTDPSLIFKQLPKKLY
 PEYHKVYHMMCTQSYSDSNLLSDYTSFPEHRVLSFKSDMKCVLQSVSGLKIKIFKLSAAVVLIGSHPNLS
 FLKDQGCYLGHKSSQPITCKGNPVEIDTYTYEIKANLFAIGPLVGDNFVRFLKGGALGVTRCLATRQK
 KKHLFVERGGDGI

TRTRPLEQKLISEEDLAANDILDYKDDDDKV

Chromatograms:

https://cdn.origene.com/chromatograms/mk6485_d01.zip

Restriction Sites:

Sgfl-Mlul

Cloning Scheme:


ACCN: NM_004337

ORF Size: 1515 bp

OTI Disclaimer: The molecular sequence of this clone aligns with the gene accession number as a point of reference only. However, individual transcript sequences of the same gene can differ through naturally occurring variations (e.g. polymorphisms), each with its own valid existence. This clone is substantially in agreement with the reference, but a complete review of all prevailing variants is recommended prior to use. [More info](#)

OTI Annotation: This clone was engineered to express the complete ORF with an expression tag. Expression varies depending on the nature of the gene.

Components: The ORF clone is ion-exchange column purified and shipped in a 2D barcoded Matrix tube containing 10ug of transfection-ready, dried plasmid DNA (reconstitute with 100 ul of water).

- Reconstitution Method:**
1. Centrifuge at 5,000xg for 5min.
 2. Carefully open the tube and add 100ul of sterile water to dissolve the DNA.
 3. Close the tube and incubate for 10 minutes at room temperature.
 4. Briefly vortex the tube and then do a quick spin (less than 5000xg) to concentrate the liquid at the bottom.
 5. Store the suspended plasmid at -20°C. The DNA is stable for at least one year from date of shipping when stored at -20°C.

RefSeq: [NM_004337.2](#)

RefSeq Size: 4199 bp

RefSeq ORF: 1518 bp

Locus ID: 734

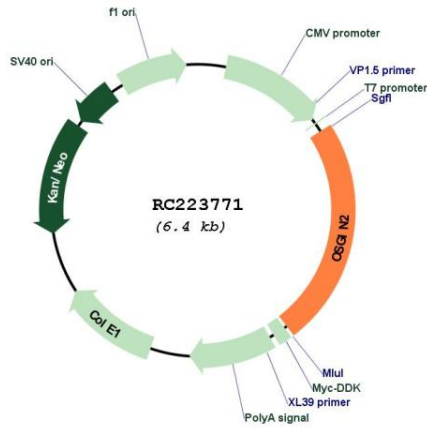
UniProt ID: [Q9Y236](#)

Cytogenetics: 8q21.3

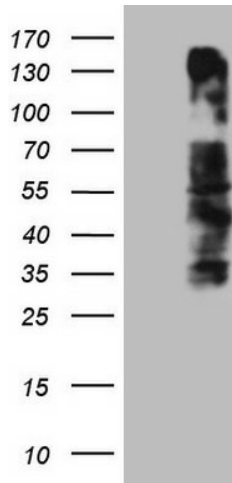
MW: 56.5 kDa

Gene Summary: May be involved in meiosis or the maturation of germ cells.[UniProtKB/Swiss-Prot Function]

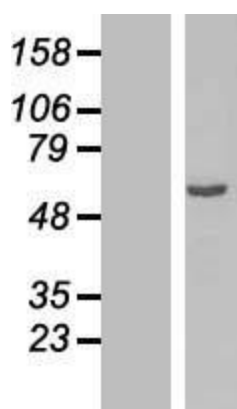
Product images:



Circular map for RC223771



HEK293T cells were transfected with the pCMV6-ENTRY control (Cat# [PS100001], Left lane) or pCMV6-ENTRY OSGIN2 (Cat# RC223771, Right lane) cDNA for 48 hrs and lysed. Equivalent amounts of cell lysates (5 ug per lane) were separated by SDS-PAGE and immunoblotted with anti-OSGIN2 (Cat# [TA808943])(1:2000). Positive lysates [LY418053] (100ug) and [LC418053] (20ug) can be purchased separately from OriGene.



Western blot validation of overexpression lysate (Cat# [LY418053]) using anti-DDK antibody (Cat# [TA50011-100]). Left: Cell lysates from untransfected HEK293T cells; Right: Cell lysates from HEK293T cells transfected with RC223771 using transfection reagent MegaTran 2.0 (Cat# [TT210002]).