

Product datasheet for **RC223768**

ZNF446 (NM_017908) Human Tagged ORF Clone

Product data:

| | |
|---------------------------|---|
| Product Type: | Expression Plasmids |
| Product Name: | ZNF446 (NM_017908) Human Tagged ORF Clone |
| Tag: | Myc-DDK |
| Symbol: | ZNF446 |
| Synonyms: | ZKSCAN20; ZSCAN30; ZSCAN52 |
| Mammalian Cell Selection: | Neomycin |
| Vector: | pCMV6-Entry (PS100001) |
| E. coli Selection: | Kanamycin (25 ug/mL) |



[View online »](#)

ORF Nucleotide Sequence:

>RC223768 representing NM_017908
 Red=Cloning site Blue=ORF Green=Tags(s)

TTTTGTAATACGACTCACTATAGGGCGGCCGGAATTCGTCGACTGGATCCGGTACCGAGGAGATCTGCC
 GCC**CGATCGCC**

ATGCCATCCCCTCTGGTCCCCATGCCTGCCCGTCATGGACCCAGAGACCCTCGAGGAGCCTGAGA
 CTGCCCGCTCCGCTTCCGAGGGTTCTGCTACCGAGAGGTGGCAGGTCCCGAGAAGCCCTGGCCCGCT
 GCGTGAGCTGTGTGCCAGTGGCTGCAGCCTGAGGCACACTCCAAGGAGCAGATGCTGGAGATGCTGGTG
 CTGGAGCAGTTCTGGGCACACTGCCTCCCGAGATCCAGGCCTGGGTGCGCGGTACGCGCCAGGCAGTC
 CTGAGGAGGCCGCTGCCCTAGTCGAAGGACTGCAGCATGACCCTGGGCAACTGTTGGGCTGGATCACAGC
 CCATGTCTGAAGCAGGAGGTGCTCCCTGCAGCCAGAAGACAGAGGAACCACTTGGGAGCCCCACCCC
 TCAGGGACAGTGGAGTCCCCTGGGAAGGTCCCAGGACACCAGAATAGAGGGTCTGTCCAGCTCAGCT
 GCAGTGTGAAGGAGGAGCCAAATGTCGATGGACAGGAAGTGGCACCTCCAGCCCTCCACTTGCAGCACA
 GTCCCCTGAGGGGAACCATGGACACCAAGAACCAGCCTCCACATCCTTCCACCCACCCAGGATTCAGGAG
 GAGTGGGGGCTGCTGGACCGGTACAGAAGGAAGTGTACTGGGATGCGATGCTGGAGAAGTACGGCACAG
 TGGTCTCCCTGGGGTTACCGCCCCACCAGCCAGAGGCACAGGCCACGTCAGAGCTGGGGATGCTGCTCAC
 GGGGACAGGCGTCTGCAGAAGCCTGCGCTCGGGAATGAGAGTGAAGGTCCACCTGGCTGCCAGAGGCC
 CAGCCGCCCCAGGGCCAGGGCCGCGAGCCTGGGAGGGCTTGTCTGGGGCTGCCACTCCTGCCCCACTG
 TGCGCCAGGGACACCGCCAGTGCCCACTCAGCCACACCTGCAGAGACGAGACTGGAGCCGGCTGCCAC
 CCCCAGGAAGCCCTACACGTGCGAGCAGTGTGGCCGCGGCTTCTGACTGGAAGTCACTGTTTCGTCATCCAC
 CACCGGACACACAGTGGGCCAGGTGTGAGTCCCCGGGCTAGCCACCGGGAAAGCAGAGAGAAGC
 ACCACAAGGGGAGGTGGCCTTCCGCACCACCCCGACGCTCACTACGGGCCCCCGGAGTTACCCGTG
 TGAGGAGTGGGGTGCAGCTTCACTGGAAGTCGCAGCTGGTCAACCACGCAAGAGCCACACAGGCCAG
 CGGCGTCACTTCTGAGTACTGTGGCCGCGCCTTCGACTGGAAGTCGCAGCTGGTCATCCACCGCAAGG
 GCCACCGCCGGAGGTTCCA

ACGCGTACGCGGCCGCTCGAGCAGAACTCATCTCAGAAGAGGATCTGGCAGCAAATGATATCCTGGATT
 ACAAGGATGACGACGATAAGGTTTAA

Protein Sequence:

>RC223768 representing NM_017908
 Red=Cloning site Green=Tags(s)

MPSPLGPPCLPVMDEETLEETARLFRGFCYQEVAGPREALARLRELCCQWLQPEAHSKEQMLEMLV
 LEQFLGTLPEIQAWVRGQRPGSPEEAAALVEGLQHDPGQLLWITAHVLKQEVLPAAQKTEEPLGSPHP
 SGTVESPGEGPQDTRIEGSVQLSCSVKEEPNVDGQEVAPSSPPLAAQSPEGNHGHQEPASTSFHPPRIQE
 EWGLLDRSQKELYWDAMLEKYGTVVSLGLPPHQPEAQAQSELGMLLTGTGVCRLSRSGNESEGPPGCEPA
 QPPQGGPAAWEGLSGAATPAPTVPPTPPVPTQPTPAETRLPAATPRKPYTCEQCGRGFDWKSVEFVH
 HRTHTSGPGVQSPGLATGESTEKPPQGEVAFPHHPRRSLTGPRSYPCCECGCSFSWKSQLVIIHRKSHTGQ
 RRHFCSDCGRAFDWKSQLVIIHRKGRPEVP

TRTRPLEQKLISEEDLAANDILDYKDDDDKV

Chromatograms:

https://cdn.origene.com/chromatograms/mk8046_h12.zip

Restriction Sites:

Sgfl-MluI

Cloning Scheme:


ACCN: NM_017908

ORF Size: 1350 bp

OTI Disclaimer: The molecular sequence of this clone aligns with the gene accession number as a point of reference only. However, individual transcript sequences of the same gene can differ through naturally occurring variations (e.g. polymorphisms), each with its own valid existence. This clone is substantially in agreement with the reference, but a complete review of all prevailing variants is recommended prior to use. [More info](#)

OTI Annotation: This clone was engineered to express the complete ORF with an expression tag. Expression varies depending on the nature of the gene.

Components: The ORF clone is ion-exchange column purified and shipped in a 2D barcoded Matrix tube containing 10ug of transfection-ready, dried plasmid DNA (reconstitute with 100 ul of water).

Reconstitution Method:

1. Centrifuge at 5,000xg for 5min.
2. Carefully open the tube and add 100ul of sterile water to dissolve the DNA.
3. Close the tube and incubate for 10 minutes at room temperature.
4. Briefly vortex the tube and then do a quick spin (less than 5000xg) to concentrate the liquid at the bottom.
5. Store the suspended plasmid at -20°C. The DNA is stable for at least one year from date of shipping when stored at -20°C.

Note: Plasmids are not sterile. For experiments where strict sterility is required, filtration with 0.22um filter is required.

RefSeq: [NM_017908.2](#)

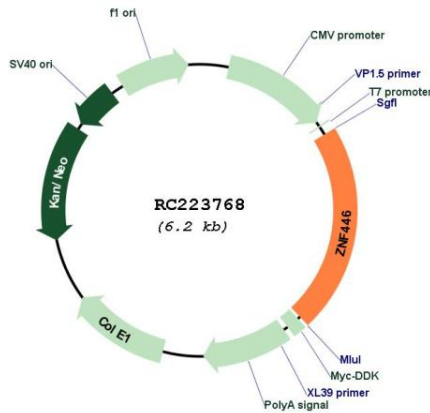
RefSeq Size: 1998 bp

RefSeq ORF: 1353 bp

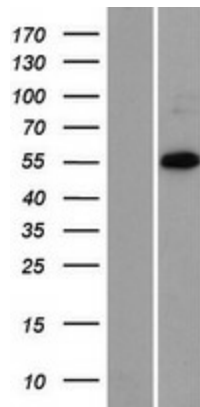
Locus ID: 55663

UniProt ID: [Q9NWS9](#)
Cytogenetics: 19q13.43
Domains: KRAB, LER, zf-C2H2
Protein Families: Transcription Factors
MW: 48.8 kDa
Gene Summary: May be involved in transcriptional regulation.[UniProtKB/Swiss-Prot Function]

Product images:



Circular map for RC223768



Western blot validation of overexpression lysate (Cat# [LY413454]) using anti-DDK antibody (Cat# [TA50011-100]). Left: Cell lysates from untransfected HEK293T cells; Right: Cell lysates from HEK293T cells transfected with RC223768 using transfection reagent MegaTran 2.0 (Cat# [TT210002]).