

Product datasheet for **RC223767**

LXR alpha (NR1H3) (NM_005693) Human Tagged ORF Clone

Product data:

Product Type:	Expression Plasmids
Product Name:	LXR alpha (NR1H3) (NM_005693) Human Tagged ORF Clone
Tag:	Myc-DDK
Symbol:	LXR alpha
Synonyms:	LXR-a; LXRA; RLD-1
Mammalian Cell Selection:	Neomycin
Vector:	pCMV6-Entry (PS100001)
E. coli Selection:	Kanamycin (25 ug/mL)



[View online »](#)

ORF Nucleotide Sequence:

>RC223767 representing NM_005693
 Red=Cloning site Blue=ORF Green=Tags(s)

TTTTGTAATACGACTCACTATAGGGCGGCCGGAATTCGTCGACTGGATCCGGTACCGAGGAGATCTGCC
 GCC**CGCATCGCC**

ATGTCCTTGTGGCTGGGGCCCCCTGTGCCTGACATTCCTCCTGACTCTGCGGTGGAGCTGTGGAAGCCAG
 GCGCACAGGATGCAAGCAGCCAGGCCAGGGAGGCAGCAGCTGCATCCTCAGAGAGGAAGCCAGGATGCC
 CCACTCTGCTGGGGTACTGCAGGGTGGGGCTGGAGGCTGCAGAGCCCACAGCCCTGCTCACCAGGGCA
 GAGCCCCCTTCAGAACCCACAGAGATCCGTCCACAAAAGCGAAAAAGGGCCAGCCCCAAAATGCTGG
 GGAACGAGCTATGCAGCGTGTGTGGGACAAGGCCTCGGGCTTCCACTACAATGTTCTGAGCTGCGAGGG
 CTGCAAGGGATTCTCCGCCGAGCGTCATCAAGGGAGCGCACTACATCTGCCACAGTGGCGGCCACTGC
 CCCATGGACACCTACATGCGTCGCAAGTCCAGGAGTGTGGCTTCGCAAATGCCGTGAGCTGGCATGC
 GGGAGGAGTGTCTGTGTCAGAAGAACAGATCCGCCTGAAGAACTGAAGCGCAAGAGGAGGAACAGGC
 TCATGCCACATCCTTGCCCCCAGGGCTTCTCACCCCCAAAATCCTGCCCCAGCTCAGCCCGGAACAA
 CTGGGCATGATCGAGAAGCTCGTCGCTGCCAGCAACAGTGTAAACGGCGCTCCTTTTCTGACCGGCTTC
 GAGTCACGCCCTTGCCCATGGCACCAGATCCCCATAGCCGGGAGGCCCGTCAGCAGCGCTTTGCCCACTT
 CACTGAGCTGGCCATCGTCTCTGTGAGGAGATAGTTGACTTTGCTAAACAGCTACCCGGCTTCTCGAG
 CTCAGCCGGGAGGACCAGATTGCCCTGTGAAGACCTCTGCGATCGAGGTGATGCTTCTGGAGACATCTC
 GGAGGTACAACCTGGGAGTGAGAGTATCACCTTCTCAAGGATTTCAAGTTATAACCGGGAAGACTTTGC
 CAAAGCAGGGTGCAAGTGAATTCATCAACCCATCTTCGAGTTCTCCAGGGCCATGAATGAGCTGCAA
 CTCAATGATGCCGAGTTGCCTTGCTCATTGCTATCAGCATCTTCTGTCAGACCCGCCAACGTGCAGG
 ACCAGTCCAGGTAGAGAGGCTGCAGCACACATGTGGAAGCCCTGCATGCCTACGTCTCCATCCACCA
 TCCCCATGACCGACTGATGTTCCACGGATGCTAATGAACTGGTGAGCCTCCGGACCTGAGCAGCGCTC
 CACTCAGAGCAAGTGTGGTCTGCACTGCGTCTGCAGGACAAAAGCTCCCACCGCTGCTCTGAGATCTGG
 ATGTGCACGAA

ACGCGTACGCGGCCGCTCGAGCAGAAACTCATCTCAGAAGAGGATCTGGCAGCAAATGATATCCTGGATT
 ACAAGGATGACGACGATAAGGTTTAA

Protein Sequence:

>RC223767 representing NM_005693
 Red=Cloning site Green=Tags(s)

MSLWLGA PVPDIP PDSAVELWKPQA DASSQA QGGSSCIL REEARMPHSAGGTAGVGLEAAEPTALLTRA
 EPPSEPT EIRPQKR KKGPA PKMLGNELCSVCGDKASGFHYNVLSCEGCKGFFRRSVIKGAHYICHSGGHC
 PMDTYMR RKCQECRLR KCRQAGM REECVLSEEQIRLKKLRQEEEEQA HATSLPPRASSPPQILPQLSPEQ
 LGMIEKLVAAQQCNRRSFSDRLRVTPWPMAPDPHSREARQRF AHFTELAI VSVQEIVDFAKQLPGFLQ
 LSREDQIALLKTS AIEVM LLET SRYPNGSEITFLKDFSYNREDFAKAGLQVEFINPIFEFSRAMNELQ
 LNDAEFALLIAISIFSADRPNVQDQLQVERLQHTYVEALHAYVSIHHPHDRLMFPRLMKLVSLRTLSSV
 HSEQVFALRLQDKKL PPLLSEIWDVHE

TRTRPLEQKLISEEDLAANDILDYKDDDDKV

Chromatograms:

https://cdn.origene.com/chromatograms/mk6158_b04.zip

Restriction Sites:

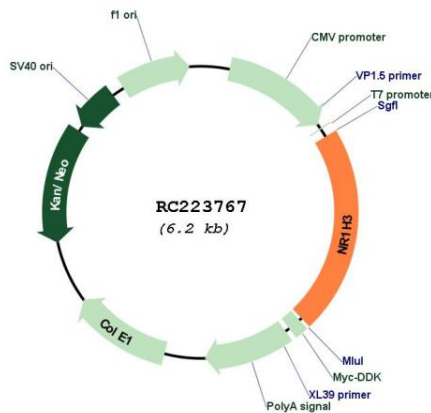
Sgfl-Mlul

Cloning Scheme:

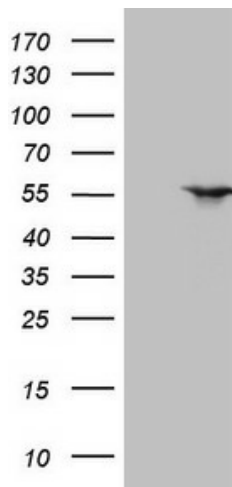

- ACCN:** NM_005693
- ORF Size:** 1341 bp
- OTI Disclaimer:** The molecular sequence of this clone aligns with the gene accession number as a point of reference only. However, individual transcript sequences of the same gene can differ through naturally occurring variations (e.g. polymorphisms), each with its own valid existence. This clone is substantially in agreement with the reference, but a complete review of all prevailing variants is recommended prior to use. [More info](#)
- OTI Annotation:** This clone was engineered to express the complete ORF with an expression tag. Expression varies depending on the nature of the gene.
- Components:** The ORF clone is ion-exchange column purified and shipped in a 2D barcoded Matrix tube containing 10ug of transfection-ready, dried plasmid DNA (reconstitute with 100 ul of water).
- Reconstitution Method:**
1. Centrifuge at 5,000xg for 5min.
 2. Carefully open the tube and add 100ul of sterile water to dissolve the DNA.
 3. Close the tube and incubate for 10 minutes at room temperature.
 4. Briefly vortex the tube and then do a quick spin (less than 5000xg) to concentrate the liquid at the bottom.
 5. Store the suspended plasmid at -20°C. The DNA is stable for at least one year from date of shipping when stored at -20°C.
- Note:** Plasmids are not sterile. For experiments where strict sterility is required, filtration with 0.22um filter is required.
- RefSeq:** [NM_005693.4](#)
- RefSeq Size:** 1528 bp
- RefSeq ORF:** 1344 bp
- Locus ID:** 10062

UniProt ID:	<u>Q13133</u>
Cytogenetics:	11p11.2
Domains:	HOLI, zf-C4
Protein Families:	Druggable Genome, Nuclear Hormone Receptor, Transcription Factors
Protein Pathways:	PPAR signaling pathway
MW:	50.2 kDa
Gene Summary:	The protein encoded by this gene belongs to the NR1 subfamily of the nuclear receptor superfamily. The NR1 family members are key regulators of macrophage function, controlling transcriptional programs involved in lipid homeostasis and inflammation. This protein is highly expressed in visceral organs, including liver, kidney and intestine. It forms a heterodimer with retinoid X receptor (RXR), and regulates expression of target genes containing retinoid response elements. Studies in mice lacking this gene suggest that it may play an important role in the regulation of cholesterol homeostasis. Alternatively spliced transcript variants encoding different isoforms have been found for this gene. [provided by RefSeq, Oct 2011]

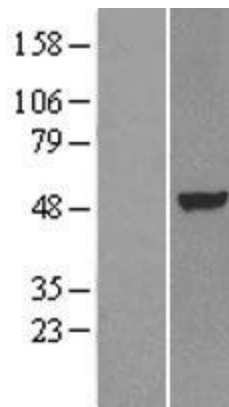
Product images:



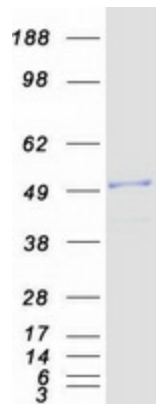
Circular map for RC223767



HEK293T cells were transfected with the pCMV6-ENTRY control (Cat# [PS100001], Left lane) or pCMV6-ENTRY NR1H3 (Cat# RC223767, Right lane) cDNA for 48 hrs and lysed. Equivalent amounts of cell lysates (5 ug per lane) were separated by SDS-PAGE and immunoblotted with anti-NR1H3 (Cat# [TA805015])(1:2000). Positive lysates [LY401738] (100ug) and [LC401738] (20ug) can be purchased separately from OriGene.



Western blot validation of overexpression lysate (Cat# [LY401738]) using anti-DDK antibody (Cat# [TA50011-100]). Left: Cell lysates from untransfected HEK293T cells; Right: Cell lysates from HEK293T cells transfected with RC223767 using transfection reagent MegaTran 2.0 (Cat# [TT210002]).



Coomassie blue staining of purified NR1H3 protein (Cat# [TP323767]). The protein was produced from HEK293T cells transfected with NR1H3 cDNA clone (Cat# RC223767) using MegaTran 2.0 (Cat# [TT210002]).