

## Product datasheet for **RC223764**

### **PORCN (NM\_203475) Human Tagged ORF Clone**

#### **Product data:**

Product Type:	Expression Plasmids
Product Name:	PORCN (NM_203475) Human Tagged ORF Clone
Tag:	Myc-DDK
Symbol:	PORCN
Synonyms:	DHOF; FODH; MG61; PORC; PPN
Mammalian Cell Selection:	Neomycin
Vector:	pCMV6-Entry (PS100001)
E. coli Selection:	Kanamycin (25 ug/mL)



[View online »](#)

**ORF Nucleotide Sequence:**

>RC223764 representing NM\_203475  
 Red=Cloning site Blue=ORF Green=Tags(s)

TTTTGTAATACGACTCACTATAGGGCGGCCGGAATTCGTCGACTGGATCCGGTACCGAGGAGATCTGCC  
 GCC**CGGATCGCC**

ATGGCCACCTTTAGCCGCCAGGAATTTTCCAGCAGCTACTGCAAGGCTGTCTCCTGCCTACTGCCAGC  
 AGGGCCTTGACCAGATCTGGCTGCTCCTTGCCATCTGCCTCGCCTGCCGCTCCTCTGGAGGCTCGGGT  
 GCCATCTACCTGAAGCATGCAAGCACCCTGGCAGGCGGGTTCTCAGCCTCTACCACTTCTCCAGCTG  
 CACATGGTTTGGGTCGTGCTGCTCAGCCTCCTGTGCTACCTCGTGTCTCCTCTGCCGACATTCCTCCC  
 ATCGAGGCGTCTTCTATCCGTACCATCTCATCTACCTACTCATGGGTGAGATGCACATGGTAGACAC  
 CGTGACATGGCACAAGATGCGAGGGGCACAGATGATTGTGGCCATGAAGGCAGTGTCTCTGGGCTTCGAC  
 CTGGACCGGGGCGAGGTGGGTACGGTGCCTCGCCAGTGGAGTTCATGGGCTACCTCTACTCTCGTGGCA  
 CCATCGTCTTCGGGCCCTGGATATCCTTCCACAGCTACCTACAAGCTGTCCAAGGCCGCCACTGAGCTG  
 CCGGTGGCTGCAGAAGGTGGCCCGAGCCTGGCACTGGCCCTGCTGTGCCTTGTGTCTGCCACTTGGCTG  
 GGCCCTACCTCTCCCGTACTTCATCCCCCTCAACGGTGACCGCTCCTTCGCAACAAGAAACGCAAG  
 CCAGGGGCACCATGGTAAGGTGGCTGCGAGCCTACGAGAGTGTGTCTCCTTCCACTTCAGCAACTATTT  
 TGTGGGCTTTCTTCCGAGGCCACGGCCACGTTGGCGGGGCTGGCTTTACCGAGGAGAAGGATCACCTG  
 GAATGGGACCTGACGGTGTCCAAGCCACTGAATGTGGAGCTGCCTCGGTCAATGGTGAAGTTGTCAAA  
 GCTGGAACCTGCCATGTCTTATTGGCTAAATAACTATGTTTTCAAGAATGTCTCCGCCTGGGGACCTT  
 CTCGGCTGTGCTGGTACCTATGCAGCCAGCGCCCTCTACATGGCTTCACTTCCACCTGGCTGCGGTC  
 CTGCTGTCCCTGGCTTTTATCACTTACGTGGAGCATGTCTCCGGAAGCGCCTGGCTCGGATCCTCAGTG  
 CCTGTGTCTTGTCAAAGCGGTGCCCGCCAGACTGTTCCGACCAGCATCGTTGGGCTGGGGGTGCGAG  
 CTTAAACTTGCTTTTGGAGCTCTGGCCATCTTCCACCTGGCCTACCTGGGCTCCCTGTTTGATGTCGAT  
 GTGGATGACACCAGAGGAGCAGGGCTACGGCATGGCATACTGTCCCAAGTGGTCAGAGCTCAGCT  
 GGGCCAGTCACTGGTCACTTTTGGATGCTGGATCTTCTACCGTCTCATAGGC

**ACGCGT**ACGCGGCCGCTCGAGCAGAACTCATCTCAGAAGAGGATCTGGCAGCAAATGATATCCTGGATT  
 ACAAGGATGACGACGATAAGGTTTAA

**Protein Sequence:**

>RC223764 representing NM\_203475  
 Red=Cloning site Green=Tags(s)

MATFSRQEFFQQLQGCLLPTAQQGLDQIWLIIAICLACRLLWRLGLPSYKHAHVAGGFFSLYHFFQL  
 HMVWVLLSLLCYLVFLCRHSSHRGVFLSVTILIIYLLMGEMHMVDVTWHKMRGAQMIVAMKAVSLGFD  
 LDRGEVGTVPSPVEFMGYLYFVGTIVFGPWISFHSYLQAVQGRPLSCRWLQKVARSLALALLCLVLSTCV  
 GPYLFPPYFIPLNGDRLLRNKKRKARGTMVRWLRAYESAVSFHFSNYFVGFLEATATLAGAGFTEEKDHL  
 EWDLTVSKPLNVELPRSMVEVVTWNLPMSYWLNNYVFKNALRLGTFSAVLVTYAASALLHGFSLHAAV  
 LLSLAFITYVEHVLKRLARILSACVLSKRCPPDCSHQHRLGLGVRALNLLFGALAIIFHLAYLGSFLFDV  
 VDDTTEEQYGMAYTVHKWSELSWASHVTFGCWIFYRLIG

**TR**TRPLEQKLISEEDLAANDILDYKDDDDKV

**Chromatograms:**

[https://cdn.origene.com/chromatograms/mk6159\\_e06.zip](https://cdn.origene.com/chromatograms/mk6159_e06.zip)

**Restriction Sites:**

Sgfl-MluI

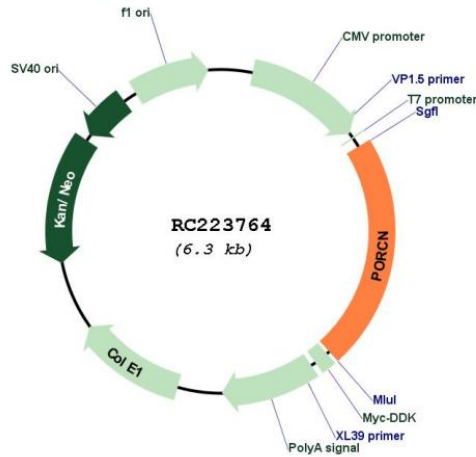
Cloning Scheme:

Cloning sites used for ORF Shutting:



\* The last codon before the Stop codon of the ORF

Plasmid Map:



ACCN: NM\_203475

ORF Size: 1383 bp

OTI Disclaimer: The molecular sequence of this clone aligns with the gene accession number as a point of reference only. However, individual transcript sequences of the same gene can differ through naturally occurring variations (e.g. polymorphisms), each with its own valid existence. This clone is substantially in agreement with the reference, but a complete review of all prevailing variants is recommended prior to use. [More info](#)

OTI Annotation: This clone was engineered to express the complete ORF with an expression tag. Expression varies depending on the nature of the gene.

Components: The ORF clone is ion-exchange column purified and shipped in a 2D barcoded Matrix tube containing 10ug of transfection-ready, dried plasmid DNA (reconstitute with 100 ul of water).

**Reconstitution Method:**

1. Centrifuge at 5,000xg for 5min.
2. Carefully open the tube and add 100ul of sterile water to dissolve the DNA.
3. Close the tube and incubate for 10 minutes at room temperature.
4. Briefly vortex the tube and then do a quick spin (less than 5000xg) to concentrate the liquid at the bottom.
5. Store the suspended plasmid at -20°C. The DNA is stable for at least one year from date of shipping when stored at -20°C.

**RefSeq:** [NM\\_203475.3](#)

**RefSeq Size:** 1761 bp

**RefSeq ORF:** 1386 bp

**Locus ID:** 64840

**UniProt ID:** [Q9H237](#)

**Cytogenetics:** Xp11.23

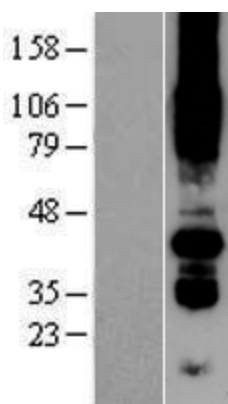
**Protein Families:** Transmembrane

**Protein Pathways:** Wnt signaling pathway

**MW:** 52.1 kDa

**Gene Summary:** This gene belongs to the evolutionarily conserved porcupine (Porc) gene family. Genes of the porcupine family encode endoplasmic reticulum proteins with multiple transmembrane domains. Porcupine proteins are involved in the processing of Wnt (wingless and int homologue) proteins. Disruption of this gene is associated with focal dermal hypoplasia, and the encoded protein has been implicated in cancer. Multiple alternatively spliced transcript variants encoding distinct isoforms have been observed. [provided by RefSeq, Aug 2013]

### Product images:



Western blot validation of overexpression lysate (Cat# [LY403716]) using anti-DDK antibody (Cat# [TA50011-100]). Left: Cell lysates from untransfected HEK293T cells; Right: Cell lysates from HEK293T cells transfected with RC223764 using transfection reagent MegaTran 2.0 (Cat# [TT210002]).