

Product datasheet for **RC223758**

CCDC122 (NM_144974) Human Tagged ORF Clone

Product data:

Product Type:	Expression Plasmids
Product Name:	CCDC122 (NM_144974) Human Tagged ORF Clone
Tag:	Myc-DDK
Symbol:	CCDC122
Mammalian Cell Selection:	Neomycin
Vector:	pCMV6-Entry (PS100001)
E. coli Selection:	Kanamycin (25 ug/mL)
ORF Nucleotide Sequence:	>RC223758 representing NM_144974 Red=Cloning site Blue=ORF Green=Tags(s)

TTTTGTAATACGACTCACTATAGGGCGGCCGGAATTCGTCGACTGGATCCGGTACCGAGGAGATCTGCC
GCC**CGATCGCC**

ATGTCAGACAACAAGAAAGGAAGAGTCAAGGATTCCTAAAGAAGATAACCAAGACACAAGTTCATTAG
CTGATGCTGTAGAGAAAGTTGCAAAGCAACAACATCACAAAGCATCAGAGATAGAAAAACAAAAAGGT
TCTGTTCAATTTGAAGAATGAATTCATGAGCTTGAAAAAGAAATAGCAGCTATCTCTGCAGAACTAAA
GAAACAGAAAGACAAATTTATCAACAAGATTCTGCCATAGAGAATACCAAATTCATTGTGATGCCTGG
AAACTCAAATCAAATCCTTACATTCAGAAAATGTAAGCTTAAATTTGACATAGAAACAGCCCAAGAAGA
TTTTGAGGAACACATGATAAAATATAATGCATATTATGCAAAAATAAAAGCACATAAAAAATAGTTTGGGG
GAAGTAGAGAGCAAATGGTCATTTATGACTGAACTCCATGAAAAGCGAGATTTTGTAAAAAATTAAGA
CAATGAAAGAAGAACTTATGCAAGATCTTCAAATCCAGGAGGGAACCGAATAACACAAGTACAGGAAGA
CATTACAACTTAAAGGATAAAATTATAACTGTAAAAGAATCTATCATTGAAAAACTTGTTTTCTTGAG
GAAGAAAAAAGACACATGAAAAATTAAGAAAAGAAATAGAGGTACAACATAAGAGGTATGATGCAATTC
TTAAGCGTTTGCATTGTCAGGTGAACAAGCTTCAGTCAAATAGACGACAGTGGCAATGGAACATTCAACA
ATTGAAAAAAGTGCAGCCGAATTAAGAAAATGCATTGGAATGCAAGAG

ACGCGTACGCGGCCGCTCGAGCAGAAACTCATCTCAGAAGAGGATCTGGCAGCAAATGATATCCTGGATT
ACAAGGATGACGACGATAAGGTTTAA



[View online »](#)

Protein Sequence: >RC223758 representing NM_144974
 Red=Cloning site Green=Tags(s)

MSDNKERKSQGFPKEDNQDTSSLADAVEKVAKQQSQASEIEKNKKVLFNLKNELEKEIAAISAEK
 ETERQIYQQDSAIENTKLHCDSLETQIKSLHSENVKLFDIETAQEDFEEHMIKYNAYYAKIKAHKNSLG
 EVESKWSFMTLHEKRDFVKKLTMTKEELMQDLQNPGGNRITQVQEDITNLKDKIITVKESIEKTCFLE
 EEKKTHEKLRKEIEVQHKRYDAILKRLHCQVNLQSNRRQWQWNIQQLEKTAELRKCIGMQE

TRTRPLEQKLISEEDLAANDILDYKDDDDKV

Chromatograms: https://cdn.origene.com/chromatograms/mk8047_a03.zip

Restriction Sites: SgfI-MluI

Cloning Scheme:



ACCN: NM_144974

ORF Size: 819 bp

OTI Disclaimer: The molecular sequence of this clone aligns with the gene accession number as a point of reference only. However, individual transcript sequences of the same gene can differ through naturally occurring variations (e.g. polymorphisms), each with its own valid existence. This clone is substantially in agreement with the reference, but a complete review of all prevailing variants is recommended prior to use. [More info](#)

OTI Annotation: This clone was engineered to express the complete ORF with an expression tag. Expression varies depending on the nature of the gene.

Components: The ORF clone is ion-exchange column purified and shipped in a 2D barcoded Matrix tube containing 10ug of transfection-ready, dried plasmid DNA (reconstitute with 100 ul of water).

Reconstitution Method:

1. Centrifuge at 5,000xg for 5min.
2. Carefully open the tube and add 100ul of sterile water to dissolve the DNA.
3. Close the tube and incubate for 10 minutes at room temperature.
4. Briefly vortex the tube and then do a quick spin (less than 5000xg) to concentrate the liquid at the bottom.
5. Store the suspended plasmid at -20°C. The DNA is stable for at least one year from date of shipping when stored at -20°C.

RefSeq: [NM_144974.5](#)

RefSeq Size: 3931 bp

RefSeq ORF: 822 bp

Locus ID: 160857

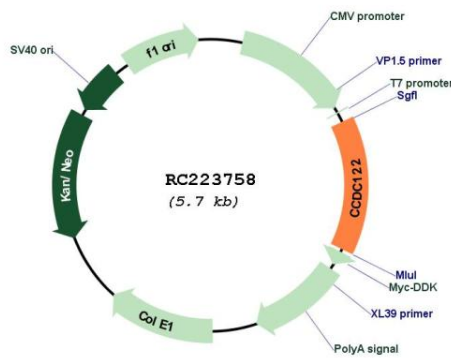
UniProt ID: [Q5T0U0](#)

Cytogenetics: 13q14.11

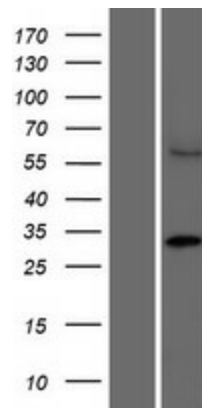
MW: 32 kDa

Gene Summary: This gene encodes a protein that contains a coiled-coil domain. Naturally occurring mutations in this gene are associated with leprosy. [provided by RefSeq, Apr 2017]

Product images:



Circular map for RC223758



Western blot validation of overexpression lysate (Cat# [LY408115]) using anti-DDK antibody (Cat# [TA50011-100]). Left: Cell lysates from untransfected HEK293T cells; Right: Cell lysates from HEK293T cells transfected with RC223758 using transfection reagent MegaTran 2.0 (Cat# [TT210002]).