

Product datasheet for **RC223742**

NET1 (NM_001047160) Human Tagged ORF Clone

Product data:

Product Type:	Expression Plasmids
Product Name:	NET1 (NM_001047160) Human Tagged ORF Clone
Tag:	Myc-DDK
Symbol:	NET1
Synonyms:	ARHGEF8; NET1A
Mammalian Cell Selection:	Neomycin
Vector:	pCMV6-Entry (PS100001)
E. coli Selection:	Kanamycin (25 ug/mL)



[View online »](#)

ORF Nucleotide Sequence:

>RC223742 representing NM_001047160
 Red=Cloning site Blue=ORF Green=Tags(s)

TTTTGTAATACGACTCACTATAGGGCGGCCGGGAATTCGTCGACTGGATCCGGTACCGAGGAGATCTGCC
 GCC**CGCATCGCC**

ATGGAGCCCGAGCTGGCGGCTCAGAAGCAGCCTCGACCGGGAGGCGAAGCCCGGGCCTCTGGGCTCA
 GCACGGAGGGAGCGACGGGGCCTTCGGCCGACACCTCCGGGTCGGAGCTGGACGGAGATGTTCCCTTCG
 GAGAGGCAGCTCCTTCACATTCTTAACACCTGGCCCACTGGGACTTCACTTTGAAAAGAAAACGCAGA
 GAGAAAGATGATGATGTTGAAGCCTTAGCAGCCTTGATCTGAAGGAGCCAAGCAATAAAAGAGTTCGAC
 CTCTGGCTCGTGTACGTCTTGCCAAATTTAATCTCTCTGTAAGAAATGGAGCTGTCAGACGTTTTGG
 TCAAACAATACAGTCATTTACCCTTCGTGGTGACCACAGATCCCCAGCCTCTGCCAGAAGTTTTCTAGC
 AGGTCAACAGTCCCAACACCCGCAAGAGAAGGAGCAGTGCCTGTGGTCAGAGATGCTGGACATCACCA
 TGAAGGAGTCTCTACCACCAGGAGATCAGACGGCAGGAGGCAATATATGAAATGTCCCGAGGTGAACA
 GGATTTAATTGAGGATCTCAAATTTGAAGAAAGCCTACCATGACCCCATGTTAAAGTTGTCCATCATG
 TCAAGAAGAGGAATCACACATATATTTGGTGATCTGGACTTACATACCTCTGCATGAAGATTTGTTGA
 CAAGAATAGGAGAAGCAACCAAGCCTGATGGAACAGTGGAGCAGATTGGTACATTCTCGTGAGCTGGTT
 ACCGCGCTTGAATGCCTACAGAGGTTACTGTAGTAACCAGCTGGCAGCCAAAGCTCTTCTTGATCAAAG
 AAACAGGATCCAAGAGTCCAAGACTTCTCCAGCGATGTCTCGAGTCTCCCTTCAGTCGAAAAGTATGATC
 TTTGGAGTTTCTAGATATCCCTCGAAGTCGCCTAGTCAAATACCTTTACTGTTAAAAGAAATCTTAA
 ACACACTCCAAAAGAGCACCCCTGATGTTAGCTTCTGGAGGATGCTATATTGATAATACAGGGAGTCCCT
 TCTGATATCAACTTGAAGAAAGGTGAATCCGAGTGCCAGTATTACATCGACAAGCTGGAGTACCTGGATG
 AAAAGCAGAGGGACCCCAAGAATCGAAGCGAGCAAAGTGTCTGTGCCATGGGGAGCTCGCAGCAAGAG
 TGGACATAAACTTTACATTTTCTGTTTCAAGACATCTTGGTTCTGACTCGGCCCTCACACGGAACGAA
 CGGCACTCTTACCAGTTTACCAGCAGCAATCCAGTCCAAGAGCTAGTCTTAGAAGACCTGCAGGATG
 GAGATGTGAGAATGGGAGGCTCCTTTCGAGGAGCTTTCAGTAACTCAGAGAAAGCTAAAAATATCTTTAG
 AATTTCGTTCCATGACCCTCTCCAGCCAGTCTCACACTCTGCAAGCCAATGACGTGTTCCACAAGCAG
 CAGTGGTTCAACTGTATTCGAGCGGCCATTGCCCTTCCAGTCGGCAGGCAGTCCACCTGAGCTGCAGG
 GCCTGCCGGAGCTGCACGAAGAGTGTGAGGGGAACCCCTCTGCGAGGAAACTCACAGCCAGAGGAG
 GGCATCCACAGTTTCCAGTGTACTCAGGTAGAAGTTGATGAAAACGCTTACAGATGTGGCTCTGGCATG
 CAGATGGCAGAGGACAGCAAGAGCTTAAAGACACACCAGACACAGCCCGCATCCGAAGAGCGAGGGACA
 AAGCCCTTCTGGTGGCAACCGAAAGAGACTTTGGTG

ACGCGTACGCGGCCGCTCGAGCAGAAACTCATCTCAGAAGAGGATCTGGCAGCAAATGATATCCTGGATT
 ACAAGGATGACGACGATAAGGTTTAA

Protein Sequence:

>RC223742 representing NM_001047160
 Red=Cloning site Green=Tags(s)

MEPELAAQKQPRPRRRSRASGLSTEGATGPSADTSGSELDRCSLRRGSSFTFLTPGPNWDFTLKRKR
 EKDDDVVSLSSLDLKEPSNKRVRPLARVTSANLISPVRNGAVRRFQTIQSFTLRGDHRSPASAQKFSS
 RSTVPTPAKRSSALWSEMLDITMKESLTTREIRRQEAIEYMSRGEQDLIEDLKLARKAYHDPMLKLSIM
 SEEELTHIFGDLDSYIPLHEDLLTRIGEATKPDGTVEQIGHILVSWLPRLNAYRGYCSNQLAAKALLDQK
 KQDPRVQDFLQRCLESPFSRKLDLWSFLDIPRSRLVKYPLLLKEILKHTPKHEHPDVQLLEDAIILIQV
 SDINLKKGESECYIIDKLEYLDEKQDRPRIEASKVLLCHGELRSKSGHKLYIFLFDILVLTRPVTRNE
 RHSYQVYRQPIPVQELVLEDLQDGDVVMGGSFRGAFSNEKAKNIFRIRFHDPSPAQSHTLQANDVFHKQ
 QWFNCIRAAIAPFQSAGSPPELQGLPELHEECEGNHPSARKLTAQRRASTVSSVTQVEVDENAYRCGSGM
 QMAEDSKSLKTHQTQPGIRRARDKALSGGKRKETLV

TRTRPLEQKLISEEDLAANDILDYKDDDDKV

Chromatograms:

https://cdn.origene.com/chromatograms/mg4896_b11.zip

UniProt ID: [Q7Z628](#)

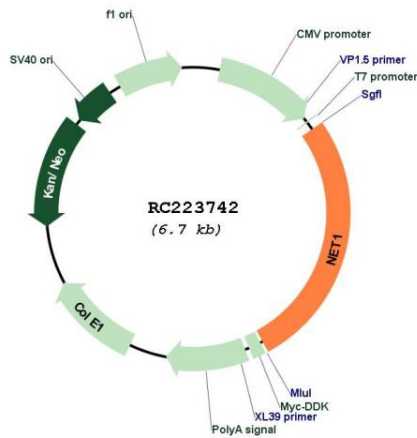
Cytogenetics: 10p15.1

Protein Families: Druggable Genome

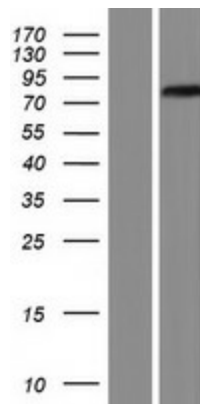
MW: 67.6 kDa

Gene Summary: This gene is part of the family of Rho guanine nucleotide exchange factors. Members of this family activate Rho proteins by catalyzing the exchange of GDP for GTP. The protein encoded by this gene interacts with RhoA within the cell nucleus and may play a role in repairing DNA damage after ionizing radiation. Pseudogenes of this gene are located on the long arms of chromosomes 1, 7 and 18. Alternative splicing results in multiple transcript variants that encode different protein isoforms. [provided by RefSeq, Jul 2012]

Product images:



Circular map for RC223742



Western blot validation of overexpression lysate (Cat# [LY420761]) using anti-DDK antibody (Cat# [TA50011-100]). Left: Cell lysates from untransfected HEK293T cells; Right: Cell lysates from HEK293T cells transfected with RC223742 using transfection reagent MegaTran 2.0 (Cat# [TT210002]).