

Product datasheet for RC223734

SCAP (NM_012235) Human Tagged ORF Clone

Product data:

Product Type:	Expression Plasmids
Product Name:	SCAP (NM_012235) Human Tagged ORF Clone
Tag:	Myc-DDK
Symbol:	SCAP
Mammalian Cell Selection:	Neomycin
Vector:	pCMV6-Entry (PS100001)
E. coli Selection:	Kanamycin (25 ug/mL)
ORF Nucleotide Sequence:	>RC223734 representing NM_012235 Red=Cloning site Blue=ORF Green=Tags(s)

TTTTGTAATACGACTCACTATAGGGCGGCCGGAATTCGTCGACTGGATCCGGTACCGAGGAGATCTGCC
GCC**CGATCGCC**

ATGACCCTGACTGAAAGGCTGCGTGAGAAGATATCTCGGGCCTTCTACAACCATGGGCTCCTCTGTGCAT
CCTATCCCATCCCATCATCCTCTTCACAGGGTTCTGCATCTTAGCCTGCTGCTACCCACTGCTGAAACT
CCCCTTGCCAGGAACAGGACCTGTGGAATTCACCACCCCTGTGAAGGATTACTCGCCCCACCTGTGGAC
TCTGACCGCAAACAAGGAGAGCCTACTGAGCAGCCTGAGTGGTATGTGGGTGCCCGGTGGCTTATGTCC
AGCAGATATTTGTGAAGTCTCAGTGTTCCTGGCACAAGAACCCTCTGGCAGTAGATGTATTTCTGTTT
ACCTTTGTCCCGGCATTCCAACCTGGTGGAGAGATCCGGAACACGTCGCTGAGAGACAGCTCTGGGATC
AGGAGCTTGAGGAGTTGTGTCTGCAAGTGACCGACCTGCTGCCAGGCCCTAGGAAGCTCAGGAACCTAC
TCCCTGAGCATGGATGCCTGCTGCTGTCCCTGGGAACCTCTGGCAGAATGACTGGGAACGCTTCCATGC
TGATCCTGACATCATTGGGACCATCCACCAGCAGGACCTAAAACCCTGCAGACTTCAGCCACACTCAA
GACTTGTATTTGGTGTCTCTGGGAAGTACAGCGGGGTGAGCCTCTACACCAGGAAGAGGATGGTCTCCT
ACACCATACCCTGGTCTTCCAGCACTACCATGCCAAGTTCCTGGGCAGCCTGCGTGCCCGCTGATGCT
TCTGCACCCAGCCCCAAGTGCAGCCTTCGGCGGAGAGCCTGGTCCACGTGCATTCAGGAGGAGATT
GGTGTGCTGAGCTCATCCCCCTTGTGACCACCTACATCATCTTGTGCTTGTGCTTACTTCTCCACGC
GGAAGATCGACATGGTCAAGTCCAAGTGGGGGCTGGCCCTGGCTGCCGTGGTCCAGTGCTCAGCTCGCT
GCTCATGTCTGTGGGACTCTGCACACTTTCGGCCTGACGCCACCCTCAATGGCGGCGAGATTTCCCC
TACCTTGTGGTGGTTATTTGGGTTAGAGAATGTGTTGGTGTCTACCAAGTCTGTGGTCTCAACCCCGGTAG
ACCTGGAGGTGAAGCTGCGGATCGCCAAAGGCCTAAGCAGCGAGAGCTGGTCCATCATGAAGAACATGGC
CACGGAGCTGGGCATCATCCTCATCGGCTACTTACCCTAGTGCCCGCATCCAGGAGTTCTGTCTCTTT
GCTGTGCTGGGCTGGTGTCTGACTTCTCCTCAGATGCTGTTTTCCACTGTCTGTCATTGACA
TTCGCCGATGGAGCTAGCAGACCTGAACAAGCAGTGCCTGAGGCTGCTGCCCTCAGCCAAAGCC
AGTGGGACAGCCAACGCCTACGAGCGGAGCTGGCTGTGAGGCGCTCCACCCCAACCATCAGTTG
CAGCCGTTCTCCTCCGAAACCTGCGGCTCCCCAAGAGGCTGCGTGTGTCTACTTCTGCGCCGACCC
GCCTGGCACAGCGCTCATCATGGCTGGCACCGTTGTCTGGATTGGCATCCTGGTATACAGACCCAGC



[View online »](#)

AGGGCTGCGCAACTACCTCGCTGCCAGGTGACGGAACAGAGCCATTGGGTGAGGGAGCCCTGGCTCCC
ATGCCCCGTGCCTAGTGGCATGCTGCCCCCAGCCACCCGGACCCTGCCTTCTCCATCTTCCCACCTGATG
CCCCTAAGCTACCTGAGAACCAGACGTCCGACGGCGAGTACCTGAGCGTGGAGGTCCAGCAGAGGTTGT
CCATGACAGCCCAGTCCCAGAGGTAACCTGGGGCCCTGAGGATGAGGAACTTTGGAGGAAATTTGCCTTC
CGCCACTGGCCGACGCTCTTACGCTATTACAACATCACACTGGCCAAGAGGTACATCAGCCTGTGCCCC
TCATCCCAGTACGCTCCGCTGAACCCGAGGGAGGCTCTGGAGGGCCGGCACCCCTCAGGACGGCCGACG
TGCTTGCCCCACCAGGGGCCATACCTGCTGGCACTGGGAAGCAGGACCCAAGGGCCACAGTGGGGT
CAGGCCCATGGAGACGTACGCTGTACAAGGTGGCGGCGCTGGGCTGGCCACCGGCATCGTCTTGGTGC
TGCTGCTGCTCTGCCTTACCGGTGCTATGCCCGCGCAACTACGGGCAGCTGGGTGGTGGGCCCGGGCG
GCGGAGGCGGGGAGCTGCCCTGCGACGACTACGGCTATGCGCCACCCGAGACGGAGATCGTGCCGCTT
GTGCTGCGCGCCACCTCATGGACATCGAGTGCCTGGCCAGCGACGGCATGCTGCTGGTGGAGCTGCTGCC
TGGCAGGCCACGTCTGCGTGTGGGACGCGCAGACCCGGGATTGCCTAACGCGCATTCCGCGCCCAGGACG
GCAGCGCCGGGACAGTGGCGTGGCAGCGGGCTTGAAGGCTCAGGAGAGCTGGGAACGACTTTCAGATGGT
GGGAAGGCTGGTCCAGAGGAGCCTGGGGACAGCCCTCCCCTGAGACACCCCGGGGCCCTCCGCGGC
CTTCCCTCTTCCGGGACAGCCTGACCTCACCTGCTTAATTGACACCAACTTTTTCAGCGCAGCCTCGGTC
CTCACAGCCCACTCAGCCCGAGCCCGGCACCCGGCGGTCTGTGGCCGCTCTCGGGACTCCCCAGGCTAT
GACTTCAGCTGCCTGGTGCAGCGGGTGTACCAGGAGGAGGGGCTGGCGGCGCTCTGCACACCAGCCCTGC
GCCACCCCTCGCCTGGGCCGGTGTGTCCAGGCCCTGAGGACGAGGGTGGCTCCCCGAGAAAGGCTC
CCCTTCCCTCGCCTGGGCCCCAGTGGCGAGGGTTCATCTGGAGCTTGGAGCTGCAGGGCAACCTCATC
GTGGTGGGGCGGAGCAGCGGCCGGCTGGAGGTGTGGGACGCCATTGAAGGGGTGCTGTGCTGCAGCAGCG
AGGAGGTCTCCTCAGGCATTACCGCTCTGGTGTCTTGGACAAAAGGATTGTGGCTGCACGGCTCAACGG
TTCCCTTGATTTCTTCTCCTTGGAGACCCACACTGCCCTCAGCCCCTGCAGTTTAGAGGGACCCAGGG
CGGGCAGTTCCCTGCCTCTCCAGTGTACAGCAGCAGCAGCAGACAGTGGCCTGTACCTGACCCACACAG
TGCCCTGTGCACACCAAAAACCCATCACAGCCCTGAAAGCCGCTGCTGGGCGCTTGGTACTGGGAGCCA
AGACCACACTGAGAGTGTCCGTCTGGAGGACTCGTGTGCCTCTTACCCTTCAGGGCCACTCAGGG
GCCATCACGACCGTGTACATTGACCAGACCATGGTGTGGCCAGTGGAGGACAAGATGGGGCCATCTGCC
TGTGGGATGTACTIONGACTGGCAGCCGGGTGAGCCATGTGTTTGTACCGTGGGGATGTCACCTCCCTTAC
CTGTACCACCTCCTGTGTCATCAGCAGTGGCCTGGATGACCTCATCAGCATCTGGGACCGCAGCACAGGC
ATCAAGTTCTACTCCATTAGCAGGACCTGGGCTGTGGTGAAGCTTGGGTGTCATCTCAGACAACCTGC
TGGTACTGGCGCCAGGGCTGTGTCTCCTTTGGGACCTAAACTACGGGGACCTGTTACAGACAGTCTA
CCTGGGAAGAAGCAGTGAAGGCCAGCCTGCCCGCCAGATCCTGGTGTGACAACGCTGCCATTGTCTGC
AACTTTGGCAGTGAAGCTCAGCCTGGTGTATGTGCCCTCTGTGCTGGAGAAGCTGGAC

ACGCGTACGCGGCCGCTCGAGCAGAACTCATCTCAGAAGAGGATCTGGCAGCAAATGATATCCTGGATT
ACAAGGATGACGACGATAAGGTTTAA

Protein Sequence: >RC223734 representing NM_012235
Red=Cloning site Green=Tags(s)

```
MTLTERLREKISRAFYNHGLLCASYPIPIILFTGFILACCYPLLKPLPGTGPVEFTTPVKDYSPPPVD
SDRKQGEPTPEWYVYVGGAPVAYVQQIFVKSSVFPWHKNLLAVDVFRRSPLSRAFQLEVEIRNHVLRDSSGI
RSLEELCLQVTDLLPGLRKLRLNLLPEHGCLLLSPGNFWQNDWERFHADPDIIGTIHQHEPKTLQTSATLK
DLLFGVPGKYSVSLYTRKRMVSYTITLVFQHYHAKFLGSLRRLMMLHPSNCSLRAESLVVHVHFKEEI
GVAELIPLVTTYIILFAYIYFSTRKIDMVKSKWGLALAAVVTVLSSLLMSVGLCTLFGLTPTLNGGEIFP
YLVVVVIGLENVLVLTQSVVSTPVDLEVKLRIAQGLSSESWSIMKNMATELGIIILIGYFTLVPAIQEFCLF
AVVGLVSDFFLQMLFFTTVLSDIRRMELADLNKRLPPEACLSAKPVGQPTRYERQLAVRPSTPHTITL
QPSSFRNRLPKRLRVVYFLARTRLAQRLIMAGTVVWIGILVYTDPAGLRNLYAAQVTEQSPLEGEALAP
MPVPSGMLPPSHDPAFSIFPPDAPKLPENQTSPEGSPERGPAEVDHSDSPVPEVTWGPEDDELWRKLSF
RHWPTLFSYYNITLAKRYSISLLPVIPVTLRLNPREALEGRHPQDGRSAWPPPGPIPAGHWEAGKPGGGV
QAHDGVTLYKVAALGLATGIVLVLLLLCLYRVLCPNRYGQLGGGPRRRRGELPCDDYGYAPPETEIVPL
VLRGHLMDEICLASDGMLLVSCCLAGHVCVWDAQTGDCLETRIPRGRQRRDSGVGSGLAEQESWERLSDG
GKAGPEEPPGSDPLRHRPRGPPPPSLFGDQPDLTCLIDTNFSAQPRSSQPTQPEPRHRAVCGRSRDSPGY
DFSCLVQRVYQEEGLAAVCTPALRPPSPGPVLSQAPEDEGGSPKSPSLAWAPSAEGSIWSELELQGNLI
VYGRSSGRLEVWDAIEGVLCCSSEEVSSEGITLVFLDKRIVAARLNGSLDFFSLETHALSPLQFRGTGP
RGSSPASPVYSSSDTVACHLTHTVPCAHQKPITALKAAAGRLVTGSQDHLRVRFLEDSCCLFTLQGHSG
AITTVYIDQTMVLASGGQDGAICLWDVLTGSRVSHVFAHRGDVLSLTCTTSCVSSGLDDLSIWDRTSG
IKFYSIQDLGCGASLGVISDNLLVTGGQGCVSFWDLNYGDLLQTYYLGNSEAQPARQILVLDNAAIVC
NFGSELSLVEVPSVLEKLD
```

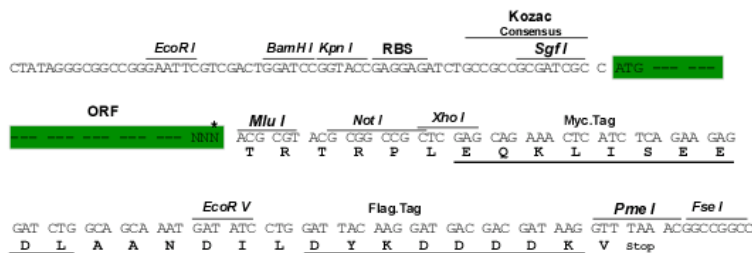
TRTRPLEQKLISEEDLAANDILDYKDDDDKVK

Chromatograms: https://cdn.origene.com/chromatograms/mk6684_g05.zip

Restriction Sites: Sgfl-MluI

Cloning Scheme:

Cloning sites used for ORF Shuttling:



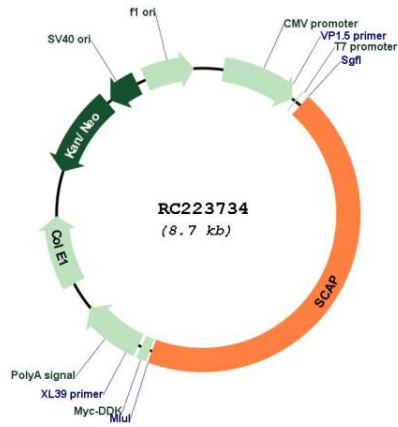
* The last codon before the Stop codon of the ORF

ACCN: NM_012235

ORF Size: 3837 bp

OTI Disclaimer:	The molecular sequence of this clone aligns with the gene accession number as a point of reference only. However, individual transcript sequences of the same gene can differ through naturally occurring variations (e.g. polymorphisms), each with its own valid existence. This clone is substantially in agreement with the reference, but a complete review of all prevailing variants is recommended prior to use. More info
OTI Annotation:	This clone was engineered to express the complete ORF with an expression tag. Expression varies depending on the nature of the gene.
Components:	The ORF clone is ion-exchange column purified and shipped in a 2D barcoded Matrix tube containing 10ug of transfection-ready, dried plasmid DNA (reconstitute with 100 ul of water).
Reconstitution Method:	<ol style="list-style-type: none">1. Centrifuge at 5,000xg for 5min.2. Carefully open the tube and add 100ul of sterile water to dissolve the DNA.3. Close the tube and incubate for 10 minutes at room temperature.4. Briefly vortex the tube and then do a quick spin (less than 5000xg) to concentrate the liquid at the bottom.5. Store the suspended plasmid at -20°C. The DNA is stable for at least one year from date of shipping when stored at -20°C.
RefSeq:	NM_012235.4
RefSeq Size:	4255 bp
RefSeq ORF:	3840 bp
Locus ID:	22937
UniProt ID:	Q12770
Cytogenetics:	3p21.31
Domains:	WD40
Protein Families:	Druggable Genome, Transcription Factors, Transmembrane
MW:	139.5 kDa
Gene Summary:	This gene encodes a protein with a sterol sensing domain (SSD) and seven WD domains. In the presence of cholesterol, this protein binds to sterol regulatory element binding proteins (SREBPs) and mediates their transport from the ER to the Golgi. The SREBPs are then proteolytically cleaved and regulate sterol biosynthesis. Alternative splicing results in multiple transcript variants. [provided by RefSeq, Feb 2016]

Product images:



Circular map for RC223734