

Product datasheet for RC223725

CCR3 (NM_178329) Human Tagged ORF Clone

Product data:

Product Type:	Expression Plasmids
Product Name:	CCR3 (NM_178329) Human Tagged ORF Clone
Tag:	Myc-DDK
Symbol:	CCR3
Synonyms:	CC-CKR-3; C C CKR3; CD193; CKR 3; CKR3; CMKBR3
Mammalian Cell Selection:	Neomycin
Vector:	pCMV6-Entry (PS100001)
E. coli Selection:	Kanamycin (25 ug/mL)
ORF Nucleotide Sequence:	>RC223725 ORF sequence Red=Cloning site Blue=ORF Green=Tags(s)

TTTTGTAATACGACTCACTATAGGGCGGCCGGAATTCGTCGACTGGATCCGGTACCGAGGAGATCTGCC
GCC**CGATCGCC**

ATGACAACCTCACTAGATACAGTTGAGACCTTTGGTACCACATCCTACTATGATGACGTGGGCCTGCTCT
GTGAAAAAGCTGATACCAGAGCACTGATGGCCAGTTTGTGCCCCGCTGTACTCCCTGGTGTCTACTGT
GGGCCTCTGGGCAATGTGGTGGTGGTATGATCCTCATAAAAACAGGAGGCTCCGAATTATGACCAAC
ATCTACCTGCTCAACCTGGCCATTTCCGACCTGCTCTTCTCGTCACCCCTCCATTCTGGATCCACTATG
TCAGGGGGCATAACTGGGTTTTGGCCATGGCATGTGTAAGCTCCTCTCAGGGTTTTATCACACAGGCTT
GTACAGCGAGATCTTTTCATAATCCTGCTGACAATCGACAGGTACCTGGCCATTGTCATGCTGTGTTT
GCCCTTCGAGCCCGGACTGTCACTTTTGGTGTATCACCAGCATCGTCACCTGGGCCTGGCAGTGTAG
CAGCTCTTCTGAATTTATCTTCTATGAGACTGAAGAGTTGTTTGAAGAGACTCTTTGCAGTGTCTTTA
CCCAGAGGATACAGTATATAGCTGGAGGCATTTCCACACTCTGAGAAATGACCATCTTCTGTCTGTTCTC
CCTCTGCTCGTTATGGCCATCTGCTACACAGGAATCATAAAACGCTGCTGAGGTGCCCCAGTAAAAAA
AGTACAAGGCCATCCGGCTCATTTTTGTCATCATGGCGGTGTTTTTCATTTCTGGACACCCCTACAATGT
GGCTATCCTTCTCTTCTATCAATCCATCTTATTTGAAATGACTGTGAGCGGAGCAAGCATCTGGAC
CTGGTCATGCTGGTACAGAGGTGATCGCCTACTCCCCTGCTGCATGAACCCGGTGATCTACGCCCTTG
TTGGAGAGAGGTTCCGGAAGTACCTGCGCACTTCTTCCACAGGCACTTGCTCATGCACCTGGGCAGATA
CATCCCATTCTTCTTAGTGAAGCTGAAAGAACCAGCTCTGTCTCTCCATCCACAGCAGAGCCGGAA
CTCTCTATTGTGTTT

ACGCGTACGCGGCCGCTCGAGCAGAAACTCATCTCAGAAGAGGATCTGGCAGCAATGATATCCTGGATT
ACAAGGATGACGACGATAAGGTTAA



[View online »](#)

Protein Sequence: >RC223725 protein sequence
 Red=Cloning site Green=Tags(s)

MTTSLDVTETFGTTSYYDDVGLLCEKADTRALMAQFVPPLYSLVFTVGLLGNVVVVMILIKYRRLRIMTN
 IYLLNLAISDLLFLVTLPFWIHYVRGHNVVFGHGMCKLLSGFYHTGLYSEIFFIILLTIDRYLAIHVAVF
 ALRARTVTFGVITSIVTWGLAVLAALPEFIFYETEELFEETLCSALYPEDTVYSWRHFHTLRMTIFCLVL
 PLLVMAICYGTGIKTLRLCPSKKKYKAIIRLIFVIMAVFFIFWTPYNVAILLSSYQSILFGNDCERSKHL
 LVMVLVEVIAYSHCCMNPVIYAFVGERFRKYLRHFFHRHLLMHLGRYIPFLPSEKLERTSSVSPSTAEPE
 LSIVF

TRTRPLEQKLISEEDLAANDILDYKDDDDKV

Chromatograms: https://cdn.origene.com/chromatograms/mk6377_c02.zip

Restriction Sites: SgfI-MluI

Cloning Scheme:



ACCN: NM_178329

ORF Size: 1065 bp

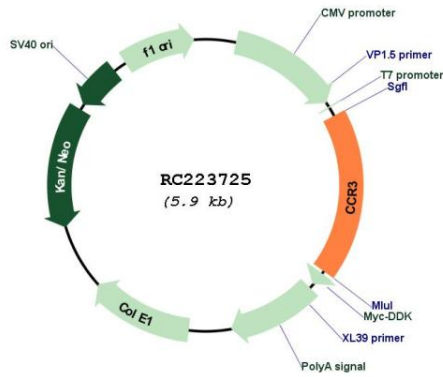
OTI Disclaimer: The molecular sequence of this clone aligns with the gene accession number as a point of reference only. However, individual transcript sequences of the same gene can differ through naturally occurring variations (e.g. polymorphisms), each with its own valid existence. This clone is substantially in agreement with the reference, but a complete review of all prevailing variants is recommended prior to use. [More info](#)

OTI Annotation: This clone was engineered to express the complete ORF with an expression tag. Expression varies depending on the nature of the gene.

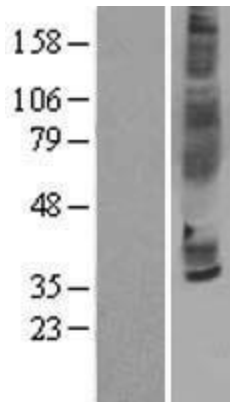
Components: The ORF clone is ion-exchange column purified and shipped in a 2D barcoded Matrix tube containing 10ug of transfection-ready, dried plasmid DNA (reconstitute with 100 ul of water).

Reconstitution Method:	<ol style="list-style-type: none">1. Centrifuge at 5,000xg for 5min.2. Carefully open the tube and add 100ul of sterile water to dissolve the DNA.3. Close the tube and incubate for 10 minutes at room temperature.4. Briefly vortex the tube and then do a quick spin (less than 5000xg) to concentrate the liquid at the bottom.5. Store the suspended plasmid at -20°C. The DNA is stable for at least one year from date of shipping when stored at -20°C.
RefSeq:	NM_178329.3
RefSeq Size:	1717 bp
RefSeq ORF:	1068 bp
Locus ID:	1232
UniProt ID:	P51677
Cytogenetics:	3p21.31
Protein Families:	Druggable Genome, GPCR, Transmembrane
Protein Pathways:	Chemokine signaling pathway, Cytokine-cytokine receptor interaction
MW:	41 kDa
Gene Summary:	<p>The protein encoded by this gene is a receptor for C-C type chemokines. It belongs to family 1 of the G protein-coupled receptors. This receptor binds and responds to a variety of chemokines, including eotaxin (CCL11), eotaxin-3 (CCL26), MCP-3 (CCL7), MCP-4 (CCL13), and RANTES (CCL5). It is highly expressed in eosinophils and basophils, and is also detected in TH1 and TH2 cells, as well as in airway epithelial cells. This receptor may contribute to the accumulation and activation of eosinophils and other inflammatory cells in the allergic airway. It is also known to be an entry co-receptor for HIV-1. This gene and seven other chemokine receptor genes form a chemokine receptor gene cluster on the chromosomal region 3p21. Alternatively spliced transcript variants have been described. [provided by RefSeq, Sep 2009]</p>

Product images:



Circular map for RC223725



Western blot validation of overexpression lysate (Cat# [LY405966]) using anti-DDK antibody (Cat# [TA50011-100]). Left: Cell lysates from untransfected HEK293T cells; Right: Cell lysates from HEK293T cells transfected with RC223725 using transfection reagent MegaTran 2.0 (Cat# [TT210002]).