

Product datasheet for **RC223724**

MEIS2 (NM_170675) Human Tagged ORF Clone

Product data:

Product Type:	Expression Plasmids
Product Name:	MEIS2 (NM_170675) Human Tagged ORF Clone
Tag:	Myc-DDK
Symbol:	MEIS2
Synonyms:	CPCMR; HsT18361; MRG1
Mammalian Cell Selection:	Neomycin
Vector:	pCMV6-Entry (PS100001)
E. coli Selection:	Kanamycin (25 ug/mL)



[View online »](#)

ORF Nucleotide Sequence:

>RC223724 representing NM_170675
 Red=Cloning site Blue=ORF Green=Tags(s)

TTTTGTAATACGACTCACTATAGGGCGGCCGGAATTCGTGACTGGATCCGGTACCGAGGAGATCTGCC
 GCC**CGGATCGCC**

ATGGCGCAAAGGTACGATGAGCTGCCCCATTACGGCGGGATGGACGGAGTAGGGTTCCCGCTTCCATGT
 ACGGAGACCCCTCACGCGCCGCGCCGATCCCCCGTTACCACCTGAACCACGGCCGCCGCTCCACGC
 CACACAGCACTACGGCGCGCACGCCCGCACCCCAATGTCATGCCGCGCCAGTATGGGATCCGCTGTCAAC
 GACGCCTTGAAGCGGGACAAGGACGCGATCTATGGGCACCCGTTGTTTCTCTGTAGCTCTGGTCTTTG
 AGAAGTGCAGCTGGCGACCTGCACTCCCCGGAACTGGAGTGGCTGGCGGAGACGTCTGCTCCTCCGA
 CTCCTTCAACGAGGACATCGCGTCTTCGCCAAGCAGGTCGCGCCGAAAAGCCACTTTTTCTCAAAT
 CCAGAGCTGGACAATTTGATGATACAAGCAATACAAGTACTAAGGTTTCATCTTTGGAGTTAGAAAAGG
 TCCACGAACTGTGCGATAACTTCTGCCACCGATACATTAGCTGTTGAAGGGGAAAATGCCATCGACCT
 CGTCATTGATGAAAGAGACGGCAGCTCCAAGTCAGATCATGAAGAACTTTCAGGCTCCTCCACAAATCTC
 GCTGACCATAACCTTCTTCTTGGCGAGACCACGATGATGCAACCTCAACCCACTCAGCAGGCACCCAG
 GGCCCTCCAGTGGGGGCCATGCTTCCCAGAGCGGAGACAACAGCAGTGAAGCAAGGGGATGGTTTAGACAA
 CAGTGTAGCTTACCTGGTACAGGTGACGATGATGATCCGGATAAGGACAAAAACGCCAGAAGAAAAGA
 GGCATTTTCCCCAAAGTAGCAACAAATATCATGAGAGCATGGCTCTTCCAGCATCTCACACATCCGTACC
 CTTCCGAAGAGCAGAAGAAACAGTTAGCGCAAGACACAGGACTTACAATTCTCCAAGTAAACAACCTGGTT
 TATTAATGCCAGAAGAAGATAGTACAGCCATGATTGACCAGTCAAATCGAGCAGGTTTTCTTCTTGAT
 CCTTCAGTGAGCCAAGGAGCAGCATATAGTCCAGAGGTCAGCCCATGGGAGCTTTGTGTTGGATGGTC
 AGCAACACATGGGGATCCGGCTGCAGGTTTGCAGAGCATGCCAGGGGACTACGTTTCTCAGGGTGGTCC
 TATGGGAATGAGTATGGCACAGCCAAGTTACACTCCTCCCAGATGACCCACACCCCTACTCAATTAAGA
 CATGGACCCCAATGCATTCATATTTGCCAAGCCATCCCCACCACCCAGCCATGATGATGCACGGAGGAC
 CCCCTACCACCTGGAATGACTATGTCAGCACAGAGCCCAACAATGTTAAATTCTGTAGATCCCAATGT
 TGGCGGACAGGTTATGGACATTCATGCCCAA

ACGCGTACGCGGCCGCTCGAGCAGAACTCATCTCAGAAGAGGATCTGGCAGCAATGATATCCTGGATT
 ACAAGGATGACGACGATAAGGTTTAA

Protein Sequence:

>RC223724 representing NM_170675
 Red=Cloning site Green=Tags(s)

MAQRYDELPHYGGMDVGVGPASMYGDPHAPRPIPPVHHLNHGPPLHATQHYGAHAPHNPVMPASMGSAVN
 DALKRDKDAIYGHPLFLLALVFEKCELATCTPREPGVAGGDVCSDFSFNEDIAVFAKQVRAEKPLFSSN
 PELDNLMIQAIQVLRFHLLLELEKVELCDNFCHRYISCLKGKMPIDLVIDERDGSKSDHEELSGSSTNL
 ADHNPSSWRDHDATSTHSAGTPGPSSGGHASQSGDNSSEQDGLDNSVASPGTGDDDDPKDKRQKKR
 GIFPKVATNIMRAWLFQHLTHPYPSEEQKKQLAQDTGLTILQVNNWFINARRRIVQPMIDQSNRAGFLLD
 PSVSQGAAYSPEGQPMGSFVLDGQQHMGIRPAGLQSMPGDYVSQGGPMGMSMAQPSYTPPQMPHPTQLR
 HGPPMHSYLPSPHHPAMMMHGGPPTHGTMMSAQSPTMLNSVDPNVGGQVMDIHAQ

TRTRPLEQKLISEEDLAANDILDYKDDDDKV

Chromatograms:

https://cdn.origene.com/chromatograms/mg5073_d05.zip

Restriction Sites:

Sgfl-Mlul

Cloning Scheme:

Cloning sites used for ORF Shutting:



* The last codon before the Stop codon of the ORF

ACCN: NM_170675

ORF Size: 1431 bp

OTI Disclaimer: The molecular sequence of this clone aligns with the gene accession number as a point of reference only. However, individual transcript sequences of the same gene can differ through naturally occurring variations (e.g. polymorphisms), each with its own valid existence. This clone is substantially in agreement with the reference, but a complete review of all prevailing variants is recommended prior to use. [More info](#)

OTI Annotation: This clone was engineered to express the complete ORF with an expression tag. Expression varies depending on the nature of the gene.

Components: The ORF clone is ion-exchange column purified and shipped in a 2D barcoded Matrix tube containing 10ug of transfection-ready, dried plasmid DNA (reconstitute with 100 ul of water).

Reconstitution Method:

1. Centrifuge at 5,000xg for 5min.
2. Carefully open the tube and add 100ul of sterile water to dissolve the DNA.
3. Close the tube and incubate for 10 minutes at room temperature.
4. Briefly vortex the tube and then do a quick spin (less than 5000xg) to concentrate the liquid at the bottom.
5. Store the suspended plasmid at -20°C. The DNA is stable for at least one year from date of shipping when stored at -20°C.

RefSeq: [NM_170675.5](#)
RefSeq Size: 3625 bp

RefSeq ORF: 1434 bp

Locus ID: 4212

UniProt ID: [O14770](#)
Cytogenetics: 15q14

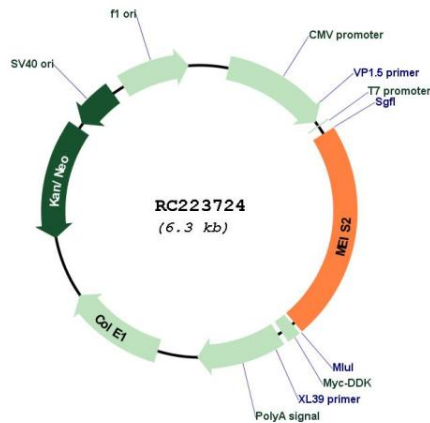
Domains: homeobox

Protein Families: Transcription Factors

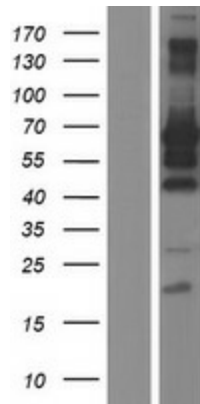
MW: 51.6 kDa

Gene Summary: This gene encodes a homeobox protein belonging to the TALE ('three amino acid loop extension') family of homeodomain-containing proteins. TALE homeobox proteins are highly conserved transcription regulators, and several members have been shown to be essential contributors to developmental programs. Multiple transcript variants encoding distinct isoforms have been described for this gene. [provided by RefSeq, Jul 2008]

Product images:



Circular map for RC223724



Western blot validation of overexpression lysate (Cat# [LY406903]) using anti-DDK antibody (Cat# [TA50011-100]). Left: Cell lysates from untransfected HEK293T cells; Right: Cell lysates from HEK293T cells transfected with RC223724 using transfection reagent MegaTran 2.0 (Cat# [TT210002]).