

Product datasheet for **RC223721**

Casein (CSN1S1) (NM_001890) Human Tagged ORF Clone

Product data:

Product Type: Expression Plasmids
Product Name: Casein (CSN1S1) (NM_001890) Human Tagged ORF Clone
Tag: Myc-DDK
Symbol: Casein
Synonyms: CASA; CSN1
Mammalian Cell Selection: Neomycin
Vector: pCMV6-Entry (PS100001)
E. coli Selection: Kanamycin (25 ug/mL)
ORF Nucleotide Sequence: >RC223721 ORF sequence
Red=Cloning site Blue=ORF Green=Tags(s)

TTTTGTAATACGACTCACTATAGGGCGGCCGGAATTCGTCGACTGGATCCGGTACCGAGGAGATCTGCC
GCC**CGGATCGCC**

ATGAGGCTTCTCATTCTCACCTGTCTTGTGGCTGTTGCTCTTGCCAGGCCTAACTTCCTCTTAGATACC
CAGAACGCCTTCAGAATCCATCAGAGAGCAGTGAGCCTATACCATTAGAATCAAGAGAGGAATACATGAA
TGGTATGAACAGGCAGAGAAACATTCTGAGAGAAAACAGACTGATGAAATCAAGGATACTAGGAATGAG
TCTACTCAGAAGTGTGTGGCAGAGCCTGAGAAGATGGAATCCAGCATCAGTTCATCGAGTGAGGAAA
TGTCTCTCAGTAAGTGTGCGGAACAGTTTTGTAGACTGAACGAATACAACCAACTTCAGCTGCAAGCTGC
CCATGCCCAGGAGCAAATTCGCAGAATGAATGAAAACAGCCATGTCCAAGTGCCTTCCAGCAGCTCAAC
CAACTTGCTGCCTACCCCTATGCTGTTTGGTACTATCCACAAATCATGCAGTATGTTCTTTCCACCGT
TTTCCGACATCTCCAATCCCCTGCTCATGAAAATTATGAAAAAATAACGTCATGCTACAGTGG

ACGCGTACGCGGCCGCTCGAGCAGAACTCATCTCAGAAGAGGATCTGGCAGCAAATGATATCCTGGATT
ACAAGGATGACGACGATAAGGTTTAA

Protein Sequence: >RC223721 protein sequence
Red=Cloning site Green=Tags(s)

MRLIL TCLVAVALARPKLPLRYPERLQNPSESSEPIPLESREEYMGMRQRNLRKQTDKIDTRNE
STQNCVVAEPEKMESSISSSEEMSLSKCAEQFCRLNEYNQLQLQAAHAQEQIRRMENSHVQVPPFQQLN
QLAAYPYAVWYYPQIMQYVFPFSDISNPTAHENYEKNNVMLQW

TRTRPLEQKLISEEDLAANDILDYKDDDDKV

Chromatograms: https://cdn.origene.com/chromatograms/mk6440_c09.zip



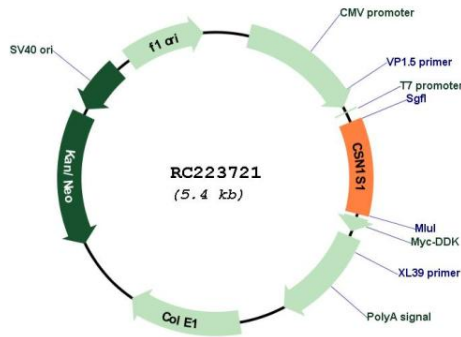
Cytogenetics: 4q13.3

Protein Families: Secreted Protein

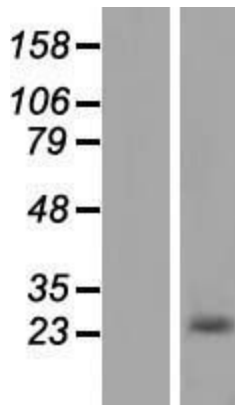
MW: 21.7 kDa

Gene Summary: Important role in the capacity of milk to transport calcium phosphate.[UniProtKB/Swiss-Prot Function]

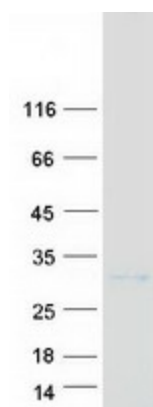
Product images:



Circular map for RC223721



Western blot validation of overexpression lysate (Cat# [LY419687]) using anti-DDK antibody (Cat# [TA50011-100]). Left: Cell lysates from untransfected HEK293T cells; Right: Cell lysates from HEK293T cells transfected with RC223721 using transfection reagent MegaTran 2.0 (Cat# [TT210002]).



Coomassie blue staining of purified CSN1S1 protein (Cat# [TP323721]). The protein was produced from HEK293T cells transfected with CSN1S1 cDNA clone (Cat# RC223721) using MegaTran 2.0 (Cat# [TT210002]).