

Product datasheet for **RC223719**

C3orf43 (SMCO1) (NM_001077657) Human Tagged ORF Clone

Product data:

Product Type:	Expression Plasmids
Product Name:	C3orf43 (SMCO1) (NM_001077657) Human Tagged ORF Clone
Tag:	Myc-DDK
Symbol:	C3orf43
Synonyms:	C3orf43
Mammalian Cell Selection:	Neomycin
Vector:	pCMV6-Entry (PS100001)
E. coli Selection:	Kanamycin (25 ug/mL)
ORF Nucleotide Sequence:	>RC223719 ORF sequence Red=Cloning site Blue=ORF Green=Tags(s)

TTTTGTAATACGACTCACTATAGGGCGCCGGGAATTCGTCGACTGGATCCGGTACCGAGGAGATCTGCC
GCC**CGATCGCC**

ATGAACAATGAAACCACAACCCTGATATCCTTGAAGGAGGCAATGAAAAGAGTAGACCACAACTCCAAG
CGTTAGAAACACAGTTCAAAGAAGTACTTACCAAGGATAACCTGATGCAGAAATTCGAACATCATAG
TAAGGCTTTGGCAAGCCAAGCAGCCCAAGATGAGATGTGGACAGCAGTTCGGGCACTCCAGCTCACTTCA
ATGGAATTGAATATTTTATACAGCTACGTCATTGAAGTACTTATCTGCTTGCATACTCGTGTGCTTGA
AGCTGCCAGACCTGGTGAGAGGTCTTCCAACCTTAGCCTCTGACTCAGAAGAAAAGTTAAGAACAAGCG
CGTTAGAGTTGTATGGGAGTCCATACTGGAGGAGTGTGGGCTGCAAGAAGGAGACATCACAGCACTTTGT
ACCTTCTTTATTGCACGTGGTAACAAGGCAGAACAATACTGCTAAAAGTGAAGGAGATGTACATCAGGG
ATGTCACGTTCTAATTACTAACATGGTAAAGAACCAGGCTCTGCAGGACAGTTTGTGAGGGCTGTGCA
GGTAATTGAGAAGGGAAAGCAGTTAGGACCCCTGAAAAGCAAAAAGTCATCCCTCGAAGAGTTGATACCA
TCTGTCAAAAAC

ACGCGTACGCGGCGCTCGAGCAGAACTCATCTCAGAAGAGGATCTGGCAGCAATGATATCTGGATT
ACAAGGATGACGACGATAAGGTTTAA



[View online »](#)

Protein Sequence: >RC223719 protein sequence
 Red=Cloning site Green=Tags(s)

MNNETTLISLKEAMKRVDHKLQALETQFKELDFTKDNLMOQKFEHHSKALASQAAQDEMWTAVRALQLTS
 MELNILYSYVIEVLICLHTRVLEKLPDLVRGLPTLASVLRKVKKNRVRVWVESILEECGLQEGDITALC
 TFFIARGNKAEHYAKVRQMYIRDVTLITNMVKNQALQDSSLRAVQVIEKGKAVRTPEKQKSSLEELIP
 SVKN

TRTRPLEQKLISEEDLAANDILDYKDDDDKV

Restriction Sites: SgfI-MluI

Cloning Scheme:

Cloning sites used for ORF Shuttling:



* The last codon before the Stop codon of the ORF

ACCN: NM_001077657

ORF Size: 642 bp

OTI Disclaimer: The molecular sequence of this clone aligns with the gene accession number as a point of reference only. However, individual transcript sequences of the same gene can differ through naturally occurring variations (e.g. polymorphisms), each with its own valid existence. This clone is substantially in agreement with the reference, but a complete review of all prevailing variants is recommended prior to use. [More info](#)

OTI Annotation: This clone was engineered to express the complete ORF with an expression tag. Expression varies depending on the nature of the gene.

Components: The ORF clone is ion-exchange column purified and shipped in a 2D barcoded Matrix tube containing 10ug of transfection-ready, dried plasmid DNA (reconstitute with 100 ul of water).

Reconstitution Method:

1. Centrifuge at 5,000xg for 5min.
2. Carefully open the tube and add 100ul of sterile water to dissolve the DNA.
3. Close the tube and incubate for 10 minutes at room temperature.
4. Briefly vortex the tube and then do a quick spin (less than 5000xg) to concentrate the liquid at the bottom.
5. Store the suspended plasmid at -20°C. The DNA is stable for at least one year from date of shipping when stored at -20°C.

RefSeq: [NM_001077657.3](#)

RefSeq Size: 1810 bp

RefSeq ORF: 645 bp

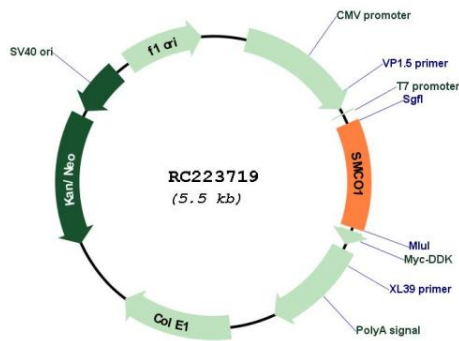
Locus ID: 255798

UniProt ID: [Q147U7](#)

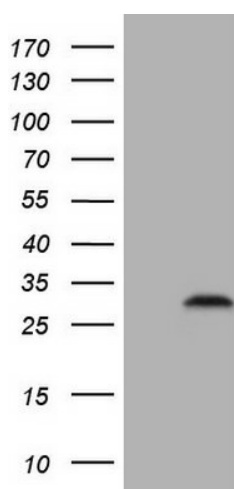
Cytogenetics: 3q29

MW: 24.6 kDa

Product images:



Circular map for RC223719



HEK293T cells were transfected with the pCMV6-ENTRY control (Cat# [PS100001], Left lane) or pCMV6-ENTRY C3orf43 (Cat# RC223719, Right lane) cDNA for 48 hrs and lysed. Equivalent amounts of cell lysates (5 ug per lane) were separated by SDS-PAGE and immunoblotted with anti-C3orf43 (Cat# [TA808418])(1:2000). Positive lysates [LY421471] (100ug) and [LC421471] (20ug) can be purchased separately from OriGene.