

## Product datasheet for RC223714

### CAVIN4 (NM\_001018116) Human Tagged ORF Clone

#### Product data:

Product Type:	Expression Plasmids
Product Name:	CAVIN4 (NM_001018116) Human Tagged ORF Clone
Tag:	Myc-DDK
Symbol:	CAVIN4
Synonyms:	cavin-4; MURC
Mammalian Cell Selection:	Neomycin
Vector:	pCMV6-Entry (PS100001)
E. coli Selection:	Kanamycin (25 ug/mL)
ORF Nucleotide Sequence:	>RC223714 representing NM_001018116 Red=Cloning site Blue=ORF Green=Tags(s)

TTTTGTAATACGACTCACTATAGGGCGGCCGGAATTCGTCGACTGGATCCGGTACCGAGGAGATCTGCC  
GCC**CGATCGCC**

ATGGAACATAATGGGTCTGCTTCAAATGCTGATAAAATCCACCAGAATCGCCTGTCGAGTGTTACAGAAG  
ATGAAGACCAAGACGCTGCTCTTACCATTGTGACTGTGCTGGACAAAGTAGCCTCCATCGTGACAGTGT  
GCAGGCAAGCCAGAAGAGAATAGAAGAGAGACACAGGGAAATGGAAAATGCCATAAAATCCGTCCAGATT  
GACCTGTTGAAGCTTTCACAGTCGCATAGCAATACAGGGCATATCATTAACAAATGTTTGAGAAAACCC  
GAAAAGTTAGTGCTCACATTAAGATGTGAAAGCCGGGTGGAGAAGCAAAATTCATGTTAAAAAAGT  
TGAAGTCAAGCAAGAGGAAATAATGAAGAAAAACAAATTCGCGTGGTAATATCCAGGAGAAGTTTCGG  
TGTCGACATCCCTGTCTGTTGTTAAAGACAGAAACCTAACTGAGAACCAAGAAGAGGATGATGATGATA  
TCTTTGATCCCCAGTAGATCTGTCTTCGGATGAAGAATATTATGTTGAAGAAAGCAGATCTGCCAGGCT  
TAGGAAGTCAGGCAAGGAGCACATTGATAATATCAAGAAGGCATTTTCCAAAGAAAACATGCAGAAGACA  
CGGCAGAATCTTGACAAGAAAGTGAACAGAATTAGAACTAGAATAGTGACCCCGGAGAGGAGAGAGAGGC  
TAAGGCAGTCAGGAGAGAGGCTGAGACAGTCAGGGGAGAGGCTGAGACAGTCAGGGGAGAGGTTTAAAGAA  
ATCTATTTCTAATGCAGCTCCCTCAAAGGAAGCTTTTAAAGATGCGCAGCCTCAGGAAAGGTAAGGACCGA  
ACAGTGGCTGAAGGTGAGGAATGTCCAGGGAGATGGGTGTGGACATCATTGCCAGGAGCGAGTCTCTGG  
GCCCATCAGTGAGCTCTACTCTGATGAGCTCAGTGAACCAGAACACGAGGACGCCAGGCCGGTGTATCC  
TCCCCATGAAGGAAGGAAATCCCCACCCCGAGCCTTTAAAAGTTACTTTTAAATCTCAGGTGAAAGTA  
GAGGATGATGAATCTCTTTGTTAGATTTAAAGCACTCATCG

**ACGCGT**ACGCGGCCGCTCGAGCAGAAACTCATCTCAGAAGAGGATCTGGCAGCAAATGATATCCTGGATT  
ACAAGGATGACGACGATAAGGTTTAA



[View online »](#)

**Protein Sequence:** >RC223714 representing NM\_001018116  
Red=Cloning site Green=Tags(s)

MEHNGSASNADKIHQNRLLSSVTEDEDQDAALTIVTVLTKVASIVDSVQASQKRIEERHREMENAIAKSVQI  
 DLLKLSQSHSNTGHIINKLFEKTRKVSAAHKDKVKARVEKQIHHVKKVEVKQEEIMKKNKFRVVFQEKFR  
 CPTSLSVVKDRNLTENQEEDDDIFDPPVDLSSDEEYVVEESRSARLRKSGKEHIDNIKKAFSKENMQKT  
 RQNLDKKVNRIIRTRIVTPERRERLRQSGERLRQSGERLRQSGERFKKSI SNAAPSKEAFKMRSLRKGKDR  
 TVAEGEECAREMGVDIIARSESLGPISSELYSDELSEPEHEAARPVYPPHEGREIPTPEPLKVTFKSQVKY  
 EDDESLLLDLKHSS

TRTRPLEQKLISEEDLAANDILDYKDDDDKVK

**Chromatograms:** [https://cdn.origene.com/chromatograms/mk8046\\_h04.zip](https://cdn.origene.com/chromatograms/mk8046_h04.zip)

**Restriction Sites:** SgfI-MluI

**Cloning Scheme:**



**ACCN:** NM\_001018116

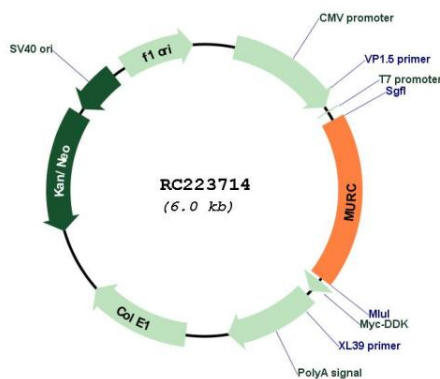
**ORF Size:** 1092 bp

**OTI Disclaimer:** Due to the inherent nature of this plasmid, standard methods to replicate additional amounts of DNA in E. coli are highly likely to result in mutations and/or rearrangements. Therefore, OriGene does not guarantee the capability to replicate this plasmid DNA. Additional amounts of DNA can be purchased from OriGene with batch-specific, full-sequence verification at a reduced cost. Please contact our customer care team at [custsupport@origene.com](mailto:custsupport@origene.com) or by calling 301.340.3188 option 3 for pricing and delivery.

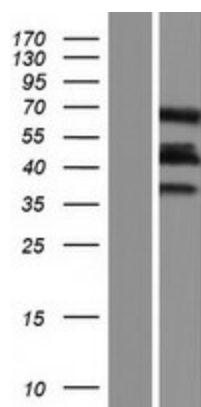
The molecular sequence of this clone aligns with the gene accession number as a point of reference only. However, individual transcript sequences of the same gene can differ through naturally occurring variations (e.g. polymorphisms), each with its own valid existence. This clone is substantially in agreement with the reference, but a complete review of all prevailing variants is recommended prior to use. [More info](#)

- OTI Annotation:** This clone was engineered to express the complete ORF with an expression tag. Expression varies depending on the nature of the gene.
- Components:** The ORF clone is ion-exchange column purified and shipped in a 2D barcoded Matrix tube containing 10ug of transfection-ready, dried plasmid DNA (reconstitute with 100 ul of water).
- Reconstitution Method:**
1. Centrifuge at 5,000xg for 5min.
  2. Carefully open the tube and add 100ul of sterile water to dissolve the DNA.
  3. Close the tube and incubate for 10 minutes at room temperature.
  4. Briefly vortex the tube and then do a quick spin (less than 5000xg) to concentrate the liquid at the bottom.
  5. Store the suspended plasmid at -20°C. The DNA is stable for at least one year from date of shipping when stored at -20°C.
- RefSeq:** [NM\\_001018116.2](#), [NP\\_001018126.1](#)
- RefSeq Size:** 2640 bp
- RefSeq ORF:** 1095 bp
- Locus ID:** 347273
- UniProt ID:** [Q5BKX8](#)
- Cytogenetics:** 9q31.1
- MW:** 41.7 kDa
- Gene Summary:** This gene encodes a protein containing two coiled-coil regions. The encoded protein promotes Rho/ROCK (Rho-kinase) signaling in cardiac muscles cells, and may facilitate myofibrillar organization. [provided by RefSeq, Jun 2013]

**Product images:**



Circular map for RC223714



Western blot validation of overexpression lysate (Cat# [LY422661]) using anti-DDK antibody (Cat# [TA50011-100]). Left: Cell lysates from untransfected HEK293T cells; Right: Cell lysates from HEK293T cells transfected with RC223714 using transfection reagent MegaTran 2.0 (Cat# [TT210002]).