

Product datasheet for **RC223707**

PORCN (NM_203474) Human Tagged ORF Clone

Product data:

Product Type:	Expression Plasmids
Product Name:	PORCN (NM_203474) Human Tagged ORF Clone
Tag:	Myc-DDK
Symbol:	PORCN
Synonyms:	DHOF; FODH; MG61; PORC; PPN
Mammalian Cell Selection:	Neomycin
Vector:	pCMV6-Entry (PS100001)
E. coli Selection:	Kanamycin (25 ug/mL)



[View online »](#)

ORF Nucleotide Sequence:

>RC223707 representing NM_203474
 Red=Cloning site Blue=ORF Green=Tags(s)

TTTTGTAATACGACTCACTATAGGGCGGCCGGAATTCGTCGACTGGATCCGGTACCGAGGAGATCTGCC
 GCC**CGGATCGCC**

ATGGCCACCTTTAGCCGCCAGGAATTTTCCAGCAGCTACTGCAAGGCTGTCTCCTGCCTACTGCCAGC
 AGGGCCTTGACCAGATCTGGCTGCTCCTTGCCATCTGCCTCGCCTGCCGCTCCTCTGGAGGCTCGGGT
 GCCATCTACCTGAAGCATGCAAGCACCCTGGCAGGCGGGTTCTCAGCCTCTACCACTTCTCCAGCTG
 CACATGGTTTGGGTCGTGCTGCTCAGCCTCCTGTGCTACCTCGTGTCTCCTCTGCCGACATTCCTCCC
 ATCGAGGCGTCTTCTATCCGTACCATCTCATCTACCTACTCATGGGTGAGATGCACATGGTAGACAC
 CGTGACATGGCACAAGATGCGAGGGGCACAGATGATTGTGGCCATGAAGGCAGTGTCTCTGGGCTTCGAC
 CTGGACCGGGGCGAGGTGGTACGGTGCCTCGCCAGTGGAGTTCATGGGCTACCTCTACTTCGTGGCA
 CCATCGTCTTCGGGCCCTGGATATCCTTCCACAGCTACCTACAAGCTGTCCAAGGCCGCCACTGAGCTG
 CCGGTGGCTGCAGAAGGTGGCCCGAGCCTGGCACTGGCCCTGCTGTGCCTTGTGTCTGCCACTTGGCTG
 GGCCCTACCTCTCCCGTACTTCATCCCCCTCAACGGTGACCGCTCCTTCGCAAGGGCACCATGGTAA
 GGTGGCTGCGAGCCTACGAGAGTGTCTCTCCTCCACTTCAGCAACTATTTTGTGGGCTTCTTTCCGA
 GGCCACGGCCACGTTGGCGGGGGCTGGCTTTACCGAGGAGAAGGATCACCTGGAATGGGACCTGACGGTG
 TCCAAGCCACTGAATGTGGAGCTGCCTCGGTCAATGGTGGAAAGTTGTCACAAGCTGGAACCTGCCATGT
 CTTATTGGCTAAATAACTATGTTTTCAAGAATGCTCTCCGCTGGGGACCTTCTCGGCTGTGCTGGTAC
 CTATGCAGCCAGCGCCCTCCTACATGGCTTCAGTTCCACCTGGCTGGGCTCCTGCTGTCCCTGGCTTTT
 ATCACTTACGTGGAGCATGTCTCCGGAAGCGCCTGGCTCGGATCCTCAGTGCCTGTGTCTTGTCAAAGC
 GGTGCCCGCCAGACTGTTCCGACCAGCATCGCTTGGCCCTGGGGTGGGAGCCTTAAACTGTCTTTTGG
 AGCTCTGGCCATCTTCCACCTGGCCTACCTGGGCTCCCTGTTTGTGATGTCGATGTGGATGACACCACAGAG
 GAGCAGGGCTACGGCATGGCATACACTGTCCACAAGTGGTCAGAGCTCAGCTGGGCCAGTCACTGGGTCA
 CTTTTGGATGCTGGATCTTCTACCGTCTCATAGGC

ACGCGTACGCGGCCGCTCGAGCAGAACTCATCTCAGAAGAGGATCTGGCAGCAAATGATATCCTGGATT
 ACAAGGATGACGACGATAAGGTTTAA

Protein Sequence:

>RC223707 representing NM_203474
 Red=Cloning site Green=Tags(s)

MATFSRQEFFQQLLQGCLLPTAQQGLDQIWLIIAICLACRLLWRLGLPSYLKHASTVAGGFFSLYHFFQL
 HMVWVLLSLLCYLVFLCRHSSHRGVFLSVTILIIYLLMGEMHMVDTVTWHKMRGAQMIVAMKAVSLGFD
 LDRGEVGTVPSPVEFMGYLYFVGTIVFGPWISFHSYLQAVQGRPLSCRWLQKVARSLALALLCLVLSTCV
 GPYLPYFIPLNGDRLLRKGTMVRWLRAYESAVSFHFSNYFVGFLSEATATLAGAGFTEEKDHLEWDLTV
 SKPLNVELPRSMVEVTSWNLPMYSYWLNNYVFNALRLGTFSAVLVITYAASALLHGF SFHLAAVLLSLAF
 ITYVEHVLRKRLARILSACVLSKRCPPDCSHQHRLLGLGVRALNLLFGALAI FHLAYLGSFLDVEDDVTTE
 EQGYGMAYTVHKWSELSWASHWVTFGCWIFYRLIG

TRTRPLEQKLI SEEDLAANDILDYKDDDDKV

Chromatograms:

https://cdn.origene.com/chromatograms/mk8061_b06.zip

Restriction Sites:

Sgfl-MluI

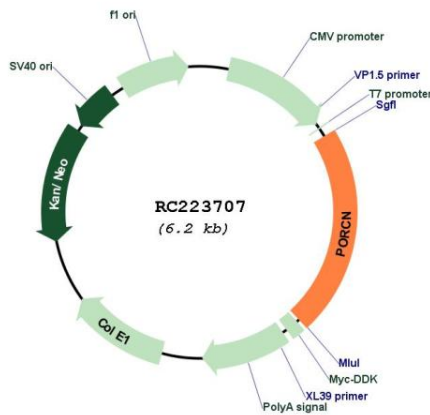
Protein Families: Transmembrane

Protein Pathways: Wnt signaling pathway

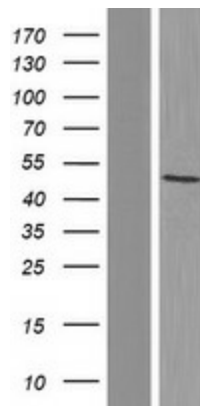
MW: 51.4 kDa

Gene Summary: This gene belongs to the evolutionarily conserved porcupine (Porc) gene family. Genes of the porcupine family encode endoplasmic reticulum proteins with multiple transmembrane domains. Porcupine proteins are involved in the processing of Wnt (wingless and int homologue) proteins. Disruption of this gene is associated with focal dermal hypoplasia, and the encoded protein has been implicated in cancer. Multiple alternatively spliced transcript variants encoding distinct isoforms have been observed. [provided by RefSeq, Aug 2013]

Product images:



Circular map for RC223707



Western blot validation of overexpression lysate (Cat# [LY404285]) using anti-DDK antibody (Cat# [TA50011-100]). Left: Cell lysates from untransfected HEK293T cells; Right: Cell lysates from HEK293T cells transfected with RC223707 using transfection reagent MegaTran 2.0 (Cat# [TT210002]).