

Product datasheet for **RC223706**

EDG7 (LPAR3) (NM_012152) Human Tagged ORF Clone

Product data:

Product Type:	Expression Plasmids
Product Name:	EDG7 (LPAR3) (NM_012152) Human Tagged ORF Clone
Tag:	Myc-DDK
Symbol:	EDG7
Synonyms:	Edg-7; EDG7; GPCR; HOFNH30; LP-A3; LPA3; RP4-678I3
Mammalian Cell Selection:	Neomycin
Vector:	pCMV6-Entry (PS100001)
E. coli Selection:	Kanamycin (25 ug/mL)
ORF Nucleotide Sequence:	>RC223706 representing NM_012152 Red=Cloning site Blue=ORF Green=Tags(s)

TTTTGTAATACGACTCACTATAGGGCGCCGGGAATTCGTCGACTGGATCCGGTACCGAGGAGATCTGCC
GCC**CGATCGCC**

ATGAATGAGTGTCACTATGACAAGCACATGGACTTTTTTATAATAGGAGCAACTGATACTGTGCGATG
ACTGGACAGGAACAAAGCTTGTGATTGTTTTGTGTGGGACGTTTTTCTGCCTGTTTATTTTTTTTTTC
TAATTCTCTGGTCATCGCGGCAGTGATCAAAAACAGAAAATTCATTTCCCTTCTACTACCTGTTGGCT
AATTTAGCTGCTGCCGATTTCTCGCTGGAATTGCCTATGTATTCCTGATGTTAAACACAGGCCAGTTT
CAAAAACTTTGACTGTCAACCGCTGGTTTCTCCGTCAGGGGCTTCTGGACAGTAGCTTGACTGCTTCCCT
CACCAACTTGCTGTTATCGCCGTGGAGAGGCACATGTCAATCATGAGGATGCGGGTCCATAGCAACCTG
ACCAAAAAGAGGGTGACACTGCTCATTTTGCTTGTCTGGGCCATCGCCATTTTTATGGGGCGGTCCCA
CACTGGGCTGGAATTGCCTCTGCAACATCTCGCTGCTCTTCCCTGGCCCCATTTACAGCAGGAGTTA
CCTTGTTTTCTGGACAGTGTCCAACCTCATGGCCTTCCATCATGGTTGTGGTGTACCTGCGGATCTAC
GTGTACGTCAAGAGGAAAACCAACGTCTTGTCTCCGCATACAAGTGGTCCATCAGCCGCGGAGGACAC
CCATGAAGCTAATGAAGACGGTGTGACTGTCTTAGGGCGTGTGGTATGCTGGACCCCGGCCCTGGT
GGTCTGCTCCTCGACGGCCTGAACTGCAGGCAGTGTGGCGTGCAGCATGTGAAAAGGTGGTTCTGCTG
CTGGCGCTGCTCAACTCCGTCGTGAACCCCATCTACTCCTACAAGGACGAGGACATGTATGGCACCA
TGAAGAAGATGATCTGCTTCTCTCAGGAGAACCCAGAGAGGCGTCCCTCTCGCATCCCTCCACAGT
CCTCAGCAGGAGTGACACAGGCAGCCAGTACATAGAGGATAGTATTAGCCAAGGTGCAGTCTGCAATAAA
AGCACTTCC

ACGCGTACGCGGCCGCTCGAGCAGAACTCATCTCAGAAGAGGATCTGGCAGCAATGATATCCTGGATT
ACAAGGATGACGACGATAAGGTTAA



[View online »](#)

Protein Sequence: >RC223706 representing NM_012152
Red=Cloning site Green=Tags(s)

MNECHYDKHMDFFYNRSNTDTVDDWTGTLVIVLCVGTFFCLFIFFSNSLVIAAVIKNRKFHFPFYLLA
 NLAAADFFAGIAYVFLMFNTGPVSKTLTVNRWFLRQGLDSSLTASLTNLLVIAVERHMSIMRMRVHNSL
 TKKRVTLLILLVWAIAIFMGAVPTLGNCLCNISACSSLAPIYSRSLVFWTVSNLMAFLIMVVVYLRIY
 VYVKRKTNVLSPHSTSGSISRRTMPKLMKTVMTVLGAFVVCWTPGLVLLLDGLNCRQCQGVQHVKRWFLL
 LALLNSVNPPIIYSYKDEDMYGMTMKMICCFSQENPERRPSRIPSTVLSRSDTGSQYIEDSISQGAVCNK
 STS

TRTRPLEQKLISEEDLAANDILDYKDDDDKV

Chromatograms: https://cdn.origene.com/chromatograms/mk6207_h05.zip

Restriction Sites: SgfI-MluI

Cloning Scheme:



* The last codon before the Stop codon of the ORF

ACCN: NM_012152

ORF Size: 1059 bp

OTI Disclaimer: The molecular sequence of this clone aligns with the gene accession number as a point of reference only. However, individual transcript sequences of the same gene can differ through naturally occurring variations (e.g. polymorphisms), each with its own valid existence. This clone is substantially in agreement with the reference, but a complete review of all prevailing variants is recommended prior to use. [More info](#)

OTI Annotation: This clone was engineered to express the complete ORF with an expression tag. Expression varies depending on the nature of the gene.

Components: The ORF clone is ion-exchange column purified and shipped in a 2D barcoded Matrix tube containing 10ug of transfection-ready, dried plasmid DNA (reconstitute with 100 ul of water).

Reconstitution Method:

1. Centrifuge at 5,000xg for 5min.
2. Carefully open the tube and add 100ul of sterile water to dissolve the DNA.
3. Close the tube and incubate for 10 minutes at room temperature.
4. Briefly vortex the tube and then do a quick spin (less than 5000xg) to concentrate the liquid at the bottom.
5. Store the suspended plasmid at -20°C. The DNA is stable for at least one year from date of shipping when stored at -20°C.

RefSeq: [NM_012152.3](#)

RefSeq Size: 1148 bp

RefSeq ORF: 1062 bp

Locus ID: 23566

UniProt ID: [Q9UBY5](#)

Cytogenetics: 1p22.3

Domains: 7tm_1

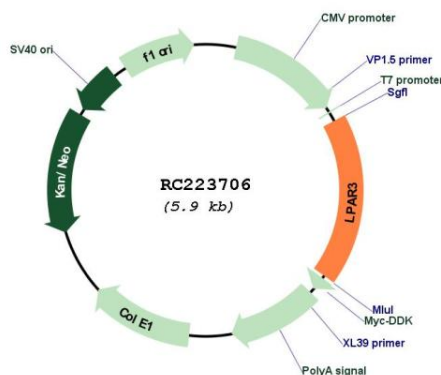
Protein Families: Druggable Genome, GPCR, Transmembrane

Protein Pathways: Neuroactive ligand-receptor interaction

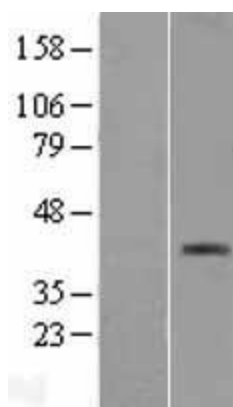
MW: 39.9 kDa

Gene Summary: This gene encodes a member of the G protein-coupled receptor family, as well as the EDG family of proteins. This protein functions as a cellular receptor for lysophosphatidic acid and mediates lysophosphatidic acid-evoked calcium mobilization. This receptor couples predominantly to G(q/11) alpha proteins. [provided by RefSeq, Jul 2008]

Product images:



Circular map for RC223706



Western blot validation of overexpression lysate (Cat# [LY415938]) using anti-DDK antibody (Cat# [TA50011-100]). Left: Cell lysates from untransfected HEK293T cells; Right: Cell lysates from HEK293T cells transfected with RC223706 using transfection reagent MegaTran 2.0 (Cat# [TT210002]).