

Product datasheet for **RC223701**

PSORS1C2 (NM_014069) Human Tagged ORF Clone

Product data:

Product Type: Expression Plasmids
Product Name: PSORS1C2 (NM_014069) Human Tagged ORF Clone
Tag: Myc-DDK
Symbol: PSORS1C2
Synonyms: C6orf17; SPR1
Mammalian Cell Selection: Neomycin
Vector: pCMV6-Entry (PS100001)
E. coli Selection: Kanamycin (25 ug/mL)
ORF Nucleotide Sequence: >RC223701 representing NM_014069
Red=Cloning site Blue=ORF Green=Tags(s)

TTTTGTAATACGACTCACTATAGGGCGCCGGGAATTCGTCGACTGGATCCGGTACCGAGGAGATCTGCC
GCC**CGATCGCC**

ATGATCTCAACTGGAAGCTCCTGGGATCCTGGTCCTTTGCCTGCACACCAGAGGCATCTCAGGCAGCG
AGGGCCACCCCTCTACCCACCCGAGAGGACCGAGAGGAGGCAGGCTCCCCAACATTGCCTCAGGGCCC
CCCAGTCCCGGTGACCCTTGGCCAGGGGACCCCTCTCTTTGAAGATCTCCGCCTACCCGCCCCAGT
CGTCCCTGGAGAGACCTGCCTGAACTGGAGTCTGGCCCCCTGAACCGCCTAGAACGGATCTCCTCAAC
CTCCCCGGCTGACGACCCTTGGCCGGCAGGACCCAGCCCCAGAAAACCCCTGGCCTCCTGCCCTGA
GGTGGACAACCGACCTCAGGAGGAGCCAGACCTAGACCCACCCCGGAAGGTACAGA

ACGCGTACGCGGCCGCTCGAGCAGAACTCATCTCAGAAGAGGATCTGGCAGCAAATGATATCCTGGATT
ACAAGGATGACGACGATAAGGTTTAA

Protein Sequence: >RC223701 representing NM_014069
Red=Cloning site Green=Tags(s)
MILNWKLLGILVLCLHTRGISGSEGHPSHPPAEDREEAGSPTLPQGPVPGDPWPAGPLFEDPPPTRPS
RPWRDLPETGVWPPEPPRTDPPQPPRPDDPWPAGPQPENPWPAPVNDNRPQEEPDLDPPEEYR

TRTRPLEQKLISEEDLAANDILDYKDDDDKV

Chromatograms: https://cdn.origene.com/chromatograms/mk8008_h02.zip

Restriction Sites: SgfI-MluI



[View online »](#)

Cloning Scheme:


ACCN: NM_014069

ORF Size: 408 bp

OTI Disclaimer: The molecular sequence of this clone aligns with the gene accession number as a point of reference only. However, individual transcript sequences of the same gene can differ through naturally occurring variations (e.g. polymorphisms), each with its own valid existence. This clone is substantially in agreement with the reference, but a complete review of all prevailing variants is recommended prior to use. [More info](#)

OTI Annotation: This clone was engineered to express the complete ORF with an expression tag. Expression varies depending on the nature of the gene.

Components: The ORF clone is ion-exchange column purified and shipped in a 2D barcoded Matrix tube containing 10ug of transfection-ready, dried plasmid DNA (reconstitute with 100 ul of water).

- Reconstitution Method:**
1. Centrifuge at 5,000xg for 5min.
 2. Carefully open the tube and add 100ul of sterile water to dissolve the DNA.
 3. Close the tube and incubate for 10 minutes at room temperature.
 4. Briefly vortex the tube and then do a quick spin (less than 5000xg) to concentrate the liquid at the bottom.
 5. Store the suspended plasmid at -20°C. The DNA is stable for at least one year from date of shipping when stored at -20°C.

RefSeq: [NM_014069.1](#), [NP_054788.1](#)

RefSeq Size: 1143 bp

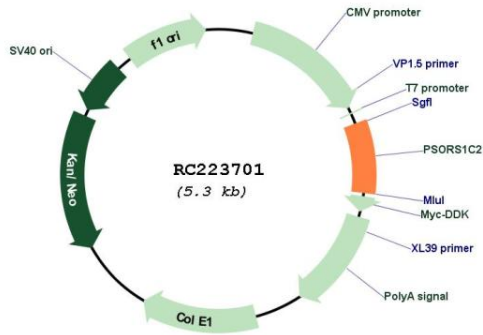
RefSeq ORF: 411 bp

Locus ID: 170680

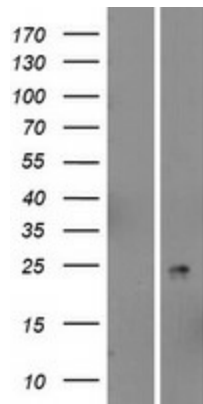
UniProt ID: [Q9UIG4](#)

Cytogenetics: 6p21.33
 Protein Families: Secreted Protein
 MW: 14.9 kDa

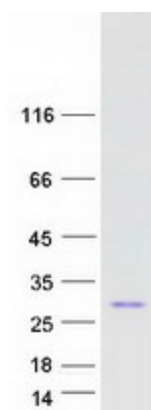
Product images:



Circular map for RC223701



Western blot validation of overexpression lysate (Cat# [LY415494]) using anti-DDK antibody (Cat# [TA50011-100]). Left: Cell lysates from untransfected HEK293T cells; Right: Cell lysates from HEK293T cells transfected with RC223701 using transfection reagent MegaTran 2.0 (Cat# [TT210002]).



Coomassie blue staining of purified PSORS1C2 protein (Cat# [TP323701]). The protein was produced from HEK293T cells transfected with PSORS1C2 cDNA clone (Cat# RC223701) using MegaTran 2.0 (Cat# [TT210002]).