

## Product datasheet for **RC223698**

### **PARD3 (NM\_019619) Human Tagged ORF Clone**

#### Product data:

Product Type:	Expression Plasmids
Product Name:	PARD3 (NM_019619) Human Tagged ORF Clone
Tag:	Myc-DDK
Symbol:	PARD3
Synonyms:	ASIP; Baz; PAR3; PAR3alpha; PARD-3; PARD3A; PPP1R118; SE2-5L16; SE2-5L1T1; SE2-5T2
Mammalian Cell Selection:	Neomycin
Vector:	pCMV6-Entry (PS100001)
E. coli Selection:	Kanamycin (25 ug/mL)
ORF Nucleotide Sequence:	>RC223698 representing NM_019619 Red=Cloning site Blue=ORF Green=Tags(s)

TTTTGTAATACGACTCACTATAGGGCGGCCGGAATTCGTCGACTGGATCCGGTACCGAGGAGATCTGCC  
GCC**CGATCGCC**

ATGAAAGTGACCGTGTGCTTCGGACGGACCCGGGTGGTCGTGCCGTGCGGGGACGGCCACATGAAAGTTT  
TCAGCCTCATCCAGCAGGCGGTGACCCGCTACCGGAAGGCCATCGCCAAGGATCCAACTACTGGATACA  
GGTGCATCGTTGGAACATGGAGATGGAGGAATACTAGACCTTGATGACATTCTTTGTGATGTAGCAGAC  
GATAAAGACAGACTGGTAGCAGTGTGGATGAGCAGGATCCACATCACGGAGGTGATGCCACCAGTGCCA  
GTTCCACGGGTACCCAGAGCCCAGAGATATTTGGTAGTGAGCTTGGCACCAACAATGTCTCAGCCTTTCA  
GCCTTACCAAGCAACAAGTAAAATTGAGGTCACACCTTCAGTCCTTCGAGCAAATATGCCTTTCATGTT  
CGACGCAGTAGTGACCCAGCTCTAATTGGCCTCTCCACTTCTGTGAGTATAGTAATTTTTCTCTGAAAG  
AGCCTTCAAGGAAAAATCCCACACGCTGGTCAACAACAGCTGGCTTCTCAAGCAGAACACTGCTGGGAG  
TCCTAAAACCTGCGACAGGAAGAAAGATGAAAACACAGAACCTCCCGCGGATACTAGTAAGTGGTCT  
AACCAATTCAGAGAGACAATGCTCGCTCGTCTGAGTGCCAGTCACCAATGGTGGGCAAGTGGCTGG  
AGAAACAAGAACAGGATGAGGATGGGACAGAAGAGGATAACAGTCGTGTTGAACCTGTTGGACATGCTGA  
CACGGGTTTGGAGCATATACCAACTTTTCTCTGGATGATATGGTAAAGCTCGTAGAAGTCCCAACGAT  
GGAGGGCCTCTGGGAATCCATGTAGTGCCTTTTCAGTGCTCGAGGCGGCAGAACCTGGGGTTATTAGTAA  
AACGATTGGAGAAAGGTGGTAAAGCTGAACATGAAAATCTTTTTCTGAGAAATGATTGCATTGTCAGGAT  
TAATGATGGCGACCTTCGAAATAGAAGATTTGAACAAGCACAACATATGTTTCGCAAGCCATGCGTACA  
CCCATCATTTGGTTCCATGTGGTTCCTGCAGCAAATAAAGAGCAGTATGAACAACATATCCCAAAGTGA  
AGAACAATTACTATTCAAGCCGTTTTAGCCCTGACAGCCAGTATATTGACAACAGGAGTGTGAACAGTGC  
AGGGCTTCACACGGTGCAGAGAGCACCCCGACTGAACCACCCGCTGAGCAGATAGACTCTCACTCAAGA  
CTACCTCATAGCGCACACCCCTCGGAAAACCACCATCCGCTCCAGCCTCGGCACCTCAGAATGTATTTA  
GTACGACTGTAAGCAGTGGTTATAACACCAAAAAAATAGGCAAGAGGCTTAATATCCAGCTTAAGAAAGG  
TACAGAAGGTTTGGGATTCAGCATCACTCCAGAGATGTAACAATAGGTGCTCAGTCCAATCTATGTG



AAAAACATTCTCCCCGGGGGGCGGCCATTTCAGGATGGCCGACTTAAGGCAGGAGACAGACTTATAGAGG  
TAAATGGAGTAGATTTAGTGGGCAAATCCCAAGAGGAAGTTGTTTCGCTGTTGAGAAGCACCAAGATGGA  
AGGAACTGTGAGCCTTCTGGTCTTTCGCCAGGAAGACGCCTTCCACCCAAGGAACTGAATGCAGAGCCA  
AGCCAGATGCAGATTCAAAAAGAAACGAAAGCAGAAGATGAGGATATTGTTCTTACACCTGATGGCACCA  
GGGAATTTCTGACATTTGAAGTCCCCTTAATGATTCAGGATCTGCAGGCCTTGGTGTCAAGTGTCAAAGG  
TAACCGGTCAAAGAGAACCACGCAGATTTGGGAATCTTGTCAAGTCCATTATTAATGGAGGAGCAGCA  
TCTAAAGATGGAAGGCTTCGGGTGAATGATCAACTGATAGCAGTAAATGGAGAATCCCTGTTGGGCAAGA  
CAAACCAAGATGCCATGGAAACCCTAAGAAGGTCTATGTCTACTGAAGGCAATAAACGAGGAATGATCCA  
GCTTATTGTTGCAAGGAGAATAAGCAAGTGCAATGAGCTGAAGTCACTGGGAGCCCCCTGGACCTGAG  
CTGCCATTGAAACAGCGTTGGATGATAGAGAACGAAGAATTTCCATTCCCTCTACAGTGGGATTGAGG  
GGCTTGATGAATCCCCAGCAGAAATGCTGCCCTCAGTAGGATAATGGGTGAGTCAGGTAATACCAGCT  
GTCCCCTACAGTGAATATGCCCAAGATGACACTGTCATTATAGAAGATGACAGGTTGCCAGTGCTTCT  
CCACATCTCTGACCAGTCTCTCCAGCTCCCATGATGATGTGGGTTTGTGACGGCAGATGCTGGTA  
CTTGGGCCAAGGCTGCAATCAGTGATTCAGCCGACTGCTCTTGTAGTCCAGATGTTGATCCAGTTCTTGC  
TTTTCAACGAGAAGGATTTGGACGTGAGATATGTCAGAAAAACGCACAAAGCAATTTTCAGATGCCAGT  
CAATTGGATTTTCGTTAAACACGAAAATCAAAAAGCATGGATTTAGGTATAGCTGACGAGACTAACTCA  
ATACAGTGGATGACCAGAAAGCAGGTTCTCCAGCAGAGATGTGGGTCTTCCCTGGGTCTGAAGAAGTC  
AAGCTCGTTGGAGAGTCTGCAGACCCGAGTTGCCGAGGTGACTTTGAATGGGGATATTCCTTTCCATCGT  
CCACGGCCCGCGGATAATCAGAGGCAGGGGATGCAATGAGAGCTTCAGAGCTGCCATCGACAAATCTTATG  
ATAAACCCGCGGTAGATGATGATGATGAAGGCATGGAGACCTTGGAGAAGACACAGAAGAAAGTTCAAG  
ATCAGGGAGAGAGTCTGTATCCACAGCCAGTATCAGCCTTCCCCTCTCTGGAGAGACAAATGAATGGA  
AACCAAGAGAAGGATAAAATGAAAGCCAAGAAAGGAAATGCTGAAGGGCTTGGGAGACATGTTCAAGTTTGG  
CAAACATCGAAAAGATGACAAGATTGAGAAAACGGGTAATAAAAAATACAGGAATCCTTTACATCAGAA  
GAGGAGAGGATACGAATGAAGCAGGAGCAGGAGAGGATTCAAGCCAAAACTCGAGAATTTAGGGAACGAC  
AAGCTCGAGAGCGTGACTATGCTGAAATCAAGATTTTTCATCGGACATTTGGCTGTGATGATGAGTTAAT  
GTATGGGGGAGTTTCTTCTTATGAAGGTTCCATGGCTCTCAACGCTAGACCTCAGAGCCCACGAGAAGGG  
CATATGATGGATGCTTTGTATGCCCAAGTCAAGAAGCCGCGGAATTCAAAACCTCACCTGTAGACAGTA  
ACAGATCAACTCCTAGCAATCATGATCGGATACAGCGTCTGAGGCAAGAATTTAGCAAGCAAAGCAAGA  
TGAAGATGTAGAAGATCGTCGGCGGACCTATAGTTTTGAGCAACCCTGGCCGAACGCACGGCCGGCGACG  
CAGAGCGGGCAGACTCGGTGTCCGTGGAGGTGCAGATGCAGCGCAGCGCAGGAGGAGCGCGAGAGCT  
CCCAGCAGGCCACGCGCCAGTACAGCTCTCTGCCTCGGCAAGCAGGAAAATGCCAGCTCGGTCTCCCA  
GGACTCTTGGGAGCAGAACTACTCCCCTGGGGAAGGCTTCCAGAGTGCCAAAGAGAACCACAGTACTCC  
AGCTACCAAGGCTCCAGGAACGGCTACCTGGGAGGACATGGCTTCAACGCCAGGGTCATGCTGAAAACCTC  
AGGAGCTCCTTCGCCAGGAACAGAGGGGGAAGGAGCAGCAGATGAAGAAGCAGCCTCCTTCGAGGGGCC  
CAGCAACTATGACTCGTATAAGAAAGTCCAGGACCCAGTTACGCCCTCCCAAGGGGCCCTTCGGCAA  
GATGTGCCCCCTCCCTTCTCAGGTTGCGAGGCTGAACAGACTTCAGACTCTGAGAAAGGGAGGCCCT  
TCTATTCC

ACGCGTACGCGGCGCTCGAGCAGAACTCATCTCAGAAGAGGATCTGGCAGCAAATGATATCCTGGATT  
ACAAGGATGACGACGATAAGGTTTAA

**Protein Sequence:** >RC223698 representing NM\_019619  
Red=Cloning site Green=Tags(s)

```

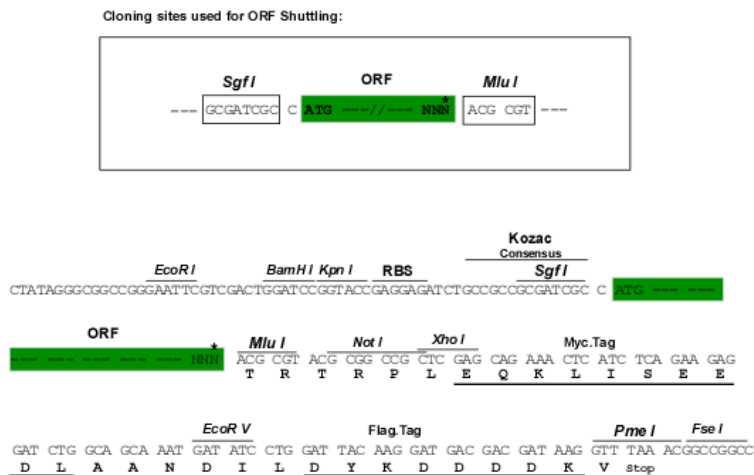
MKVTVCFGRTRVVVPCGDGHMKVFSLIQQAVTRYKAIKDPNYWIQVHRLHEHGGGILDLDLDDILCDVAD
DKDRLVAVFDEQDPHHGGDGTSAASSTGTQSP E I F G S E L G T N N V S A F Q P Y Q A T S E I E V T P S V L R A N M P L H V
R R S S D P A L I G L S T S V S D S N F S S E E P S R K N P T R W S T T A G F L K Q N T A G S P K T C D R K K D E N Y R S L P R D T S N W S
N Q F Q R D N A R S S L S A S H P M V G K W L E K Q E Q D E D G T E E D N S R V E P V G H A D T G L E H I P N F S L D D M V K L V E V P N D
G G P L G I H V V P F S A R G G R T L G L L V K R L E K G G K A E H E N L F R E N D C I V R I N D G D L R N R R F E Q A Q H M F R Q A M R T
P I I W F H V V P A A N K E Q Y E Q L S Q S E K N N Y S S R F S P D S Q Y I D N R S V N S A G L H T V Q R A P R L N H P P E Q I D S H S R
L P H S A H P S G K P P S A P A S A P Q N V F S T T V S S G Y N T K K I G K R L N I Q L K G T E G L G F S I T S R D V T I G G S A P I Y V
K N I L P R G A A I Q D G R L K A G D R L I E V N G V D L V G K S Q E E V S L L R S T K M E G T V S L L V F R Q E D A F H P R E L N A E P
S Q M Q I P K E T K A E D E D I V L T P D G T R E F L T F E V P L N D S G S A G L G V S V K G N R S K E N H A D L G I F V K S I I N G G A A
S K D G R L R V N D Q L I A V N G E S L L G K T N Q D A M E T L R R S M S T E G N K R G M I Q L I V A R R I S K C N E L K S P G S P P G P E
L P I E T A L D D R R R I S H S L Y S G I E G L D E S P S R N A A L S R I M G E S G K Y Q L S P T V N M P Q D D T V I I E D D R L P V L P
P H L S D Q S S S S H D D V G F V T A D A G T W A K A A I S D S A D C S L S P D V D P V L A F Q R E G F G R Q S M S E K R T K Q F S D A S
Q L D F V K T R K S K S M D L G I A D E T K L N T V D D Q K A G S P S R D V G P S L G L K K S S S L E S L Q T A V A E V T L N G D I P F H R
P R P R I I R G R C N E S F R A A I D K S Y D K P A V D D D E G M E T L E E D T E E S S R S G R E S V S T A S D Q P S H S L E R Q M N G
N Q E K G D K T D R K K D K T G K E K K K D R D K E K D K M K A K K G M L K G L G D M F R F G K H R K D D K I E K T G K I K I Q E S F T S E
E E R I R M K Q E Q E R I Q A K T R E F R E R Q A R E R D Y A E I Q D F H R T F G C D D E L M Y G G V S S Y E G S M A L N A R P Q S P R E G
H M M D A L Y A Q V K K P R N S K P S P V D S N R S T P S N H D R I Q R L R Q E F Q Q A K Q D E D V E D R R R T Y S F E Q P W P N A R P A T
Q S G R H S V S V E V Q M Q R Q R Q E E R E S S Q A Q R Q Y S S L P R Q S R K N A S S V S Q D S W E Q N Y S P G E G F Q S A K E N P R Y S
S Y Q G S R N G Y L G G H G F N A R V M L E T Q E L L R Q E Q R R K E Q M K K Q P P S E G P S N Y D S Y K K V Q D P S Y A P P K G P F R Q
D V P P S P S Q V A R L N R L Q T P E K G R P F Y S
    
```

TRTRPLEQKLISEEDLAANDILDYKDDDDKV

**Chromatograms:** [https://cdn.origene.com/chromatograms/mk8046\\_e10.zip](https://cdn.origene.com/chromatograms/mk8046_e10.zip)

**Restriction Sites:** SgfI-MluI

**Cloning Scheme:**



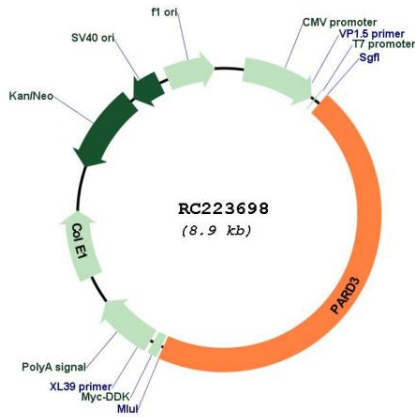
\* The last codon before the Stop codon of the ORF

**ACCN:** NM\_019619

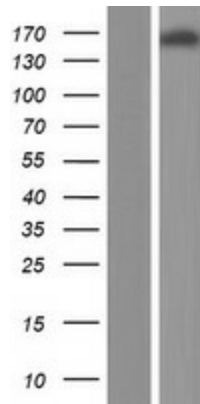
**ORF Size:** 4068 bp

<b>OTI Disclaimer:</b>	The molecular sequence of this clone aligns with the gene accession number as a point of reference only. However, individual transcript sequences of the same gene can differ through naturally occurring variations (e.g. polymorphisms), each with its own valid existence. This clone is substantially in agreement with the reference, but a complete review of all prevailing variants is recommended prior to use. <a href="#">More info</a>
<b>OTI Annotation:</b>	This clone was engineered to express the complete ORF with an expression tag. Expression varies depending on the nature of the gene.
<b>Components:</b>	The ORF clone is ion-exchange column purified and shipped in a 2D barcoded Matrix tube containing 10ug of transfection-ready, dried plasmid DNA (reconstitute with 100 ul of water).
<b>Reconstitution Method:</b>	<ol style="list-style-type: none"><li>1. Centrifuge at 5,000xg for 5min.</li><li>2. Carefully open the tube and add 100ul of sterile water to dissolve the DNA.</li><li>3. Close the tube and incubate for 10 minutes at room temperature.</li><li>4. Briefly vortex the tube and then do a quick spin (less than 5000xg) to concentrate the liquid at the bottom.</li><li>5. Store the suspended plasmid at -20°C. The DNA is stable for at least one year from date of shipping when stored at -20°C.</li></ol>
<b>RefSeq:</b>	<a href="#">NM_019619.2</a> , <a href="#">NP_062565.2</a>
<b>RefSeq Size:</b>	4071 bp
<b>RefSeq ORF:</b>	4071 bp
<b>Locus ID:</b>	56288
<b>UniProt ID:</b>	<a href="#">Q8TEW0</a>
<b>Cytogenetics:</b>	10p11.22-p11.21
<b>Domains:</b>	PDZ
<b>Protein Pathways:</b>	Adherens junction, Chemokine signaling pathway, Endocytosis, Neuroactive ligand-receptor interaction, Tight junction
<b>MW:</b>	151.2 kDa
<b>Gene Summary:</b>	This gene encodes a member of the PARD protein family. PARD family members interact with other PARD family members and other proteins; they affect asymmetrical cell division and direct polarized cell growth. Multiple alternatively spliced transcript variants have been described for this gene. [provided by RefSeq, Oct 2011]

Product images:



Circular map for RC223698



Western blot validation of overexpression lysate (Cat# [LY412706]) using anti-DDK antibody (Cat# [TA50011-100]). Left: Cell lysates from untransfected HEK293T cells; Right: Cell lysates from HEK293T cells transfected with RC223698 using transfection reagent MegaTran 2.0 (Cat# [TT210002]).