

Product datasheet for RC223693

HEPACAM (NM_152722) Human Tagged ORF Clone

Product data:

Product Type:	Expression Plasmids
Product Name:	HEPACAM (NM_152722) Human Tagged ORF Clone
Tag:	Myc-DDK
Symbol:	HEPACAM
Synonyms:	GlialCAM; HEPN1; MLC2A; MLC2B
Mammalian Cell Selection:	Neomycin
Vector:	pCMV6-Entry (PS100001)
E. coli Selection:	Kanamycin (25 ug/mL)
ORF Nucleotide Sequence:	>RC223693 representing NM_152722 Red=Cloning site Blue=ORF Green=Tags(s)

TTTTGTAATACGACTCACTATAGGGCGGCCGGAATTCGTCGACTGGATCCGGTACCGAGGAGATCTGCC
GCC**CGATCGCC**

ATGAAGAGAGAAAGGGGAGCCCTGTCCAGAGCCTCCAGGGCCCTGCGCCTTGCTCCTTTGTCTACCTTC
TTCTGATCCAGACAGACCCCTGGAGGGGGTGAACATCACCAGCCCGTGCGCCTGATCCATGGCACCGT
GGGAAGTCGGCTCTGCTTTCTGTGCAGTACAGCAGTACCAGCAGCGACAGGCCTGTAGTGAAGTGGCAG
CTGAAGCGGGACAAGCCAGTGACCGTGGTGCAGTCCATTGGCACAGAGGTATCGGCACCCTGCGGCCCTG
ACTATCGAGACCGTATCCGACTTTTAAAATGGCTCCCTGCTTCTCAGCGACCTGCAGCTGGCCGATGA
GGGCACCTATGAGGTCGAGATCTCCATCACCAGCAGACCTTCACTGGGGAGAAGACCATCAACCTTACT
GTAGATGTGCCATTTTCGAGGCCACAGGTGTTGGTGGCTTCAACCACTGTGCTGGAGCTCAGCGAGGCC
TCACCTTGAAGTCTCACATGAGAATGGCACCAAGCCAGCTACACCTGGCTGAAGGATGGCAAGCCCT
CCTCAATGACTCGAGAATGCTCCTGTCCCCGACCAAAAGGTGCTCACCATCACCCGCGTCTCATGGAG
GATGACGACCTGTACAGCTGCGTGGTGGAGAACCCATCAGCCAGGGCCGAGCCTGCCTGTCAAGATCA
CCGATACAGAAGAAGCTCCCTTACATCATCTTGTCTACAGGAGGCATCTTCTCCTTGTGACCTTGGT
GACAGTCTGTGCTGCTGAAACCCTCCAAAAGGAAACAGAAGAAGCTAGAAAAGCAAACTCCCTGGAA
TACATGGATCAGAATGATGACCGCTGAAACCAGAAGCAGACACCTCCCTCGAAGTGGTGAAGCAGGAAC
GGAAGAACCCATGGCACTCTATATCCTGAAGGACAAGGACTCCCCGGAGACCGAGGAGAACCCGGCCCC
GGAGCCTCGAAGCGGACGGAGCCCGGCCCGCCGGCTACTCCGTGTCTCCCGCGGTGCCCGGCCGCTCG
CCGGGGCTGCCATCCGCTCTGCCCGCCGCTACCCGCGCTCCCCAGCGCCTCCCGAGCCACCGGCCGGA
CACACTCGTCGCCGCCAGGGCCCCGAGCTCGCCCGCCGCTCGCGCAGCGCCTCGCGCACACTGCGGAC
TGCGGGCGTGACATAATCCGCGAGCAAGACGAGGCCGGCCCGGTGGAGATCAGCGCC

ACGCGTACGCGGCCGCTCGAGCAGAACTCATCTCAGAAGAGGATCTGGCAGCAATGATATCCTGGATT
ACAAGGATGACGACGATAAGGTTTAA



[View online >](#)

Protein Sequence: >RC223693 representing NM_152722
Red=Cloning site Green=Tags(s)

MKREREGALSRSARLRLAPFVYLLLIQTDPLEGVNITSPVRLIHGTVGKSALLSVQYSSTSSDRPVVKWQ
 LKRDKPVTVVQSIGTEVIGTLRPDYRDRIRLFENGSLLSDLQLADEGTYEVEISITDDTFTGEKTINLT
 VDVPISRPOVLVASTTVLELSEAFTLNCSHENGTKPSYTWLKDGPPLNDSRMLLSPDQKVLITITRVLME
 DDDLYSVVENPISQGRSLPVKITVYRRSLYIILSTGGIFLLVTLVTVCACWKPKSRKQKLEKQNSLE
 YMDQNDDRLLKPEADTLPRSGEQERKNPMALYILKDKDSPETEENPAPEPRSAATEPAPPYYSVPAVPGRS
 PGLPIRSARRYPRSPARSPATGTRTHSSPPRAPSSPGRSRSASRTLRTAGVHIIREQDEAGPVEISA

TRTRPLEQKLISEEDLAANDILDYKDDDDKV

Chromatograms: https://cdn.origene.com/chromatograms/mk8012_e11.zip

Restriction Sites: SgfI-MluI

Cloning Scheme:



* The last codon before the Stop codon of the ORF

ACCN: NM_152722

ORF Size: 1248 bp

OTI Disclaimer: The molecular sequence of this clone aligns with the gene accession number as a point of reference only. However, individual transcript sequences of the same gene can differ through naturally occurring variations (e.g. polymorphisms), each with its own valid existence. This clone is substantially in agreement with the reference, but a complete review of all prevailing variants is recommended prior to use. [More info](#)

OTI Annotation: This clone was engineered to express the complete ORF with an expression tag. Expression varies depending on the nature of the gene.

Components: The ORF clone is ion-exchange column purified and shipped in a 2D barcoded Matrix tube containing 10ug of transfection-ready, dried plasmid DNA (reconstitute with 100 ul of water).

Reconstitution Method:

1. Centrifuge at 5,000xg for 5min.
2. Carefully open the tube and add 100ul of sterile water to dissolve the DNA.
3. Close the tube and incubate for 10 minutes at room temperature.
4. Briefly vortex the tube and then do a quick spin (less than 5000xg) to concentrate the liquid at the bottom.
5. Store the suspended plasmid at -20°C. The DNA is stable for at least one year from date of shipping when stored at -20°C.

RefSeq: [NM_152722.3](#), [NP_689935.1](#)

RefSeq Size: 3258 bp

RefSeq ORF: 1251 bp

Locus ID: 220296

UniProt ID: [Q14CZ8](#)

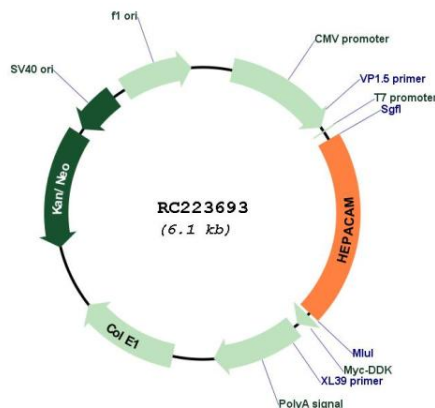
Cytogenetics: 11q24.2

Protein Families: Druggable Genome, Transmembrane

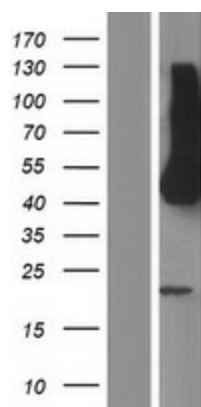
MW: 45.8 kDa

Gene Summary: The protein encoded by this gene is a single-pass type I membrane protein that localizes to the cytoplasmic side of the cell membrane. The encoded protein acts as a homodimer and is involved in cell motility and cell-matrix interactions. The expression of this gene is downregulated or undetectable in many cancer cell lines, so this may be a tumor suppressor gene. [provided by RefSeq, Jul 2011]

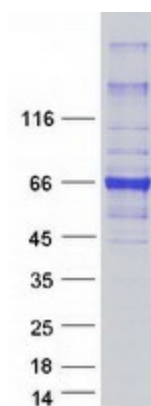
Product images:



Circular map for RC223693



Western blot validation of overexpression lysate (Cat# [LY407342]) using anti-DDK antibody (Cat# [TA50011-100]). Left: Cell lysates from untransfected HEK293T cells; Right: Cell lysates from HEK293T cells transfected with RC223693 using transfection reagent MegaTran 2.0 (Cat# [TT210002]).



Coomassie blue staining of purified HEPACAM protein (Cat# [TP323693]). The protein was produced from HEK293T cells transfected with HEPACAM cDNA clone (Cat# RC223693) using MegaTran 2.0 (Cat# [TT210002]).