

Product datasheet for **RC223692**

Dystrobrevin alpha (DTNA) (NM_001392) Human Tagged ORF Clone

Product data:

Product Type:	Expression Plasmids
Product Name:	Dystrobrevin alpha (DTNA) (NM_001392) Human Tagged ORF Clone
Tag:	Myc-DDK
Symbol:	Dystrobrevin alpha
Synonyms:	D18S892E; DRP3; DTN; DTN-A; LVNC1
Mammalian Cell Selection:	Neomycin
Vector:	pCMV6-Entry (PS100001)
E. coli Selection:	Kanamycin (25 ug/mL)
ORF Nucleotide Sequence:	>RC223692 representing NM_001392 Red=Cloning site Blue=ORF Green=Tags(s)

TTTTGTAATACGACTCACTATAGGGCGGCCGGAATTCGTCGACTGGATCCGGTACCGAGGAGATCTGCC
GCC**CGATCGCC**

ATGATTGAAGATAGTGGGAAAAGAGGAAATACCATGGCAGAAAGAAGACAGCTGTTTGCAGAGATGAGGG
CTCAAGATCTGGATCGCATCCGACTCTCCACCTACAGAACAGCATGCAAGCTTAGGTTTGTTCAGAAGAA
ATGCAATTTGCACCTGGTGGACATATGGAATGTCATAGAAGCATTGCGGGAAAATGCTCTGAACAACCTG
GACCCAAACACTGAACTCAACGTGTCCCGCTTAGAGGCTGTGCTCTCCTACTATTTTTACCAGCTCAACA
AACGGATGCCAACCACTACCAAATCCATGTGGAGCAGTCCATCAGCCTCCTCCTAACTCCTGCTTGC
AGCGTTTGATCCGGAAGGCCATGGTAAAATTCAGTATTTGCTGTCAAAATGGCTTAGCCACATTTGTG
GGAGGGAAGATCATGGACAAATTAAGATATATTTCTCAATGATTTCTGACTCCAGTGGGGTGATGGTTT
ATGGACGATATGACCAATTCCTTCGGAAGTTCTCAAACACCCACGGCAGTTTTTGAAGGTCCTTCATT
TGGTTACACAGAACAGTCAGCCAGATCCTGTTTCTCCCAACAGAAAAAGTCACGTTAAATGGTTTCTTG
GACACGCTTATGTCAGATCCTCCCCGAGTGTCTGGTCTGGTTGCCTTCTGCATCGACTAGCAAATG
TGGAAAATGTCTCCATCCGTTGAGTGTCTCTACTGCCACAGTGAGAGTATGATGGGATTTGCTACCG
ATGCCAACAGTGTACAATTACCAGCTCTGTGAGACTGCTTCTGGAGGGGACATGCCGGTGGTTCTCAT
AGCAACCAGCACCAAATGAAAGAGTACAGTCTGGAATCACCCTGCTAAGAAGCTGACTAATGCATTAA
GCAAGTCCCTGAGCTGTGCTTCCAGCCGTGAACCTTTGACCCCATGTTCCAGATCAGCCTGAGAAGCC
ACTCAACTTGGCTCACATCGTTGATACTTGGCCTCCCAGACCTGTAACCAGCATGAACGACACCCTGTT
TCCCCTCTGTTCCCTCCTCAGGAAGTCTTTTATTACCAGGAGCTCGGACGGTCTTTTGGTGGATGCG
TC

ACGCGTACGCGGCCGCTCGAGCAGAAACTCATCTCAGAAGAGGATCTGGCAGCAAATGATATCCTGGATT
ACAAGGATGACGACGATAAGGTTTAA



[View online »](#)

Protein Sequence: >RC223692 representing NM_001392
Red=Cloning site Green=Tags(s)

MIEDSGKRGNTMAERRQLFAEMRAQDLDRIRLSTYRTACKLRFVQKKNLHLVDIWNVIEALRENALNNL
 DPNTLNVSRLAVLSTIFYQLNKRMPPTHQIHVEQSISLLNFLLAADFPEGHGKISVFAVKMALATLC
 GGKIMDKLRYIFSMISDSSGVMVYGRYDQFLREVLKLP TAVFEGPSFGYTEQSARSCFSQQKVTLNGFL
 DTLMSDPPPQCLVWLPLLHRLANVENVHPVECSYCHSESMGMFRYRCQQCHNYQLCQDCFWRGHAGGSH
 SNQHQMKEYTSWKSPAKKLTNALSKSLSCASSREPLHPMFDPQPEKPLNLAHIVDTWPPRPVTSMNDFL
 SHSVPSSGSPFITRSSDGAFGGCV

TRTRPLEQKLISEEDLAANDILDYKDDDDKV

Chromatograms: https://cdn.origene.com/chromatograms/mk8055_e08.zip

Restriction Sites: SgfI-MluI

Cloning Scheme:



ACCN: NM_001392

ORF Size: 1122 bp

OTI Disclaimer: The molecular sequence of this clone aligns with the gene accession number as a point of reference only. However, individual transcript sequences of the same gene can differ through naturally occurring variations (e.g. polymorphisms), each with its own valid existence. This clone is substantially in agreement with the reference, but a complete review of all prevailing variants is recommended prior to use. [More info](#)

OTI Annotation: This clone was engineered to express the complete ORF with an expression tag. Expression varies depending on the nature of the gene.

Components: The ORF clone is ion-exchange column purified and shipped in a 2D barcoded Matrix tube containing 10ug of transfection-ready, dried plasmid DNA (reconstitute with 100 ul of water).

Reconstitution Method:

1. Centrifuge at 5,000xg for 5min.
2. Carefully open the tube and add 100ul of sterile water to dissolve the DNA.
3. Close the tube and incubate for 10 minutes at room temperature.
4. Briefly vortex the tube and then do a quick spin (less than 5000xg) to concentrate the liquid at the bottom.
5. Store the suspended plasmid at -20°C. The DNA is stable for at least one year from date of shipping when stored at -20°C.

RefSeq: [NM_001392.5](#)

RefSeq Size: 1718 bp

RefSeq ORF: 1125 bp

Locus ID: 1837

UniProt ID: [Q9Y4J8](#)

Cytogenetics: 18q12.1

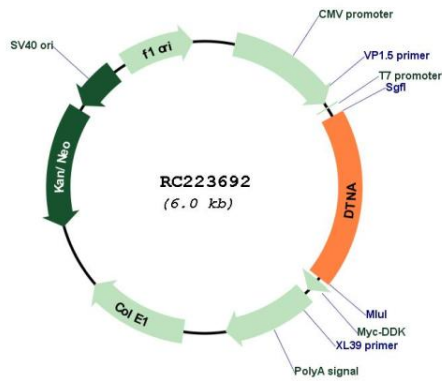
Domains: ZnF_ZZ

Protein Families: Druggable Genome

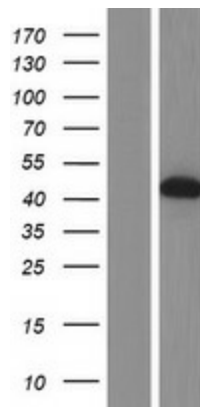
MW: 42.2 kDa

Gene Summary: The protein encoded by this gene belongs to the dystrobrevin subfamily of the dystrophin family. This protein is a component of the dystrophin-associated protein complex (DPC), which consists of dystrophin and several integral and peripheral membrane proteins, including dystroglycans, sarcoglycans, syntrophins and alpha- and beta-dystrobrevin. The DPC localizes to the sarcolemma and its disruption is associated with various forms of muscular dystrophy. Mutations in this gene are associated with left ventricular noncompaction with congenital heart defects. Multiple alternatively spliced transcript variants encoding different isoforms have been identified for this gene. [provided by RefSeq, Jul 2008]

Product images:



Circular map for RC223692



Western blot validation of overexpression lysate (Cat# [LY419965]) using anti-DDK antibody (Cat# [TA50011-100]). Left: Cell lysates from untransfected HEK293T cells; Right: Cell lysates from HEK293T cells transfected with RC223692 using transfection reagent MegaTran 2.0 (Cat# [TT210002]).