

Product datasheet for RC223680

KCC2 (SLC12A5) (NM_020708) Human Tagged ORF Clone

Product data:

Product Type:	Expression Plasmids
Product Name:	KCC2 (SLC12A5) (NM_020708) Human Tagged ORF Clone
Tag:	Myc-DDK
Symbol:	KCC2
Synonyms:	DEE34; EIEE34; EIG14; hKCC2; KCC2
Mammalian Cell Selection:	Neomycin
Vector:	pCMV6-Entry (PS100001)
E. coli Selection:	Kanamycin (25 ug/mL)
ORF Nucleotide Sequence:	>RC223680 representing NM_020708 Red=Cloning site Blue=ORF Green=Tags(s)

TTTTGTAATACGACTCACTATAGGGCGGCCGGAATTCGTCGACTGGATCCGGTACCGAGGAGATCTGCC
GCC**CGATCGC**C

ATGCTAAACAACCTGACGGACTGCGAGGACGGCGATGGGGGAGCCAACCCGGGTGATGGCAACCCCAAGG
AAAGCAGTCCCTTCATCAACAGCACCGACACAGAGAAGGGAAAGGAGTATGATGGCAAGAACATGGCCTT
GTTTGAGGAGGAGATGGACACCAGCCCTATGGTGTCTCTTGTCTCAGTGGCCTGGCCAACACACCAAC
CTGCCCCAGGGAAGTAGGAGCATGAAGAGGCAGAAAACAATGAGGGTGGAAAAAGAAGCCGGTGCAGG
CCCCACGCATGGGCACCTTCATGGCGTGTACCTGCCGTGCTGCAGAACATCTTTGGCGTCATCCTCTT
CCTGCGGCTCACCTGGTGGTGGCATTGCAGGCATCATGGAGTCTTCTGCATGGTGTTCATCTGTCTG
TCTGTACGATGCTCACGGCCATCTCCATGAGTGAATTGCAACGAATGGTGTGTGCTGCTGGTGGCT
CCTACTACATGATTTCCAGGTCTCTGGGCCAGAGTTGGGGGTGCCGTGGGCTCTGCTTCTACCTGGG
CACTACCTTTGCAGGAGCCATGTACATCCTGGGCACCATCGAAATCCTGTGCTGGCTTACCTCTCCAGCC
ATGGCCATCTTCAAGGCAGAAGATGCCAGTGGGGAGGCAGCAGCCATGCTGAACAACATGCGTGTTCAG
GCACCTGTGTGCTCACCTGCATGGCCACTGTGGTGTGGTGGTGTCAAGTATGTCAACAAGTTTGCCT
TGTCTTCTGGGTTGTGTATCCTCTCCATCCTGGCCATCTATGCTGGGGTCAAGTATGCTGCTGCTG
CCACCCAACCTCCCGATCTGCCTCCTGGTAACCGCAGCTGTCTGCCATGGCTTTGATGTCTGTGCCA
AGCTGGCTTGGGAAGAAATGAGACGGTGACCACACGGCTATGGGCCTTTTCTGCTCCTCTCGCTTCT
CAACGCCACCTGTGATGAATACTTCACCCGAAACAATGTCACAGAGATCCAGGGCATCCCTGGTGTGCT
AGTGGCCTCATCAAAGAGAACCTCTGGAGCTCCTACCTGACCAAGGGCGTATTGTGGAGAGGAGTGGGA
TGACCTCGGTGGGCTGGCCGATGGCACTCCTATCGACATGGACCACCCTTATGTCTTCAAGTATGAC
CTCCTACTTCACCTGCTGGTTGGCATCTACTCCCTCAGTCACAGGGATCATGGCTGGTTCTAACCGC
TCTGGGACCTGAGGGATGCCAGAAGTCAATCCCACTGGCACCATCCTGGCCATCGCCACCACCTCTG
CTGTCTACATCAGCTCCGTTGTTCTGTTGGGGCTGCATTGAGGGGTGCTCCTGCGGGACAAGTTTGG
CGAAGCTGGAATGGCAACCTCGTGGTGGCACTCTGGCCTGGCCATCTCCATGGTAATTGTCATCGGA



[View online »](#)

TCCTTCTTCTCCACCTGTGGGGCTGGGCTGCAGAGCCTCACGGGGGCCCCACGCCTGCTGCAGGCCATCT
 CGAGGGATGGCATTGTGCCCTTCTGCAGGTCTTTGGCCATGGCAAGGCCAATGGAGAGCCGACCTGGG
 CCTGCTCTGACTGCCTGCATCTGCGAGATTGGCATCCTCATTGCATCCCTCGACGAGGTGGCCCCATC
 CTCTCTATGTTCTTCTGATGTGCTACATGTTTGTGAATCTGGCCTGTGCAGTGCAGACGCTGCTGAGGA
 CACCCAACTGGAGGCCACGCTTTCGATATTACCACTGGACCCTCTCCTTCTGGGCATGAGCCTCTGCCT
 GGCCCTCATGTTTCATCTGCTCCTGGTATTATGCACCTGGTAGCCATGCTCATTGCTGGACATCATCTACAAG
 TACATTAGTACCGTGGGCGAGAGAAGGAGTGGGCGATGGGATACGAGGTCTGTCTCTCAGTCCAGCTC
 GCTATGCCCTCTTACGCCTGGAGGAAGGGCCCCACACACCAAGAAGTGGAGGCCACAGCTGCTGGTGCT
 GGTGCGTGTGGACCAAGACCAGAATGTGGTGCACCCCCAGCTGCTCTCACTGACCTCCAGCTGAAGGCA
 GGAAGGGCTGACCATCGTGGGCTCTGTCTTGGAGGCACCTTCTGGAAAATCATCCACAGGCCCAGC
 GGGCAGAAGAGTCTATCAGGCGCTGATGGAGGCAGAGAAGTGAAGGGCTTCTGCCAGGTGGTATCTC
 CTCCAACTTGGTGTGCGTGTCCCATCTGATCCAGTCCGGGGGCTCGGGGGCTGCAGCACAACACT
 GTGCTTGTGGCTGGCCCCGCAACTGGCCGAGAAAGATCATCAGACATGGAGGAACCTCATTGAGC
 TGGTCCGGAAACCACAGCTGGCCACTTAGCCCTGCTGGTACCAAGAAGCTTCCATGTTTCTGGGAA
 CCCTGAGCGCTTCTCTGAGGGCAGCATCGACGTTTGGTGGATTGTGCACGATGGAGGCATGCTCATGCTG
 CTGCCCTTCTGCTGCGGCACCACAAGGTCTGGCGGAAGTGAAGATGCGTATCTTCACTGTGGCCAGA
 TGGATGACAATAGCATCCAGATGAAGAAGGATCTGACCACATTTCTGTATCATTTACGCATCACTGCGGA
 GGTGAGGTGGTGGAGATGCATGAGAGCGACATCTCAGCTTACACCTATGAGAAGACGTTGGTGTGGAG
 CAGCGTCCCAGATCCTCAAACAGATGCATTTAACCAAGAATGAGCGGGAGCGGGAGATCCAGAGTATCA
 CAGATGAGTCACGAGGCTCAATCCGGAGAAAGAATCCAGCCAACACGCGGCTCCGCTGAACGTCCCAGA
 AGAGACGGCTGGTACAGTGAAGAGAAGCCAGAGGAGGAGGTGCAGTGTCCACGATCAGAGTGTCCC
 AGCTGCCCCAGCAGCTCCCCGTCCCAGGGGAGGAGCCTGAGGGGAAGGGGAGACAGATCCGGAGAAGG
 TGCATCTACCTGGACCAAGGACAAGTGGTGGCAGAGAAGAATAAGGGCCCCAGTCTCTCTCTGA
 GGCATCAAGGACTTCTCAGCATGAAGCCGAGTGGGAGAACTTGAACCAAGTCCAACTGCGGCGCATG
 CACACGGCCGTGCGGCTGAACGAGGTATCGTGAAGAAATCCCGGACGCCAAGCTTGTCTTCTCAACA
 TGCTGGGCTCCCCGCAACCGCAATGGTGTGAAAACACATGGAGTTTCTCGAGGTCTCACAGAGCA
 CCTGGACCGGTGATGCTGGTCCGCGGCGGCGGCGGAGGTATCACCATCTACTCC

ACGCGTACGCGGCGCTCGAGCAGAACTCATCTCAGAAGAGGATCTGGCAGCAATGATATCTGGATT
 ACAAGGATGACGACGATAAGGTTTAA

Protein Sequence:

>RC223680 representing NM_020708
 Red=Cloning site Green=Tags(s)

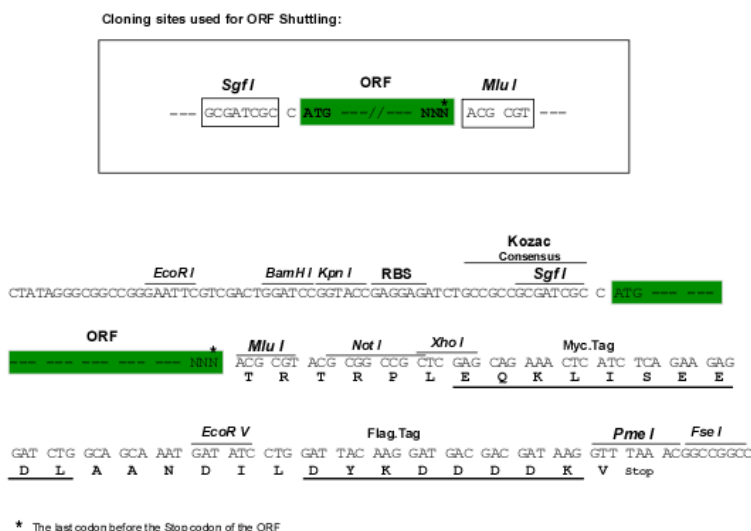
MLNNLTDCEGDGGANPGDGNPKESPFINSTDEKGEYDGNMALLEEEMDTPMVSLLSGLANYTN
 LPQGSREHEEAENNEGGKKKPVQAPRMGTFMGVYLPCLQNI FGVILFLRLTWVVG IAGIMESFCMVFI CC
 SCTMLTAISMSAIATNGVVPAGGSYYMISRSLGPEFGGAVGLCFYLGTTFAGAMYILGTIEILLAYL FPA
 MAIFKAEDASGEAAAMLNMRVYGT CVLTCMATVVFVGVKYNKFAVFLGCVILSILAIYAGVIKSAFD
 PPNFPICLLGNRTL SRHGF DVCAKLAWEGNETVTTRLWGLFCSSRFLNATCDEYFTRNNVTEIQGIPGAA
 SGLIKENLWSSYLTKGVIERSGMTSVGLADGTPIDMDHPYVFSDMTSYFTLLVGIYFSPVTGIMAGSNR
 SGDLRDAQSIPTGTILAIATTSAVYISSVVLFGACIEGVVLRDKFGEAVNGNLVVGTLAWPSPWVIVIG
 SFFSTCGAGLQSLTGAPRLLQAI SRDGI VPFLQVFGHGKANGEPTWALLLTACICEIGILIASLDEVAPI
 LSMFFLMCYMFVNLACAVQTLRLTPNWRPRFRYYHWTLSFLGMSLCLALMFICSWYYALVAMLIAGLIYK
 YIEYRGAKEKWDGIRGLSL SAARYALLRLEEGPPHTKNWRPQLLVLRVDQDQNVVHPQLLSLTSQ LKA
 GKGLTIVGSVLEGTFL ENHPQAQRAEESIRRLMEAEKVKGFCQVVISSNLRDGVSHLIQSGGLGGLQHNT
 VLVGWPRNWRQKEDHQTWRNFIELVRETTAGHLALLVTKNVSMFPGNPERFSEGSIDVWVIVHDGMLML
 LPFLLRHHKVWRKCKMRIFTVAQMDDNSIQMKKDLTTFLYHLRITAEVEVEMHESDISAYTYEKTLMVE
 QRSQILKQMH LTKNEREREIQSITDES RGSIRRNPNANTRLRLNVPEETAGDSEEKPEEEVQLIHDQSAP
 SCPSSSPSPGEEPEGEGETDPEKVHLTWTKDKSVAEKNKGPSPVSSSEGIKDFFSMKPEWENLNQSNVRRM
 HTAVRLNEIVKKS RDAKL VLLNMPGPPRNRNGDENYMEFLEVLTEHLDRVMLVRGGGREVITIIYS

TRTRPLEQKLISEEDLAANDILDYKDDDDKV

Chromatograms: https://cdn.origene.com/chromatograms/mk6169_c02.zip

Restriction Sites: SgfI-MluI

Cloning Scheme:



ACCN: NM_020708

ORF Size: 3348 bp

OTI Disclaimer: The molecular sequence of this clone aligns with the gene accession number as a point of reference only. However, individual transcript sequences of the same gene can differ through naturally occurring variations (e.g. polymorphisms), each with its own valid existence. This clone is substantially in agreement with the reference, but a complete review of all prevailing variants is recommended prior to use. [More info](#)

OTI Annotation: This clone was engineered to express the complete ORF with an expression tag. Expression varies depending on the nature of the gene.

Components: The ORF clone is ion-exchange column purified and shipped in a 2D barcoded Matrix tube containing 10ug of transfection-ready, dried plasmid DNA (reconstitute with 100 ul of water).

Reconstitution Method:

1. Centrifuge at 5,000xg for 5min.
2. Carefully open the tube and add 100ul of sterile water to dissolve the DNA.
3. Close the tube and incubate for 10 minutes at room temperature.
4. Briefly vortex the tube and then do a quick spin (less than 5000xg) to concentrate the liquid at the bottom.
5. Store the suspended plasmid at -20°C. The DNA is stable for at least one year from date of shipping when stored at -20°C.

RefSeq: [NM_020708.5](#)

RefSeq Size: 6059 bp

RefSeq ORF: 3351 bp

Locus ID: 57468

UniProt ID: [Q9H2X9](#)

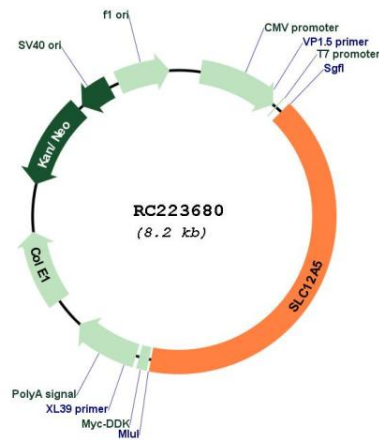
Cytogenetics: 20q13.12

Protein Families: Transmembrane

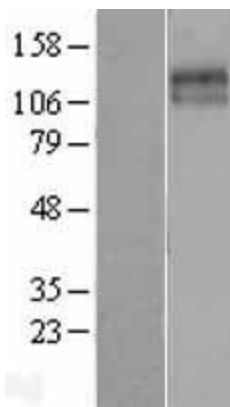
MW: 123.3 kDa

Gene Summary: K-Cl cotransporters are proteins that lower intracellular chloride concentrations below the electrochemical equilibrium potential. The protein encoded by this gene is an integral membrane K-Cl cotransporter that can function in either a net efflux or influx pathway, depending on the chemical concentration gradients of potassium and chloride. The encoded protein can act as a homomultimer, or as a heteromultimer with other K-Cl cotransporters, to maintain chloride homeostasis in neurons. Alternative splicing results in two transcript variants encoding different isoforms. [provided by RefSeq, Sep 2008]

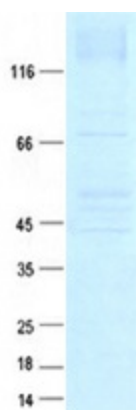
Product images:



Circular map for RC223680



Western blot validation of overexpression lysate (Cat# [LY402800]) using anti-DDK antibody (Cat# [TA50011-100]). Left: Cell lysates from untransfected HEK293T cells; Right: Cell lysates from HEK293T cells transfected with RC223680 using transfection reagent MegaTran 2.0 (Cat# [TT210002]).



Coomassie blue staining of purified SLC12A5 protein (Cat# [TP323680]). The protein was produced from HEK293T cells transfected with SLC12A5 cDNA clone (Cat# RC223680) using MegaTran 2.0 (Cat# [TT210002]).