

## Product datasheet for **RC223677**

### EMR2 (ADGRE2) (NM\_152918) Human Tagged ORF Clone

#### Product data:

Product Type:	Expression Plasmids
Product Name:	EMR2 (ADGRE2) (NM_152918) Human Tagged ORF Clone
Tag:	Myc-DDK
Symbol:	EMR2
Synonyms:	CD312; EMR2; VBU
Mammalian Cell Selection:	Neomycin
Vector:	pCMV6-Entry (PS100001)
E. coli Selection:	Kanamycin (25 ug/mL)



[View online »](#)

**ORF Nucleotide Sequence:**

>RC223677 representing NM\_152918  
 Red=Cloning site Blue=ORF Green=Tags(s)

TTTTGTAATACGACTCACTATAGGGCGGCCGGAATTCGTCGACTGGATCCGGTACCGAGGAGATCTGCC  
 GCC**CGGATCGCC**

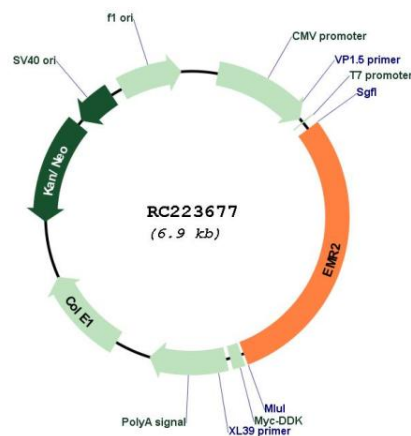
ATGGGAGGCCGCTCTTTCTCGTCTTTCTCGATTCTGTGTCTGGCTGACTCTGCCGGGAGCTGAAACCC  
 AGGACTCCAGGGGCTGTGCCGGTGGTGCCTCAGGACTCCTCGTGTGCAATGCCACCGCTGTGCTG  
 CAATCCAGGGTTCAGCTCTTTTTCTGAGATCATACCACCCCATGGAGACTTGTGACGACATCAACGAG  
 TGTGCAACACTGTGAAAGTGTATGCGGAAAATTCTCGGACTGCTGGAACACAGAGGGGAGCTACGACT  
 GCGTGTGACAGCCAGGATATGAGCCTGTTTCTGGGGCAAAAACATTCAAGAATGAGAGCGAGAACACGTG  
 TCAAGATATGACTTTCTCCACCTGGACCCGCCCTGGAGTCCACAGCCAGACGCTTTCCCGATTCTTC  
 GACAAAGTCCAGGACCTGGCAGAGACTACAAGCCAGGCTTGCCAATAACACCATCCAGAGCATTTAC  
 AGGCGCTGGATGAGCTGCTGGAGGCCCTGGGGACCTGGAGACCTGCCCGCTTACAGCAGCACTGTGT  
 GGCCAGTCACCTGCTGGATGGCCTAGAGGATGTCTCAGAGGCCCTGAGCAAGAACCTTTCCAATGGGCTG  
 TTGAATTCAGTTATCCTGCAGGCACAGAATTGTCCCTGGAGGTGCAAGAAGTAGACAGGAGTGTCA  
 CCTTGAGACAGAATCAGGCAGTGTGACGCTCGACTGGAATCAGGCACAGAAATCTGGTGACCCAGGCC  
 TTCTGTGGTGGGCCTTGCTCCATTCCAGGGATGGGCAAGTTGCTGGCTGAGGCCCTCTGGTCTGGAA  
 CCTGAGAAGCAGATGCTTCTGCATGAGACACACCAGGGCTTGTGTCAGGACGGCTCCCCATCCTGCTCT  
 CAGATGTGATCTCTGCCTTTCTGAGCAACAACGACACCCAAAACCTCAGTCCCCAGTTACCTTCACCTT  
 CTCCCACCGTTTCAGTGATCCCGAGACAGAAGGTGCTCTGTGTCTTCTGGGAGCATGGCCAGAATGGATGT  
 GGTCACTGGGCCACCACAGGCTGCAGCACAATAGGCACCAGAGACACCAGCACCATCTGCCGTTGCCACC  
 ACCTGAGCAGCTTTGCCGCTCCTCATGGCCACTACGATGTGACAGGAGGAGGATCCCGTGTGATGTCAT  
 CACCTACATGGGGCTGAGCGTCTCTGTGTGTCCTCCTCCTGGCGGCCCTCACTTTTCTCCTGTGTA  
 AACGCCATCCAGAACCAGCACCTCACTGCATCTGCAGCTCTCGCTCTGCCTCTTCTGCCCCACCTCCTCT  
 TCCTCGTGGCAATTGATCAAACCGGACACAAGGTGCTGTGCTCCATCATCGCCGGTACCTTGCACTATCT  
 CTACCTGGCCACCTTGACCTGGATGCTGCTGGAGGCCCTGTACCTCTTCTCACTGCACGGAACCTGACG  
 GTGGTCAACTACTCAAGCATCAACAGATTATGAAGAAGCTCATGTTCCCTGTGGGCTACGGAGTCCCAG  
 CTGTGACAGTGGCATTCTGCAGCCTCCAGGCCCTCACCTTTATGGAACACCTTCCCGTGTGCTGCTCA  
 ACCAGAAAAGGGATTTATATGGGGCTTCTTGGACCTGTCTGCGCCATCTTCTGTGAATTTAGTTCTC  
 TTTCTGGTGACTCTCTGGATTTTAAAAACAGACTCTCCTCCCTCAATAGTGAAGTGTCCACCCTCCGGA  
 ACACAAGGATGCTGGCATTAAAGCGACAGCTCAGCTGTTTCATCCTGGGCTGCACGTGGTGTCTGGGAT  
 CTTGACAGTGGGTCCGGCTGCCGGGTCATGGCCTACCTTTACCATCATCAACAGCCTGCAGGGTGTG  
 TTCATCTTCTGGTGTACTGCCTCCTCAGCCAGCAGGTCCGGGAGCAATATGGGAAATGGTCCAAAGGGA  
 TCAGGAAATTGAAAACCTGAGTCTGAGATGCACACACTCTCCAGCAGTGTAAAGGCTGACACCTCCAAACC  
 CAGCACGGTTAAC

**ACGCGT**ACGCGGCCGCTCGAGCAGAACTCATCTCAGAAGAGGATCTGGCAGCAATGATATCCTGGATT  
 ACAAGGATGACGACGATAAGGTTTAA

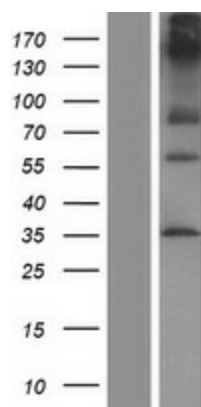


<b>Components:</b>	The ORF clone is ion-exchange column purified and shipped in a 2D barcoded Matrix tube containing 10ug of transfection-ready, dried plasmid DNA (reconstitute with 100 ul of water).
<b>Reconstitution Method:</b>	<ol style="list-style-type: none"><li>1. Centrifuge at 5,000xg for 5min.</li><li>2. Carefully open the tube and add 100ul of sterile water to dissolve the DNA.</li><li>3. Close the tube and incubate for 10 minutes at room temperature.</li><li>4. Briefly vortex the tube and then do a quick spin (less than 5000xg) to concentrate the liquid at the bottom.</li><li>5. Store the suspended plasmid at -20°C. The DNA is stable for at least one year from date of shipping when stored at -20°C.</li></ol>
<b>RefSeq:</b>	<a href="#">NM_152918.1</a> , <a href="#">NP_690882.1</a>
<b>RefSeq Size:</b>	6345 bp
<b>RefSeq ORF:</b>	2045 bp
<b>Locus ID:</b>	30817
<b>Cytogenetics:</b>	19p13.12
<b>Protein Families:</b>	Druggable Genome, GPCR, Transmembrane
<b>MW:</b>	74.8 kDa
<b>Gene Summary:</b>	This gene encodes a member of the class B seven-span transmembrane (TM7) subfamily of G-protein coupled receptors. These proteins are characterized by an extended extracellular region with a variable number of N-terminal epidermal growth factor-like domains coupled to a TM7 domain via a mucin-like spacer domain. The encoded protein is expressed mainly in myeloid cells where it promotes cell-cell adhesion through interaction with chondroitin sulfate chains. This gene is situated in a cluster of related genes on chromosome 19. Alternatively spliced transcript variants encoding multiple isoforms have been observed for this gene. [provided by RefSeq, Aug 2012]

## Product images:



Circular map for RC223677



Western blot validation of overexpression lysate (Cat# [LY407215]) using anti-DDK antibody (Cat# [TA50011-100]). Left: Cell lysates from untransfected HEK293T cells; Right: Cell lysates from HEK293T cells transfected with RC223677 using transfection reagent MegaTran 2.0 (Cat# [TT210002]).